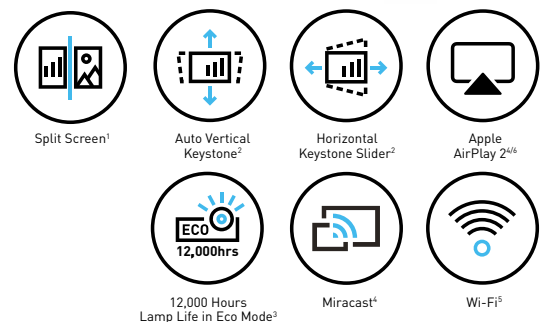


SMART DISPLAY SOLUTIONS FOR EVERY NEED.



Enjoy crisp visuals and easy setup with Epson projectors, designed for modern workspaces and classrooms.

Take control of your presentations with Epson's reliable, high-performance business projectors. Whether you're leading a boardroom meeting or teaching in a busy classroom, these projectors deliver crystal-clear visuals that make your content shine. Say goodbye to complicated setups – our wireless projection feature lets you connect directly from compatible smart devices with ease, no extra software needed. Flexible, user-friendly and built to impress, Epson projector is your smart choice for impactful presentations every time.



ENGINEERED FOR good



Sharper, Brighter Visuals

Epson's 3LCD technology delivers sharp visuals with up to 4,100 lumens², ensuring vibrant images even in bright environments.

Designed for Usability

With their compact design and portability, these projectors offer multiple connectivity options, ensuring instant setup and seamless performance.

Durable Performance

Enjoy reliable performance with various user-friendly options and an extended lamp life, ensuring consistent results over time.

¹Except for EB-FH54. ²For selected models only. ³Lamp life for EB-W56S is 17,000 hours. ⁴Only for EB-FH54. ⁵Optional for some models. Not applicable for EB-E24, EB-W53 and EB-E12.

⁶AirPlay 2 is a wireless media streaming protocol developed by Apple.



Outstanding Image Quality

Epson's 3LCD technology delivers exceptional color brightness, ensuring vibrant, clear visuals even in well-lit conference rooms, classrooms, or retail spaces. With up to 4,100 lumens*, these projectors provide superior clarity and impact, making them the perfect choice for professional presentations in bright environments.

*For EB-FH54.

Higher Colour Light Output

Epson's 3LCD technology delivers bright images with vivid colours, offering balanced white and colour light output, along with superior colour brightness for more vibrant images than 1-chip projectors.



1-chip Technology



Scene Adaptive Gamma Except for EB-E24

Automatically adjusts the gamma level based on the content being displayed, optimising contrast and image quality for each scene. It analyses the image frame by frame, dynamically adjusting the gamma to ensure a more vivid and natural-looking picture, even in both dark and bright scenes.



The Importance of Higher Resolution

High-resolution projectors capture every detail from PCs and other devices, ensuring seamless communication. As screen size increases, so does the need for higher resolution to maintain clear, sharp images. For example, SVGA resolution often falls short in providing the clarity required for smooth communication.

Epson's latest business projector lineup offers models in XGA, WXGA, and 1080p resolutions. The 1080p model, in particular, delivers crisp, sharp text and more detailed images, making it ideal for professional presentations.

Higher Resolution = Clearer Images and Sharper Text

Higher Resolution = Display More Detail and Information



Bigger Screens for Better Impact

Epson business projectors deliver larger images, with screen sizes up to 300 inches*, offering better visibility and brighter images that remain clearly visible even from the back of the room. This ensures a stress-free viewing experience for everyone.

* Maximum screen size varies depending on model.



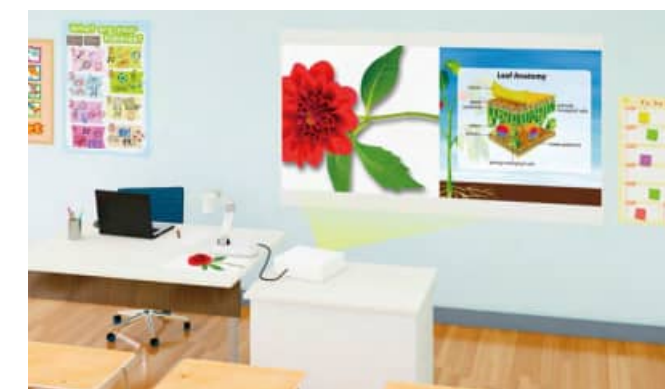
Split Screen Function for Corporate Except for EB-FH54

The split screen function allows two image sources to be projected on a single screen, eliminating the need for a second projector. This feature is ideal for video conferencing, enabling efficient multitasking during meetings.



Split Screen Function for Education Except for EB-FH54

In classrooms, the split screen function projects two images from separate devices, both wired and wirelessly. Connecting a projector to a document camera and a PC or tablet makes lessons more interactive and engaging.





Portability Meets Versatility

Easy To Carry

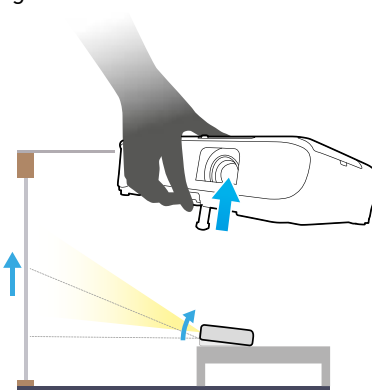
The Epson business projectors feature a compact design, making them easy to carry from one room to another, especially when compared to conventional flat panel displays (FPD).



Note: The projector carrying case is sold separately as an optional accessory.

Quick and Easy Positioning

Allows for easy adjustment and a wide range of projection positions using the foot lever.



Optical Zoom Except for EB-E12, E24, W53 & W56S

Optical zoom provides the flexibility to adjust the projector's installation location while still maintaining the desired picture size and quality.



Auto Vertical Keystone Except for EB-E12, E24 & W53

Saving setup time, Auto Vertical Keystone automatically detects and corrects image distortion when the foot lever is used to adjust the height of a projected image.



Auto Source Search

Automatically detects the input signal and projects the image without the need for a remote control or manual button operation.

Horizontal Keystone Slider Except for EB-E12, W53 & W56S

With the easy-to-use sliding Horizontal Keystone Slider, screen corrections can be done quickly, easily, and accurately, even in a limited space.



Plug-in and Present

Screen Mirroring with Miracast® Only for EB-FH54

Miracast support makes it easy to connect smart devices or laptops to the projector wirelessly– no additional accessories or app installations required. This quick and seamless connection enables smarter presentations and eliminates the hassle of messy cables.

Dual Connection

Easily connect to two devices simultaneously using Miracast. This feature improves flexibility and saves time during meetings or lessons.

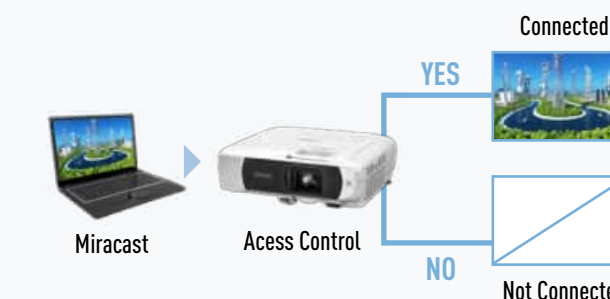
- Seamlessly switch between two connected devices without disconnecting each time
- Supports split screen with two Miracast sources for enhanced productivity



Enhanced Secure Connection

Keep your wireless connections secure and under control with added Miracast safety features.

- Prevents unintended or unauthorised Miracast connections
- "Access Control" lets the moderator approve connection requests
- Specific devices can be added to a blocklist to deny future connection attempts



Up to Four Screens at once with iProjection

Except for EB-E12, E24 & W53

Use the Epson iProjection* app to wirelessly share and control content from up to four connected devices simultaneously. The app also allows you to transfer still images and files from your smart device for smooth, wireless projection.

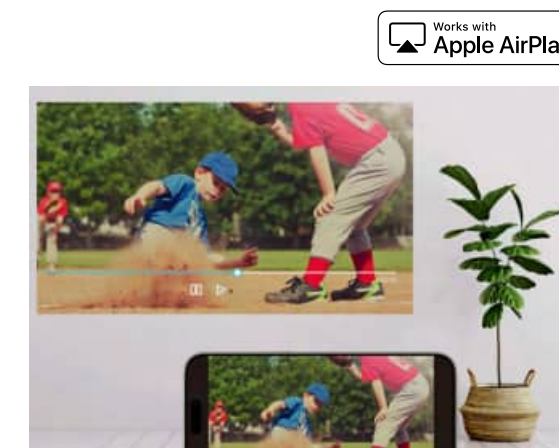


* Epson iProjection eliminates the need for annoying cabling by transferring still images and supported files from smart devices to projectors, for smooth wireless projection.

Seamless Streaming Made Easy with AirPlay 2

Only for EB-FH54

This projector features built-in Apple AirPlay 2, making it easy to stream videos, music, photos, and more directly from your iPhone, iPad, or Mac, with synchronized playback across other AirPlay-enabled devices.



Disclaimer: AirPlay 2 is a wireless media streaming protocol developed by Apple.



Smart Features For Smooth Operation

Lens Shutter

Except for EB-E12, W53 & W56S

The lens shutter can be used to quickly stop and start projection without actually turning power off and on. This feature temporarily blocks an image projected onto a whiteboard, allowing the whiteboard to be used.



Home Screen

The home screen offers quick access to frequently used functions. Connected interfaces can be recognised at a glance and switched instantaneously. The information needed when setting up a wireless connection is projected on-screen, making connection fast and easy.



Auto Power On

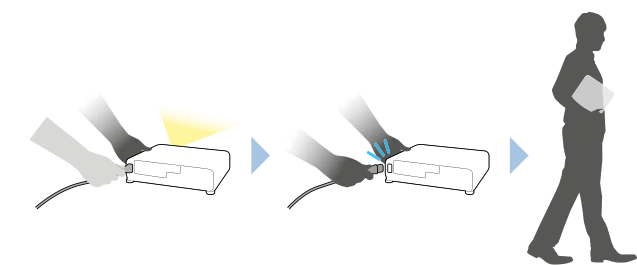
Supported interface varies per model

This feature can be used to automatically power up a projector when the projector is connected by cable to a device such as PC, saving setup time.



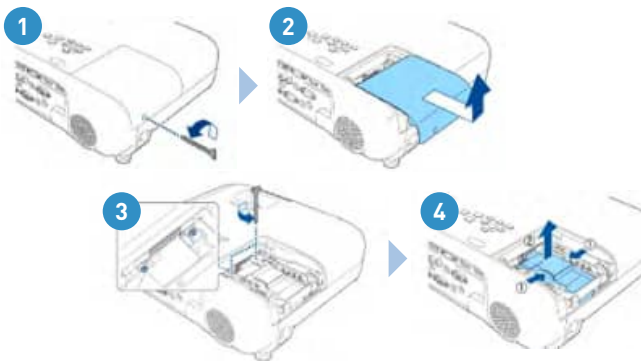
Direct Power Off

Simply unplug the power cable to turn off the projector after use and speed up clean-up after meetings and lessons.



Easy Lamp Replacement

When it's time to replace the lamp, simply purchase and install it yourself. No additional service required. This saves time and keeps maintenance hassle free.



Built-in Speaker

A powerful speaker delivers clear sound even in large rooms, eliminating the need to set up additional speakers.



Reliable and Low Maintenance

Easy Maintenance and Longer Lamp Life

A long lamp life reduces maintenance and costs. The lamp lasts up to 12,000 hours in ECO mode, equivalent to 10 years of use. This reduces the frequency of lamp replacements, saving you time and money while lowering the total cost of ownership.

Note: EB-W56S can last up to 17,000 hours in ECO mode.



WPA2 / WPA3-Enterprise

For EB-FH54

WPA2/WPA3-Enterprise provides a safe method of wireless connectivity so that projectors can connect to a business environment over a secure wireless network.



MODEL COMPATIBILITY OVERVIEW							
	EB-E12	EB-E24	EB-X52	EB-W53	EB-W55	EB-FH54	EB-W56S
White/Colour Light Output	3,600lm	3,600lm	3,800lm	4,000lm	4,000lm	4,100lm	3,700lm
Colour Light Output	•	•	•	•	•	•	•
Resolution	XGA	XGA	XGA	WXGA	WXGA	1080p	WXGA
Scene Adaptive Gamma	•		•	•	•	•	•
Bigger and Brighter Images	•	•	•	•	•	•	•
Up to Four Screens at Once with iProjection			•		•	•	•
Split Screen Function	•	•	•	•	•		•
Split Screen Function for Wired/Non-Wired Devices			•		•		•
Optical Zoom			1 – 1.2		1 – 1.2	1 – 1.62	
Auto Vertical Keystone			•		•	•	•
Horizontal Keystone Slider		•	•		•	•	
Screen Mirroring with Miracast®						•	
AirPlay 2						•	
Wi-Fi 6						•	
USB-A 5V2A Power Supply			•		•	•	
Lamp Life	12,000 hrs/Eco	12,000 hrs/Eco	12,000 hrs/Eco	12,000 hrs/Eco	12,000 hrs/Eco	12,000 hrs/Eco	17,000 hrs/Eco
WPA2/WPA3-Enterprise						•	
Lens Shutter		•	•		•	•	
Home Screen	•	•	•	•	•	•	•
Auto Power On	•	•	•	•	•	•	•
Direct Power On	•	•	•	•	•	•	•
Built-in Speaker	2W	5W	2W	2W	2W	16W	16W

SPECIFICATIONS

MODEL NUMBER		EB-E12	EB-E24
SKU Code		V11HB55052	V11HB51052
Projection Technology		RGB liquid crystal shutter projection system (3LCD)	
Specifications of Main Parts			
LCD	Size	0.55" (C2 Fine)	
	Driving Method	Poly-silicon TFT active matrix	
	Pixel Number	786,432 dots (1024 x 768) x 3	
	Native Resolution	XGA	
	Aspect Ratio	4:3	
	Pixel Arrangement	Cross stripe	
Projection Lens	Type	No Optical Zoom / Focus (Manual)	
	F-Number	1.44	
	Focal Length	16.7 mm	
	Zoom Ratio	1.0 - 2.0 (Digital Zoom)	
	Throw Ratio	1.44 – 2.88	
Lightsource	Lamp Type	210 W UHE	
	Life (Normal / Eco)	6,000 hours / 12,000 hours	
Screen Size (Projected Distance)			
Zoom: Wide		30" – 350" [0.87 – 10.34 m]	
Zoom: Tele		15" – 175" [0.87 - 10.34 m]	
Standard Screen Size		60" [1.76 m]	
Brightness ^{*1}			
White Light Output (Normal / Eco)		3,600 lm / 2,200 lm	3,600 lm / 2,100 lm
Colour Light Output		3,600 lm	
Light Output (Center) ^{*2}		3,700 lm	
Contrast Ratio			
15,000:1			
Geometric Correction			
Vertical / Horizontal Keystone		±30° / ±30°	
Connectivity			
Analog Input	D-Sub 15pin	N/A	2 (RGB, RGB Video)
	RCA	N/A	1
Digital Input	HDMI Type A	2 (HDCP 1.4)	1 (HDCP 1.4)
Analog Output	D-Sub 15pin	N/A	1 (RGB, RGB Video)
USB Input	USB Type B	1 (For Firmware Update, Copy OSD Settings)	
Control I/O	RS-232C	N/A	1 (D-Sub 9pin)
Audio Input	Stereo Mini	N/A	2
Audio Output	Stereo Mini	N/A	1
	2RCA	N/A	1
	(White x1, Red x1)		
Internal Speaker		Monaural 2W x 1	Monaural 5W x 1
Operating Temperature			
Low Altitude (0 - 2,286m/7,500ft): 5 - 40 °C <41 - 104 °F> High Altitude (Over 2,286m/7,500ft): 5 - 35 °C <41 - 95°F> 20% - 80% Humidity, No Condensation			
Operating Altitude			
Over 1,500m/4,921ft with High Altitude Mode: 0 - 3,048m (0 -10,000ft)			
Direct Power On / Off			
Yes			
Start-Up Period			
Less than 7 seconds (Epson Logo); Warm-up Period: 30 seconds			
Cool Down Period			
Instant Off			
Air Filter		Electrostatic Filter	
Maintenance Cycle ^{*3}		6,000 hours (Normal) / 12,000 hours (Eco)	
Power Supply Voltage			
100 - 240 V AC ±10%, 50/60 Hz			
Power Consumption (220 - 240V)			
Lamp On	Normal	332 W	
	Extended	231 W	
Standby (Normal / Eco)		N/A / 0.3 W	
Dimension Excluding Feet (W x D x H)		302 x 234 x 77 mm	
Weight		Approx. 2.4kg	302 x 249 x 87 mm Approx. 2.7kg
Fan Noise (Normal / Eco)			
37dB / 28dB			

^{*1} Colour brightness (colour light output) and white brightness (white light output) will vary depending on usage conditions. Colour light output measured in accordance with IDMS 15:4; white light output measured in accordance with ISO 21118.
^{*2} This light output value is measured at the centre of the screen as a reference value. There is no official standard for light output (Centre) measurements and this measurement is made based on the method set by Epson.
^{*3} When used in the general office environment (the amount of floating dust: 0.04 - 0.2 mg/m3). Based on the Epson's in-house test results.

Supplied Accessories
Power Cable: 1.8m, 3 wire
Remote Control: Yes, with Alkaline AA Battery
User Guide

Optional Accessories
Spare Lamp: ELPLP97
Air Filter: ELPAF32
Soft Carrying Case: ELPKS69
Ceiling Mount: ELPMB23
Document Camera: ELPDC13, ELPDC21, ELPDC30
Streaming Media Player: ELPAP12



©2025 Epson Singapore Pte Ltd. All Rights Reserved. Reproduction in part or in whole, without the written permission from Epson, is strictly prohibited.
EPSON is a registered trademark of Seiko Epson Corporation.
All other product and company names used herein are for identification purposes only and are the trademarks or registered trademarks of their respective owners.
Epson disclaims any and all rights in those marks. Projected images shown herein are simulations. The actual product design and contents may vary. Specifications are subject to change without notice and may vary between countries. Please check with local Epson offices for more information.
Apple, iPad and iPhone are trademarks of Apple Inc., registered in the U.S. and other countries. App Store is a service mark of Apple Inc.
Android is a trademark of Google Inc.

Dealer's Stamp

Information correct at time of printing.
Printed June 2025

SPECIFICATIONS

MODEL NUMBER		EB-X52
SKU Code		V11HB56052
Projection Technology		RGB liquid crystal shutter projection system (3LCD)
Specifications of Main Parts		
LCD	Size	0.55" (C2 Fine)
	Driving Method	Poly-silicon TFT active matrix
	Pixel Number	786,432 dots (1024 x 768) x 3
	Native Resolution	XGA
	Aspect Ratio	4:3
	Pixel Arrangement	Cross stripe
Projection Lens	Type	Optical Zoom (Manual) / Focus (Manual)
	F-Number	1.49 – 1.72
	Focal Length	16.9 – 20.28 mm
	Zoom Ratio	1.0 - 1.2
	Throw Ratio	1.48 – 1.77
Lightsource	Lamp Type	210 W UHE
	Life (Normal / Eco)	6,000 hours / 12,000 hours
Screen Size (Projected Distance)		
Zoom: Wide		30" – 300" [0.89 – 9.12 m]
Zoom: Tele		30" – 300" [1.07 - 10.95 m]
Standard Screen Size		60" [1.8 - 2.17 m]
Brightness ^{*1}		
White Light Output (Normal / Eco)		3,800 lm / 2,500 lm
Colour Light Output		3,800 lm
Light Output (Center) ^{*2}		4,000 lm
		16,000:1
Contrast Ratio		
Geometric Correction		
Vertical / Horizontal Keystone		±30° / ±30°
Auto Keystone		Yes (V only)
Connectivity		
Digital Input	HDMI	2 (HDCP 1.4)
USB Input	USB Type A	1 (For Wireless LAN, Firmware Update, Copy OSD Settings)
	USB Type B	1 (For Firmware Update, Copy OSD Settings)
Wireless LAN		Optional
Internal Speaker		
		Monaural 2W x 1
Wireless Specification (Optional Wireless LAN)		
Supported Speed		IEEE 802.11a/b/g/n
Supported Mode		Infrastructure, Simple AP (Wi-Fi Direct)
Security Type		Infrastructure: Open, WPA2 / WPA3-PSK Simple AP (Wi-Fi Direct): OPEN, WPA2-PSK (AES)
Operating Temperature		
		Low Altitude (0 - 2,286m/7,500ft): 5 - 40 °C <41 - 104 °F> High Altitude (Over 2,286m/7,500ft): 5 - 35 °C <41 - 95°F> 20% - 80% Humidity, No Condensation Over 1,500m/4,921ft with High Altitude Mode: 0 - 3,048m (0 -10,000ft)
Operating Altitude		
Direct Power On / Off		
		Yes
Start-Up Period		
		Less than 7 seconds (Epson Logo); Warm-up Period: 30 seconds
Cool Down Period		
		Instant Off
Air Filter	Type	Electrostatic Filter
	Maintenance Cycle ^{*3}	6,000 hours (Normal) / 12,000 hours (Eco)
Power Supply Voltage		
		100 - 240 V AC ±10%, 50/60 Hz
Power Consumption (220 - 240V)		
Lamp On	Normal	332 W
	Extended	231 W
Standby (Normal / Eco)		2.0 / 0.3 W
Dimension Excluding Feet (W x D x H)		
		302 x 234 x 77 mm
Weight		
		Approx. 2.5kg
Fan Noise (Normal / Eco)		
		37dB / 28dB

^{*1} Colour brightness (colour light output) and white brightness (white light output) will vary depending on usage conditions. Colour light output measured in accordance with IDMS 15:4; white light output measured in accordance with ISO 21118.
^{*2} This light output value is measured at the centre of the screen as a reference value. There is no official standard for light output (Centre) measurements and this measurement is made based on the method set by Epson.
^{*3} When used in the general office environment (the amount of floating dust: 0.04 - 0.2 mg/m3). Based on the Epson's in-house test results.

Supplied Accessories
Power Cable: 1.8m, 3 wire
HDMI Cable: 1.8m
Remote Control: Yes, with Alkaline AA Battery
User Guide

Optional Accessories
Spare Lamp: ELPLP97
Air Filter: ELPAF32
Soft Carrying Case: ELPKS69
Ceiling Mount: ELPMB23
Wireless LAN Unit: ELPAP11
USB Document Camera: ELPDC07
Document Camera: ELPDC13, ELPDC21, ELPDC30
Streaming Media Player: ELPAP12



©2025 Epson Singapore Pte Ltd. All Rights Reserved. Reproduction in part or in whole, without the written permission from Epson, is strictly prohibited.
EPSON is a registered trademark of Seiko Epson Corporation.
All other product and company names used herein are for identification purposes only and are the trademarks or registered trademarks of their respective owners.
Epson disclaims any and all rights in those marks. Projected images shown herein are simulations. The actual product design and contents may vary. Specifications are subject to change without notice and may vary between countries. Please check with local Epson offices for more information.
Apple, iPad and iPhone are trademarks of Apple Inc., registered in the U.S. and other countries. App Store is a service mark of Apple Inc.
Android is a trademark of Google Inc.

Dealer's Stamp

Information correct at time of printing.
Printed June 2025

SPECIFICATIONS

MODEL NUMBER		EB-W53		EB-W55	
SKU Code		V11HB57052		V11HB58052	
Projection Technology		RGB liquid crystal shutter projection system (3LCD)			
Specifications of Main Parts					
LCD	Size	0.59" (C2 Fine)			
	Driving Method	Poly-silicon TFT active matrix			
	Pixel Number	1,024,000 dots (1280 x 800) x 3			
	Native Resolution	WXGA			
	Aspect Ratio	16:10			
	Pixel Arrangement	Cross stripe			
Projection Lens	Type	No Optical Zoom / Focus (Manual)		Optical Zoom (Manual) / Focus (Manual)	
	F-Number	1.44		1.49 – 1.72	
	Focal Length	16.7 mm		16.9 – 20.28 mm	
	Zoom Ratio	1.0 - 2.0 (Digital Zoom)		1.0 - 1.2	
	Throw Ratio	1.27 – 2.54		1.30 – 1.56	
Lightsource	Lamp Type	210 W UHE			
	Life (Normal / Eco)	6,000 hours / 12,000 hours			
Screen Size (Projected Distance)					
Zoom: Wide		33" – 375" [0.89 – 10.34 m]		33" – 320" [0.91 – 9.07 m]	
Zoom: Tele		16" – 188" [0.89 - 10.34 m]		33" – 320" [1.10 - 10.89 m]	
Standard Screen Size		60" [1.64 m]		60" [1.68 - 2.02 m]	
Brightness ^{*1}					
White Light Output (Normal / Eco)		4,000 lm / 2,600 lm			
Colour Light Output		4,000 lm			
Light Output (Center) ^{*2}		4,100 lm			
Contrast Ratio					
		16,000:1			
Geometric Correction					
Vertical / Horizontal Keystone		±30° / ±30°			
Auto Keystone Correction		NA		Yes (V only)	
Connectivity					
Digital Input	HDMI	2 (HDCP 1.4)			
USB Input	USB Type A	N/A		1 (For Firmware Update, Copy OSD Settings)	
	USB Type B	1 (For Firmware Update, Copy OSD Settings)			
Network	Wireless LAN	N/A		Built-in	
		Monaural 2W x 1			
Wireless Specification (Built-in Wireless LAN)					
Supported Speed		N/A		IEEE 802.11a/b/g/n	
Supported Interface		N/A		Infrastructure, Simple AP (Wi-Fi Direct)	
Security Type		N/A		Infrastructure: Open, WPA2 / WPA3-PSK Simple AP (Wi-Fi Direct): OPEN, WPA2-PSK (AES)	
Operating Temperature					
		Low Altitude (0 - 2,286m/7,500ft): 5 - 40 °C <41 - 104 °F> High Altitude (Over 2,286m/7,500ft): 5 - 35 °C <41 - 95°F> 20% - 80% Humidity, No Condensation			
		Over 1,500m/4,921ft with High Altitude Mode: 0 - 3,048m (0 -10,000ft)			
Operating Altitude					
		Yes			
Direct Power On / Off					
		Less than 7 seconds (Epson Logo); Warm-up Period: 30 seconds			
Start-Up Period					
		Instant Off			
Cool Down Period					
		Electrostatic Filter			
Air Filter					
Type					
Maintenance Cycle ^{*3}		6,000 hours (Normal) / 12,000 hours (Eco)			
Power Supply Voltage					
		100 - 240 V AC ±10%, 50/60 Hz			
Power Consumption (220 - 240V)					
Lamp On	Normal	332 W			
	Extended	231 W			
Standby (Normal / Eco)		N/A / 0.3 W		2.0 / 0.3 W	
Dimension Excluding Feet (W x D x H)					
		302 x 234 x 77 mm		302 x 234 x 87 mm	
Weight					
		Approx. 2.5kg		Approx. 2.6kg	
Fan Noise (Normal / Eco)					
		37dB / 28dB			

^{*1} Colour brightness (colour light output) and white brightness (white light output) will vary depending on usage conditions. Colour light output measured in accordance with IDMS 15:4; white light output measured in accordance with ISO 21118.

^{*2} This light output value is measured at the centre of the screen as a reference value. There is no official standard for light output (Centre) measurements and this measurement is made based on the method set by Epson.

^{*3} When used in the general office environment (the amount of floating dust: 0.04 - 0.2 mg/m3). Based on the Epson's in-house test results.

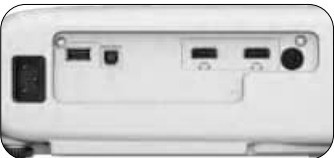
Supplied Accessories
Power Cable: 1.8m, 3 wire
HDMI Cable: 1.8m
Remote Control: Yes, with Alkaline AA Battery
User Guide

Optional Accessories
Spare Lamp: ELPLP97
Air Filter: ELPAF32
Soft Carrying Case: ELPKS69
Ceiling Mount: ELPMB23
USB Document Camera (EB-W55): ELPDC07
Document Camera: ELPDC13, ELPDC21, ELPDC30
Streaming Media Player: ELPAP12

EB-W53



EB-W55



©2025 Epson Singapore Pte Ltd. All Rights Reserved. Reproduction in part or in whole, without the written permission from Epson, is strictly prohibited.

EPSON is a registered trademark of Seiko Epson Corporation.

All other product and company names used herein are for identification purposes only and are the trademarks or registered trademarks of their respective owners.

Epson disclaims any and all rights in those marks. Projected images shown herein are simulations. The actual product design and contents may vary. Specifications are subject to change without notice and may vary between countries. Please check with local Epson offices for more information.

Apple, iPad and iPhone are trademarks of Apple Inc., registered in the U.S. and other countries. App Store is a service mark of Apple Inc.

Android is a trademark of Google Inc.

Dealer's Stamp

Information correct at time of printing.
Printed June 2025

SPECIFICATIONS

MODEL NUMBER		EB-FH54	
SKU Code		V11HB59052	
Projection Technology		RGB liquid crystal shutter projection system (3LCD)	
Specifications of Main Parts			
LCD	Size	0.62" (C2 Fine)	
	Driving Method	Poly-silicon TFT active matrix	
	Pixel Number	2,073,600 dots (1920 x 1080) x 3	
	Native Resolution	Full HD	
	Aspect Ratio	16:9	
Projection Lens	Pixel Arrangement	Cross stripe	
	Type	Optical Zoom (Manual) / Focus (Manual)	
	F-Number	1.51 – 1.77	
	Focal Length	18.2 – 29.1 mm	
	Zoom Ratio	1.0 - 1.62	
Lightsource	Throw Ratio	1.30 – 2.09	
	Lamp Type	230 W UHE	
	Life (Normal / Eco)	5,500 hours / 12,000 hours	
	Screen Size (Projected Distance)		
	Zoom: Wide	31" – 304" [0.88 – 8.88 m]	
Zoom: Tele	31" – 304" [1.43 - 14.29 m]		
Standard Screen Size	60" [1.73 - 2.80 m]		
Brightness ^{*1}			
White Light Output (Normal / Eco)	4,100 lm / 2,300 lm		
Colour Light Output	4,100 lm		
Light Output (Center) ^{*2}	4,400 lm		
Contrast Ratio			
	16,000:1		
Geometric Correction			
Vertical / Horizontal Keystone	±30° / ±30°		
Auto Keystone Correction	Yes (V only)		
Internal Speaker			
	Monaural 16W x 1		
Connectivity			
Digital Input	HDMI	2 (HDCP 1.4)	
Audio Output	Stereo Mini	1	
USB Input	USB Type A	1 (For Wireless LAN, Firmware Update, Copy OSD Settings)	
	USB Type B	1 (For Firmware Update, Copy OSD Settings)	
Network	Wireless LAN	Built-in	
Miracast			
Certification	Wi-Fi CERTIFIED Miracast R2		
Supported Codec	H.264 (AVC)		
AirPlay 2			
Supported Codec	H.264(AVC), H.265(HEVC), AV1, VP9, MPEG-2, MPEG-4		
Wireless Specification (Built-in Wireless LAN)			
Supported Speed	IEEE 802.11a/b/g/n/ac/ax		
Supported Interface	Infrastructure, Simple AP (Wi-Fi Direct)		
Security Type	Infrastructure: Open, WPA2 / WPA3-PSK, WPA2/WPA3-EAP		
	Supported EAP Type: PEAP, EAP-TLS		
	Simple AP (Wi-Fi Direct): WPA2-PSK (AES)		
Operating Temperature			
	Low Altitude (0 - 2,286m/7,500ft): 5 - 40 °C <41 - 104 °F>		
	High Altitude (Over 2,286m/7,500ft): 5 - 35 °C <41 - 95°F>		
	20% - 80% Humidity, No Condensation		
Operating Altitude			
Direct Power On / Off	Over 1,500m/4,921ft with High Altitude Mode: 0 - 3,048m (0 -10,000ft)		
	Yes		
Start-Up Period			
Cool Down Period	Less than 8 seconds (Epson Logo); Warm-up Period: 30 seconds		
	Instant Off		
Air Filter			
Type	Electrostatic Filter		
Maintenance Cycle ^{*3}	10,000 hours (Normal) / 20,000 hours (Eco)		
Power Supply Voltage			
	100 - 240 V AC ±10%, 50/60 Hz		
Power Consumption (220 - 240V)			
Lamp On	Normal	332 W	
	Extended	231 W	
Standby (Normal / Eco)	N/A / 0.3 W		
Dimension Excluding Feet (W x D x H)			
	309 x 282 x 90 mm		
Weight			
	Approx. 3.1kg		
Fan Noise (Normal / Eco)			
	37dB / 28dB		

SPECIFICATIONS

MODEL NUMBER		EB-W56S
SKU Code		V11HB62052
Projection Technology		RGB liquid crystal shutter projection system (3LCD)
Specifications of Main Parts		
LCD	Size	0.59" (G2 Fine)
	Driving Method	Poly-silicon TFT active matrix
	Pixel Number	1,024,000 dots (1280 x 800) x 3
	Native Resolution	WXGA
	Aspect Ratio	16:10
Projection Lens	Pixel Arrangement	Cross stripe
	Type	No Optical Zoom / Focus (Manual)
	F-Number	1.8
	Focal Length	7.8 mm
	Zoom Ratio	1.0 – 1.35 (Digital Zoom)
Lightsource	Throw Ratio	0.60 – 0.81
	Lamp Type	230 W UHE
	Life (Normal / Medium / Eco)	6,500 hours / 10,000 hours / 17,000 hours
Screen Size (Projected Distance)		
Zoom: Wide		50" – 300" [0.64 – 3.94 m]
Zoom: Tele		37" – 222" [0.64 - 3.94 m]
Standard Screen Size		75" [0.97 m]
Brightness^{*1}		
White Light Output (Normal / Eco)		3,700 lm / 2,000 lm
Colour Light Output		3,700 lm
Light Output (Center) ^{*2}		3,900 lm
Contrast Ratio		
Geometric Correction		
Vertical / Horizontal Keystone		±15° / ±15°
Auto Keystone Correction		Yes (V only)
Internal Speaker		
Connectivity		
Analog Input	D-Sub 15pin	2 (RGB, RGB Video)
	RCA	1
Digital Input	HDMI	2 (HDCP 1.4)
Analog Output	D-Sub 15pin	1 (RGB, RGB Video)
Audio Input	2RCA	1
	(White x1, Red x1)	
Audio Output	Stereo Mini	2
	Stereo Mini	1
Mic Input	Stereo Mini	1
Control	RS-232C	1
USB Input	USB Type A	1 (For Wireless LAN, Firmware Update, Copy OSD Settings)
	USB Type B	1 (For Firmware Update, Copy OSD Settings)
Network	Wired Lan	RJ45 x1
	Wireless LAN	Optional
Wireless Specification (Optional Wireless LAN)		
Supported Speed		IEEE 802.11a/b/g/n
Supported Mode		Infrastructure, Simple AP (Wi-Fi Direct)
Security Type		Infrastructure: Open, WPA2 / WPA3-PSK
		Simple AP (Wi-Fi Direct): OPEN, WPA2-PSK (AES)
Operating Temperature		
Operating Altitude		
Direct Power On / Off		Yes
Start-Up Period		Less than 7 seconds (Epson Logo); Warm-up Period: 30 seconds
Cool Down Period		Instant Off
Air Filter	Type	Electrostatic Filter
	Maintenance Cycle ^{*3}	10,000 hours (Normal) / 20,000 hours (Eco)
Power Supply Voltage		
Power Consumption (220 - 240V)		
Lamp On	Normal	332 W
	Extended	231 W
Standby (Normal / Eco)		2.0/ 0.3 W
Dimension Excluding Feet (W x D x H)		309 x 282 x 90 mm
Weight		Approx. 3.1kg
Fan Noise (Normal / Eco)		38dB / 28dB

Supplied Accessories

Power Cable: 1.8m, 3 wire
HDMI Cable: 1.8m
Remote Control: Yes, with Alkaline AA Battery
User Guide

Optional Accessories

Spare Lamp: ELPLP97
Air Filter: ELPAF54
Soft Carrying Case: ELPKS70
Ceiling Mount: ELPMB23
Wireless LAN Unit: ELPAP11
USB Document Camera: ELPDC07
Document Camera: ELPDC13, ELPDC21, ELPDC30

EB-W56S



©2025 Epson Singapore Pte Ltd. All Rights Reserved.
Reproduction in part or in whole, without the written permission from Epson, is strictly prohibited.
EPSON is a registered trademark of Seiko Epson Corporation.

All other product and company names used herein are for identification purposes only and are the trademarks or registered trademarks of their respective owners.

Epson disclaims any and all rights in those marks. Projected images shown herein are simulations. The actual product design and contents may vary. Specifications are subject to change without notice and may vary between countries. Please check with local Epson offices for more information.

Apple, iPad and iPhone are trademarks of Apple Inc., registered in the U.S. and other countries. App Store is a service mark of Apple Inc.

Android is a trademark of Google Inc.

Dealer's Stamp

Information correct at time of printing.
Printed June 2025

^{*1} Colour brightness (colour light output) and white brightness (white light output) will vary depending on usage conditions. Colour light output measured in accordance with IDMS 15:4; white light output measured in accordance with ISO 21118.
^{*2} This light output value is measured at the centre of the screen as a reference value. There is no official standard for light output (Centre) measurements and this measurement is made based on the method set by Epson.
^{*3} When used in the general office environment (the amount of floating dust: 0.04 - 0.2 mg/m3). Based on the Epson's in-house test results.