

SHARP

A Series

Professional Installation Projectors ideal
for corporate, higher education and
museum applications

A824U/A104U

The image shows a Sharp A Series projector in a lecture hall setting. The projector is projecting a timetable onto a large screen. Two men are standing on either side of the screen, and a group of students is seated in the foreground, looking at the projection. The projector is a large, black and white unit with a prominent lens and ventilation grilles.

▶ Timetable

	Monday	Tuesday	Wednesday	
	13:00 - 17:00	9:00 - 10:00	9:00 - 11:00	
	1177-A	1327-B	2377-C	
	Basic Calculus	Calculus +1	<div>+</div>	
			13:00 - 17:00	

4K UHD
READY

laser
light source

LCD laser installation projectors deliver extreme brightness and keeps audiences engaged in conference rooms, auditoriums and sanctuaries

Why It Works for You

- Multi-screen wow factor - Seamlessly support Picture-by-Picture or Picture-in-Picture, and use TileMatrix to power 4Kx2K resolution across four projectors - no extra hardware needed.
- Effortless scalability - Built-in daisy chain and edge-blending let you expand visuals and merge multiple images into one seamless experience.



Integrated for Smarter Performance

- 4K-Ready Brilliance - Experience stunning 4K 60P playback powered by Sharp's proprietary video processing chip. Enjoy HDR10 and BT.2020 content from Ultra HD Blu-ray and 4K broadcasts with every detail intact.
- Seamless Control - Preloaded with AMX Beacon, Crestron Roomview, Extron XTP, and PJ Link for full system integration.
- Lower Install Costs - Native competitor command support eliminates expensive reprogramming, making setup faster and more affordable.

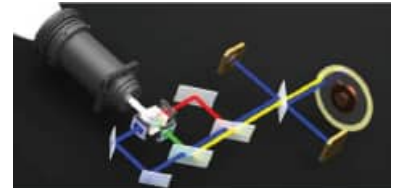
Flexible Installation, Your Way

- Swap lenses with ease - Motorized bayonet-style lenses make changes quick, with throw distances from 2.5 to 68.5 ft.
- Ultra-short throw option - The new lens lets you mount the projector above the screen or even above the ceiling line for a clean, hidden setup.
- Any angle, any space - Roll-free design supports portrait orientation and adapts to almost any environment.



Laser Power

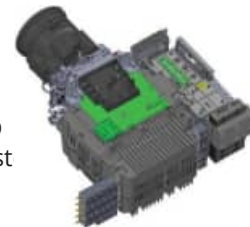
- Instant on - No wait time, images appear immediately after startup.
- Best-in-class balance - Dual blue lasers deliver consistent color and white balance throughout the projector's life.
- Built to last - Inorganic optical components extend reliability and peace of mind.



Virtually Maintenance Free

- Filter free design.
- IP5X certified Sealed LCD cooling system prevents dust from reaching the optics and eliminates the need for a filter.
- Peace of mind - No dust artifacts, no image degradation, just long-lasting performance.

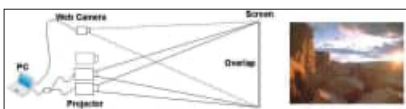
Sealed LCD
Cooling Syst



Brighter, Safer Visuals

Boost brightness up to 68,000 lumens with built-in stacking correction (up to four projectors) - perfect for massive screens and high ambient light environments.

Never lose the picture - if one projector goes down, your content stays visible.



Seamless Big-Screen Impact

Edge blending merges multiple projections into one flawless, high-resolution image - no seams, just a smooth, cinematic display.



ProAssist™ Total Control, Simplified

Manage multiple projectors with ease using ProAssist™ software.

Fine-tune every detail - from input switching and lens adjustments to edge blending, uniformity, and gamma - all from a simple, intuitive interface.

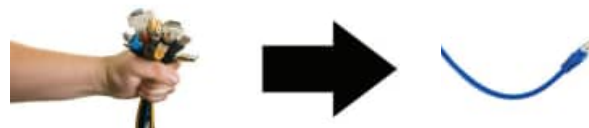
ProAssist™



Built-In HDBaseT: One Cable, Total Simplicity

Streamline installs with a single cable (up to 100m) carrying uncompressed Full HD video, audio, Ethernet, and control signals.

Cut costs, reduce clutter, and enjoy stunning visuals without extra hardware or complex wiring.



Stay Connected, Stay Flexible

- Multiple digital inputs for fast, seamless switching between presentations.
- Three audio inputs (HDMI1, HDMI2, and HDBaseT) let you easily add sound for a more engaging experience.

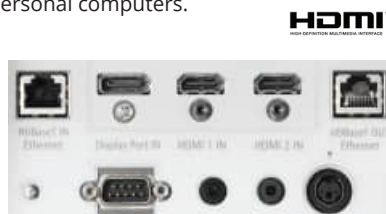
Remote control

Wired and wireless backlit remote allows you to adjust for complete control of the projectors menu structure in a well lit or dark environment. Direct controls such as lamp mode, aspect ratio, volume and input selection eliminates multiple button pushes.



Digital Inputs

Among the A Series' wide selection of inputs are dual HDMI w/ HDCP and HDBaseT w/ HDCP for connecting to high-definition sources such as Blu-ray players, cable boxes, satellite receivers and personal computers.



Cable Cover

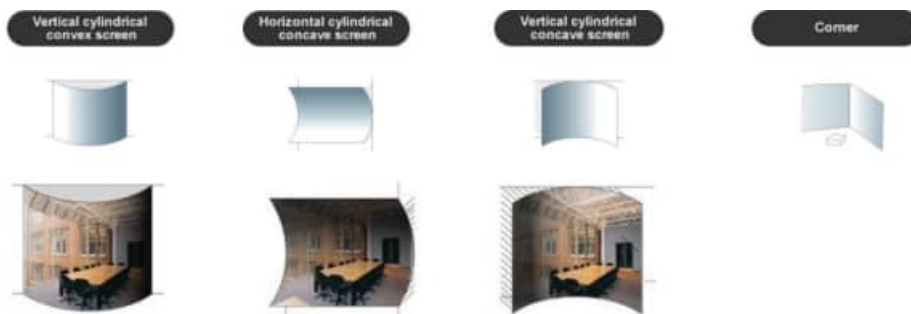
This included accessory creates a clean look for your installation, while hiding signal cables and the power cord.



Advanced Software Features

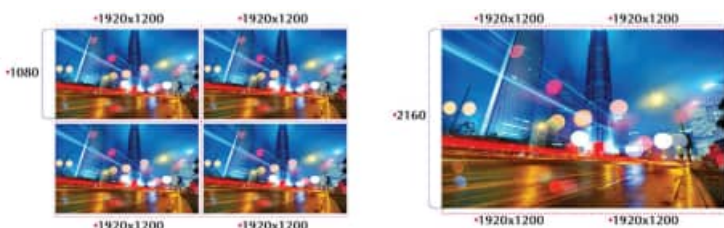
Geometric Correction

Projecting an image isn't confined to a standard flat screen or wall with the A Series. Geometric correction allows these models to project an image on spheres, cylinders, corner angles and many more non-standard surfaces.



Screen Splitter

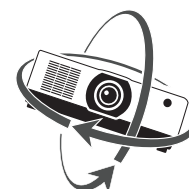
Sharp is committed to bringing the latest and greatest innovation to projectors. Multi-display capabilities and TileMatrix technologies are integrated into the new A Series projectors. This processing is all done internally and therefore eliminates the additional hardware typically required to produce a beautiful 4K resolution image.



Screen Splitter (Multi Display) by Daisy Chain

Roll Free

When installation requirements dictate the projector needs to be placed at different angles the A Series with Roll Free capabilities assures it is the correct projector of choice.



Cornerstone

Enhanced keystone correction allows for horizontal, vertical and diagonal image correction for aligned images even when the projector is set up at an angle to the screen.



Unique Features That Make a Difference

Maintenance made easy – IP5x sealed LCD cooling system eliminates filters, cutting ongoing maintenance and lowering total cost of ownership.

Simplified connectivity – HDBaseT in/out lets video, audio, and control signals pass between projectors effortlessly.

Quiet, focused experience – Low-noise operation keeps audiences engaged without distractions.

Seamless integration – Competitor command support reduces the need for reprogramming, saving time and installation costs.

Warranty

Registered owners receive a five (5) years or 20,000 hours (whichever comes first) parts and labor warranty including InstaCare next business day exchange.

In the Box

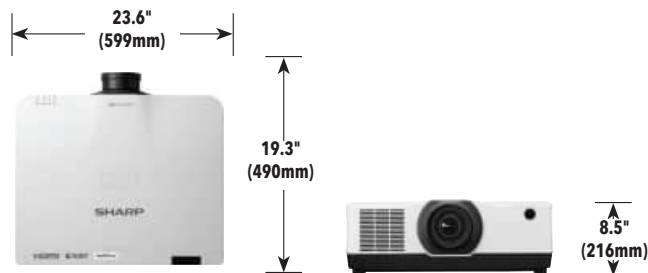
Remote control, batteries, power cord, cable cover, quick start guide, product registration card.

Accessories

RMT-PJ40	Replacement Remote Control
Optional Lenses	XP-40ZL, XP-41ZL, XP-43ZL, XP-44ML, XP-50ZL
IPJ2000CM	Ceiling Mount
AEC006009	Adjustable Extension Column, 6" - 9"
AEC012018	Adjustable Extension Column, 12" - 18" Adjustable
AEC0203	Extension Column, 2' - 3'
AEC0305	Adjustable Extension Column, 3' - 5'
XP-02LK	Mounting Bracket for XP-44ML

Ordering Model Numbers

XP-A824U-B	XP-A104U-B
XP-A824U-W	XP-A104U-W



		XP-A824U	XP-A104U
Display Technology		0.76" LCD	
Light Output (lumens)	Brightness (typical)	8,200 Lumens	10,000 Lumens
	Brightness (maximum)	8,600 Lumens	10,500 Lumens
Resolution	Screen	WUXGA 1920x1200	
	Maximum	4K 4096 x 2160	
Aspect Ratio		16:10 (Supports 4:3, 16:9, 21:9)	
Contrast Ratio (up to)		3,000,000:1 (with Dynamic Contrast)	
Laser Life (up to)		20,000 hours	
Screen Size (diagonal)		XP-50ZL, XP-40ZL, XP-41ZL, XP-43ZL: 60 to 500 in. / 1.52 to 12.7m, XP-44MK-02: 97-400 in. / 2.46 to 10.16 m	
Throw Ratio	XP-44ML	0.32:1	
	XP-50ZL	0.6-0.76:1	
	XP-40ZL	0.79 - 1.11:1	
	XP-41ZL	1.30 - 3.02:1	
	XP-43ZL	2.99 - 5.93:1	
Projection Distance		2.5 to 68.5 ft. / 0.74 to 20.9m	
Projection Angle		10.3 to 10.8° tele / 13.7 to 14.5° wide	
Lens	Zoom		Motorized
		XP-44ML	1.0x
		XP-50ZL	1.25x
		XP-40ZL	1.4x
		XP-41ZL	2.3x
		XP-43ZL	2.0x
	Focus	XP-44ML	Motorized zoom / focus, F=2.0, f= 6.27, 6.8 lbs. / 3.1 kg
		XP-50ZL	Motorized zoom / focus, F=1.9 to 2.1, f= 49.7 to 99.8mm, 5.5 lbs. / 2.5 kg
		XP-40ZL	Motorized zoom / focus, F=2.0 to 2.5, f= 13.3 to 18.6mm, 3.5lbs. / 1.6 kg
		XP-41ZL	Motorized zoom / focus, F=1.7 to 2.0, f= 21.8 to 49.8mm, 3.7 lbs. / 1.7 kg
		XP-43ZL	Motorized zoom / focus, F=2.2 to 2.6, f= 49.7 to 99.8mm, 3.7 lbs. / 1.7 kg
	Shift	+50/-10% Vertical, +/-20% Horizontal	
	Shutter	Laser Shutter	
Keystone Correction		+/- 40° horizontal, +/-40° vertical	
Synchronization Range	Horizontal	Analog: 15-100kHz, Digital: 15-153kHz	
	Vertical	Analog: 48-120Hz, Digital: 24-120Hz	
Supported Video Standards		NTSC, NTSC4.43, PAL, PAL-60, PAL-M, PAL-N, SECAM	
SD/HD Video Signal Compatibility		480i, 480p, 576i, 576p, 720p, 1080i, 1080p, 4K	
PC Signal Compatibility		VGA, SVGA, XGA, SXGA, SXGA+, UXGA, WUXGA, Quad HD	
Macintosh Compatibility		Yes	
Input Terminals	RGB1 (digital)	HDMI (V2.0) w/ HDCP (V1.4/2.2)	
	RGB2 (digital)	HDMI (V2.0) w/ HDCP (V1.4/2.2)	
	RGB3 (digital)	HDBaseT w/ HDCP (V1.4/2.2)	
Output Terminals	Monitor Out	HDBaseT w/ HDCP (V1.4/2.2)	
	Audio Out	Stereo Mini Jack	
External Control		9-Pin D-Sub, Wired Remote, HDBaseT, RJ-45, USB (USB 2.0)	
Sync Compatibility		Separate Sync / Composite Sync / Sync on G	
Power Requirements		100-240V AC, 50/60 Hz	
Input Current		8.6A - 3.8A	10.5A - 4.6A
Power Consumption			
(ECO off/ECO Mode/Standby/Standby-Power Saving)		635W / 515W / 0.8W / 0.22W	750W / 610W / 0.8W / 0.22W
Installation Orientation		Floor/Front, Floor/Rear, Ceiling/Front, Ceiling/Rear	
Product Dimensions (WxDxH)		23.6 x 8.5 x 19.3 in. / 599 x 216 x 490 mm	
Net Weight		53.1 lbs. / 24.1 kg	
Shipping Dimensions (WxDxH)		28.9 x 14.1 x 24.8 in. / 735 x 359 x 631 mm	
Gross Weight		63.3 lbs. / 28.7 kg	
Fan Noise		30 dB normal / 28 dB eco	35 dB normal / 32 dB eco
Regulations	US	USA UL60950-1: 2005+A1: 2009+A2: 2013, IEC 60825-1:2014 (Ed.3), FCC Part15 Subpart B(ANSI C63.4.2014)	
	Canada	CAN/CSA C22.2 No.62368-1-18,3rd Edition, ICES-003 Issue 7(ANSI C63.4-2014)	
Operating	Altitude	0 to 3650 m (12,000 ft)	
	Temperature	32-104°F / 0-40°C	
	Humidity	20 to 85% Humidity (Non-Condensing)	
Storage	Altitude	0-12,000m / 0-39,370ft (above sea level)	
	Temperature	14-122°F / -10 50°C	
	Humidity	20% - 80% (non-condensing)	

* Lens does not ship with the projector.
Additional accessories are available, including screens, carts, mount accessories and replacement cables.
Visit <https://www.sharpedisplays.us/> for details.



SHARP

SHARP ELECTRONICS CORPORATION
100 Paragon Drive, Montvale, NJ 07645
1-800-BE-SHARP • www.sharppusa.com

©2025 Sharp Electronics Corporation. All rights reserved. Sharp is a registered trademark of Sharp Corporation and/or its affiliated companies. All other trademarks are the property of their respective owners.

ProSelecta

View :: Compare :: Select - www.ProSelecta.com