



# GT4000UHD

## 4K UHD DuraCore Laser Projector

Space-Saving 4K Ultra-Short Throw Projector with Hassle-Free Remote Control and Seamless Updates



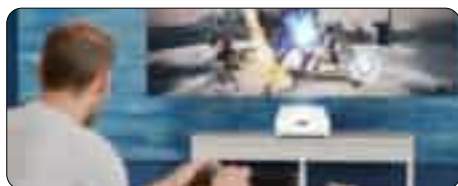
### Your Home Entertainment, Elevated

Elevate your home entertainment with ultra-smooth motion and vivid color accuracy. Enjoy richer colors, stunning clarity, and fluid motion that make every detail pop, creating an immersive experience that feels more real than ever.



### Big Screen, Small Space

Enjoy breathtaking 100" visuals from just inches away. With its ultra-short throw lens, the GT4000UHD is perfect for compact spaces—delivering bold, vibrant images without the need for a large room.



### Built for Victory: Enhanced Game Mode

Dominate every frame with lightning-fast 16.9ms input lag at 8ms at 120Hz 1080p, 4.3ms at 240Hz 1080p, and 16.9ms at 60Hz 4K. Whether you're on PC or next-gen consoles, enjoy razor-sharp responsiveness and seamless, low-latency gameplay.



### Experience Brilliant 4K UHD Clarity

Whether you're enjoying movie night, watching your favorite sporting event, or playing the latest and greatest game, the GT4000UHD delivers stunning 4K UHD-quality visuals that bring every detail to life. Experience vibrant colors, sharp clarity, and smooth motion, making every moment feel immersive and realistic.



### Seamless Management and Updates

With Firmware Over the Air (FOTA) technology, your projectors update effortlessly with an ethernet cable—no downtime. Seamless, real-time upgrades keep everything running smoothly and performing at their peak, so you're always one step ahead.



### Effortless Installations

Dial in perfect image alignment with precise 4-corner geometric correction, giving you complete control over each corner for a flawless fit. Combined with  $\pm 5^\circ$  horizontal and vertical keystone adjustment, it's easy to achieve a perfectly squared image—even in tricky or off-center installations.\*

# Product Specifications

|                       |   |   |
|-----------------------|---|---|
| Display/image         | Display technology                        | DLP™  |
|                       | Resolution                                | 4K UHD (3840x2160)  |
|                       | Brightness                                | 4,000 ANSI lumens   |
|                       | Contrast ratio                            | 500,000:1   |
|                       | Native aspect ratio                       | 16:9  |
|                       | Aspect ratio - support                    | 21:9, 4:3, LBX, Native, Auto  |
|                       | Horizontal scan rate                      | 15KHz ~ 150KHz  |
|                       | Vertical scan rate                        | 24KHz ~ 240KHz  |
|                       | Uniformity                                | 75%   |
|                       | Keystone                                  | 5°+/- Four corner correction  |
|                       | Digital Zoom                              | 80% - 200% (0.8 - 2.0x)   |
|                       | Screen size                               | 100" ~ 150" diagonal  |
| Laser Phosphor        | Light source type                         | DuraCore Laser  |
|                       | Light source life                         | 30,000 hours (Eco mode)   |
| Optical               | Throw ratio                               | 0.25:1  |
|                       | Projection distance                       | 10.53" - 21.43" (rear chassis to surface)   |
|                       | Zoom                                      | N/A   |
|                       | Zoom type                                 | Fixed   |
|                       | Focal length (mm)                         | -3.7 mm   |
|                       | Lens shift                                | N/A   |
| Connectivity          | Native offset                             | 120% ±5%  |
|                       | Connections                               | HDMIx2 (2.0), USBx1 (5V/1.5A), 3D Sync outx1, RJ-45x1, HDBaseT RX x1 (4K), Audio Outx1, RS232x1   |
| General               | Noise level (min)                         | 29dB (Eco mode)   |
|                       | Noise level (max)                         | UHD (3840x2160), WQHD (1440p), FHD (1080p)  |
|                       | PC compatibility                          | UHD, WQHD, WUXGA, FHD, UXGA, SXGA+, SXGA, WXGA, HD, SD, XGA, SVGA, VGA  |
|                       | 2D compatibility                          | 480i/p, 576i/p, 720p(50/60Hz), 1080i(50/60Hz), 1080p(50/60Hz), 2160p(50/60Hz)   |
|                       | 3D compatibility                          | Side-by-Side:1080i 50 / 60Hz, 720p 50 / 60Hz, 800x600 60Hz, 1024x768 60Hz, 1280x800 60Hz<br>Frame-pack:1080p 24Hz, 720p 50 / 60Hz<br>Top and Bottom: 1080p 24Hz, 1080i 50 / 60Hz, 720p 50 / 60Hz, 800x600 60Hz, 1024x768 60Hz, 1280x800 60Hz  |
|                       | 3D  | Full 3D   |
|                       | Security                                  | Security bar, Kensington Lock, Password protected interface   |
|                       | OSD / display languages                   | 27 languages:<br>English, Arabic, Czech, Danish, Dutch, Farsi, Finnish, French, German, Greek, Hungarian, Indonesian, Italian, Japanese, Korean, Norwegian, Polish, Portuguese, Romanian, Russian, Simplified Chinese, Spanish, Swedish, Thai, Traditional Chinese, Turkish, Vietnamese |
|                       | Operating conditions                      | 0 ~ 40°C; Tolerance +/- 2°C, Max Altitude 10,000 ft., for 0°C~30°C, Max humidity 80% RH, non-condensing   |
|                       | Remote control                            | IR remote   |
|                       | Speaker count                             | 1   |
|                       | Watts per speaker                         | 15W   |
|                       | In the box                                | Projector, QSG, Power Adapter and Cable, Remote, Batteries (2xAAA)  |
|                       | Input lag                                 | 4K60@16.9ms, 1080p60@17ms, 1080p120@8.6ms, 1080p240@4.3ms   |
| Networking            | LAN - control                             | Yes   |
| Power                 | Power supply                              | 100 ~ 240V, 50 ~ 60Hz   |
|                       | Power consumption (standby)               | 0.5W  |
|                       | "Power consumption Minimum:(ECO mode)"    | 180 W +/- 15% (typical)@110VAC<br>178 W +/- 15% (typical)@220VAC  |
|                       | "Power consumption Maximum:(Bright mode)" | 255 W +/- 15% (typical)@110VAC<br>250 W +/- 15% (typical)@220VAC  |
| Weight and dimensions | Dimensions (W x D x H)                    | 12.87" x 12.9" x 4.31"  |
|                       | Gross weight                              | 9lbs  |
|                       | UPC                                       | 796435 81 565 3   |
|                       | Warranty                                  | 1 Year Warranty   |



4K ULTRA HD



No.1 DLP Laser Brand Worldwide\*  
\*Data source: PMA Research:  
Worldwide Projector Census Y2024  
for projectors +1000 lumens

Optoma is a visual solutions provider that has delivered stunning experiences to millions of people since 2000. For the last two decades, we have grown our business to become one of the world's leading large-display brands. We have demonstrated our capabilities as a first-mover, innovator, and market leader and firmly established our position as the world's leading 4K UHD projector and DLP® brand.



Copyright © Optoma Technology 2025, Optoma and its logo is a registered trademark of Optoma Corporation and its affiliates ("Optoma"). All other product names and company names used herein are for identification purposes only and may be trademarks or registered trademarks of their respective owners other than Optoma, and Optoma disclaims any and all rights in these marks. All specifications are subject to change without notice. All images are for representation purposes only and may be simulated or AI generated content. DLP is a registered trademark of Texas Instruments. \*4-Corner Correction is an assist feature designed improve image alignment when projecting on various projection surfaces. Optimal performance when using this feature depends on a few factors such as projection angle, projector placement, and projection surface conditions.

