

SONY[®]

LCD Data Projector

VPL-FE110U/FE110M



R E A L
SXGA

With optional VPLL-Z3020 lens

The VPL-FE110 LCD Data **Native SXGA Resolution** **Brightness of 4000 ANSI**

Incorporating the latest advances in optical and electronic technologies, the VPL-FE110 provides the best solution for high-end fixed installations where performance and reliability are essential.

With native SXGA Sony LCD panels and support of signals up to UXGA, you can project high-resolution images that retain their clarity and detail, even on a large screen. Our unique four-lamp light source produces an outstanding 4000 ANSI lumens, and provides extra reliability by continuing to function even if one of the lamps fails.

And many other features are included to provide first-class standards of functionality. Combining these with superb picture performance and reliability, together with a high degree of convenience and operational simplicity, the VPL-FE110 is the solution for your large-venue visual communication challenges.

*The VPL-FE110 is available in two models:
the VPL-FE110U for countries operating at AC 100-120 V and
the VPL-FE110M for AC 220-240 V.



ta Projector from Sony—

l Lumens



PICTURE QUALITY

OUTSTANDING BRIGHTNESS OF 4000 ANSI LUMENS

Using three 1.8-inch Sony SXGA LCD panels, the VPL-FE110 delivers an outstanding brightness of 4000 ANSI lumens. No matter what the room lighting conditions, your presentation will always be clear and vibrant.

EXCELLENT PICTURE PERFORMANCE

The advanced technologies of the VPL-FE110 provide excellent picture performance. This projector utilizes 3D Digital Gamma correction for outstanding picture uniformity, as well as exclusive Sony Digital Reality Creation™ (DRC™) technology. DRC generates video pictures with effectively four times the resolution of that from a conventional video signal. Unlike conventional linear interpolation, which uses filtering techniques, DRC generates a high-resolution signal by referring to memorized waveform patterns. As a result, you can project high-density pictures in which the details of the objects are enhanced.

MULTISCAN CAPABILITY

With its high performance built-in scan converter, the VPL-FE110 is compatible with a variety of input sources: composite, Y/C, component (Y/R-Y/B-Y) and RGB video, as well as computer signals (up to UXGA, 1600 x 1200, fV: 75 Hz) with a horizontal frequency of 15 to 100 kHz and a vertical frequency of 40 to 120 Hz. The multiscan technology employed by the VPL-FE110 performs advanced interpolation and finite impulse response (FIR) filtering independently in both horizontal and vertical directions, depending on the line structure of the input signal.

HDTV AND DTV SUPPORT

With the progression toward HDTV and DTV, the VPL-FE110 is designed to support a wide variety of HDTV and DTV signals. For more details, please refer to the HDTV and DTV Signal Chart.

SYSTEM VERSATILITY

The VPL-FE110, like other Sony large venue projectors, is designed with versatility in mind. The option slots in the rear panel accept a range of Sony IFB Interface Boards that allow multiple sources to be connected to the projection system at the same time. The use of a PC-3000 Signal Interface Switcher will further enhance the ability of the projector to handle multiple signals simultaneously. The VPL-FE110 also supports RS-232C/422A control interfacing* and equips a TRIG terminal.

FAIL-SAFE

The light source of the VPL-FE110 incorporates four lamps so that even if one lamp fails, the projector will still continue to function. If a second fails, the projector automatically switches to standby mode.

LAMP LIGHTING MODE SELECTION

The VPL-FE110 can operate with only two of its four lamps functioning to provide a light output of 2000 ANSI lumens. In this mode, the life expectancy of a set of four lamps is doubled to 4,000 hours.



*When the INPUT C/RS-232C/RS-422A select switch is set to INPUT C, the VPL-FE110 cannot be controlled via RS-232C/422A.

INSTALLATION FLEXIBILITY

The VPL-FE110 is designed for use in a variety of installation situations - ceiling, floor, and even rear projection. To add even more flexibility, a wide range of lenses is available to provide the perfect match for your installation.

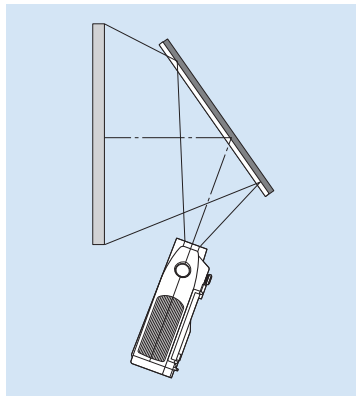
POWER FOCUS, POWER ZOOM, AND PICTURE SHIFT FUNCTIONS*

Power Focus and Power Zoom are easily controlled from the control panel or the supplied remote control unit. The projected image can be shifted up and down using the Picture Shift feature.

*Some optional lenses do not support the zoom function.

FREE TILT ANGLE

The front to back tilt angle of the VPL-FE110 is unlimited, and all projection angles are acceptable on this mounting plane. This enables you to create a very compact, rear-projection system.



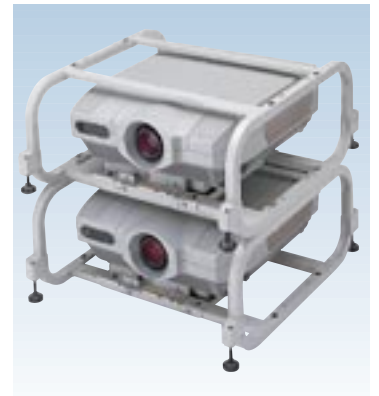
5:4 AND 4:3 ASPECT RATIO SUPPORT

Rather than limit your installation options, the VPL-FE110 expands them by making it easy to reproduce a wide variety of signals in their original aspects. With available resizing modes, the VPL-FE110 is able to project an entire 5:4 aspect ratio image within the screen, even if your screen is installed for use with 4:3 aspect ratio sources.

STACKING CAPABILITY*

The VPL-FE110 can be twin or triple stacked using optional SU-PJ2000 projector stands. When stacked, the brightness is significantly increased.

*The fixed focus lenses (VPLL-3050/2075/2014/2009) cannot be used when the VPL-FE110 is stacked.



EASY OPERATION

APA (Auto Pixel Alignment)

Pixel alignment is automated. Just press the APA key and innovative Sony technology detects the signal and adjusts for optimum image quality.

OSD (On-Screen Display)

The On-Screen Display for the VPL-FE110 is available in English, French, Spanish, Italian, German, Japanese and Chinese languages. With this projector's new graphical interface, it is very easy to use.



REMOTE CONTROL

The RM-PJ1001 wired/wireless remote control unit is supplied with the VPL-FE110 and controls all projector functions. The optional RM-PJM610 remote control unit is used when controlling the networking functions, and the RM-PJ3000S wired/wireless remote control unit provides simple remote control. The optional RM-PJ10 remote control receiver is available to extend the range of these remotes in wireless mode.



Remote control units

POWER SAVING

When the Power Saving mode is activated, the VPL-FE110 automatically enters the power saving mode if no signals have been received for 10 minutes. The projector returns to normal operation as soon as a signal is input.

◆ OPTIONAL LENSES

Note: Throw ratio is the distance between the center of the projector lens and the screen, divided by the screen width.



VPLL-Z3020

- 2.09-2.63:1 Throw ratio
- 1.3 times zoom standard focus lens



VPLL-Z2025

- 2.47-3.81:1 Throw ratio
- 1.6 times zoom long focus lens



VPLL-Z2039

- 3.93-5.65:1 Throw ratio
- 1.5 times zoom long focus lens



VPLL-3050

- 5.13:1 Throw ratio
- Fixed long focus lens

unit: mm (inches)

Lens: VPLL-Z3020 4:3										
Screen Size* (inches)		40	80	100	120	150	200	300	400	500
Floor Installation										
a	min	1590 (62 5/8)	3310 (130 3/8)	4170 (164 1/4)	5030 (198 1/16)	6310 (248 1/2)	8460 (333 1/8)	12750 (502 1/8)	17040 (671)	21330 (839 7/8)
	max	2030 (79 15/16)	4190 (165)	5260 (207 1/8)	6340 (249 3/4)	7950 (313 1/8)	10640 (419)	16020 (630 13/16)	21400 (842 5/8)	26780 (1054 1/2)
b	min	x-295 (x-11 5/8)	x-590 (x-23 1/4)	x-737 (x-29 1/8)	x-884 (x-34 7/8)	x-1106 (x-43 5/8)	x-1474 (x-58 1/8)	x-2211 (x-87 1/8)	x-2948 (x-116 1/8)	x-3685 (x-145 1/8)
	max	x								
c	min	x-450 (x-17 3/4)	x-745 (x-29 3/8)	x-892 (x-35 1/8)	x-1039 (x-41)	x-1261 (x-49 3/4)	x-1629 (x-64 1/4)	x-2366 (x-93 1/4)	x-3103 (x-122 1/4)	x-3840 (x-151 1/4)
	max	x-142 (x-5 5/8)								
Ceiling Installation										
a	min	1590 (62 5/8)	3310 (130 3/8)	4170 (164 1/4)	5030 (198 1/16)	6310 (248 1/2)	8460 (333 1/8)	12750 (502 1/8)	17040 (671)	21330 (839 7/8)
	max	2030 (79 15/16)	4190 (165)	5260 (207 1/8)	6340 (249 3/4)	7950 (313 1/8)	10640 (419)	16020 (630 13/16)	21400 (842 5/8)	26780 (1054 1/2)
b	min	c+131 (c+5 1/4)								
	max	c+144 (c+5 3/4)								
e	min	305 (12 1/8)	610 (24 1/8)	762 (30)	914 (36)	1143 (45)	1524 (60)	2286 (90 1/8)	3048 (120 1/16)	3810 (150 1/8)
	max	c+131 (c+5 1/4)								
x	min	c+131 (c+5 1/4)								
	max	c+438 (c+17 1/4)	c+733 (c+28 7/8)	c+881 (c+34 3/4)	c+1028 (c+40 1/2)	c+1249 (c+49 1/4)	c+1618 (c+63 3/4)	c+2355 (c+92 3/4)	c+3092 (c+121 3/4)	c+3829 (c+150 7/8)
Twin Stack (Floor Installation)										
a		—	3860 (152)	4840 (190 5/8)	5820 (229 1/4)	7300 (287 1/2)	9750 (384)	14670 (577 3/4)	19580 (771)	24500 (964 3/4)

Lens: VPLL-Z3020 5:4 (Screen: 4:3)										
Screen Size* (inches)		42	80	100	120	150	200	300	400	500
Floor Installation										
a	min	1570 (61 7/8)	3090 (121 3/4)	3900 (153 5/8)	4700 (185 1/8)	5910 (232 3/4)	7920 (311 7/8)	11940 (470 1/4)	15960 (628 1/2)	19980 (786 3/4)
	max	2000 (78 3/4)	3920 (154 3/8)	4920 (193 3/4)	5930 (233 1/2)	7440 (293)	9960 (392 1/4)	15000 (590 5/8)	20040 (789 1/8)	25080 (987 5/8)
b	min	x-286 (x-11 1/4)	x-544 (x-21 1/2)	x-680 (x-26 7/8)	x-816 (x-32 1/4)	x-1020 (x-40 1/4)	x-1360 (x-53 5/8)	x-2040 (x-80 3/8)	x-2720 (x-107 1/8)	x-3400 (x-134)
	max	x								
c	min	x-440 (x-17 3/8)	x-699 (x-27 5/8)	x-835 (x-32 7/8)	x-971 (x-38 1/4)	x-1175 (x-46 3/8)	x-1515 (x-59 3/4)	x-2195 (x-86 1/2)	x-2875 (x-113 1/4)	x-3555 (x-140)
	max	x-142 (x-5 5/8)								
Ceiling Installation										
a	min	1570 (61 7/8)	3090 (121 3/4)	3900 (153 5/8)	4700 (185 1/8)	5910 (232 3/4)	7920 (311 7/8)	11940 (470 1/4)	15960 (628 1/2)	19980 (786 3/4)
	max	2000 (78 3/4)	3920 (154 3/8)	4920 (193 3/4)	5930 (233 1/2)	7440 (293)	9960 (392 1/4)	15000 (590 5/8)	20040 (789 1/8)	25080 (987 5/8)
b	min	c+131 (c+5 1/4)								
	max	c+143 (c+5 3/4)								
e	min	317 (12 1/2)	605 (23 7/8)	756 (29 7/8)	907 (35 3/4)	1134 (44 3/4)	1512 (59 5/8)	2268 (89 3/8)	3024 (119 3/32)	3780 (148 7/8)
	max	c+131 (c+5 1/4)								
x	min	c+131 (c+5 1/4)								
	max	c+429 (c+17)	c+687 (c+27 1/8)	c+823 (c+32 1/2)	c+959 (c+37 7/8)	c+1163 (c+45 7/8)	c+1503 (c+59 1/4)	c+2184 (c+86)	c+2864 (c+112 7/8)	c+3544 (c+139 5/8)
Twin Stack (Floor Installation)										
a		—	3700 (145 3/4)	4640 (182 3/4)	5590 (220 1/8)	7000 (275 5/8)	9360 (368 5/8)	14080 (554 1/2)	18800 (740 1/4)	23520 (926 1/8)

* Viewable area, measured diagonally.

Lens: VPLL-Z2019 4:3										
Screen Size* (inches)		40	80	100	120	150	200	300	400	
Floor Installation										
a	min	1530 (60 1/4)	3170 (124 7/8)	3990 (157 1/8)	4800 (189)	6030 (237 7/16)	8080 (318 1/4)	12170 (479 1/4)	16260 (640 1/4)	
	max	1950 (76 7/8)	4000 (157 1/2)	5020 (197 11/16)	6040 (237 7/8)	7580 (298 1/2)	10140 (399 3/8)	15260 (600 7/8)	20380 (802 1/2)	
b	min	x-295 (x-11 5/8)	x-590 (x-23 1/4)	x-737 (x-29 1/8)	x-884 (x-34 7/8)	x-1106 (x-43 5/8)	x-1474 (x-58 1/8)	x-2211 (x-87 1/8)	x-2948 (x-116 1/8)	
	max	x								
c	min	x-450 (x-17 3/4)	x-745 (x-29 3/8)	x-892 (x-35 1/8)	x-1039 (x-41)	x-1261 (x-49 3/4)	x-1629 (x-64 1/4)	x-2366 (x-93 1/4)	x-3103 (x-122 1/4)	
	max	x-142 (x-5 5/8)								
Ceiling Installation										
a	min	1530 (60 1/4)	3170 (124 7/8)	3990 (157 1/8)	4800 (189)	6030 (237 7/16)	8080 (318 1/4)	12170 (479 1/4)	16260 (640 1/4)	
	max	1950 (76 7/8)	4000 (157 1/2)	5020 (197 11/16)	6040 (237 7/8)	7580 (298 1/2)	10140 (399 3/8)	15260 (600 7/8)	20380 (802 1/2)	
b	min	c+131 (c+5 1/4)								
	max	c+144 (c+5 3/4)								
e	min	305 (12 1/8)	610 (24 1/8)	762 (30)	914 (36)	1143 (45)	1524 (60)	2286 (90 1/8)	3048 (120 1/16)	
	max	c+131 (c+5 1/4)								
x	min	c+131 (c+5 1/4)								
	max	c+438 (c+17 1/4)	c+733 (c+28 7/8)	c+881 (c+34 3/4)	c+1028 (c+40 1/2)	c+1249 (c+49 1/4)	c+1618 (c+63 3/4)	c+2355 (c+92 3/4)	c+3092 (c+121 3/4)	
Twin Stack (Floor Installation)										
a		—	3710 (146 1/8)	4650 (183 1/8)	5600 (220 1/2)	7020 (276 7/16)	9380 (369 3/8)	14110 (555 5/8)	18840 (741 7/8)	

Lens: VPLL-Z2019 5:4 (Screen: 4:3)										
Screen Size* (inches)		42	80	100	120	150	200	300	400	
Floor Installation										
a	min	1500 (59 1/8)	2960 (116 5/8)	3730 (146 7/8)	4490 (176 7/8)	5640 (222 1/8)	7560 (297 3/4)	11390 (448 1/2)	15230 (599 3/4)	
	max	1910 (75 1/4)	3740 (147 3/8)	4700 (185 1/8)	5660 (222 7/8)	7100 (279 5/8)	9500 (374 1/8)	14300 (563 1/8)	19090 (751 3/4)	
b	min	x-286 (x-11 1/4)	x-544 (x-21 1/2)	x-680 (x-26 7/8)	x-816 (x-32 1/4)	x-1020 (x-40 1/4)	x-1360 (x-53 5/8)	x-2040 (x-80 3/8)	x-2720 (x-107 1/8)	
	max	x								
c	min	x-440 (x-17 3/8)	x-699 (x-27 5/8)	x-835 (x-32 7/8)	x-971 (x-38 1/4)	x-1175 (x-46 3/8)	x-1515 (x-59 3/4)	x-2195 (x-86 1/2)	x-2875 (x-113 1/4)	
	max	x-142 (x-5 5/8)								
Ceiling Installation										
a	min	1500 (59 1/8)	2960 (116 5/8)	3730 (146 7/8)	4490 (176 7/8)	5640 (222 1/8)	7560 (297 3/4)	11390 (448 1/2)	15230 (599 3/4)	
	max	1910 (75 1/4)	3740 (147 3/8)	4700 (185 1/8)	5660 (222 7/8)	7100 (279 5/8)	9500 (374 1/8)	14300 (563 1/8)	19090 (751 3/4)	
b	min	c+131 (c+5 1/4)								
	max	c+143 (c+5 3/4)								
e	min	317 (12 1/2)	605 (23 7/8)	756 (29 7/8)	907 (35 3/4)	1134 (44 3/4)	1512 (59 5/8)	2268 (89 3/8)	3024 (119 3/32)	
	max	c+131 (c+5 1/4)								
x	min	c+131 (c+5 1/4)								
	max	c+429 (c+17)	c+687 (c+27 1/8)	c+823 (c+32 1/2)	c+959 (c+37 7/8)	c+1163 (c+45 7/8)	c+1503 (c+59 1/4)	c+2184 (c+86)	c+2864 (c+112 7/8)	
Twin Stack (Floor Installation)										
a		—	3560 (140 1/4)	4460 (175 5/8)	5370 (211 1/2)	6730 (265)	9000 (354 3/8)	13540 (533 1/4)	18080 (712)	

INSTALLATION EXAMPLES



VPLL-2075

- 7.38:1 Throw ratio
- Fixed long focus lens

VPLL-2014

- 1.36:1 Throw ratio
- Fixed short focus lens

VPLL-2009

- 0.89:1 Throw ratio
- Fixed short focus lens

io
s lens

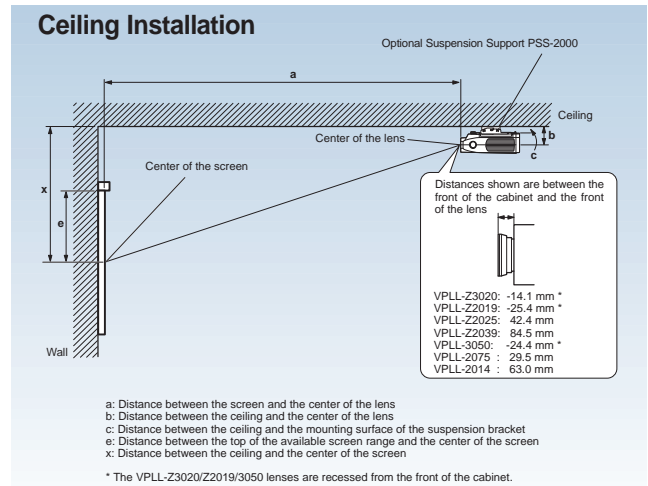
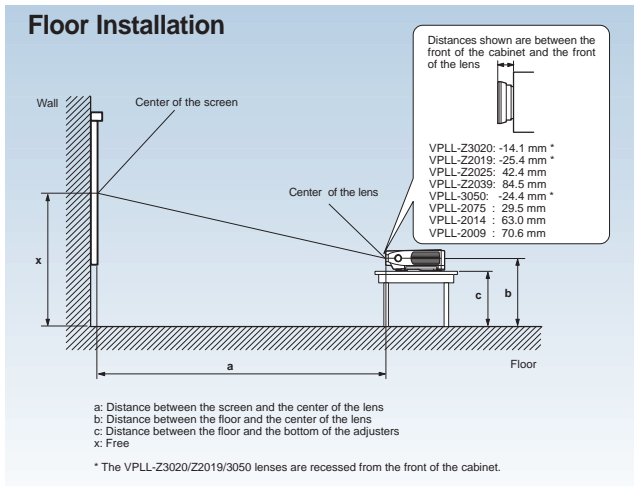
Lens: VPLL-Z2025 4:3									
Screen Size* (Inches)	80	100	120	150	200	300	400	500	
Floor Installation									
a	min	4100 (161 1/2)	5170 (203 5/8)	6240 (245 3/4)	7850 (309 1/8)	10520 (414 1/4)	15870 (625)	21220 (835 5/8)	26580 (1046 5/8)
	max	6340 (249 3/4)	7970 (313 7/8)	9600 (378)	12040 (474 1/8)	16120 (634 3/4)	24260 (955 1/4)	32400 (1275 3/4)	40550 (1596 3/4)
b	min	x-590 (x-23 1/4)	x-737 (x-29 1/8)	x-884 (x-34 7/8)	x-1106 (x-43 5/8)	x-1474 (x-58 1/8)	x-2211 (x-87 1/8)	x-2948 (x-116 1/8)	x-3685 (x-145 1/8)
	max	x							
c	min	x-745 (x-29 3/8)	x-892 (x-35 1/8)	x-1039 (x-41)	x-1261 (x-49 3/4)	x-1629 (x-64 1/4)	x-2366 (x-93 1/4)	x-3103 (x-122 1/4)	x-3840 (x-151 1/4)
	max	x-142 (x-5 5/8)							
Ceiling Installation									
a	min	4100 (161 1/2)	5170 (203 5/8)	6240 (245 3/4)	7850 (309 1/8)	10520 (414 1/4)	15870 (625)	21220 (835 5/8)	26580 (1046 5/8)
	max	6340 (249 3/4)	7970 (313 7/8)	9600 (378)	12040 (474 1/8)	16120 (634 3/4)	24260 (955 1/4)	32400 (1275 3/4)	40550 (1596 3/4)
b	min	c+131 (c+5 1/4)							
	max	c+144 (c+5 3/4)							
e	min	610 (24 1/8)	762 (30)	914 (36)	1143 (45)	1524 (60)	2286 (90 1/8)	3048 (120 1/16)	3810 (150 1/8)
	max	c+131 (c+5 1/4)							
x	min	c+733 (c+28 7/8)	c+881 (c+34 3/4)	c+1028 (c+40 1/2)	c+1249 (c+49 1/4)	c+1618 (c+63 3/4)	c+2355 (c+92 3/4)	c+3092 (c+121 3/4)	c+3829 (c+150 7/8)
	max	c+142 (x-5 5/8)							
Twin Stack (Floor Installation)									
a	min	4460 (175 5/8)	5650 (222 1/2)	6830 (269)	8610 (339 1/8)	11580 (456)	17510 (689 1/2)	23450 (923 3/8)	29380 (1156 7/8)

Lens: VPLL-Z2039 4:3									
Screen Size* (Inches)	80	100	120	150	200	300	400	500	
Floor Installation									
a	min	6540 (257 5/8)	8220 (323 3/4)	9900 (389 7/8)	12420 (489 1/8)	16610 (654 1/8)	25000 (984 3/8)	33390 (1314 3/4)	41780 (1645 1/8)
	max	9420 (371)	11810 (465 1/8)	14210 (559 5/8)	17800 (700 7/8)	23780 (936 3/8)	35750 (1407 3/4)	47720 (1879)	59690 (2350 3/8)
b	min	x-590 (x-23 1/4)	x-737 (x-29 1/8)	x-884 (x-34 7/8)	x-1106 (x-43 5/8)	x-1474 (x-58 1/8)	x-2211 (x-87 1/8)	x-2948 (x-116 1/8)	x-3685 (x-145 1/8)
	max	x							
c	min	x-745 (x-29 3/8)	x-892 (x-35 1/8)	x-1039 (x-41)	x-1261 (x-49 3/4)	x-1629 (x-64 1/4)	x-2366 (x-93 1/4)	x-3103 (x-122 1/4)	x-3840 (x-151 1/4)
	max	x-142 (x-5 5/8)							
Ceiling Installation									
a	min	6540 (257 5/8)	8220 (323 3/4)	9900 (389 7/8)	12420 (489 1/8)	16610 (654 1/8)	25000 (984 3/8)	33390 (1314 3/4)	41780 (1645 1/8)
	max	9420 (371)	11810 (465 1/8)	14210 (559 5/8)	17800 (700 7/8)	23780 (936 3/8)	35750 (1407 3/4)	47720 (1879)	59690 (2350 3/8)
b	min	c+131 (c+5 1/4)							
	max	c+144 (c+5 3/4)							
e	min	610 (24 1/8)	762 (30)	914 (36)	1143 (45)	1524 (60)	2286 (90 1/8)	3048 (120 1/16)	3810 (150 1/8)
	max	c+131 (c+5 1/4)							
x	min	c+733 (c+28 7/8)	c+881 (c+34 3/4)	c+1028 (c+40 1/2)	c+1249 (c+49 1/4)	c+1618 (c+63 3/4)	c+2355 (c+92 3/4)	c+3092 (c+121 3/4)	c+3829 (c+150 7/8)
	max	c+142 (x-5 5/8)							
Twin Stack (Floor Installation)									
a	min	6840 (269 3/8)	8590 (338 1/4)	10340 (407 1/4)	12970 (510 3/4)	17340 (682 7/8)	26100 (1027 3/4)	34850 (1372 1/4)	43610 (1717 1/4)

Lens: VPLL-Z2025 5:4 (Screen: 4:3)									
Screen Size* (Inches)	84	100	120	150	200	300	400	500	
Floor Installation									
a	min	4030 (158 11/16)	4830 (190 1/4)	5840 (230)	7340 (289 1/8)	9850 (387 7/8)	14860 (585 1/8)	19880 (782 7/8)	24890 (980 1/8)
	max	6240 (245 3/4)	7460 (293 3/4)	8990 (354)	11280 (444 1/4)	15090 (594 1/4)	22720 (894 5/8)	30350 (1195 1/8)	37990 (1495 7/8)
b	min	x-571 (x-22 1/2)	x-680 (x-26 7/8)	x-816 (x-32 1/4)	x-1020 (x-40 1/4)	x-1360 (x-53 5/8)	x-2040 (x-80 3/8)	x-2720 (x-107 1/8)	x-3400 (x-134)
	max	x							
c	min	x-726 (x-28 5/8)	x-835 (x-32 7/8)	x-971 (x-38 1/4)	x-1175 (x-46 3/8)	x-1515 (x-59 3/4)	x-2195 (x-86 1/2)	x-2875 (x-113 1/4)	x-3555 (x-140)
	max	x-142 (x-5 5/8)							
Ceiling Installation									
a	min	4030 (158 11/16)	4830 (190 1/4)	5840 (230)	7340 (289 1/8)	9850 (387 7/8)	14860 (585 1/8)	19880 (782 7/8)	24890 (980 1/8)
	max	6240 (245 3/4)	7460 (293 3/4)	8990 (354)	11280 (444 1/4)	15090 (594 1/4)	22720 (894 5/8)	30350 (1195 1/8)	37990 (1495 7/8)
b	min	c+131 (c+5 1/4)							
	max	c+143 (c+5 3/4)							
e	min	635 (25)	756 (29 7/8)	907 (35 3/4)	1134 (44 3/4)	1512 (59 5/8)	2268 (89 3/8)	3024 (119 3/32)	3780 (148 7/8)
	max	c+131 (c+5 1/4)							
x	min	c+715 (c+28 1/4)	c+823 (c+32 1/2)	c+959 (c+37 7/8)	c+1163 (c+45 7/8)	c+1503 (c+59 1/4)	c+2184 (c+86)	c+2864 (c+112 7/8)	c+3544 (c+139 5/8)
	max	c+142 (x-5 5/8)							
Twin Stack (Floor Installation)									
a	min	4500 (177 1/4)	5410 (213 1/8)	6550 (258)	8260 (325 1/4)	11100 (437 1/8)	16800 (661 1/2)	22500 (886)	28190 (1110)

Lens: VPLL-Z2039 5:4 (Screen: 4:3)									
Screen Size* (Inches)	84	100	120	150	200	300	400	500	
Floor Installation									
a	min	6440 (253 5/8)	7690 (302 7/8)	9270 (365 1/8)	11630 (458)	15560 (612 3/4)	23420 (922 1/4)	31280 (1231 3/4)	39140 (1541 1/4)
	max	9260 (364 5/8)	11060 (435 1/2)	13300 (523 3/4)	16670 (656 1/2)	22280 (877 3/8)	33490 (1318 3/4)	44710 (1760 1/2)	55930 (2202 1/4)
b	min	x-571 (x-22 1/2)	x-680 (x-26 7/8)	x-816 (x-32 1/4)	x-1020 (x-40 1/4)	x-1360 (x-53 5/8)	x-2040 (x-80 3/8)	x-2720 (x-107 1/8)	x-3400 (x-134)
	max	x							
c	min	x-726 (x-28 5/8)	x-835 (x-32 7/8)	x-971 (x-38 1/4)	x-1175 (x-46 3/8)	x-1515 (x-59 3/4)	x-2195 (x-86 1/2)	x-2875 (x-113 1/4)	x-3555 (x-140)
	max	x-142 (x-5 5/8)							
Ceiling Installation									
a	min	6440 (253 5/8)	7690 (302 7/8)	9270 (365 1/8)	11630 (458)	15560 (612 3/4)	23420 (922 1/4)	31280 (1231 3/4)	39140 (1541 1/4)
	max	9260 (364 5/8)	11060 (435 1/2)	13300 (523 3/4)	16670 (656 1/2)	22280 (877 3/8)	33490 (1318 3/4)	44710 (1760 1/2)	55930 (2202 1/4)
b	min	c+131 (c+5 1/4)							
	max	c+143 (c+5 3/4)							
e	min	635 (25)	756 (29 7/8)	907 (35 3/4)	1134 (44 3/4)	1512 (59 5/8)	2268 (89 3/8)	3024 (119 3/32)	3780 (148 7/8)
	max	c+131 (c+5 1/4)							
x	min	c+715 (c+28 1/4)	c+823 (c+32 1/2)	c+959 (c+37 7/8)	c+1163 (c+45 7/8)	c+1503 (c+59 1/4)	c+2184 (c+86)	c+2864 (c+112 7/8)	c+3544 (c+139 5/8)
	max	c+142 (x-5 5/8)							
Twin Stack (Floor Installation)									
a	min	6900 (271 3/4)	8240 (324 1/2)	9920 (390 5/8)	12440 (489 7/8)	16640 (655 1/4)	25050 (986 3/8)	33450 (1317 1/8)	41850 (1647 7/8)

◆ INSTALLATIONS



Lens: VPLL-3050 4:3									
Screen Size* (inches)	80	100	120	150	200	300	400	500	
Floor Installation									
a	8200 (322 7/8)	10250 (403 5/8)	12290 (484)	15350 (604 1/2)	20460 (805 5/8)	30680 (1208 1/8)	40900 (1610 1/2)	51110 (2012 1/2)	
b	min	x-590 (x-23 1/4)	x-737 (x-29 1/8)	x-884 (x-34 7/8)	x-1106 (x-43 5/8)	x-1474 (x-58 1/8)	x-2211 (x-87 1/8)	x-2948 (x-116 1/8)	
	max	x							x-3685 (x-145 1/8)
c	min	x-745 (x-29 3/8)	x-892 (x-35 1/8)	x-1039 (x-41)	x-1261 (x-49 3/4)	x-1629 (x-64 1/4)	x-2366 (x-93 1/4)	x-3103 (x-122 1/4)	
	max	x-142 (x-5 5/8)							x-3840 (x-151 1/4)
Ceiling Installation									
a	8200 (322 7/8)	10250 (403 5/8)	12290 (484)	15350 (604 1/2)	20460 (805 5/8)	30680 (1208 1/8)	40900 (1610 1/2)	51110 (2012 1/2)	
b	min	c+131 (c+5 1/4)							
	max	c+144 (c+5 3/4)							
e	610 (24 1/8)	762 (30)	914 (36)	1143 (45)	1524 (60)	2286 (90 1/8)	3048 (120 1/16)	3810 (150 1/8)	
x	min	c+131 (c+5 1/4)							
	max	c+733 (c+28 7/8)	c+881 (c+34 3/4)	c+1028 (c+40 1/2)	c+1249 (c+49 1/4)	c+1618 (c+63 3/4)	c+2355 (c+92 3/4)	c+3092 (c+121 3/4)	c+3829 (c+150 7/8)

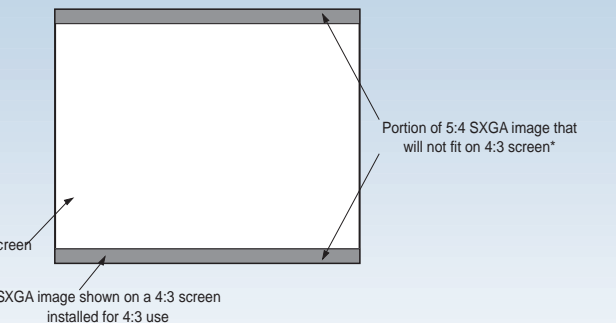
Lens: VPLL-2075 4:3									
Screen Size* (inches)	80	100	120	150	200	300	400	500	
Floor Installation									
a	12370 (487 1/8)	15420 (607 1/4)	18470 (727 3/8)	23050 (907 5/8)	30680 (1208 1/8)	45930 (1808 1/2)	61190 (2409 3/8)	76450 (3010 1/4)	
b	min	x-590 (x-23 1/4)	x-737 (x-29 1/8)	x-884 (x-34 7/8)	x-1106 (x-43 5/8)	x-1474 (x-58 1/8)	x-2211 (x-87 1/8)	x-2948 (x-116 1/8)	
	max	x							x-3685 (x-145 1/8)
c	min	x-745 (x-29 3/8)	x-892 (x-35 1/8)	x-1039 (x-41)	x-1261 (x-49 3/4)	x-1629 (x-64 1/4)	x-2366 (x-93 1/4)	x-3103 (x-122 1/4)	
	max	x-142 (x-5 5/8)							x-3840 (x-151 1/4)
Ceiling Installation									
a	12370 (487 1/8)	15420 (607 1/4)	18470 (727 3/8)	23050 (907 5/8)	30680 (1208 1/8)	45930 (1808 1/2)	61190 (2409 3/8)	76450 (3010 1/4)	
b	min	c+131 (c+5 1/4)							
	max	c+144 (c+5 3/4)							
e	610 (24 1/8)	762 (30)	914 (36)	1143 (45)	1524 (60)	2286 (90 1/8)	3048 (120 1/16)	3810 (150 1/8)	
x	min	c+131 (c+5 1/4)							
	max	c+733 (c+28 7/8)	c+881 (c+34 3/4)	c+1028 (c+40 1/2)	c+1249 (c+49 1/4)	c+1618 (c+63 3/4)	c+2355 (c+92 3/4)	c+3092 (c+121 3/4)	c+3829 (c+150 7/8)

Lens: VPLL-3050 5:4 (Screen: 4:3)									
Screen Size* (inches)	84	100	120	150	200	300	400	500	
Floor Installation									
a	8070 (317 7/8)	9600 (378)	11520 (453 5/8)	14390 (566 5/8)	19180 (755 1/4)	28750 (1132 1/8)	38320 (1508 7/8)	47900 (1886 1/8)	
b	min	x-571 (x-22 1/2)	x-680 (x-26 7/8)	x-816 (x-32 1/4)	x-1020 (x-40 1/4)	x-1360 (x-53 5/8)	x-2040 (x-80 3/8)	x-2720 (x-107 1/8)	
	max	x							x-3400 (x-134)
c	min	x-726 (x-28 5/8)	x-835 (x-32 7/8)	x-971 (x-38 1/4)	x-1175 (x-46 3/8)	x-1515 (x-59 3/4)	x-2195 (x-86 1/2)	x-2875 (x-113 1/4)	
	max	x-142 (x-5 5/8)							x-3555 (x-140)
Ceiling Installation									
a	8070 (317 7/8)	9600 (378)	11520 (453 5/8)	14390 (566 5/8)	19180 (755 1/4)	28750 (1132 1/8)	38320 (1508 7/8)	47900 (1886 1/8)	
b	min	c+131 (c+5 1/4)							
	max	c+143 (c+5 3/4)							
e	635 (25)	756 (29 7/8)	907 (35 3/4)	1134 (44 3/4)	1512 (59 5/8)	2268 (89 3/8)	3024 (119 3/32)	3780 (148 7/8)	
x	min	c+131 (c+5 1/4)							
	max	c+715 (c+28 1/4)	c+823 (c+32 1/2)	c+959 (c+37 7/8)	c+1163 (c+45 7/8)	c+1503 (c+59 1/4)	c+2184 (c+86)	c+2864 (c+112 7/8)	c+3544 (c+139 5/8)

Lens: VPLL-2075 5:4 (Screen: 4:3)									
Screen Size* (inches)	84	100	120	150	200	300	400	500	
Floor Installation									
a	12170 (479 1/4)	14460 (569 3/8)	17320 (682)	21610 (851)	28760 (1132 1/2)	43050 (1695 1/8)	57350 (2258 1/4)	71650 (2821 1/4)	
b	min	x-571 (x-22 1/2)	x-680 (x-26 7/8)	x-816 (x-32 1/4)	x-1020 (x-40 1/4)	x-1360 (x-53 5/8)	x-2040 (x-80 3/8)	x-2720 (x-107 1/8)	
	max	x							x-3400 (x-134)
c	min	x-726 (x-28 5/8)	x-835 (x-32 7/8)	x-971 (x-38 1/4)	x-1175 (x-46 3/8)	x-1515 (x-59 3/4)	x-2195 (x-86 1/2)	x-2875 (x-113 1/4)	
	max	x-142 (x-5 5/8)							x-3555 (x-140)
Ceiling Installation									
a	12170 (479 1/4)	14460 (569 3/8)	17320 (682)	21610 (851)	28760 (1132 1/2)	43050 (1695 1/8)	57350 (2258 1/4)	71650 (2821 1/4)	
b	min	c+131 (c+5 1/4)							
	max	c+143 (c+5 3/4)							
e	635 (25)	756 (29 7/8)	907 (35 3/4)	1134 (44 3/4)	1512 (59 5/8)	2268 (89 3/8)	3024 (119 3/32)	3780 (148 7/8)	
x	min	c+131 (c+5 1/4)							
	max	c+715 (c+28 1/4)	c+823 (c+32 1/2)	c+959 (c+37 7/8)	c+1163 (c+45 7/8)	c+1503 (c+59 1/4)	c+2184 (c+86)	c+2864 (c+112 7/8)	c+3544 (c+139 5/8)

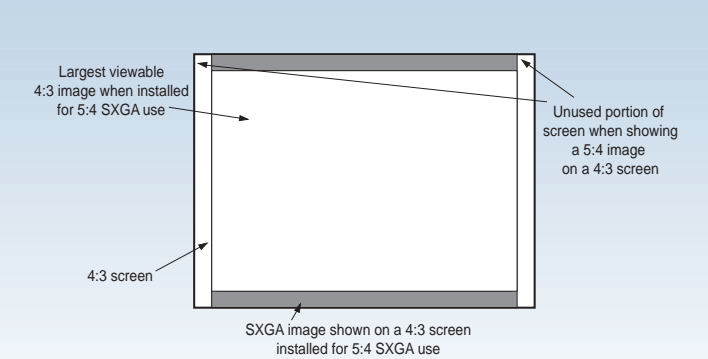
ASPECT RATIOS

Screen installed for use with 4:3 aspect ratio sources



Not available to show entire 5:4 image on a 4:3 screen

4:3 screen installed for use with 5:4 aspect ratio SXGA source



L-2014 4:3

Screen Size* (inches)	40	80	100	120	150	200	300	400	500
Projection									
min	1060 (41 3/4)	2250 (88 5/8)	2840 (111 7/8)	3430 (135 1/8)	4320 (170 1/8)	5800 (228 3/8)	8760 (345)	11720 (461 1/2)	14690 (578 1/2)
center	x-222 (x-8 3/4)	x-445 (x-17 1/2)	x-556 (x-21 7/8)	x-667 (x-26 1/4)	x-833 (x-32 7/8)	x-1111 (x-43 3/4)	x-1667 (x-65 3/4)	x-2223 (x-87 5/8)	x-2778 (x-109 1/2)
x									
max	x-374 (x-14 3/4)	x-596 (x-23 1/2)	x-707 (x-27 7/8)	x-819 (x-32 1/4)	x-985 (x-38 7/8)	x-1263 (x-49 3/4)	x-1819 (x-71 5/8)	x-2374 (x-93 1/2)	x-2930 (x-115 3/8)
x-142 (x-5 5/8)									
Frontal									
min	1060 (41 3/4)	2250 (88 5/8)	2840 (111 7/8)	3430 (135 1/8)	4320 (170 1/8)	5800 (228 3/8)	8760 (345)	11720 (461 1/2)	14690 (578 1/2)
center	c+131 (c+5 1/4)								
max	c+140 (c+5 1/2)								
min	305 (12 1/8)	610 (24 1/8)	762 (30)	914 (36)	1143 (45)	1524 (60)	2286 (90 1/8)	3048 (120 1/16)	3810 (150 1/8)
c+131 (c+5 1/4)									
max	c+363 (c+14 3/8)	c+585 (c+23 1/8)	c+696 (c+27 1/2)	c+807 (c+31 7/8)	c+974 (c+38 3/8)	c+1252 (c+49 3/8)	c+1807 (c+71 1/4)	c+2363 (c+93 1/8)	c+2919 (c+115)

L-2014 5:4 (Screen: 4:3)

Screen Size* (inches)	42	80	100	120	150	200	300	400	500
Projection									
min	1040 (41)	2210 (87 1/8)	2650 (104 3/8)	3210 (126 1/2)	4040 (159 1/8)	5430 (213 7/8)	8200 (322 7/8)	10980 (432 3/8)	13750 (541 1/2)
center	x-199 (x-7 7/8)	x-397 (x-15 3/4)	x-473 (x-18 5/8)	x-567 (x-22 3/8)	x-709 (x-28)	x-946 (x-37 1/4)	x-1419 (x-55 7/8)	x-1891 (x-74 1/2)	x-2364 (x-93 1/8)
x									
max	x-349 (x-13 7/8)	x-548 (x-21 5/8)	x-624 (x-24 5/8)	x-718 (x-28 3/8)	x-860 (x-33 7/8)	x-1097 (x-43 1/4)	x-1569 (x-61 7/8)	x-2042 (x-80 7/16)	x-2515 (x-99 1/8)
x-142 (x-5 5/8)									
Frontal									
min	1040 (41)	2210 (87 1/8)	2650 (104 3/8)	3210 (126 1/2)	4040 (159 1/8)	5430 (213 7/8)	8200 (322 7/8)	10980 (432 3/8)	13750 (541 1/2)
center	c+131 (c+5 1/4)								
max	c+140 (c+5 1/2)								
min	317 (12 1/2)	605 (23 7/8)	756 (29 7/8)	907 (35 3/4)	1134 (44 3/4)	1512 (59 5/8)	2268 (89 3/8)	3024 (119 3/32)	3780 (148 7/8)
c+131 (c+5 1/4)									
max	c+338 (c+13 3/8)	c+537 (c+21 1/4)	c+612 (c+24 1/8)	c+707 (c+27 7/8)	c+849 (c+33 1/2)	c+1085 (c+42 3/4)	c+1558 (c+61 3/8)	c+2031 (c+80)	c+2504 (c+98 5/8)

Lens: VPLL-2009 4:3

Screen Size* (inches)	40	80	100	120	150	200	300	400	500	
Floor Installation										
a	660 (26)	1460 (57 1/2)	1860 (73 1/4)	2250 (88 5/8)	2850 (112 1/4)	3840 (151 1/4)	5830 (229 5/8)	7820 (308)	9810 (386 3/8)	
b	min	x-34 (x-1 3/8)	x-68 (x-2 3/4)	x-85 (x-3 3/8)	x-102 (x-4 1/8)	x-128 (x-5 1/8)	x-170 (x-6 3/4)	x-255 (x-10 1/8)	x-340 (x-13 1/2)	x-425 (x-16 3/4)
center	x									
max	x+11 (x+15/32)	x+23 (x+29/32)	x+28 (x+1 1/8)	x+34 (x+1 3/8)	x+43 (x+1 11/16)	x+57 (x+2 1/4)	x+85 (x+3 3/8)	x+113 (x+4 1/2)	x+142 (x+5 5/8)	
c	min	x-178 (x-7)	x-212 (x-8 3/8)	x-229 (x-9)	x-246 (x-9 3/4)	x-271 (x-10 3/4)	x-314 (x-12 3/8)	x-399 (x-15 3/4)	x-484 (x-19 1/8)	x-569 (x-22 1/2)
center	x-142 (x-5 5/8)									
max	x-76 (x-3)	x-64 (x-2 5/8)	x-59 (x-2 3/8)	-x+53 (x+0)	-x+44 (x+0)	-x+30 (x+0)	-x+2 (x+0)	x+26 (x+1 1/16)	x+55 (x+2 1/4)	

Lens: VPLL-2009 5:4 (Screen: 4:3)

Screen Size* (inches)	42	80	100	120	150	200	300	400	500	
Floor Installation										
a	650 (25 5/8)	1430 (56 3/8)	1730 (68 1/8)	2100 (82 3/4)	2660 (104 3/4)	3590 (141 3/8)	5460 (215)	7320 (288 1/4)	9180 (361 1/2)	
b	min	x-13 (x-17/32)	x-27 (x-1 1/16)	x-32 (x-1 5/16)	x-38 (x-1 9/16)	x-48 (x-1 15/16)	x-64 (x-2 5/8)	x-96 (x-3 7/8)	x-128 (x-5 1/8)	x-159 (x-6 3/8)
center	x									
max	x+11 (x+7/16)	x+22 (x+29/32)	x+27 (x+1 1/16)	x+32 (x+1 5/16)	x+40 (x+1 5/8)	x+53 (x+2 1/8)	x+80 (x+3 1/4)	x+106 (x+4 1/4)	x+133 (x+5 1/4)	
c	min	x-156 (x-6 1/4)	x-169 (x-6 3/4)	x-174 (x-6 7/8)	x-181 (x-7 1/8)	x-190 (x-7 1/2)	x-206 (x-8 1/8)	x-238 (x-9 1/2)	x-270 (x-10 3/4)	x-302 (x-12)
center	x-142 (x-5 5/8)									
max	x-76 (x-3)	x-65 (x-2 5/8)	x-60 (x-2 1/2)	x-55 (x-2 1/4)	x-47 (x-1 7/8)	x-34 (x-1 3/8)	-x+7 (x+0)	x+19 (x+25/32)	x+46 (x+1 13/16)	

NETWORKING CAPABILITY

The VPL- FE110 is the first projector from Sony to pack an all new networking function, expanding the possibilities for visual communication.

LAN CONNECTION

The VPL-FE110 is equipped with a PC Card slot (INPUT C). By inserting a LAN/wireless LAN PC Card*1*2, the projector can be connected to a LAN (Local Area Network).

The VPL-FE110 incorporates the Sony original application software "Presentation Viewer", which enables to open and project your Microsoft® PowerPoint® presentation files with the projector. When the VPL-FE110 is connected to a LAN, files shared on the network can be retrieved and opened for projection using the optional RM-PJM610 remote control unit. It is also possible to send your presentation files to the projector from a using PC connected to the LAN. Browsing through the Internet is possible as well, using the web browser provided in the projector.

*1 For wireless connection, an Access Point is also required.

*2 Recommended LAN PC Card, Wireless LAN PC Card, Memory Card and Access Point may vary by area. For more details, please contact your nearest Sony office.

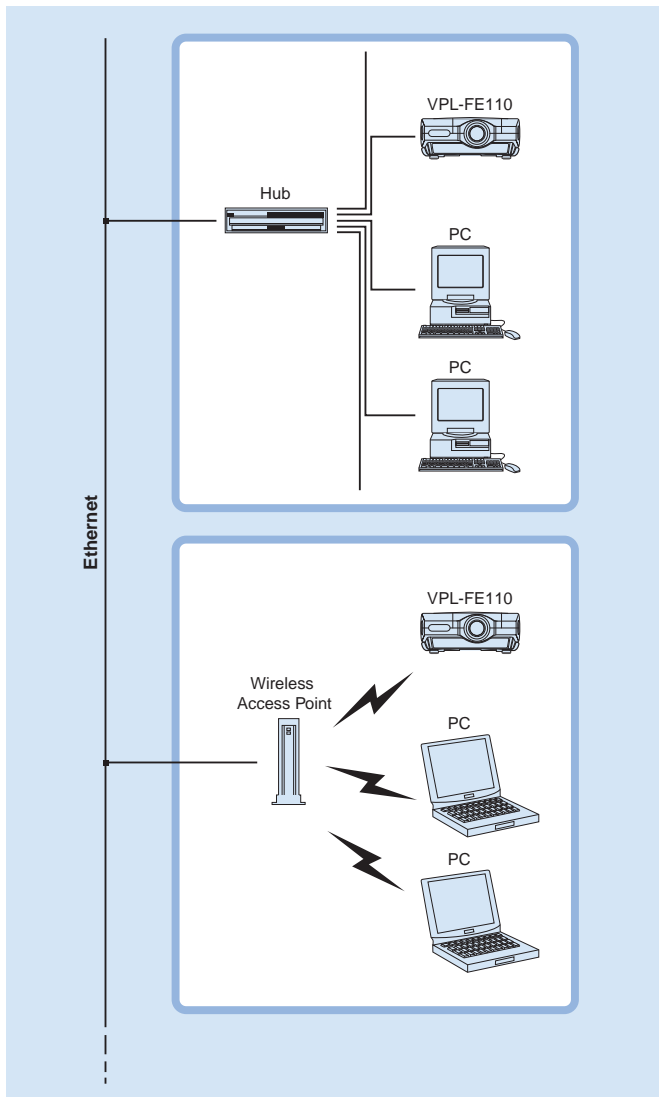
PROJECTOR CONTROL VIA WEB BROWSER

Any PC within the same LAN can communicate with the VPL-FE110, through the web browser*. Operating your presentation (preparing and running slide shows), controlling the projector's ON/STANDBY or its picture control, or organizing the presentation files can all be done with a PC connected to the LAN. You have full access without any need to install additional software.

* System requirements

OS: Microsoft Windows® 98, Windows 98 SE or Windows 2000

Web Browser: Internet Explorer 4.0 or later or Netscape® Communicator 4.0 or later

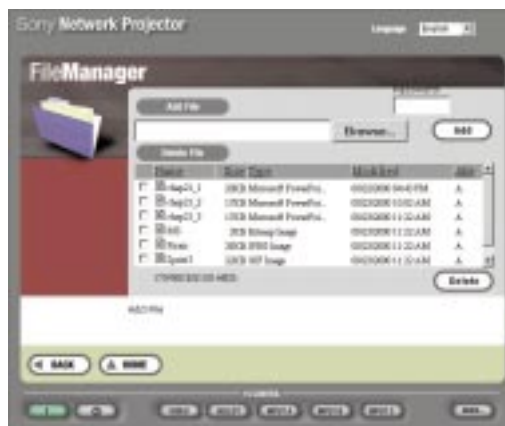


System Configuration

Note: When using the networking function, the VPL-FE110 cannot be controlled via RS-232C/422A.



Presentation Viewer



File Manager

MEMORY STORAGE

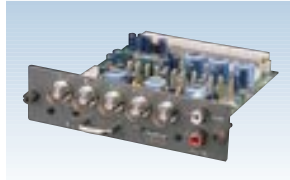
The VPL-FE110 has a memory storage, which makes it possible for you to save your presentation files in the projector. You can save the presentations prior to an event show, and then project it continuously – all you will need at the site is the VPL-FE110.

OPTIONAL ACCESSORIES



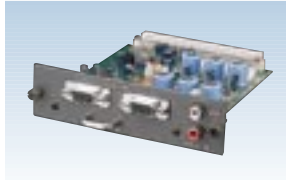
PC-3000

Signal Interface Switcher
 • Provides eight slots for optional interface boards and one fixed output with 150 MHz cable compensation.



IFB-12A

Interface Board
 • 5 BNC input/output
 • Accepts analog RGB, component (Y/R-Y/B-Y), HDTV (Y/Pb/Pr, GBR), composite video and Y/C signals



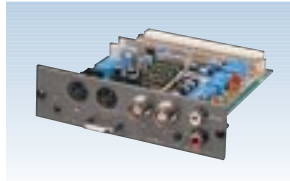
IFB-21

Interface Board
 • Analog RGB input, with loop-through output (HD D-sub 15-pin)



IFB-50

Interface Board
 • Component SDI BNC input/output
 • Serial Digital Interface board for SMPTE 259 M-C/ ITU-R BT656-3 4:2:2 video signals



IFB-1000

Interface Board
 • Composite/Y/C video input (Loop-through BNC/Loop-through Mini DIN 4-pin)



SIC-10

Interface Cable
 • BNC x5 to BNC x5
 • Length: overall 10 m (32.8 ft)

RCC-5G/10G/30G

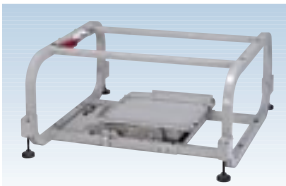
Interface Cable
 • D-sub 9-pin to D-sub 9-pin
 • Remote cable for RS-422A
 • Length: 5, 10, and 30 m

SMF-400

Interface Cable
 • HD D-sub 15-pin to BNC x5
 • Length: overall 2 m (6.6 ft)

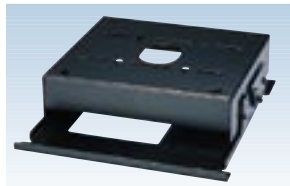
SMF-410

Interface Cable
 • HD D-sub 15-pin to HD D-sub 15-pin
 • Length: overall 2 m (6.6 ft)



SU-PJ2000

Projector Stand
 (for twin and triple stacking)



PSS-2000

Suspension Support



PSS-10

Suspension Support



VPS-100FH

100-inch Flat Screen*

VPS-120FH

120-inch Flat Screen*

*viewable area, measured diagonally

HDTV and DTV Signal Chart

System	Scanning Rate (kHz)	Frame Rate (Hz)*	Scanning Format	Aspect	Standard
1035/60I	33.75	30	2:1 Interlace	16:9	BTA S-001B
1080/60I	33.75	30	2:1 Interlace	16:9	SMPTE 274M/BTA S-001B
480/60P	31.5	60	Progressive	16:9/4:3	SMPTE 293M
1080/24PsF	27	24	2:1 Interlace	16:9	—
1080/50I	28.13	25	2:1 Interlace	16:9	SMPTE 274M
720/60P	45	60	Progressive	16:9	SMPTE 296M
720/50P	37.5	60	Progressive	16:9	—

*Each of the above frame rates is also compatible with 1/1.001.

VPL-FE110

INPUT SIGNAL PRESET DATA

Memory No.		Preset Signal	fH (kHz)	fV (kHz)
1	VIDEO	60 Hz	15.734	59.940
2		50 Hz	15.625	50.000
3	15 kHz RGB	480/60I	15.734	59.940
4		575/50I	15.625	50.000
5	HDTV/DTV	1035/60I, 1080/60I	33.750	60.000
6	640x350	VGA-1 (VGA350)	31.469	70.086
7		VESA 85 (VGA350)	37.861	85.080
8	640x400	NEC PC98	24.823	56.416
9		VGA-2 (TEXT)/VESA70	31.469	70.086
10	640x400	VESA 85 (VGA400)	37.861	85.080
11		VESA 60	31.469	59.940
12	640x480	Mac 13	35.000	66.667
13		VESA 72	37.861	72.809
14	640x480	VESA 75 (IBM M3)	37.500	75.000
15		VESA 85 (IBM M4)	43.269	85.008
16	800x600	VESA 56	35.156	56.250
17		VESA 60	37.879	60.317
18	800x600	VESA 72	48.077	72.188
19		VESA 75 (IBM M5)	46.875	75.000
20	800x600	VESA 85	53.674	85.061
21		832x624	Mac 16	49.724
22	1024x768	VESA 43 (8514)	35.524	43.479
23		VESA 60	48.363	60.004
24	1024x768	VESA 70	56.476	69.955
25		VESA 75	60.023	75.029
26	1024x768	VESA 85	68.677	84.997
27		1152x864	VESA 70	63.995
28	1152x864	VESA 75	67.500	75.000
29		VESA 85	77.487	85.057
30	1152x900	SUN LO	61.795	65.960
31		SUN HI	71.713	76.047
32	1280x960	VESA 60	60.000	60.000
33		VESA 75	75.000	75.000
34	1280x1024	VESA 43	46.433	43.436
35		SGI-5	53.316	50.062
36	1280x1024	VESA 60	63.974	60.013
37		SXGA VESA 75	79.976	75.025
38	1280x1024	SXGA VESA 85	91.146	85.024
39		1600x1200	UXGA VESA 60	75.000
40	1600x1200	UXGA VESA 65	81.913	65.530
41		UXGA VESA 75	93.750	75.000
43	P. Component	480/60P (Progressive)	31.470	60.000
44		575/50P (Progressive)	31.250	50.000
45	HDTV/DTV	1080/50I	28.130	50.000
47		720/60P	45.000	60.000
48		720/50P	37.500	50.000
49		1080/24PsF	27.000	48.000

VPL-FE110U/FE110M

SPECIFICATIONS

OPTICAL	
Projection system:	3 LCD panels, 1 lens projection
LCD panel:	1.8-inch TFT LCD panel, 3,932,160 pixels (1,310,720 pixels x3), with Micro Lens Array
Lamp:	120 W UHP lamp (x4)
Light output:	4000 ANSI lumens*1 (typical)
Projection picture size:	40 to 500 inches (viewable area, measured diagonally)
GENERAL	
Color system:	NTSC/PAL/SECAM/NTSC4.43/PAL-M (automatically selected)
Resolution:	Video: 600 TV lines RGB: 1280 x 1024 pixels
Scanning frequency:	fH: 15 kHz - 100 kHz fV: 40 Hz - 120 Hz Display area: >6.4 μsec
Speaker:	5 W mono
Power requirements:	VPL-FE110U: AC 100 to 120 V/220 to 240 V, 50/60 Hz (UL listed for AC 120 V operation only) VPL-FE110M: AC 220 to 240 V, 50/60 Hz
Power consumption:	VPL-FE110U: 830 W (Max.), 6.8 W (Standby) VPL-FE110M: 830 W (Max.), 12 W (Standby)
Heat dissipation:	2833 BTU
Dimensions:	562 (W) x 237 (H) x 649 (D) mm (22 1/4 x 9 3/8 x 25 5/8 inches)
Mass:	Approx. 34.5 kg (75 lb 14 oz)
Operating temperature:	0 to 40°C (32 to 104°F)
Operating humidity:	35 to 85% (no condensation)
Storage temperature:	-20 to 60°C (-4 to 140°F)
Storage humidity:	10 to 90%
INPUTS/OUTPUTS	
VIDEO IN	Composite video: Loop-through BNC 1.0 Vp-p ± 2 dB sync negative, 75 Ω
S VIDEO IN	Y IN: BNC 1.0 Vp-p ± 2 dB sync negative, 75 Ω C IN: BNC Burst 0.286 Vp-p ± 2 dB (NTSC), 75 Ω or 0.3 Vp-p ± 2 dB (PAL), 75 Ω
Y/C IN:	Loop-through Mini DIN 4-pin Y (luminance): 1.0 Vp-p ± 2 dB sync negative, 75 Ω C (chrominance): Burst 0.286 Vp-p ± 2 dB (NTSC), 75 Ω or 0.3 Vp-p ± 2 dB (PAL), 75 Ω
AUDIO IN:	Phono, stereo, 500 mV rms, impedance more than 47 kΩ
INPUT A	Analog RGB/Component: BNC x 5 R/R-Y: 0.7 Vp-p ± 2 dB positive, 75 Ω G: 0.7 Vp-p ± 2 dB positive, 75 Ω G with sync/Y: 1.0 Vp-p ± 2 dB sync negative, 75 Ω B/B-Y: 0.7 Vp-p ± 2 dB positive, 75 Ω
SYNC/HD	Composite sync: 0.6 - 8.0 Vp-p high impedance, sync positive/negative Horizontal sync: 0.6 - 8.0 Vp-p high impedance, sync positive/negative
VD	Vertical sync: 0.6 - 8.0 Vp-p high impedance, sync positive/negative
HDTV (Y/Pa/Ps):	BNC Y: 1.0 Vp-p ± 2 dB positive, 75 Ω Tri-level sync: ±0.3 Vp-p Bi-level sync: 0.3 Vp-p ±0.35 Vp-p ± 2 dB positive, 75 Ω
Pa/Ps:	±0.35 Vp-p ± 2 dB positive, 75 Ω
HDTV (GBR):	BNC G with sync: 1.0 Vp-p ± 2 dB, 75 Ω Tri-level sync: ±0.3 Vp-p Bi-level sync: 0.3 Vp-p 0.7 Vp-p ± 2 dB positive, 75 Ω
B/R:	0.7 Vp-p ± 2 dB positive, 75 Ω
AUDIO IN:	Phono, stereo, 500 mV rms, impedance more than 47 kΩ
AUDIO OUT:	Phono, Max. 1 V rms when input is 500 mV rms, impedance more than 1 kΩ

INPUT B:	Open for optional IFB board
INPUT C:	PC Card slot (Type II) x 1
CONTROL S IN/ PLUG IN POWER:	Stereo mini jack 5.0 Vp-p, Plug in power DC 5 V maximum output 60 mA
CONTROL S OUT:	Stereo mini jack 5.0 Vp-p
REMOTE RS-232C/ RS-422A*2: PJ COM*3:	D-sub 9-pin (female) D-sub 9-pin x2 (female)
TRIG:	Mini jack Power ON: 12 V, output impedance 4.7 kΩ Power OFF: 0 V

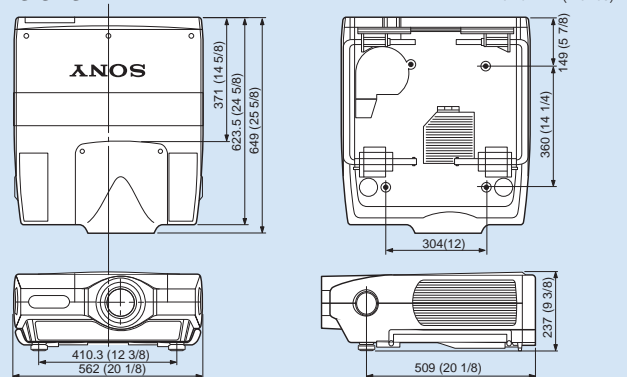
SAFETY REGULATIONS

VPL-FE110U: UL1950, cUL1950, FCC Class A, IC Class A
VPL-FE110M: EN 60 950 (Nemko), CE, C-tick, CCIB

ACCESSORIES

SUPPLIED ACCESSORIES:	Remote Commander RM-PJ1001 Remote Commander Cable (15 m) Size AA (R6) Battery (x3) AC Power Cord PJ COM Termination Lens Ring Operation Manual Noise Prevention Core Warranty Booklet
OPTIONAL ACCESSORIES:	Projector Quad Lamp (for replacement) LMP-Q130 Projector Individual Lamp LMP-S120 1.3 times zoom Standard Focus Lens VPLL-Z3020 1.3 times zoom Standard Focus Lens VPLL-Z2019 1.6 times zoom Long Focus Lens VPLL-Z2025 1.5 times zoom Long Focus Lens VPLL-Z2039 Fixed Long Focus Lens VPLL-3050 Fixed Long Focus Lens VPLL-2075 Fixed Short Focus Lens VPLL-2014 Fixed Short Focus Lens VPLL-2009 Stack Stand (for twin and triple stacking) SU-PJ2000 Suspension Support PSS-2000 Suspension Support PSS-10 Signal Adaptor Macintosh*→VGA ADP-20 D-sub HD 15-pin→5 BNC Cable SMF-400 D-sub HD 15-pin→D-sub HD 15-pin SMF-410 Interface Board IFB-12A/21/50/1000 Signal Interface Cable SIC-10 Signal Interface Switcher PC-3000 9-pin Remote Cable RCC-5G/10G/30G (for RS-422A) Remote Commander RM-PJM610*4 Remote Commander RM-PJ3000*4 Remote Control Receiver RM-PJ10 100-inch Flat Screen VPS-100FH*5 120-inch Flat Screen VPS-120FH*5

DIMENSIONS



*1 ANSI lumens is a measuring method of the American National Standards Institute ANSI IT7.228.

*2 RS-232C/RS-422A selectable.

*3 PJ COM complies with RS-485.

*4 Laser Type: Class II
Wavelength: 645 nm
Output: 1 mW

*5 Not available in some areas. For details, please contact your nearest Sony office.

©2000 Sony Corporation. All rights reserved.

Reproduction in whole or in part without written permission is prohibited.

Features and specifications are subject to change without notice.

All non-metric weights and measures are approximate.

Sony is a registered trademark of Sony Corporation.

Digital Reality Creation and DRC are trademarks of Sony Corporation.

Microsoft, PowerPoint and Windows are registered trademarks of Microsoft Corporation.

Netscape is a registered trademark of Netscape Communications Corporation.

Macintosh is a registered trademark of Apple Computer, Inc.

All other trademarks are the property of their respective owners.

Distributed by

ProSelecta

View :: Compare :: Select - www.ProSelecta.com