

Specifications

| Model | | iP-01UE | iP-01BE |
|---|------------------------|--|--|
| Type | | 1chip DLP color®wheel color separation method | |
| Panel | Size | 0.55 inches®DLP Panel, Aspect Ratio 4:3 | |
| | Number of Pixels | 786,432 pixels (1,024 × 768 dots) | |
| Projection Lens | | Manual Zoom : 1 to 1.2x | |
| Optical Source | | 260W Super High-pressure Mercury Lamp | |
| Screen Size | | 33 to 300 inches diagonal | |
| Projection Distance | | 0.7 to 6.1 m (approx. 26.4 in to 20 ft) | |
| Color Reproducibility | | Full color (16,770,000 colors) | |
| Brightness | | 2,500 Limens | |
| Contrast Ratio | | 1,500:1 | |
| Scan Frequency | | Horizontal 24,8 to 91,1 kHz, Vertical 50 to 85 Hz | |
| Resolution (At RGB signal input) | | Native: 1,024X768 pixels (Maximum: Compressed display of 1,600 x 1,200 pixels is possible.) | |
| OHP Input/Output | Scanner / Camera | 3.15 Mega-pixels color CMOS camera | |
| | Total Number of Pixels | 2,048 x 1,536 pixels | |
| | Max Scanning Size | 288 mm x 216 mm (11.3 in x 8.5 in) | |
| | Reading Speed | 6 frames/second | |
| | Scanner Output | Exif JPEG (2,048 x 1,536 pixels) | None |
| Input terminal (image) | PC Input | 15 pin Mini SUB-D 1 ch (Component Video) | |
| | Video Input | RCA Pin Jack 1 ch, NTSC/PAL/SECAM/PAL-N/PAL-M/NTSC4.43 Compatible to D1, D2, D3 and D4 images *1 (Common to PC) | |
| Audio Input | common to PC/video | RCA Pin Jack (L,R) 1 ch | |
| Audio Output | | 5W Mono | |
| Memory Interface | | USB Memory Stick*2 (USB 2.0) | None |
| Keystone Correction | | Manual ±15° Vertical Only | |
| Operating Range of Temperature and Humidity | | Temperature: 0 to 35°C (32 to 95°F), Humidity: 20 to 80% (no condensation) | |
| Power Source (Switching Power Supply) | | 100-120/220-240V AC , 50/60 Hz | |
| Power Consumption | | 370W (100-120V AC), 370W (220-240V AC) | |
| Input Current | | 3.7A (100-120V AC), 1.7A (220-240V AC) | |
| External Dimensions | | 290 (W) x 405 (D) x 140 (H) mm / 11.4 (W) x 15.9 (D) x 5.5 (H) in (not including protrusions) | |
| Weight | | 5.0 kg (approx. 11.0 lbs.) | |
| Accessories | | Power Cord (3 m/3.3 yd), PC Connection Cable (2 m/2.2 yd, mini SUB-D 15 pins), USB Memory Stick (2 GB), Remote Control, User's Manual CD, Battery (Coin-type lithium battery: CR2025) | Power Cord (3 m/3.3 yd), PC Connection Cable (2 m/2.2 yd, mini SUB-D 15 pins), Remote Control, User's Manual CD, Battery (Coin-type lithium battery: CR2025) |
| Regulation | | Meets FCC Class A Requirements Meets EMC Directive (EN55022, EN55024, EN61000-3-2, EN61000-3-3) | |
| Lamp Kit | | IPLK-J1 | |

*1 D terminal/RGB conversion cable is required for input of D1~D4 images.
*2 Avio optional USB memory sticks are guaranteed to operate. Other USB memory devices may not operate. Initial formatting of the USB memory using FAT 32 is required.
Large numbers of recorded images may delay the speed of saving/playback.

RoHS Compliant

Accessories

Replacement Lamp

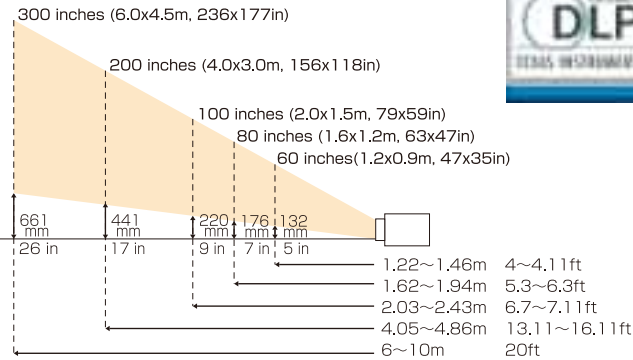
IPLK-J1



Cable

IPC-D/VGA D terminal / RGB conversion cable (2m / 2.2yd)

Throw Distance



CAUTION

- A high pressure lamp is used in this projector. On rare occasions, this lamp might burst leaving glass remnants in the projector. For this reason the unit is designed to stop operation and require a new lamp installation after a certain number of hours usage. Please exercise caution and follow the instructions in the users manual to install a new lamp.
- Lamps and other optical components have a limited operational lifetime. After long usage these parts may require repair and/or replacement.
- BrilliantColor and DLP are trademarks or registered trademarks of Texas Instruments.
- Microsoft, Encarta, MSN, and Windows are either registered trademarks or trademarks of Microsoft Corporation in the United States and/or other countries.
- Company names and commodity names are trade names or registered trade marks of each company.
- Specifications and designs are subject to change without prior notice in order to improve the product.

<http://www.avio.co.jp/english/>

NIPPON AVIONICS CO.,LTD.

Projector Sales Department

Gotanda kowa Bldg 1-5, Nishi-Gotanda 8-chome,
Shinagawa-ku, Tokyo 141-0031, Japan

Phone: 81-3-5436-0622 Fax: 81-3-5436-0639

ProSelecta

View :: Compare :: Select - www.ProSelecta.com

All-in-one projector
with built-in 3.15 mega-pixel
document camera & short throw lens

Intelligent Projector

NEW

iP-01UE iP-01BE



All-in-one: Not just an ordinary projector!



Objects projected

by the integrated
document camera
when placed on top

Project from a short distance
to a large screen

for Bussiness

for Education

iP-01UE Intelligent Projector

iP-01UE allows you to...

Built-in Document Camera

Just place an object on the glass and project a crisp, clear image on the screen. Easy to use no need to interface to a PC.

Push button power on



Place object to project



View on screen instantaneously



Short throw lens

Integrated short throw lens enables projection onto a large screen from a short distance. This allows for more effective presentations in small meeting rooms or classrooms where space is limited.

Of course the all-in-one iP-01UE will also project PC and video images

All standard PC and video formats can be projected to a large screen regardless of manufacturer or operating system. Furthermore, a 5W speaker is also built-in for listening to the associated audio.

At the office

The iP-01UE can be used in small meeting spaces with the short throw lens allowing projection on a large screen. It allows effective information sharing and speedier business operations since existing documents can be presented using the integrated document camera.



for Bussiness

Project to a large screen in a small meeting room

At school

The teacher does not need to change the layout of the classroom, just project to a large screen from the teacher's desk. Projecting material from textbooks, notebooks and print with the built-in document camera can make lessons more productive and interesting.



for Education

Project from the teacher's desk



iP-01UE Intelligent Projector

- Built-in 3.15 mega-pixel document camera
- Short throw lens
- 2,500 lumens
- USB Memory Port

Project onto a **60-inch diagonal screen from 1.2m(4ft) away**

SHORT THROW



Make a presentation without carrying a PC

Materials created on a computer can be stored on a USB memory device, plugged directly into the projector and presented. In reverse, images from the built-in document camera can be stored on a USB memory and carried back to the PC.



*For reproduction of PC data from USB memory, a special conversion software is required. (The conversion software can be downloaded from our website.)

iP-01BE Intelligent Projector

iP-01BE basic model with simple and easy operation

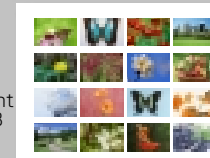
- Built-in 3.15 mega-pixel document camera
- Short throw lens
- 2,500 lumens



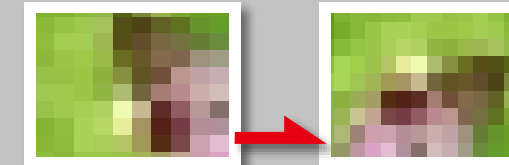
Easy to use, convenient and presenter friendly basic functions

- Store images to, and display images from, a USB memory stick

Images from the built-in document camera may be stored on a USB memory stick. (*USB memory(2GB) can store up to 2,000 images.) Stored images can be selected from the thumbnail screen for display again later or be transferred back to the PC for distribution and record keeping purposes.

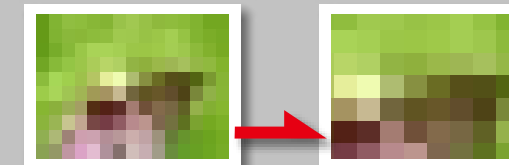


- Image rotation



When the integrated document camera is used, portrait documents can be rotated 90 degrees on the screen and automatically adjusted for optimal presentation.

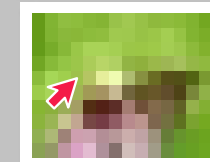
- Zoom and scroll



25 times zoom can be obtained when using the document camera and 4 times zoom for the PC and video modes. Zoomed in images can be scrolled to the primary areas of interest.

- On Screen Pointer

A pointer can be displayed on the projected image. Multiple types of pointers can be selected.



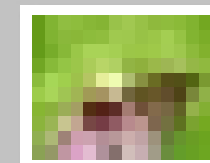
- Image "blank-out"



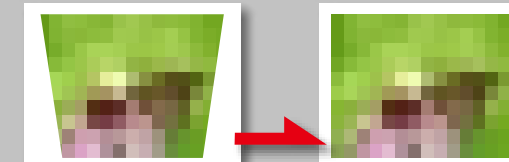
Projection can be temporarily turned off without powering off the lamp.

- Still image

PC and video images can be frozen.



- Keystone correction



Trapezoidal deformation of the projected image due to projection angle can be corrected. (Vertically $\pm 15^\circ$)

- Eco mode

By using the Eco mode, the life of the lamp can be doubled and power consumption reduced.

- Blackboard function

Projection onto a blackboard is optimized.

- Direct power off

No need to wait several minutes for cool down, start packing up the equipment immediately after concluding the meeting or presentation.