

# *Digital Cinema Projector*

---

Operating Instructions Page 16

GB



**SRX-R220**  
**SRX-R210**

**WARNING**

**To reduce the risk of fire or electric shock, do not expose this apparatus to rain or moisture.**

**To avoid electrical shock, do not open the cabinet. Refer servicing to qualified personnel only.**

**WARNING**

**THIS APPARATUS MUST BE EARTHED.**

**WARNING: THIS WARNING IS APPLICABLE FOR USA ONLY.**

If used in USA, use the UL LISTED power cord specified below.

**DO NOT USE ANY OTHER POWER CORD.**

Plug Cap	Parallel blade with ground pin (NEMA 5-15P Configuration)
Cord Length	Type SJT, three minimum 16 AWG wires Minimum 1.5m (4 ft .11in.), Less than 2.5 m (8 ft .3 in.)
Rating	Minimum 13A, 125V

Using this unit at a voltage other than 120V may require the use of a different line cord or attachment plug, or both. To reduce the risk of fire or electric shock, refer servicing to qualified service personnel.

**WARNING: THIS WARNING IS APPLICABLE FOR OTHER COUNTRIES.**

1. Use the approved Power Cord (3-core mains lead) / Appliance Connector / Plug with earthing-contacts that conforms to the safety regulations of each country if applicable.
2. Use the Power Cord (3-core mains lead) / Appliance Connector / Plug conforming to the proper ratings (Voltage, Ampere).

If you have questions on the use of the above Power Cord / Appliance Connector / Plug, please consult a qualified service personnel.

**For the customers in the U.S.A.**

This equipment has been tested and found to comply with the limits for a Class A digital device, pursuant to Part 15 of the FCC Rules. These limits are designed to provide reasonable protection against harmful interference when the equipment is operated in a commercial environment. This equipment generates, uses, and can radiate radio frequency energy and, if not installed and used in accordance with the instruction manual, may cause

harmful interference to radio communications. Operation of this equipment in a residential area is likely to cause harmful interference in which case the user will be required to correct the interference at his own expense.

You are cautioned that any changes or modifications not expressly approved in this manual could void your authority to operate this equipment.

All interface cables used to connect peripherals must be shielded in order to comply with the limits for a digital device pursuant to Subpart B of Part 15 of FCC Rules.

**For the customers in Europe, Australia and New Zealand****WARNING**

This is a Class A product. In a domestic environment, this product may cause radio interference in which case the user may be required to take adequate measures.

**For the customers in Europe**

The manufacturer of this product is Sony Corporation, 1-7-1 Konan, Minato-ku, Tokyo, Japan.

The Authorized Representative for EMC and product safety is Sony Deutschland GmbH, Hedelfinger Strasse 61, 70327 Stuttgart, Germany. For any service or guarantee matters please refer to the addresses given in separate service or guarantee documents.

This apparatus shall not be used in the residential area.

**For kundene i Norge**

Dette utstyret kan kobles til et IT-strømfordelingssystem.

**For the State of California, USA only**

Perchlorate Material - special handling may apply, See [www.dtsc.ca.gov/hazardouswaste/perchlorate](http://www.dtsc.ca.gov/hazardouswaste/perchlorate)  
Perchlorate Material : Lithium battery contains perchlorate.

**For the customers in Taiwan only**

廢電池請回收

**AVERTISSEMENT**

**Afin de réduire les risques d'incendie ou d'électrocution, ne pas exposer cet appareil à la pluie ou à l'humidité.**

**Afin d'écarter tout risque d'électrocution, garder le coffret fermé. Ne confier**

**l'entretien de l'appareil qu'à un personnel qualifié.**

## **AVERTISSEMENT**

**CET APPAREIL DOIT ÊTRE RELIÉ À LA TERRE.**

### **AVERTISSEMENT**

1. Utilisez un cordon d'alimentation (câble secteur à 3 fils)/fiche femelle/fiche mâle avec des contacts de mise à la terre conformes à la réglementation de sécurité locale applicable.
2. Utilisez un cordon d'alimentation (câble secteur à 3 fils)/fiche femelle/fiche mâle avec des caractéristiques nominales (tension, ampérage) appropriées.

Pour toute question sur l'utilisation du cordon d'alimentation/fiche femelle/fiche mâle ci-dessus, consultez un technicien du service après-vente qualifié.

**Pour les utilisateurs en Europe, Australie et Nouvelle-Zélande**

### **AVERTISSEMENT**

Il s'agit d'un produit de Classe A. Dans un environnement domestique, cet appareil peut provoquer des interférences radio, dans ce cas l'utilisateur peut être amené à prendre des mesures appropriées.

#### **Pour les clients en Europe**

Le fabricant de ce produit est Sony Corporation, 1-7-1 Konan, Minato-ku, Tokyo, Japon.

Le représentant autorisé pour EMC et la sécurité des produits est Sony Deutschland GmbH, Hedelfinger Strasse 61, 70327 Stuttgart, Allemagne. Pour toute question concernant le service ou la garantie, veuillez consulter les adresses indiquées dans les documents de service ou de garantie séparés.

Ne pas utiliser cet appareil dans une zone résidentielle.

## **WARNUNG**

**Um die Gefahr von Bränden oder elektrischen Schlägen zu verringern, darf dieses Gerät nicht Regen oder Feuchtigkeit ausgesetzt werden.**

**Um einen elektrischen Schlag zu vermeiden, darf das Gehäuse nicht geöffnet werden. Überlassen Sie**

**Wartungsarbeiten stets nur qualifiziertem Fachpersonal.**

## **WARNUNG**

**DIESES GERÄT MUSS GEERDET WERDEN.**

### **WARNUNG**

1. Verwenden Sie ein geprüftes Netzkabel (3-adriges Stromkabel)/einen geprüften Geräteanschluss/einen geprüften Stecker mit Schutzkontakten entsprechend den Sicherheitsvorschriften, die im betreffenden Land gelten.
2. Verwenden Sie ein Netzkabel (3-adriges Stromkabel)/einen Geräteanschluss/einen Stecker mit den geeigneten Anschlusswerten (Volt, Ampere).

Wenn Sie Fragen zur Verwendung von Netzkabel/ Geräteanschluss/Stecker haben, wenden Sie sich bitte an qualifiziertes Kundendienstpersonal.

**Für Kunden in Europa, Australien und Neuseeland**

### **WARNUNG**

Dies ist eine Einrichtung, welche die Funk-Entstörung nach Klasse A besitzt. Diese Einrichtung kann im Wohnbereich Funkstörungen verursachen; in diesem Fall kann vom Betreiber verlangt werden, angemessene Maßnahmen durchzuführen und dafür aufzukommen.

#### **Für Kunden in Europa**

Der Hersteller dieses Produkts ist Sony Corporation, 1-7-1 Konan, Minato-ku, Tokyo, Japan.

Der autorisierte Repräsentant für EMV und Produktsicherheit ist Sony Deutschland GmbH, Hedelfinger Strasse 61, 70327 Stuttgart, Deutschland. Bei jeglichen Angelegenheiten in Bezug auf Kundendienst oder Garantie wenden Sie sich bitte an die in den separaten Kundendienst- oder Garantiedokumenten aufgeführten Anschriften.

Dieser Apparat darf nicht im Wohnbereich verwendet werden.

---

# Table of Contents

<b>Precautions</b> .....	<b>19</b>
<b>Features</b> .....	<b>19</b>
<b>Location and Function of Controls</b> .....	<b>20</b>
<b>Messages</b> .....	<b>22</b>
Error Messages .....	22
Information Messages.....	24
<b>Maintenance</b> .....	<b>26</b>
<b>Specifications</b> .....	<b>26</b>

---

## Precautions

### On safety

- Operate the unit on the specified voltage. (See “Specifications” on page 26.)
- Should any liquid or solid object fall into the cabinet, turn off the unit and have it checked by Qualified Sony Service Personnel before operating it further.
- Turn off both the MAIN and LAMP switches if it is not to be used for several days.
- The unit is not disconnected from the AC power source (mains) as long as it is connected to the distribution board and the main power switch is turned on.
- Do not place your hand or objects near the ventilation holes. The air coming out is hot.
- Have at least two people carry and handle the unit, to avoid accidents or injury.
- Do not catch your finger between the unit and surface of the floor when moving the unit installed on the floor.
- Be careful not to catch your finger in the cooling fan.
- Since an intense light has come out of this projector from the front, do not stand on the front of a projector for a long time.

### On cleaning

- To keep the cabinet looking new, periodically clean it with a soft cloth. Stubborn stains may be removed with a cloth lightly dampened with a mild detergent solution. Never use strong solvents, such as thinner, benzene, or abrasive cleansers, since these will damage the cabinet.
- Avoid touching the lens. To remove dust on the lens, use a soft dry cloth. Do not use a damp cloth, detergent solution, or thinner.

### On repacking

Save the original shipping carton and packing material; they will come in handy if you ever have to ship your unit. For maximum protection, repack your unit as it was originally packed at the factory.

### On “stuck” pixels on a LCD screen

The LCD panel fitted to this unit is manufactured with high precision technology. Thus a very small proportion of pixels may be “stuck”, either always off (black), always on (red, green, or blue), or flashing. In addition, over a long period of use, because of the physical characteristics of the liquid crystal display, such “stuck” pixels may appear spontaneously. These problems are not a malfunction.

---

## Features

*For details on the settings described below, refer to the Installation Manual (not supplied).*

### High brightness, high resolution

The SRX-R220/R210 highest brightness digital cinema projectors, incorporating Sony’s unique three SXRD™ (Silicon X-tal Reflective Display) panels, achieve high resolution of the 4K digital cinema standards (horizontal 4096 × vertical 2160 pixels) specified by DCI (Digital Cinema Initiatives, LLC). A high resolution of 8,850,000 pixels corresponds to four times that of an HDTV image (horizontal 1920 × vertical 1080 pixels) and meets the resolution level of 65 mm films.

The SRX-R220 can use a 4.2 kW, 3.0 kW or 2.0 kW xenon short-arc lamp and provides light output of 14 foot-lamberts, as recommended by SMPTE for a 20-meter-wide screen, when a 4.2 kW xenon short-arc lamp is incorporated.

The SRX-R210 can use a 3.0 kW or 2.0 kW xenon short-arc lamp and provides light output of 14 foot-lamberts, as recommended by SMPTE for a 17-meter-wide screen (3.0 kW lamp) and a 14-meter-wide screen (2.0 kW lamp).

### High contrast

The adoption of SXRD panels and optimization of optical devices provide a high contrast ratio of more than 2000:1.

### Gamma correction circuit

The optimum gamma correction mode can be selected according to the input signal source from among “1.8,” “2.2” and “2.6,” allowing projection of an image with optimum brightness.

### Color space feature

The projector supports the change of color gamut according to an input signal. This feature allows you to select an optimum color space that suits an image source from among “DCDM,” “ITU Rec709” and “XYZ,” providing precise color reproduction.

### DCI-compliant secure projector housing

The projector housing is designed to comply with the SPB-2 security standards for digital cinema contents specified by Digital Cinema Initiatives (DCI).

## Fully integrated structure—All-in-One Projector

The projector has the 12RU 19-inch rack built into the pedestal, enabling all necessary equipment for digital cinema exhibition, such as the LMT-100 Media Block. This integrated structure simplifies the wiring and realizes an all-in-one projector. The security of the contents is strictly protected as all relevant devices are stored in a DCI-compliant secure projector housing.

### Optional lenses

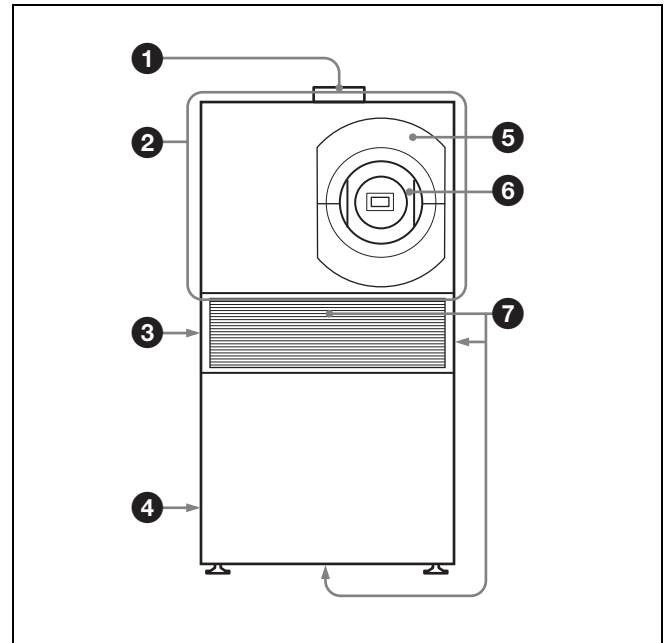
A variety of optional lenses are available depending on the projection distances. The LKRL-Z111C, LKRL-Z114C, LKRL-Z116C, LKRL-Z117, LKRL-Z119 and LKRL-Z122 zoom lenses incorporate the zoom positioning sensor, enabling you to register the various zoom positions in a memory. If you register the zoom positions for Cinema Scope and for Vista Vision, you can switch between them easily with a press of the button on the SRX controller or Touch Panel Controller. This feature reduces distortion of image surroundings, which is caused by a conventional projector with an anamorphic lens, to produce sharp images.

### Trademark

“CineAlta 4K” and its logomark are registered trademarks of Sony Corporation.

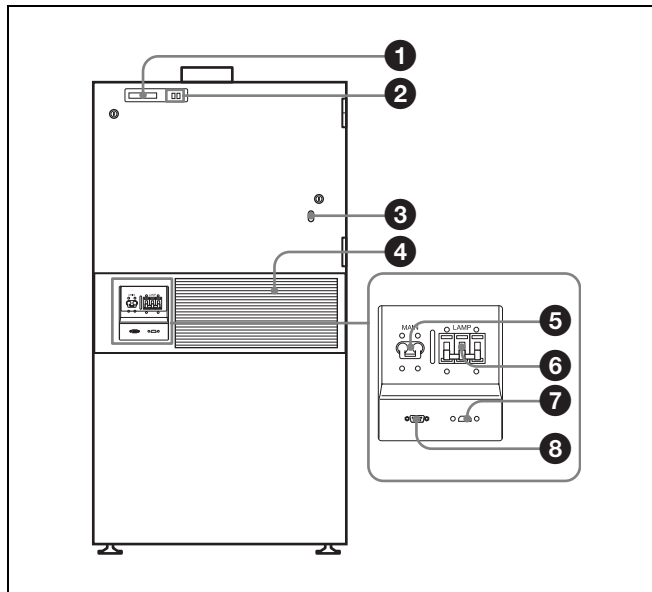
## Location and Function of Controls

### Front



- ❶ 8-inch duct attachment part**  
Install an 8-inch duct for exhaust.
- ❷ Projector head part**  
Image-processing circuit and optical unit are built in.
- ❸ Ventilation hole (exhaust) (left side)**
- ❹ Ventilation hole (exhaust) (left side)**
- ❺ Lens cover**
- ❻ Lens attachment part**  
Contact Qualified Sony Service Personnel for attachment of an optional lens.
- ❼ Ventilation holes (intake) (front/right side/bottom)**

## Rear



### 1 STATUS MESSAGE window

Displays various messages.

For details on the messages, see page 22.

### 2 Status indicators

Combinations of the MAIN and LAMP indicators indicate the status of the projector as follows:

MAIN indicator	LAMP indicator	Status of the projector
–	● (in red)	The LAMP switch is turned on and the unit is in standby mode.
● (in red)	–	The MAIN switch is turned on and the unit is in standby mode.
● (in red)	● (in red)	The unit is in standby mode. You can turn on the unit with the controller.
● (in green)	● (in green)	The unit is turned on with the controller. You can operate the unit with the controller.
☼ (in green)	☼ (in green)	The unit is in standby after shutting it down with the controller. Cooling fans are running.
● (in green)	☼ (in green)	The unit is in lamp-off mode.

●: Lights ☼ : Flashes –: Goes out

### 3 Lamp adjustment window

The lamp adjustment screw is inside this window. Fine adjustment of the lamp position is necessary after replacing the lamp.

For adjustment, contact Qualified Sony Service Personnel.

### 4 Ventilation holes (intake) (rear)

### 5 MAIN switch

Turns on/off the main switch.

#### To turn off the projector completely

The projector is ready to be turned off when the LAMP indicator flashes in green then lights in red steadily. You can then turn off the MAIN switch to turn off the projector completely.

You can turn on the projector in any order.

For more information, refer to the Installation Manual (not supplied).

### 6 LAMP switch

Turn on/off the lamp switch.

### 7 INGEST PORT connector

Connects a removable drive to ingest the digital cinema contents.

### Note

If you use this connector, you must make the necessary connections with this connector inside the projector housing referring to the Installation Manual when the projector is installed.

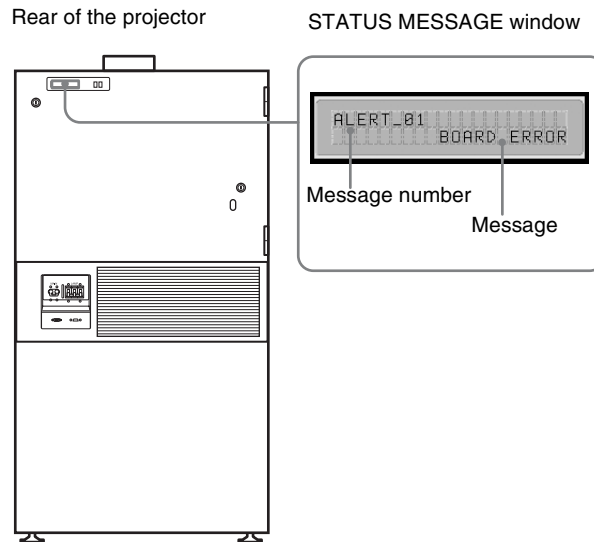
For details, refer to the Installation Manual (not supplied).

### 8 RS-232C connector

Connects the SRX controller. This is for service use.

# Messages

Various messages may be displayed in the STATUS MESSAGE window at the rear of the projector during operation.



Displayed messages are classified into “Error messages” and “Information messages.”

## Error Messages

Error messages are classified into three types, described below, depending on the danger level. If an error occurs, the message number and the message are displayed in the STATUS MESSAGE window.

### ALERT : Danger level - High

Message number: ALERT\_xx

### WARNING: Danger level - Middle

Message number: WARN\_xx

### FAILURE: Danger level - Low

Message number: FAIL\_xx

If an error message is displayed, contact Qualified Sony Service Personnel and give them the message and its number. The error messages to be displayed are listed below.

### ALERT : Danger level - High

Message number	Error message	Meaning
ALERT_01	BOARD ERROR	Trouble with power of IFA board
ALERT_02	BOARD ERROR	Trouble with power of IFB board
ALERT_03	BOARD ERROR	Trouble with power of IFC board
ALERT_04	BOARD ERROR	Trouble with power of IFD board
ALERT_05	BOARD ERROR	Trouble with power of MX board
ALERT_06	BOARD ERROR	Trouble with power of LPD board
ALERT_07	BOARD ERROR	Trouble with power of CT board



Message number	Error message	Meaning
ALERT_08	BOARD ERROR	Trouble with power of DST board
ALERT_09	BOARD ERROR	Trouble with power of PR1 board
ALERT_10	BOARD ERROR	Trouble with power of PR2 board
ALERT_11	BOARD ERROR	Trouble with power of SY board
ALERT_12	BOARD DETACHED	CN board disconnected
ALERT_13	BOARD DETACHED	MX board disconnected
ALERT_14	BOARD DETACHED	LPD board disconnected
ALERT_15	BOARD DETACHED	CT board disconnected
ALERT_16	BOARD DETACHED	DST board disconnected
ALERT_17	BOARD DETACHED	PR1 board disconnected
ALERT_18	BOARD DETACHED	PR2 board disconnected
ALERT_19	TEMPERATURE ERROR	Temperature of R panel is too high, and the unit stops operation.
ALERT_20	TEMPERATURE ERROR	Temperature of G panel is too high, and the unit stops operation.
ALERT_21	TEMPERATURE ERROR	Temperature of B panel is too high, and the unit stops operation.
ALERT_22	COVER DETACHED	Rear cover detached and/or internal mirror position changed
ALERT_25	TEMPERATURE ERROR	Temperature of lamp power is too high, and the unit stops operation.
ALERT_27	FAN ERROR	Abnormal in fan 2 for lamp
ALERT_28	FAN ERROR	Abnormal in fan 3 for lamp
ALERT_29	FAN ERROR	Abnormal in fan 4 for lamp
ALERT_30	FAN ERROR	Abnormal in fan 5 for lamp
ALERT_32	BALLAST ERROR	Temperature of lamp power is too high, and the unit stops operation.
ALERT_33	BALLAST ERROR	Abnormal in the fans for lamp power
ALERT_34	BALLAST ERROR	Abnormal in the lamp power
ALERT_35	LAMP ERROR	The lamp does not light, or goes out.
ALERT_36	BALLAST ERROR	Abnormal in the lamp power
ALERT_37	COVER DETACHED	Abnormal position of the lamp house cover
ALERT_38	BOARD ERROR	Trouble with power of CN board
ALERT_39	TEMPERATURE ERROR	Temperature of 8-inch duct attachment part is too high, and the unit stops operation.

**WARNING: Danger level – Middle**

Message number	Error message	Meaning
WARN_01	FAN ERROR	Abnormal in fan 1 for the main power
WARN_02	FAN ERROR	Abnormal in fan 2 for the main power
WARN_05	FAN ERROR	Abnormal in fan for board 1
WARN_06	FAN ERROR	Abnormal in fan for board 2
WARN_11	FAN ERROR	Abnormal in fan for PBS B
WARN_12	FAN ERROR	Abnormal in fan for peltier R
WARN_13	FAN ERROR	Abnormal in fan for peltier G
WARN_14	FAN ERROR	Abnormal in fan for peltier B
WARN_16	FAN ERROR	Abnormal in fan for optical unit 2
WARN_18	FAN ERROR	Abnormal in fan for the PSCon
WARN_19	COVER DETACHED	Air filter cover is open.
WARN_20	DEVICE ERROR	Failure of the peltier R control
WARN_21	DEVICE ERROR	Failure of the peltier G control

Message number	Error message	Meaning
WARN_22	DEVICE ERROR	Failure of the peltier B control
WARN_23	CONNECTOR DETACHED	The peltier R connector disconnected
WARN_24	CONNECTOR DETACHED	The peltier G connector disconnected
WARN_25	CONNECTOR DETACHED	The peltier B connector disconnected
WARN_26	DOUSER ERROR	Trouble with the douser operation
WARN_27	BALLAST ERROR	Failure of the ballast communication for the lamp power
WARN_28	BALLAST ERROR	Incorrect settings of the lamp S/N or the lamp power wattage

### FAILURE: Danger level – Low

Message number	Error message	Meaning
FAIL_01	TEMPERATURE ERROR	Temperature of the system area is too high.
FAIL_02	TEMPERATURE ERROR	Temperature of the projector head area is too high.
FAIL_03	TEMPERATURE ERROR	Temperature of the power area is too high.
FAIL_04	TEMPERATURE ERROR	Temperature of the intakes is too high.
FAIL_06	TEMPERATURE ERROR	Temperature of the optical unit area is too high.
FAIL_10	TEMPERATURE ERROR	Warning for abnormal temperature of Panel R
FAIL_11	TEMPERATURE ERROR	Warning for abnormal temperature of Panel G
FAIL_12	TEMPERATURE ERROR	Warning for abnormal temperature of Panel B
FAIL_13	TEMPERATURE ERROR	Warning for abnormal temperature of the lamp
FAIL_15	TEMPERATURE ERROR	Warning for abnormal temperature of the lamp power
FAIL_16	LENS ERROR	Failure of the zoom position adjustment to the registered setting
FAIL_17	LENS ERROR	Failure of the lens focus adjustment to the registered setting
FAIL_18	LENS ERROR	Trouble with the zoom position adjustment
FAIL_19	LENS ERROR	Trouble with the lens focus adjustment
FAIL_21	ADJUSTMENT ERROR	Abnormal in the Z-axis adjustment
FAIL_24	ADJUSTMENT ERROR	Failure of calibration for luminance deterioration
FAIL_25	DEVICE ERROR	Failure of FPGA configuration
FAIL_26	DEVICE ERROR	Trouble with the IIC circuit
FAIL_27	DEVICE ERROR	Trouble with the LVDS circuit
FAIL_28	DEVICE ERROR	Trouble with the PLL circuit
FAIL_29	DEVICE ERROR	Trouble with the PARITY circuit
FAIL_30	BALLAST ERROR	Lamp power interlocked
FAIL_34	ADJUSTMENT ERROR	Deviation of the Z-axis operation for + direction
FAIL_35	ADJUSTMENT ERROR	Deviation of the Z-axis operation for – direction
FAIL_36	DEVICE ERROR	Error of the DVI setting

## Information Messages

The message number is not displayed for information messages. Check the following if a message appears in the STATUS MESSAGE window.

Message	Meaning
DOUSER CLOSED	Douser is closed.
LAMP POWER + LIMIT	Lamp power was automatically adjusted by correcting luminance deterioration, but the picture is not brighter.

Message	Meaning
LAMP POWER – LIMIT	Lamp power was automatically adjusted by correcting luminance deterioration, but the picture is not darker.
LOW REAL TIME CLOCK BATTERY	The RTC battery (BT200) for the SY board should be replaced.
LUMI VALUE + LIMIT	Correction for luminance deterioration was made, but the picture is not brighter.
LUMI VALUE – LIMIT	Correction for luminance deterioration was made, but the picture is not darker.

---

# Maintenance

Some components of the projector are consumable parts over a long period of use.

To keep the projector working properly and to prolong its usable lifetime, have the projector inspected periodically.

We recommend you make a maintenance contract for periodical inspection with us. For details on the contract, consult with Qualified Sony Service Personnel.

---

# Specifications

## Optical characteristics

### Projection system

SXRD (Silicon X-tal Reflective Display)  
3 panel system

SXRD 8,847,360 (4096 (H) × 2160 (V)) pixels  
× 3

Lens Optional

Light output\* SRX-R220: 14 ft-L

For a screen max. 20 m wide using a  
4.2 kW lamp

For a screen max. 17 m wide using a  
3.0 kW lamp

For a screen max. 14 m wide using a  
2.0 kW lamp

SRX-R210: 14 ft-L

For a screen max. 17 m wide using a  
3.0 kW lamp

For a screen max. 14 m wide using a  
2.0 kW lamp

Lamp Optional

\* When the screen gain is 1.8

## Input/output

RS-232C For service use (to connect the SRX  
controller)

INGEST PORT

For service use (to ingest the contents)

## Input signal

DVI-D

The following signals are acceptable when the optional  
interface board is installed.

HD-SDI (4:4:4/4:2:2) (SMPTE-292M)

DC-SDI (4:4:4)

*For details on optional interface boards, contact Qualified  
Sony Service Personnel.*

## General

Dimensions 740 × 1535 × 1396 mm (29 <sup>1</sup>/<sub>4</sub> × 60 <sup>1</sup>/<sub>2</sub> ×  
55 inches) (w/h/d)

Mass Approx. 300 kg (661 lb 6 oz) (excluding  
the optional lamp and lens)

Power requirements

100 to 240 V AC, 50/60 Hz (single-phase  
main power)

200 to 208/380 to 415 V AC, 50/60 Hz  
(three-phase lamp power)

Current consumption

SRX-R220: 11 to 5 A (single-phase main power)  
21/11 A (three-phase lamp power)  
SRX-R210: 11 to 5 A (single-phase main power)  
13.5/7 A (three-phase lamp power)

Operating temperature

5°C to 35°C (41°F to 95°F)

Performance guarantee temperature

10°C to 30°C (50°F to 86°F)

Operating humidity

35% to 85% (no condensation)

Storage temperature

-20°C to +60°C (-4°F to +140°F)

Storage humidity

10% to 90%

Supplied accessories

- Fall prevention brackets (4)
- Keys for removing panels (10)
- Keys for lamp replacement panel/lamp position adjustment (2)
- Operating Instructions (2)
- Lens cover assembly (2)
- Lens attachment screws (M8) (4)
- AC cable clampers (2 for three-phase power, 3 for single-phase power)
- Plug holder (B) (retaining holder for AC cable) (1)
- FAN harness for the system area (1)
- Attachment screws for clampers +PSW 4 × 8 (5)
- Status indicator lamp (1)
- Harness for status indicator lamp (1)
- Attachment bracket for Touch Panel Controller (TPC) (1 set)
- Attachment screws for status indicator lamp and TPC attachment bracket +PSW 4 × 8 (2), +B 4 × 12 (4), +B 3 × 6 (2)
- Edge guard (1)

\* Projection ratio = Projection distance / Screen width

Projection lamp LKRX-2042A (for SRX-R220)

LKRX-2030A (for SRX-R220/R210)

LKRX-2020A (for SRX-R220/R210)

Media block LMT-100

LMT-200

Design and specifications are subject to change without notice.

**Note**

Always verify that the unit is operating properly before use. SONY WILL NOT BE LIABLE FOR DAMAGES OF ANY KIND INCLUDING, BUT NOT LIMITED TO, COMPENSATION OR REIMBURSEMENT ON ACCOUNT OF THE LOSS OF PRESENT OR PROSPECTIVE PROFITS DUE TO FAILURE OF THIS UNIT, EITHER DURING THE WARRANTY PERIOD OR AFTER EXPIRATION OF THE WARRANTY, OR FOR ANY OTHER REASON WHATSOEVER.

**Optional accessories**

Projection lens with zoom/focus memory function

Model name	Projection ratio*
LKRL-Z111C	1.07 to 1.71
LKRL-Z114C	1.35 to 1.98
LKRL-Z116C	1.50 to 2.29
LKRL-Z117	1.72 to 2.39
LKRL-Z119	1.81 to 2.94
LKRL-Z122	2.23 to 4.03

## For Customer in China

根据中华人民共和国信息产业部第39号令《电子信息产品污染控制管理办法》及标准中要求的“有毒有害物质或元素名称及含量”等信息，本产品相关信息请参考以下链接：  
<http://pro.sony.com.cn>

制造商：索尼公司  
原产地：日本  
总经销商：索尼（中国）有限公司  
进口商地址：北京市朝阳区东三环北路霞光里18号佳程大厦A座25层

出版日期：2008年11月

ソニー株式会社 〒108-0075 東京都港区港南1-7-1

<http://www.sony.net/>

Sony Corporation  
Printed in Japan



この説明書は、再生紙を使用しています。  
Printed on recycled paper.