

Canon

LV-SERIES PROJECTORS

2009 NEW PRODUCT FEATURE GUIDE



The ABCD of LCD

Aspect (ratio), Brightness, Color, Dependability

MULTIMEDIA

Meet the Needs of Your Clients with Canon

Canon's New Series of LCD Projectors

Canon's new LV-Series line of LCD projectors meet the needs of a wide range of fields requiring high brightness with superior image quality.

The new LV-Series projectors offer an array of easy-to-use features such as a carrying handle, Auto Vertical Keystone Correction, and Auto Power On.

The new LV-Series projectors makes installation ease with an easy to access lamp and network connectivity.

Closed captioning, an updated control panel, and easy to navigate on-screen menu makes the LV-Series the perfect solution for users in corporate or educational environments.



LV-8300

MULTIMEDIA PROJECTOR

(1200 x 800) WXGA Resolution
3000 Lumens
500:1 Contrast Ratio

LV-7375

MULTIMEDIA PROJECTOR

(1024 x 768) XGA Resolution
3500 Lumens
500:1 Contrast Ratio

LV-7370

MULTIMEDIA PROJECTOR

(1024 x 768) XGA Resolution
3000 Lumens
500:1 Contrast Ratio

All Projectors Feature:

- 1.2x Optical Zoom (Manual)
- Closed Captioning
- Auto-Keystone Correction
- Network Connectivity
- Screen Color Correction
- Color Management
- On-Screen Menu System (in 21 languages)
- Quiet Operation (29 dB)
- 7W Speaker
- 3 -Year Parts and Labor Limited Warranty / 120-Day Lamp Warranty



True Wide Screen Projection

WXGA and XGA Resolution

The LV-8300 WXGA resolution at a native aspect ratio of 16:10, offers a larger display range capable of projecting data produced on your wide screen laptop, just as it appears on your screen.

The LV-7375 and LV-7370 can also support WXGA resolution (compressed).

The LV-8300, LV-7375, and LV-7370 are perfect for displaying crisp video, diagrams, and text.

Wide Screen Projection



User Friendly Features

Ease of Use

A **carrying handle** has been integrated into the main unit, making transporting the projector easier than ever before.

The **lens cover** protects the entire area around the lens, preventing dust from penetrating into gaps of the zoom lever and focus ring.

The **manual 1.2x optical zoom lens**, faithfully projects crisp clear images while offering ease of placement for the user. Easily change the screen size to accommodate various venues and/or applications.

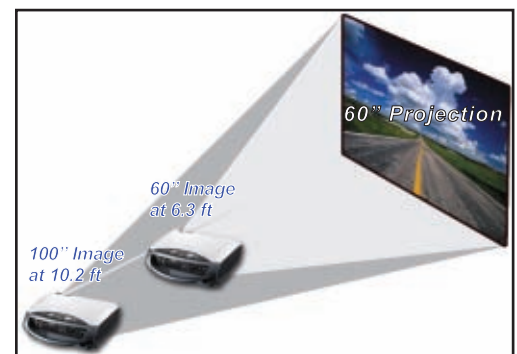
The **on screen menu system** is offered in 21 different languages. The guidance functions provide on-screen help for easy step-by-step operation.

Auto Vertical Keystone Correction: Simply place the projector on a flat surface; the built-in sensors detect the tilt of the projector in relation to the screen, automatically correcting vertical image distortion.

Portability

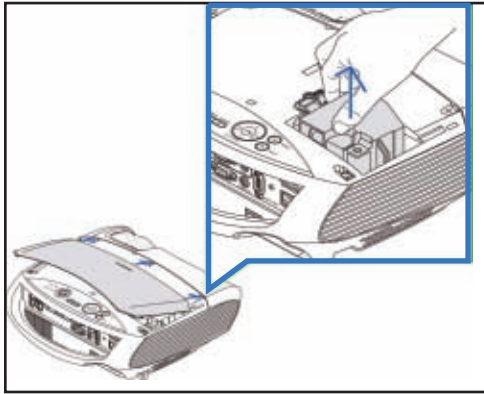


1.2x Optical Zoom (manual)

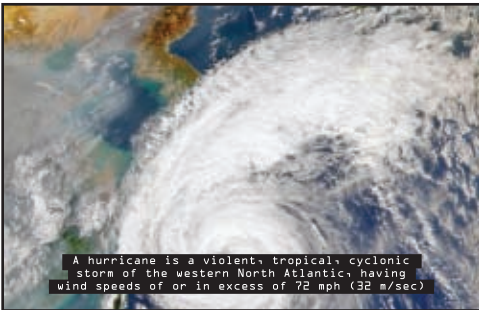


The LV-7375 and LV-7370 can project a 60-inch image from as close as 6.3 ft, or a 100-inch image from as close as 10.2 ft.

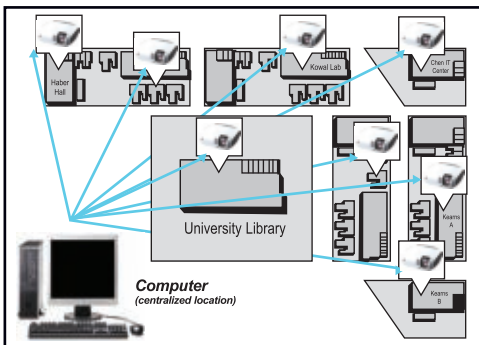
Easy Access Lamp



Closed Captioning



Local and Remote Monitoring



The RJ-45 network connection allows for local or remote monitoring of several projectors from one computer in a centralized location.

Projecting on a Whiteboard



Whiteboard Mode Off

Whiteboard Mode On

Ease of Installation

The **Auto Power On** feature will automatically turn on the projector when the power cord is plugged into an outlet, eliminating the need to press the power switch on the unit.

Computer Synchronization: When a computer is connected and an input signal is detected, the projector will automatically turn on and sync with the computer.

Lamp Replacement: The lamp can be replaced without having to remove the projector from its ceiling mount thanks to the lamp being installed on the top of the projector with an easy-to-open lamp cover.

In addition, a **replacement counter** will display a message indicating the time when the lamp and filters need to be replaced.



.... Closed Captioning

Benefits Educational and Corporate Environments

Closed-captioning decodes and displays closed-captioning information for added clarity during presentations. This new feature will benefit those in your audience with hearing impairments, making it easier for them to understand difficult dialog.

Take advantage of the **built-in 7W speaker**, perfect for audio to be heard clearly in small classrooms and conference rooms.



.... Projector Management

Local and Remote Monitoring

A **built-in RJ-45 network connection** allows for local and network control of several projectors from a centralized location, making it easy to manage a large scale system.

The **network connection** also enables the projector to send out an email alert when an error has occurred, or when the lamp has reached the end of its life.

The **RS-232 serial connection** allows for local control of a projector, beneficial for users using touch panel control systems.

The new line of LV-Series projectors support AMX device discovery.



.... Better Color Reproduction

Color Management

Instead of having just one master control, the projector's color management system offers individual adjustment for color levels and color balance (not available for RGB input), as well as brightness, contrast, and sharpness.

The **Screen Color Correction*** feature allows you to project directly onto a wall, correcting color distortion caused by the color of the projection surface. Choose from 8 different projection surface colors.

Whiteboard Mode dramatically reduces the reflective "hot spots" on a whiteboard, helping to maintain genuine color recreation.

*Screen color correction does not work on black walls.



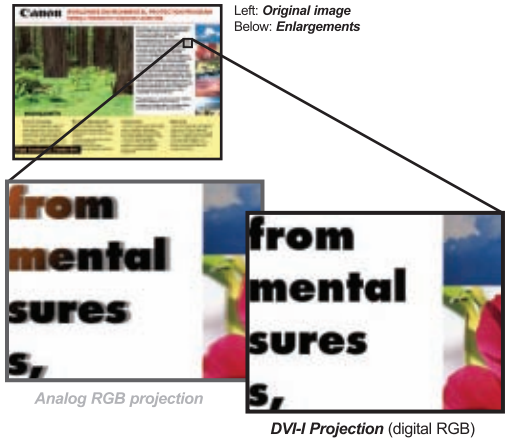
Digital Interface

DVI-I (HDCP Compliant) Interface

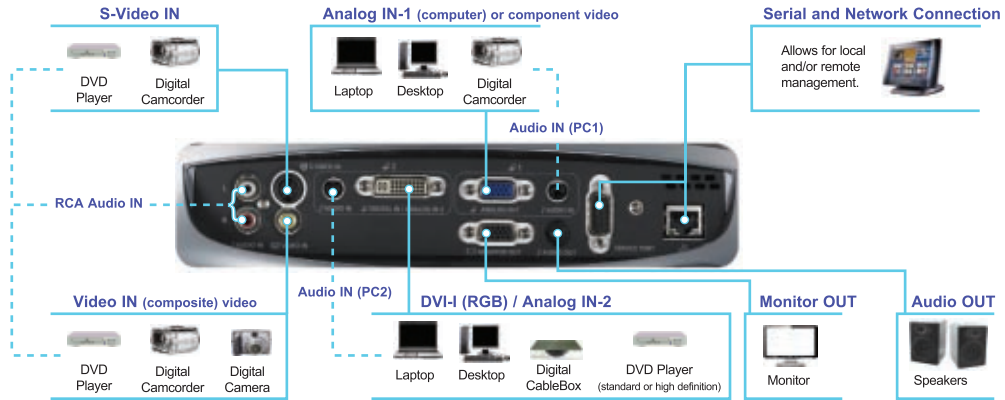
Canon's LV-Series projectors offer a DVI-I (HDCP compliant) interface. DVI-I interface provides an all-digital connection between the projector and an input source, projecting a clearer picture than an analog signal, with no flickering, blurred lines, ghost images, or color distortion with text display.

The DVI-I interface ensures a digital connection between HDCP compliant devices, such as many of today's cable boxes and Blu-Ray players. High definition 1080i and 720p video signals are fully supported.

Analog vs. Digital Projection



Terminals: Input / Outputs



Specifications and Optional Accessories

Specifications			
MODELS	LV-8300	LV-7375	LV-7370
ITEM CODE	3518B002	3519B002	3520B002
RESOLUTION	1280 X 800	1024 X 768	
BRIGHTNESS	3000 Lumens	3500 Lumens	3000 Lumens
CONTRAST	500:1		
ASPECT RATIO	16:10	4:3	
ZOOM	1.2x Optical Zoom (Manual)		
FOCUS	Manual		
SCREEN SIZE	21" - 300"		
KEystone CORRECTION	±30° Vertical (Auto / Manual)		
NOISE (Normal / Quiet)	35/29 dB		
INPUTS	DVI-I, VGA, Component, S-Video, Composite, RCA L/R (Audio), Stereo Mini-Jack (Audio), RJ-45, RS-232		
OUTPUTS	VGA, Stereo Mini-Jack (Audio)		
SPEAKER	7W Mono		
DIMENSIONS (W x H x D)	12.48" x 13.23" x 4.37"		
WEIGHT	7.28 lbs		
WARRANTY	3-Year Parts and Labor Limited Warranty / 120-Day Lamp Warranty		

Optional Accessories	
ITEM CODE	Description
7502A001	DVI-D Cable (LV-CA29)
9270A001	Component Cable (LV-CA32)
3523B001	Ceiling Mount (LV-CL15)
3522B003	Replacement Lamp (LV-LP31)

All images are simulated.

Specifications are subject to change without notice. Weight and dimensions are approximate. Canon and IMAGEANYWARE are registered trademarks of Canon Inc. in the United States and may also be a registered trademark in other countries. Microsoft and Windows are either registered trademarks or trademarks of the Microsoft Corporation in the United States and/or other countries. Other names and products not mentioned above may be registered trademarks or trademarks of their respective companies. Error and omissions expected. Projected images simulated.

Warning: Unauthorized recording of copyrighted materials may infringe on the rights of copyright owners and be contrary to copyright laws ©2009 Canon U.S.A., INC.

©2009 Canon U.S.A., INC. 0132W626 3/09 PRINTED IN U.S.A.

Canon
image*ANYWARE*

1-800-OK-CANON
www.usa.canon.com/projectors

Canon U.S.A., Inc.
One Canon Plaza
Lake Success, NY 11042
U.S.A.

Canon Canada, Inc.
6390 Dixie Road
Mississauga, Ontario L5T 1P7
Canada

www.usa.canon.com/projectors