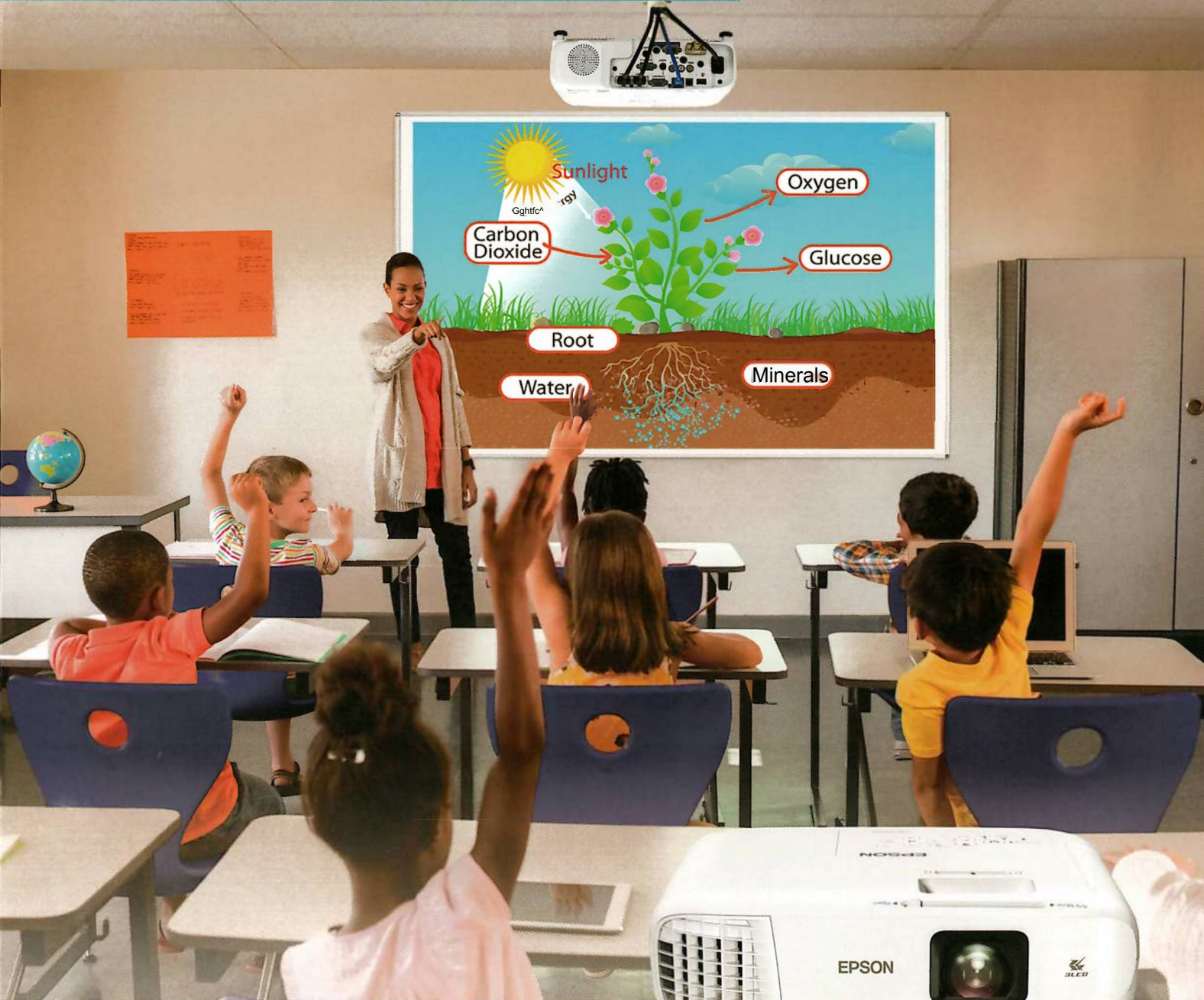


Multimedia Projector

EB-992F/982W/972/118/W49

EPSON
EXCEED YOUR VISION



High Images Quality
in Bright Classroom

Easy Setting

Bigger and Brighter Image 

Worry Free For Maintenance

ProSelecta

View :: Compare :: Select - www.ProSelecta.com

Auto Vertical Keystone

Auto Vertical Keystone automatically detects and corrects image distortion when the foot lever is used to adjust the height of a projected image, saving setup time.



Screen Mirroring with Mira cast® (EB-992F only)

Miracast support makes it easy to connect smart devices or laptops to a projector. This feature can be used without additional options or the installation of an application for wireless connection. Quick wireless connection makes the presentation smart and eliminates annoying cabling.



Miracast® is a registered trademark of Wi-Fi Alliance®

Lamp Life

A long lamp life reduces maintenance and costs. Lamps last up to 17,000 hours in ECO mode, the equivalent of 14 years' worth of use*.



* (6 hours) x (200 weekdays/year) x (14 years) — 17,000 hours lamp life in ECO mode.

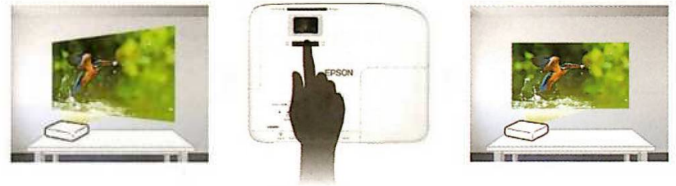
Lens Shutter

The lens shutter can be used to quickly stop and start projection without actually turning power off and on. This feature temporarily blocks an image projected onto a whiteboard, allowing the whiteboard to be used as a whiteboard.



Horizontal Keystone Slider

The intuitive Horizontal Keystone Slider makes it easy to adjust the shape of an image to evenly rectangular when the projector is placed to the side of the projection area, saving setup time.



Various Interfaces

The projector supports a range of connectivity options, including HDMI, VGA, and USB. These interfaces support connection to both the latest digital devices as well as to legacy analog products that are already in classrooms, without the need for adaptors.



WPA2 / WPA3-Enterprise

WPA2/WPA3-Enterprise provides a safe method of wireless connectivity so that projectors can connect to a business environment over a secure wireless network.



Home Screen

The home screen offers quick access to frequently used functions. Connected interfaces can be recognized at a glance and switched instantaneously. The information needed when setting up a wireless connection is projected on-screen, making connection fast and easy.





White/Color Light Output

Up to 4,200 lm* brightness ensures visibility in bright conference rooms and classrooms.



*EB-982W: 4,200lm. EB-972: 4,100lm. EB-992F: 4,000lm, EB-118/W49: 3,800lm

Color Light Output



Epson's 3LCD technology delivers bright images in vivid color. Projectors should provide not only high white light output but also high color light output. If color light output is low, color images appear dull and dark.

Epson 3LCD projectors produce brighter colors than 1-chip DLP* competitors.

3LCD



1-chip DLP



DLP is a registered trademark or a trademark of Texas Instruments in the US and/or other countries.

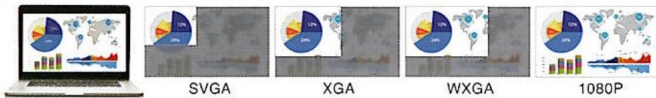
Resolution

High-resolution projectors capture all the information from PCs and other devices, helping to ensure smooth communication.



<1080p resolution provides sharper and more detailed images>

<Higher resolution provides much information>



Bigger and Brighter Images

The 992F series deliver large, bright images that are clearly visible even from the back of a room, which makes for stress-free viewing.



Up to Four Screens at Once with iProjection

The Epson iProjection* app can be used to easily share and control contents from up to four connected devices simultaneously.



*Epson iProjection eliminates the need for annoying cabling by transferring still images and files from smart devices to projectors, for smooth wireless projection.

Split Screen Function

A split screen function allows two separate image sources to be projected on a single screen. This function allows the projector to perform a dual role, eliminating the need for a second projector.



Split Screen Function for Wired / Non-wired Devices

A split screen function enables the simultaneous projection of two images from separate devices through both wired and wireless connections. Lessons in the classroom can be made more engaging by connecting a projector with a document camera and a PC or tablet.



Optical Zoom

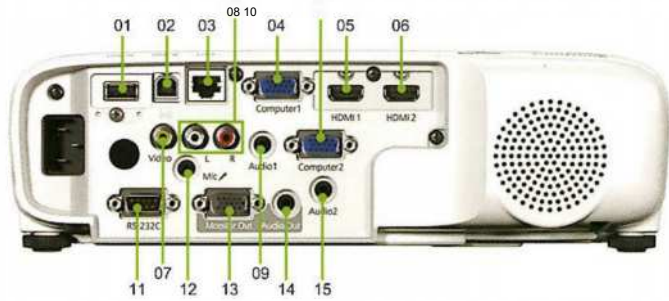
Optical zoom provides the flexibility to adjust the projector's installation location while still maintaining the desired picture size.

flexibility to adjust the projector's installation location while still maintaining the desired picture size.



SPECIFICATIONS

		EB-W49	EB-118	EB-972	EB-982W	EB-992F
Specification of Main Parts	LCD	Size	0.59-inch (C ² fine)	0.55-inch (C ² fine)	0.55-inch (C ² fine)	0.59-inch (C ² fine)
		Pixel Number	1,024,000 dots (1280 x 800) x 3	786,432 dots (1024 x 768) x 3		1,024,000 dots (1280 X 800) x 3
		Native Resolution	WXGA (16:10)	XGA(4:3)		WXGA (16:10)
	Projection Lens	Manual focus & 1.2x optical zoom		Manual focus & 1.6x optical zoom		
		F=1.49-1.72/F=16.9mm-20.28mm		F=1.51 -1.99/F=18.2mm-29.2mm		
Lamp	Type	210W UHE		230 W UHE		
	Life (Brightness Control: Normal / ECO)	8,000/17,000 hours		6,500/17,000 hours		
Screen Size (Zoom: Wide)		33 to 320 inch	30 to 300 inch	27 to 262 inch	29 to 280 inch	30 to 300 inch
Projection Distance (Zoom: Wide)		0.91 to 9.07 m	0.89 to 9.12 m	0.85 to 8.52 m	0.85 to 8.45 m	0.87 to 8.88 m
Throw Ratio (Zoom: Wide)		1.3	1.48	1.58	1.38	1.32
Offset		10:1	8:1	19.4:1	10:0	
Light Output		3,800		4,100	4,200	4,000
Color Light Output		3,800		4,100	4,200	
Contrast		16000:1				
Sound Output		Monaural: 5W x 1		Monaural: 16W x 1		
Keystone Correction	Vertical	-30 to +30 degrees				
	Horizontal	-30 to +30 degrees				
Terminal	Computer in	D-sub15pinx2				
	Monitor out	D-sub 15pin x 1				
	Video in	Composite: RCA (Yellow) x 1				
	Audio in	RCA (White/L, Red R) / Stereo mini x 2				
	Audio out	Stereo mini x 1				
	MIC	N/A		Stereo mini x 1		
	HDMI	2				
	RS-232C	D-sub9pinx 1				
	USBType-A	1 (for Wireless LAN, Firmware update, Copy OSD Settings)				
	USBType-B	1 (for Firmware update, Copy OSD Settings)				
	Wired LAN	RJ45 x 1				
Features	Quick Corner	Yes				
	Split Screen	Yes				
	USB Display	Yes				
	PC Free (USB Memory)	Yes				
	Frontal Exhaust	Yes				
	Wireless Connection	Optional (ELPAP11)				Built-in
	Miracast	N/A				Yes
Direct Power On		Yes				
Direct Power Off		Yes				
Cool-down Period		Instant off				
Power Supply Voltage		100 - 240 V AC +/-10%, 50/60 Hz				
Power Consumption	Lamp On	327W				
	Standby (communication off)	0.3W				
Dimension	Exclude Feet (WxHxD)	302 x 87 x 249 mm		309x90x282 mm		
Weight		Approx. 5.95 lbs./2.7 kg	Approx. 6.17 lbs./2.8 kg	Approx. 6.83 lbs./3.1 kg		
Fan Noise	Brightness Control: Normal/ECO	37dB/28dB				



01 USB-A	02 USB-B	03 LAN
04 Computer1	05 HDM11	06 HDMI 2
07 Video	08 Audio-in	09 Audio 1
10 Computer 2	11 RS-232C	12 Mic (not for EB-W49)
13 Monitor Out	14 Audio Out	15 Audio 2

Optional Accessories

Spare Lamp	ELPLP97
Air Filter Set (for EB-W49/EB-118)	ELPAF32
Air Filter Set (for EB-972/EB-982W/EB-992F)	ELPAF54
Wireless LAN Unit (except EB-992F)	ELPAP11
Soft Carrying Case	ELPKS70

Supplied Accessories

Remote Control (English)
Battery for Remote Control (AAx2)
Power Cable (1.8m)
Computer Cable (1.8m)



2 Year Onsite Warranty Service to be provided for local purchase only.
 «The warranty service can be extended by purchasing Epson Coverplus Extended Warranty. For more information, please contact Epson customer support.
 For Standard warranty terms & conditions, please refer to <https://www3.epson.com/hk/eservice/ics>

Bold, Bright, Beautiful... 3LCD Technology

3LCD technology achieves bright, natural images and smooth, sharp video playback. No color break-up makes images gentle on the eyes.
 Optical unit w.th high light-use efficiency



EPSON
EXCEED YOUR VISION

Epson Hong Kong Limited

Unit 715-723, 7/F Trade Square, 681 Cheung Sha Wan Road, Cheung Sha Wan, Kowloon, H.K.
 *Please call our sales hotlines for demonstration at our showroom.

Epson Authorized Customer Service Centre
 Wah Fung Computer Services Ltd.
 Unit 901,9/F, Westin Centre, 26 Hung To Road,
 Kwun Tong, Kowloon, Hong Kong

HK Sales Hotline : (852) 2827 8711
 HK Technical Hotline : (852) 2827 8911
 Macau Hotline : (853) 2850 8065

URL: www.epson.com.hk

MAR20-01-PROJECTOR