

E12339

First Edition  
April 2017

ASUS ZenBeam™ Go

# IN SEARCH OF INCREDIBLE

E-Manual

**ASUS**

**ProSelecta**

View :: Compare :: Select - [www.ProSelecta.com](http://www.ProSelecta.com)

## COPYRIGHT AND WARRANTY INFORMATION

No part of this manual, including the products and software described in it, may be reproduced, transmitted, transcribed, stored in a retrieval system, or translated into any language in any form or by any means, except documentation kept by the purchaser for backup purposes, without the express written permission of ASUSTeK COMPUTER INC. ("ASUS").

Product warranty or service will not be extended if: (1) the product is repaired, modified or altered, unless such repair, modification or alteration is authorized in writing by ASUS; or (2) the serial number of the is defaced or missing.

ASUS PROVIDES THIS MANUAL "AS IS" WITHOUT WARRANTY OF ANY KIND, EITHER EXPRESS OR IMPLIED, INCLUDING BUT NOT LIMITED TO THE IMPLIED WARRANTIES OR CONDITIONS OF MERCHANTABILITY OR FITNESS FOR A PARTICULAR PURPOSE. IN NO EVENT SHALL ASUS, ITS DIRECTORS, OFFICERS, EMPLOYEES OR AGENTS BE LIABLE FOR ANY INDIRECT, SPECIAL, INCIDENTAL, OR CONSEQUENTIAL DAMAGES (INCLUDING DAMAGES FOR LOSS OF PROFITS, LOSS OF BUSINESS, LOSS OF USE OR DATA, INTERRUPTION OF BUSINESS AND THE LIKE), EVEN IF ASUS HAS BEEN ADVISED OF THE POSSIBILITY OF SUCH DAMAGES ARISING FROM ANY DEFECT OR ERROR IN THIS MANUAL OR PRODUCT.

Products and corporate names appearing in this manual may or may not be registered trademarks or copyrights of their respective companies, and are used only for identification or explanation and to the owners' benefit, without intent to infringe.

SPECIFICATIONS AND INFORMATION CONTAINED IN THIS MANUAL ARE FURNISHED FOR INFORMATIONAL USE ONLY, AND ARE SUBJECT TO CHANGE AT ANY TIME WITHOUT NOTICE, AND SHOULD NOT BE CONSTRUED AS A COMMITMENT BY ASUS. ASUS ASSUMES NO RESPONSIBILITY OR LIABILITY FOR ANY ERRORS OR INACCURACIES THAT MAY APPEAR IN THIS MANUAL, INCLUDING THE PRODUCTS AND SOFTWARE DESCRIBED IN IT.

Copyright © 2017 ASUSTeK COMPUTER INC. All Rights Reserved.

## LIMITATION OF LIABILITY

Circumstances may arise where because of a default on ASUS' part or other liability, you are entitled to recover damages from ASUS. In each such instance, regardless of the basis on which you are entitled to claim damages from ASUS, ASUS is liable for no more than damages for bodily injury (including death) and damage to real property and tangible personal property; or any other actual and direct damages resulted from omission or failure of performing legal duties under this Warranty Statement, up to the listed contract price of each product.

ASUS will only be responsible for or indemnify you for loss, damages or claims based in contract, tort or infringement under this Warranty Statement.

This limit also applies to ASUS' suppliers and its reseller. It is the maximum for which ASUS, its suppliers, and your reseller are collectively responsible.

UNDER NO CIRCUMSTANCES IS ASUS LIABLE FOR ANY OF THE FOLLOWING: (1) THIRD-PARTY CLAIMS AGAINST YOU FOR DAMAGES; (2) LOSS OF, OR DAMAGE TO, YOUR RECORDS OR DATA; OR (3) SPECIAL, INCIDENTAL, OR INDIRECT DAMAGES OR FOR ANY ECONOMIC CONSEQUENTIAL DAMAGES (INCLUDING LOST PROFITS OR SAVINGS), EVEN IF ASUS, ITS SUPPLIERS OR YOUR RESELLER IS INFORMED OF THEIR POSSIBILITY.

## SERVICE AND SUPPORT

Visit our multi-language web site at <https://www.asus.com/support/>

# Table of Contents

|                                          |   |
|------------------------------------------|---|
| About this manual .....                  | 5 |
| Conventions used in this manual .....    | 6 |
| Typography.....                          | 6 |
| Multi-language versions .....            | 6 |
| Safety precautions .....                 | 7 |
| Using your LED projector.....            | 7 |
| Servicing and replacement of parts ..... | 7 |
| Caring for your LED projector .....      | 8 |
| Proper disposal.....                     | 8 |

## Chapter 1: Knowing your LED projector

|                         |    |
|-------------------------|----|
| Features .....          | 10 |
| Top view.....           | 10 |
| Front view.....         | 12 |
| Rear view .....         | 13 |
| Right side.....         | 15 |
| Left side .....         | 16 |
| Bottom view .....       | 17 |
| Extended features ..... | 18 |
| Flashlight .....        | 18 |
| SOS .....               | 19 |

## Chapter 2: Setting up

|                                                     |    |
|-----------------------------------------------------|----|
| Operating your LED projector .....                  | 22 |
| Connect the LED projector to the power adapter..... | 22 |
| Connect the LED projector to your device.....       | 24 |
| Connecting micro USB devices .....                  | 24 |
| Connecting USB Type-C devices.....                  | 25 |
| Connecting peripherals.....                         | 26 |
| Press the power button .....                        | 27 |
| Open the lens cover and adjust the focus ring.....  | 28 |
| Screen size and projection distance table.....      | 29 |

## **Chapter 3: Using the LED projector**

|                                      |    |
|--------------------------------------|----|
| Downloading the companion apps ..... | 32 |
| Using the companion app .....        | 33 |
| Settings .....                       | 33 |
| Projection .....                     | 33 |
| Brightness.....                      | 34 |
| Keystone.....                        | 34 |
| Projection Position.....             | 34 |
| Others .....                         | 34 |
| Splendid.....                        | 34 |
| Information.....                     | 35 |

## **Appendices**

|                                                                |    |
|----------------------------------------------------------------|----|
| FAQs .....                                                     | 38 |
| Federal Communications Commission Statement .....              | 40 |
| Regional notice for California .....                           | 40 |
| Canadian Department of Communications Statement .....          | 41 |
| Global Environmental Regulation Compliance and Declaration ... | 41 |
| ASUS Recycling/Takeback Services .....                         | 41 |
| Specifications for E1Z LED projector.....                      | 42 |

# About this manual

This manual provides information about the hardware and software features of your LED projector through the following chapters:

## **Chapter 1: Knowing your LED Projector**

This chapter details the parts of your LED projector and its accompanying remote control.

## **Chapter 2: Setting up**

This chapter shows you how to set up your LED projector and use its parts for input device connection.

## **Chapter 3: Using the LED projector**

This chapter describes the features of the LED projector's control panel buttons and how to use them to launch the functions of your LED projector.

## **Appendices**

This section includes safety notices for your LED projector.

## Conventions used in this manual

To highlight key information in this manual, some text are presented as follows:

---

**IMPORTANT!** This message contains vital information that must be followed to complete a task.

---

---

**NOTE:** This message contains additional information and tips that can help complete tasks.

---

---

**WARNING!** This message contains important information that must be followed to keep you safe while performing tasks and prevent damage to your LED projector's data and components.

---

## Typography

**Bold** = This indicates a menu or an item that must be selected.

*Italic* = This indicates sections that you can refer to in this manual.

## Multi-language versions

Download other language versions of this E-Manual via this website:

**<https://www.asus.com/support/>**

# Safety precautions

## Using your LED projector

- Refer to the manual and take note of the safety instructions before operating your LED projector.
- Follow the notes and warnings stated in the user manual.
- DO NOT place your LED projector on uneven or unstable surfaces.
- DO NOT use your LED projector in smoky environments. Smoke residue may cause build-up on critical parts and damage the LED projector or decrease its performance.
- DO NOT use damaged power cords, accessories, and other peripherals with your LED projector.
- Keep the LED projector's plastic packages out of the reach of children.
- DO NOT block or place anything near the LED projector's ventilation holes. Doing so may cause internal heat build-up that can degrade picture quality and damage the projector.
- Ensure that the operating voltage of your LED projector matches the voltage of your power source.

## Servicing and replacement of parts

- DO NOT disassemble or attempt to service this LED projector by yourself. Contact your local ASUS service center for assistance.
- Risk of explosion if battery is replaced by an incorrect type. Dispose used batteries according to safety instructions and contact your local ASUS service center for assistance.
- When replacing parts of your LED projector, purchase items as specified by ASUS and contact your local service center for assistance.

## Caring for your LED projector

- Switch off then unplug the LED projector from the power outlet before cleaning it.
- When cleaning the LED projector's housing, use a clean soft cloth dampened with water or a mix of water and neutral detergent. Wipe it dry using a soft dry cloth.
- Ensure that the lens is cool before cleaning it. Gently wipe the lens using a lens cleaning paper. **DO NOT** touch the lens with your hands.
- **DO NOT** use liquid or aerosole cleaners, benzene, or thinners on your LED projector.
- Never operate this LED projector immediately after moving it from a cold location. When the LED projector is exposed to a drastic change in temperature, moisture may condense on the lens and its other internal parts. To prevent this, use the unit two (2) hours after an extreme or sudden change in temperature occurs.

## Proper disposal



**DO NOT** throw your LED projector in municipal waste. This product has been designed to enable proper reuse of parts and recycling. The symbol of the crossed out wheeled bin indicates that the product (electrical, electronic equipment and mercury-containing button cell battery) should not be placed in municipal waste. Check local regulations for disposal of electronic products.



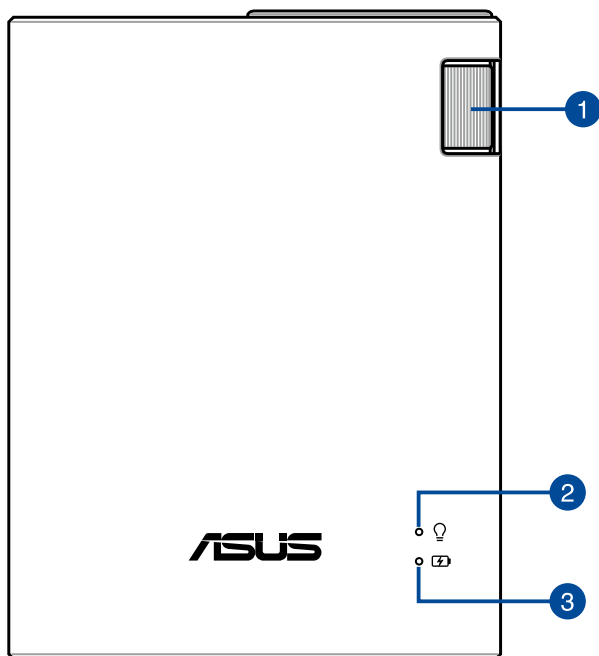
**DO NOT** throw the battery in municipal waste. The symbol of the crossed out wheeled bin indicates that the battery should not be placed in municipal waste.



# ***Chapter 1: Knowing your LED projector***

# Features

## Top view



### 1 Focus ring

The focus ring allows you to adjust the image focus of your LED projector.

## 2 Power indicator and battery status indicator

This LED indicator indicates the following scenarios for your LED projector:

- It lights up when the LED projector is powered on.
- It lights up as either green or red depending on the battery charge status.

For details on how this LED indicator functions as a battery status indicator, refer to the following table:

| Color                  | Status                                                                                                                                                                                      |
|------------------------|---------------------------------------------------------------------------------------------------------------------------------------------------------------------------------------------|
| <b>Solid Green</b>     | The LED projector is plugged to a power source, running on battery mode and the battery power is more than 25%, or running in power bank mode.                                              |
| <b>Solid Red</b>       | The LED projector is running on battery mode only and the battery power is not more than 25%.                                                                                               |
| <b>Blinking Orange</b> | The temperature of the LED projector is too high and will lower its brightness automatically. The LED projector will shut down if the temperature is still too high to prevent overheating. |

## 3 Battery charge indicator

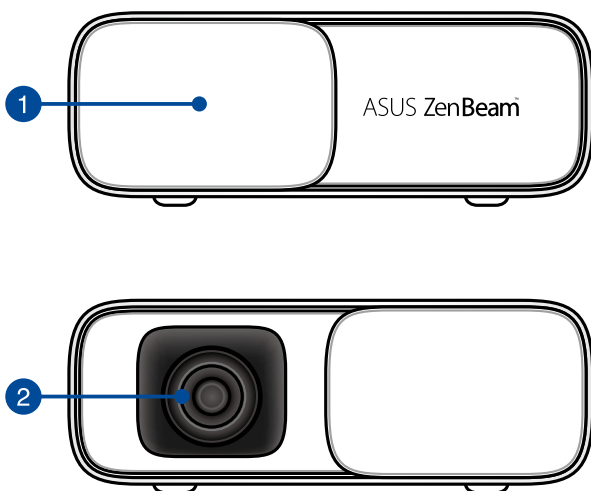
This LED indicator lights up when the LED projector is plugged to a power source using its power adapter.

---

**IMPORTANT!** Use only the bundled power adapter to charge the battery pack and supply power to your LED projector.

---

## Front view



### 1 Lens cover

The lens cover protects the lens from scratches and possible dirt build-up.

---

**IMPORTANT!** Remove the lens cover before using your LED projector.

---

### 2 Lens

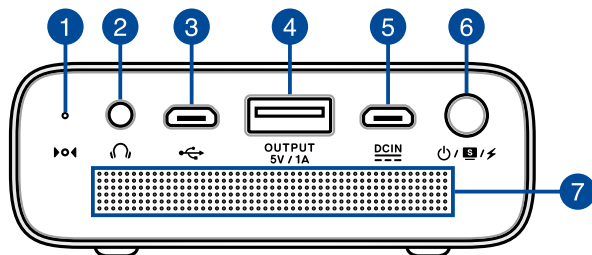
The lens projects video or image files onscreen from your input device.

---

#### **WARNING!**

- DO NOT touch the lens with your hands or any sharp object.
  - DO NOT look directly into the lens.
-

## Rear view



### 1 Manual reset hole

Insert a straightened paper clip in this hole to restore your LED projector to its default settings.

### 2 Audio output jack port

The audio output jack port allows you to connect your LED projector to amplified speakers or headphones.

### 3 Micro USB 2.0 port

This port also allows you to connect your LED projector to a compatible device to stream media contents.

### 4 Power output port

This power output port provides up to 5V/1A of output voltage and current. You can connect your mobile device to this port to keep it charged while using it with your LED projector.

## 5 Power (DC) input port

Insert the bundled power adapter into this port to charge the battery pack and supply power to your LED projector.

---

**IMPORTANT!** Use only the bundled power adapter to charge the battery pack and supply power to your LED projector.

---

**WARNING!** The adapter may become warm to hot while in use. DO NOT cover the adapter and keep it away from your body while it is connected to a power source.

---

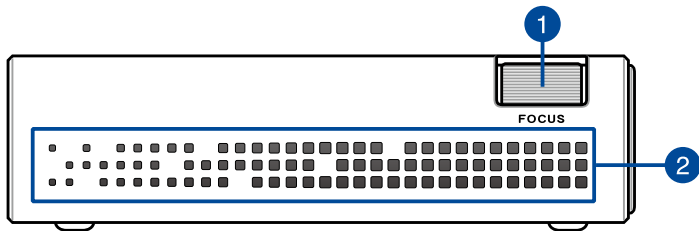
## 6 Power / Splendid button

- Long press this power button to turn on or turn off your LED projector.
- Short press this button after turning on your LED projector to switch between **Splendid** modes.

## 7 Audio speaker

This LED projector uses SonicMaster technology to provide hi-fi sound quality, with richer bass sounds, straight from the builtin audio speaker.

## Right side



### 1 Focus ring

The focus ring allows you to adjust the image focus of your LED projector.

### 2 Air vents

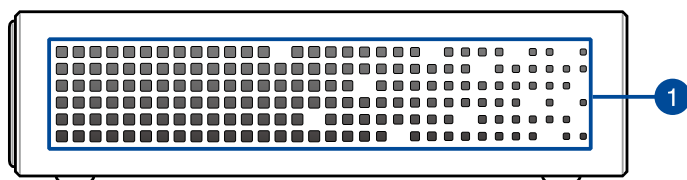
The air vents allow cool air to enter and warm air to exit the LED projector.

---

**WARNING!** Ensure that paper, books, clothing, cables, or other objects do not block any of the air vents or else overheating may occur.

---

## Left side



### 1 Air vents

The air vents allow cool air to enter and warm air to exit the LED projector.

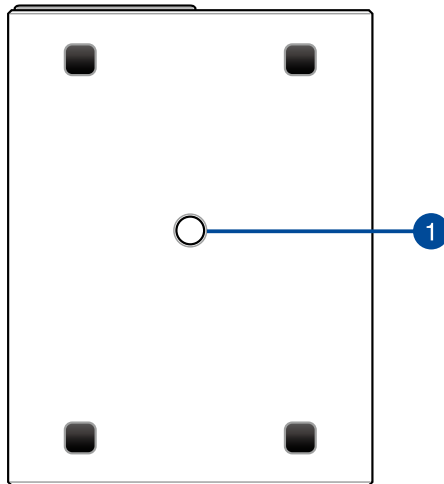
---

**WARNING!** Ensure that paper, books, clothing, cables, or other objects do not block any of the air vents or else overheating may occur.

---



## Bottom view



### 1 Tripod socket

Attach the LED projector to a tripod using this socket.

## Extended features

Your LED projector also have stand-alone features that are launched by pressing the **Power / Splendid** button while your LED projector is on battery mode.

---

### NOTE:

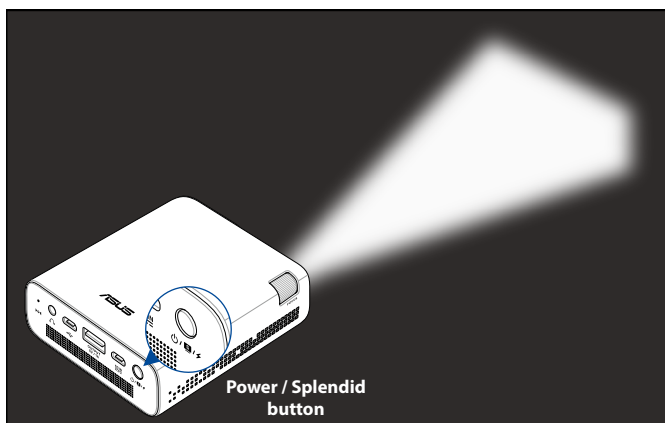
- These feature are only available when no power adapter or signal is connected to the LED projector.
  - To turn off or switch between the flashlight and SOS feature of your LED projector, just press the **Power / Splendid** button until your preferred lighting feature is disabled or enabled.
- 

**IMPORTANT!** Ensure that your LED projector is charged and can run on battery mode before enabling these features. Battery time varies depending on usage.

---

## Flashlight

The LED projector flashes a steady white light when you use this feature.



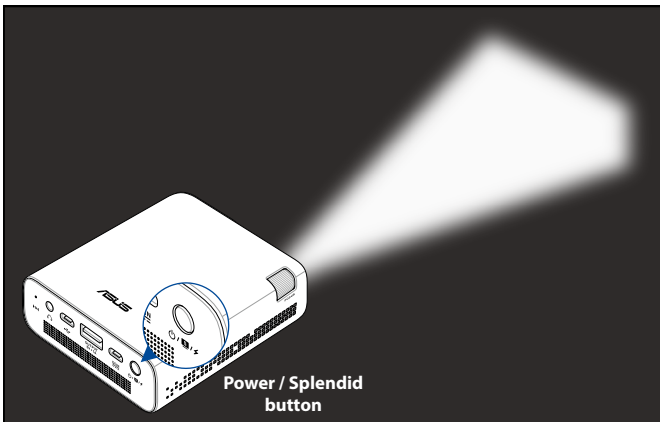
To use your LED projector as a flashlight:

1. Disconnect all peripherals from your LED projector then long press the power button to turn it on.

2. Open the cover of your LED projector's lens.
3. Press the **Power / Splendid** button repeatedly until the LED projector flashes a steady white light.

## SOS

The LED projector flashes a blinking white light when you use this feature.



To use your LED projector as an emergency light:

1. Disconnect all peripherals from your LED projector then long press the power button to turn it on.
2. Open the cover of your LED projector's lens.
3. Press the **Power / Splendid** button repeatedly until the LED projector flashes a blinking white light.



# ***Chapter 2: Setting up***

# Operating your LED projector

This portable LED projector allows you to plug and play your devices so you can easily open multimedia files and hear audio straight from its built-in SonicMaster speakers.

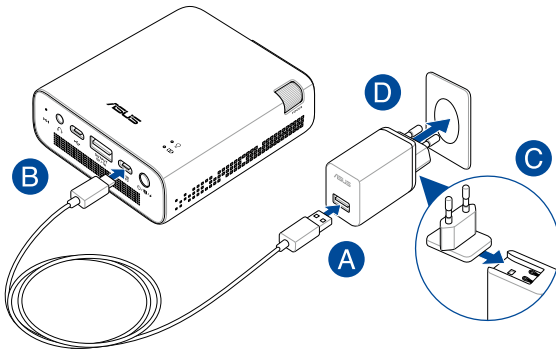
For your safety and to maintain the quality of this unit, refer to the following steps when operating your LED projector.

## Connect the LED projector to the power adapter

- A. Connect the micro USB cable to the power adapter.
- B. Connect the micro USB connector into your LED projector.
- C. Insert the plug head into the power adapter.
- D. Plug the power adapter into a grounded power outlet.



Charge the LED projector for **3 hours** before using it in battery mode for the first time.



---

**NOTE:** The power adapter may vary in appearance, depending on models and your region.

---

---

**IMPORTANT!**

- Use only the bundled power adapter to charge the battery pack and supply power to your LED projector.
  - Ensure that your LED projector is connected to the power adapter before turning it on for the first time. We strongly recommend that you use a grounded wall socket while using your LED projector on power adapter mode.
  - The socket outlet must be easily accessible and near your LED projector.
  - To disconnect your LED projector from its main power supply, unplug your LED projector from the power socket.
- 

---

**WARNING!**

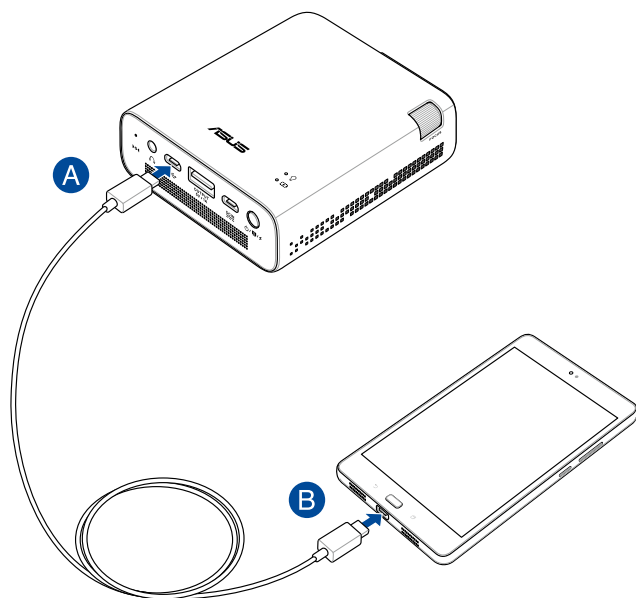
Read the following precautions for your LED projector's battery:

- The battery capacity will vary depending on the environment temperature, humidity, and LED Projector usage.
  - The battery used in this device may present a risk of fire or chemical burn if removed or disassembled.
  - Follow the warning labels for your personal safety.
  - Risk of explosion if battery is replaced by an incorrect type.
  - DO NOT dispose of in fire.
  - Never attempt to short-circuit your LED projector's battery.
  - Never attempt to disassemble and reassemble the battery.
  - Discontinue usage if leakage is found.
  - The battery and its components must be recycled or disposed of properly.
  - Keep the battery and other small components away from children.
-

## Connect the LED projector to your device

### Connecting micro USB devices

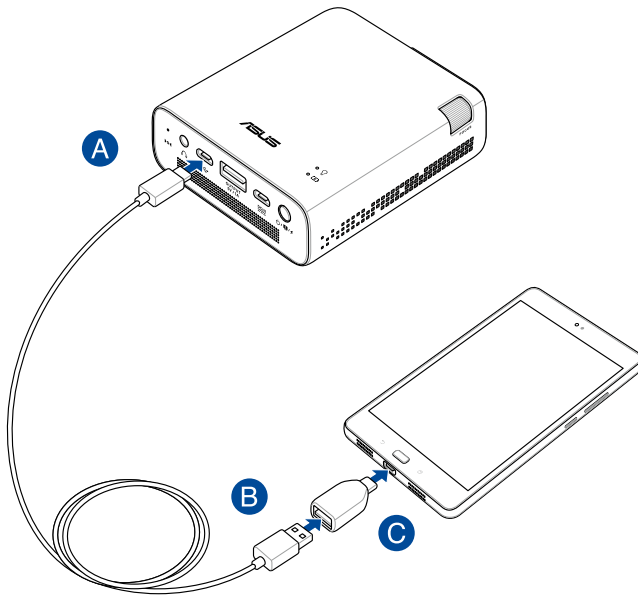
- A. Connect one end of the micro USB to micro USB cable into your LED projector.
- B. Connect the other end of the micro USB to micro USB cable to your device.



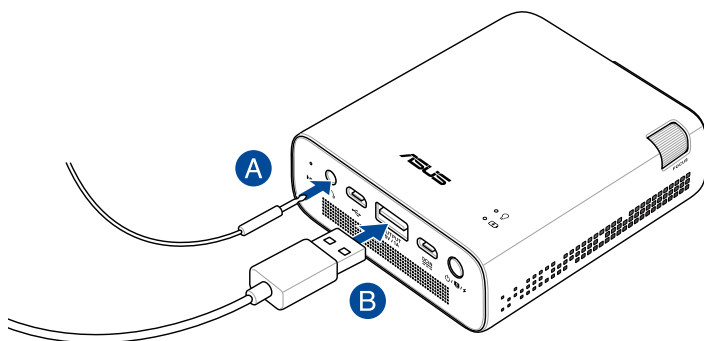


## Connecting USB Type-C devices

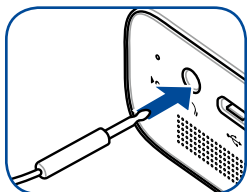
- A. Connect the micro USB connector of the micro USB cable into your LED projector.
- B. Connect the other end of the micro USB cable to the USB Type-C male to USB Type-A female adapter.
- C. Connect the adapter to your device.



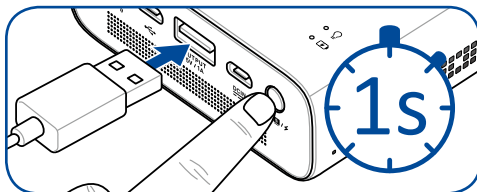
## Connecting peripherals



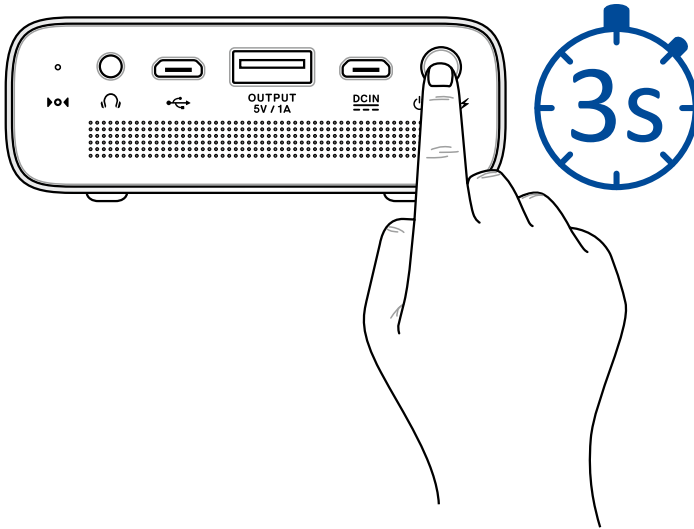
### A Audio output



### B Power output (5V/1A)



## Press the power button



---

**NOTE:** The battery pack inside your LED projector stops charging while the LED projector is in use. Refer to the battery indicator for the current charge status of your LED projector. You may also refer to the *Top View* section in this manual for more details.

---

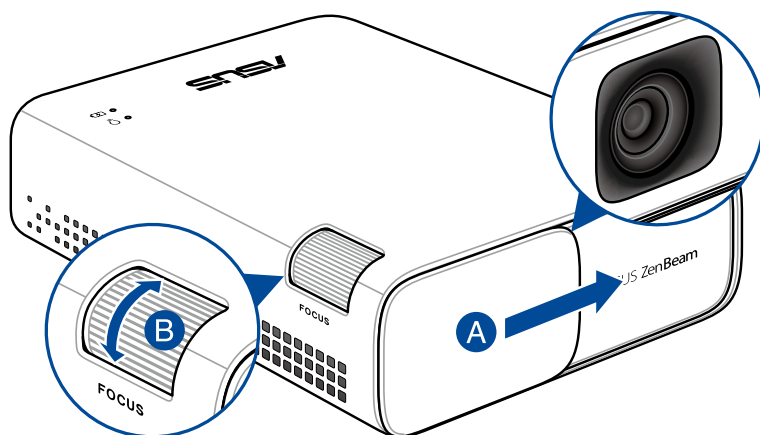
## Open the lens cover and adjust the focus ring

---

**NOTE:** Use a still image when adjusting the onscreen display.

---

- A. Open the lens cover by moving it to the right.
- B. Adjust the image focus of the projection onscreen by moving the focus ring up or down.



## Screen size and projection distance table

Adjust the LED projector's distance from the screen using the table below.

| Screen size - 16:9 |               | Projection distance<br>(meters) |
|--------------------|---------------|---------------------------------|
| (inches)           | (millimeters) |                                 |
| 16                 | 394           | 0.5                             |
| 32                 | 813           | 1.0                             |
| 100                | 2540          | 3.1                             |
| 120                | 3048          | 3.7                             |

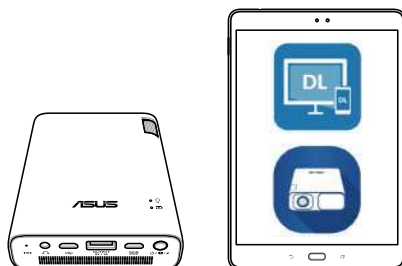


# ***Chapter 3: Using the LED projector***

## Downloading the companion apps

Your LED projector requires additional companion apps on your device before you can stream media contents from it.

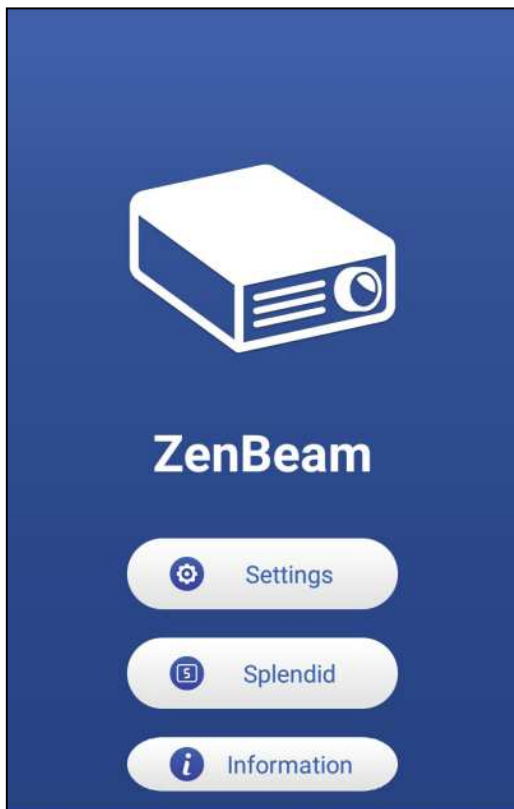
- A. Connect your device to the Internet, then log in or sign up for a Google account.
- B. Scan the QR codes or Launch **Play Store** and search for the companion apps.
- C. Install the companion apps.





## Using the companion app

After you have installed the additional companion apps, you can use the apps to change the settings of your LED projector.



### Settings

Select this menu option to adjust your LED projector settings.

### Projection

Turn this menu option ON to stream media contents from your device.

## Brightness

Move the slider to adjust the brightness of your projection onscreen.

## Keystone

### Auto keystone

Select this menu option to automatically adjust the alignment of your image.

### Correction

This option allows you to manually adjust the alignment of your image. You can also move the slider to make quick adjustments.

## Projection Position

This option allows you to change the way your projections are oriented onscreen based from the current location of your LED projector.

You may change your projection's orientation to correspond with the location where your LED projector is currently placed: **Front table, Rear table, Front ceiling, Rear Ceiling.**

## Others

### Reset all settings

This option restores all the default settings of your LED projector.

## Splendid

Select this menu option to activate either of the following display modes, depending on how the LED projector is powered on. You may also directly launch this menu option by pressing **Power / Splendid** button.

Refer to the following information for details on the different modes you can activate via **Splendid**:

- **Presentation mode** - This mode allows you to optimize the brightness of your LED projector and is suitable for quick presentations of up to ninety (90) minutes.
- **Standard** - This mode fits general display uses of the LED projector.
- **Theater** - This mode is recommended when using the LED projector to display videos.
- **Eco mode** - This mode allows the LED projector to run under minimum power consumption for up to five (5) hours.

---

**NOTE:**

- Flashlight and SOS mode are only available when no power adapter or signal is connected to the LED projector.
  - The battery capacity will vary depending on the environment temperature, humidity, and LED Projector usage.
- 

## Information

Select this menu option to see an overview of information about your LED projector. The **Battery life**, **Projector firmware version**, and **Model Name** will be displayed on this page.



# ***Appendices***

## FAQs

### 1. Does my LED projector work with all phones?

The E1Z LED projector will work with android 5.0 or above devices that support host storage mode.

### 2. My LED projector does not project anything. How can I fix this?

You can try doing any of the following suggestions:

- Ensure that you have installed the companion apps.
- If the DisplayLink Presenter app does not pop-up when you connect your android device, try restarting your LED projector and your android device.
- If the problem still exists, contact your local ASUS service center for assistance.

### 3. Why does my android device keep disconnecting with my LED projector?

Some android devices will stop the USB connection after the screen is off or enters the lock screen mode. If this happens, try keeping your android device awake or disable sleep mode.

### 4. Why is audio is not coming out from my LED projector?

Check whether USB audio routing is enabled on your android device. By default, android devices will automatically route audio to the USB port when an USB audio peripheral is connected.

To manually configure the USB audio routing settings, go to Settings > About > Software information > Build number (tap a few times) > Settings > Developer options > Disable USB audio routing.

## **5. Audio is stuttering and not playing correctly from my LED projector.**

USB audio performance may vary across different android devices and manufacturers. If audio performance from your android device is inconsistent, we recommend disabling USB audio routing and use the internal speakers instead.

To manually configure the USB audio routing settings, go to Settings > About > Software information > Build number (tap a few times) > Settings > Developer options > Disable USB audio routing.

# Federal Communications Commission Statement

This equipment has been tested and found to comply with the limits for a class B digital device, pursuant to Part 15 of the Federal Communications Commission (FCC) rules. These limits are designed to provide reasonable protection against harmful interference in a residential installation. This equipment generates, uses, and can radiate radio frequency energy and, if not installed and used in accordance with the instructions, may cause harmful interference to radio communications. However, there is no guarantee that interference will not occur in a particular installation. If this equipment does cause harmful interference to radio or television reception, which can be determined by turning the equipment off and on, the user is encouraged to try to correct the interference by one or more of the following measures:

- Reorient or relocate the receiving antenna.
- Increase the distance between the equipment and receiver.
- Connect the equipment to an outlet on a different circuit than that which the receiver is connected to.
- Consult the dealer or an experienced radio/TV technician for help.

This device complies with Part 15 of the FCC Rules. Operation is subject to the following two conditions:

1. This device may not cause harmful interference, and
2. This device must accept any interference that may cause undesired operation.

## Regional notice for California



### WARNING

Cancer and Reproductive Harm -

[www.P65Warnings.ca.gov](http://www.P65Warnings.ca.gov)



## Canadian Department of Communications Statement

This digital apparatus does not exceed the Class B limits for radio noise emissions from digital apparatus set out in the Radio Interference Regulations of the Canadian Department of Communications.

This class B digital apparatus complies with Canadian ICES-003.

## Global Environmental Regulation Compliance and Declaration

ASUS follows the green design concept to design and manufacture our products, and makes sure that each stage of the product life cycle of ASUS product is in line with global environmental regulations. In addition, ASUS disclose the relevant information based on regulation requirements.

Please refer to <http://csr.asus.com/english/Compliance.htm> for information disclosure based on regulation requirements ASUS is complied with:

### Japan JIS-C-0950 Material Declarations

### EU REACH SVHC

### Korea RoHS

## ASUS Recycling/Takeback Services

ASUS recycling and takeback programs come from our commitment to the highest standards for protecting our environment. We believe in providing solutions for you to be able to responsibly recycle our products, batteries, other components as well as the packaging materials. Please go to <http://csr.asus.com/english/Takeback.htm> for detailed recycling information in different regions.

## Specifications for E1Z LED projector

|                        |                            |                                                       |
|------------------------|----------------------------|-------------------------------------------------------|
| <b>Display</b>         | Display Technology         | 0.2" DLP®                                             |
|                        | Light Source               | R/G/B LED                                             |
|                        | Light Source Life (max)    | 30,000 hrs                                            |
|                        | True Resolution (native)   | WVGA 854 x 480                                        |
|                        | Light Output (Max. lumens) | 150 Lumens                                            |
|                        | Contrast Ratio             | 3500:1 DCR                                            |
|                        | Color Saturation (NTSC)    | 100%                                                  |
|                        | Display Colors             | 16.7 million colors                                   |
| <b>Projection Lens</b> | Throw Ratio                | 1.4 (32 in. @ 1 m @ 16:9)                             |
|                        | Projection Distance        | 0.5 m to 3.7 m                                        |
|                        | Projection/Screen Size     | 15 in. to 120 in.                                     |
|                        | Projection Offset          | 100%                                                  |
|                        | Zoom Ratio                 | Fixed                                                 |
| <b>Video Features</b>  | Picture Modes              | Presentation, Standard, Theater, Eco, Flashlight, SOS |
|                        | Keystone adjustment        | Digital (Up to ± 40 degree)                           |
|                        | Auto Keystone              | Yes                                                   |
|                        | Aspect Ratio               | 16:9                                                  |
|                        | Projector Placement        | Front table, Front ceiling, Rear table, Rear Ceiling  |
| <b>Audio Features</b>  | Built-in speakers          | 2W speaker (ASUS SonicMaster Audio technology)        |

*(continued on the next page)*

|                              |                                       |                                                   |
|------------------------------|---------------------------------------|---------------------------------------------------|
| <b>Signal Frequency</b>      | <b>Digital Signal Frequency</b>       | 24.7 KHz(H) to 74.6 KHz(H) / 50 Hz(V) to 60 Hz(V) |
| <b>Power</b>                 | <b>Power Consumption (Typical)</b>    | <18W                                              |
|                              | <b>Power Standby mode</b>             | <0.5W                                             |
|                              | <b>Internal Battery</b>               | 6400mAh (1A@5V)                                   |
|                              | <b>Battery Life</b>                   | 24Wh (up to 5 hours)                              |
| <b>Noise</b>                 | <b>Acoustic Noise</b>                 | 30 dB (Standard mode)                             |
|                              |                                       | 28 dB (Theater mode)                              |
| <b>Interface</b>             | <b>Signal Input</b>                   | USB (Android 5.0/ Windows)                        |
|                              | <b>Audio Out</b>                      | Earphone out                                      |
|                              | <b>USB 2.0 Port</b>                   | Micro USB Type B Port for charging (2A@9V)        |
|                              |                                       | USB Type A Port for Power Bank (1A@5V)            |
| <b>Mechanical Design</b>     | <b>Chassis Colors</b>                 | Golden                                            |
|                              | <b>Tripod Socket</b>                  | Yes                                               |
|                              | <b>Lens Cover</b>                     | Yes                                               |
| <b>Dimension</b>             | <b>Physical Dimension (W x H x D)</b> | 83 x 29 x 110 mm                                  |
| <b>Weight</b>                | <b>Net Weight (Esti.)</b>             | 307 g                                             |
| <b>Operating Temperature</b> | -10° C to 40° C                       |                                                   |
| <b>Operating Humidity</b>    | 20% to 90%                            |                                                   |

*(continued on the next page)*

**Accessories**

Two USB Type A to micro USB Type B cables, micro USB to micro USB cable, USB Type C OTG, projector cover, power adapter, AC plug, warranty card, quick start guide

**Regulation Approvals**

CB, CE, FCC, VCCI, CU, C-Tick, CCC, PSE, IEC62471, CEC

---

**NOTE:**

- Specifications are subject to change without prior notice.
  - Product availability may vary by region.
  - All brand and product names mentioned are trademarks of their respective companies.
-