

Panasonic

PT-LC75E PT-LC55E

Full-Featured, High-Performance
Go-Anywhere LCD Projectors

Quality Presentations the Easy Way

- 1** One-Touch Auto Setup with digital keystone correction
- 2** Extra short-throw lens allows display of large images in small rooms
- 3** Bright 1,200 ANSI, high contrast and excellent colour rendition



High-Quality, Go-Anywhere Projectors Packed with Top Features



Finally, projectors that provide top features without damaging your bottom line. With the PT-LC75E and PT-LC55E, Panasonic offers two micro-portable LCD projectors that represent a perfect balance of performance and price. The PT-LC75E XGA projector and PT-LC55E SVGA projector are packed with user-friendly features and advanced digital technologies. In picture quality, both models stand well above others in their class. Both deliver 1200 ANSI lumens of brightness, making them suitable for use in meeting rooms and classrooms. Both are



The PT-LC75E and PT-LC55E fit a host of user-friendly features into compact, attractive bodies that are about the size of an A4 file.

compact and lightweight (only 3 kg/6.6 pounds), making them easy to take anywhere you go. These multi-purpose projectors are ideal solutions for companies, schools, or offices looking for high performance without the high price.

Bright 1,200 ANSI lumens and a high 400:1 contrast ratio.

Weighs only 3 kg / 6.6 lbs.

Advanced technologies provide uniform colours, smooth gradation, and high-quality motion pictures*.

* Digital Cinema Reality and 3-D digital comb filter are featured on the PT-LC75E only.

One-Touch Auto Setup with digital key-stone correction — you're ready to go in about 1.5 seconds.

Extra short-throw lens* displays an 80-inch diagonal image at only 2.4 m, for large images even in small rooms.

* Features manual zoom and focus

Whisper-quiet at less than 30 dB*.

* In standard lamp power mode

Two computer signal inputs and monitor out capability.*

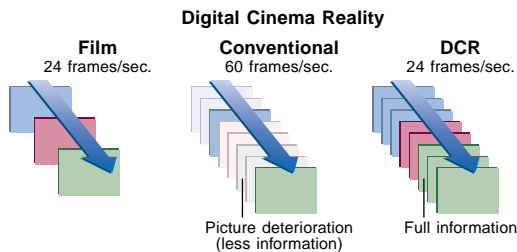
* Allows you to view your presentation both on a screen and on your PC display. Only one input can be used during RGB loop-through monitoring.

Bright 1200 ANSI Lumens, High 400:1 Contrast Ratio

The PT-LC75E and PT-LC55E deliver super-bright performance with 1200 ANSI lumens, thanks to a newly-designed, high-performance optical system and high-efficiency 160-W UHM™ lamp. The high contrast ratio of 400:1 ensures that images are sharp, crisp, and easy to see. Both models also provide excellent brightness uniformity of 90%.

Excellent Colour Rendition

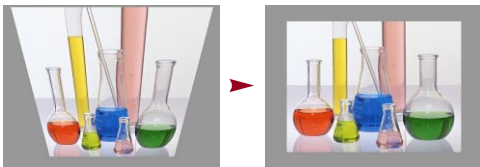
The use of advanced **10-bit digital gamma correction** circuitry with the latest algorithm gives the PT-LC75E and PT-LC55E naturally vivid, uniform colours and smooth image gradation. Plus, full compatibility with the “**sRGB**” standard colour space adds more accurate colour reproduction to your presentations. The PT-LC75E also delivers outstanding moving pictures thanks to a **Digital Cinema Reality (DCR)** circuit and **3-dimensional comb filter***. * For NTSC signals only



Digital Cinema Reality circuit preserves full image quality as it converts each frame of a movie source to TV signals.

One-Touch Auto Setup—Ready in Just 1.5 Seconds

The One-Touch Auto Setup function with digital key-stone correction saves adjustment hassles. Panasonic's original **built-in gravity sensor** determines the projector's angle relative to the floor (up to 30 degrees) and corrects for keystone distortion accordingly. This makes set-up super-easy: Just aim the projector at the screen and press the Auto Setup button. The projector handles all picture adjustments, from phasing and dot clocks to vertical and horizontal position. Our newly designed algorithm slashes set-up time to just 1.5 seconds—half the time of our previous models.



The One-Touch Auto Setup function features digital keystone correction with a built-in gravity sensor.

Extra Short-Throw Lens

The PT-LC75E and PT-LC55E are equipped with a large-diameter, extra short-throw lens that shortens the necessary projection distance by 25%. Conventional projectors often have to be positioned in the middle of the meeting table, with considerable distance between the lens and the screen. The shorter projection distance of the PT-LC75E and PT-LC75E saves space. For instance, 2.4 m or less is needed to project an 80-inch diagonal screen, allowing the projector to be placed at the front of the table. This convenient feature enables

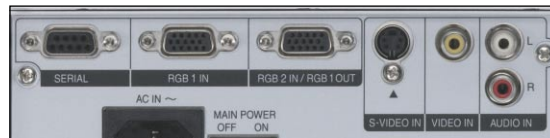
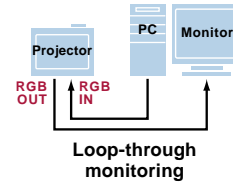
comfortable presentations with large, easy-to-see images even in small rooms.

Quiet Cooling Fans—Only 30 dB

Whisper-quiet fans and switchable dual-mode operation combine to reduce operating noise to 30 dB (in standard lamp power mode). A newly developed exhaust fan also minimises light leakage.

Accepts Up to Two RGB Inputs and One RGB Output

Two RGB inputs eliminate the need to re-connect equipment when giving two different presentations back to back. The RGB2 terminal can also serve as a loop-through monitoring terminal for the RGB1 input. For instance, an instructor in a classroom can use this to give a presentation on a large screen while following the same images on a PC, eliminating the need to keep looking at the screen behind.



Versatile terminals

Unique Index Window

Any image in the presentation, RGB or video input, can be frozen, stored in memory, and displayed on the left side of the screen as an Index Window, while the display of subsequent images continues on the right. This can make presentations much easier to understand.



3,000-Hour Lamp Life

The user can select from Standard and High lamp power modes. Designed for use in dark rooms, Standard mode uses a lower lamp power that minimises energy consumption and lengthens the lamp life up to 3,000 hours (2,000 hours in high lamp power mode).

Note: Brightness is reduced 25% in Low mode.

Additional Features

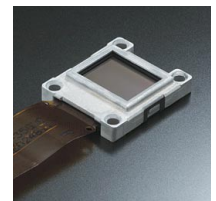
- HDTV compatibility
- Colour temperature selection (standard/high/low)
- Image mode selection (standard/dynamic/natural)
- Advanced shutter function for image muting
- 3x digital zoom
- Selectable 7-language on-screen menu (English, German, French, Spanish, Italian, Japanese, Chinese)
- VGA expansion on/off selectable
- Video expansion on/off selectable
- Soft carrying case supplied
- Ceiling mountable (option)



Controls are neatly arranged on the top panel for easy access.



Newly developed optical system unit



High-performance 0.7-inch LCD panel



Newly developed exhaust fan



Supplied card-type remote control

The sRGB Standard Colour Space

sRGB is a new standard that assures uniform colour expression among scanners, monitors, projectors and other imaging equipment. Applying the sRGB standard minimises hue deviations to ensure the same high level of colour reproduction in each device.

Optional Accessories

Wide conversion lens: ET-LEC75



Mounts in front of the standard-equipped lens to shorten the projection distance by 20%. Enables an 80-inch (2 m) diagonal screen projection at a distance of about 1.9 m (6.3 feet).



Full-function remote control: ET-RM100

An all-in-one wireless remote with built-in laser pointer. Also enables mouse control, including button clicking.

Ceiling mount bracket: ET-PKC75



Replacement lamp unit: ET-LAC75

D-sub 15-pin/BNC adapter cable: ET-ADBNC

Specifications

Native Resolution:	
PT-LC75E:	XGA (1024 x 768 pixels)
PT-LC55E	SVGA (800 x 600 pixels)
Brightness:	1200 ANSI lumens
Weight:	3 kg/6.6 lbs.
Dimensions	310 x 85.5 x 243 mm
(W x H x D):	(12-3/16" x 3-3/8" x 9-9/16")
Contrast Ratio:	400:1 (full white/full black)
Display Technology:	LCD (0.7" polysilicon panels),
PT-LC75E:	786,432 (1,024 x 768) x 3
PT-LC55E	480,000 (800 x 600) x 3
Lamp:	AC 160 W UHM™ lamp
Lamp Life:	3000 hours (in standard lamp power mode)
	2000 hours (in high lamp power mode)
Brightness Uniformity:	90%
Keystone Correction:	Digital, ±30° vertically (optically fixed)
Installation:	Ceiling/desk, front/rear (menu selection)
Audio:	2 W (mono)
Audible noise:	Less than 30 dB
Input Sources:	Computer (D-sub HD 15-pin x 2) S-Video (Mini DIN 4-pin x 1) Composite video (RCA x 1) Audio line in (RCA, L/R)
Output Sources:	VGA monitor out (D-sub HD 15-pin)
Computer Compatibility:	VGA, SVGA, XGA, SXGA, UXGA*, Mac * For PT-LC75E only
Video Compatibility:	PAL, PAL-M, PAL-N, SECAM, NTSC, M-NTSC
Number of Colours:	16.7 million
Aspect Ratio:	4:3 (16:9 compatible)

H-Sync/V-Sync Range:

PT-LC75E:	15–91 kHz, 50–87 Hz
PT-LC55E	15–70 kHz, 50–87 Hz
Lens:	Manual zoom/focus lens (1:1–1:1.2) F 1.7–1.9, f 21.5–25.8 mm
Image Size (diagonal):	33"–300" / 83.8–762 cm (aspect ratio: 4:3)
Control:	RS-232C (D-sub 9-pin)
Power Supply:	100–240 V AC (auto-voltage), 50/60 Hz
Power Consumption:	220 W (standby mode*: 2 W) * With fan stopped.
Security Lock:	Kensington MicroSaver Security System
Operating Temperature:	0°–40°C (32°–104°F)
Operating Humidity:	20%–80%
Safety Regulations:	EN60950/IEC60950, EN55024, EN55022 (B), EN61000-3-2, EN61000-3-3, VDE, GOST, MIC, CB, C-tick
Supplied Accessories:	<ul style="list-style-type: none"> • Card-type remote control unit • Batteries for remote control unit • Power cord • RGB cable (3 m/9.9') • AV cable (3 m/9.9') • Carrying bag
Optional Accessories:	Wide conversion lens: ET-LEC75 Ceiling mount bracket: ET-PKC75 Full-function wireless remote control: ET-RM100 Replacement lamp unit: ET-LAC75 D-sub 15-pin/BNC adapter cable: ET-ADBNC

Image size / projection distance

	Diagonal image size 4:3 aspect ratio	Distance to screen			
		With supplied lens		With optional wide conversion lens	
		min.	max.	min.	max.
PT-LC75E	0.8 m / 2.8'	1.1 m / 3.6'			
	1.0 m / 3.3'	1.2 m / 3.9'	–	1.4 m / 4.6'	1.1 m / 3.6'
	2.0 m / 6.7'	2.4 m / 7.9'	–	2.8 m / 9.2'	1.8 m / 5.9' – 2.2 m / 7.2'
	3.8 m / 12.5'	4.5 m / 14.8'	–	5.3 m / 17.4'	3.5 m / 11.5' – 4.3 m / 14.1'
	5.1 m / 16.7'	6.0 m / 19.7'	–	7.1 m / 23.3'	4.7 m / 15.4' – 5.7 m / 18.7'
	7.6 m / 25'	9.0 m / 29.5'	–	10.7 m / 35.1'	7.1 m / 23.3' – 8.6 m / 28.2'
PT-LC55E	0.8 m / 2.8'	1.1 m / 3.6'			
	1.0 m / 3.3'	1.2 m / 3.9'	–	1.4 m / 4.6'	1.1 m / 3.6'
	2.0 m / 6.7'	2.4 m / 7.9'	–	2.9 m / 9.5'	1.9 m / 6.2' – 2.3 m / 7.5'
	3.8 m / 12.5'	4.6 m / 15.1'	–	5.4 m / 17.7'	3.6 m / 11.8' – 4.3 m / 14.1'
	5.1 m / 16.7'	6.1 m / 20.0'	–	7.3 m / 24.0'	4.8 m / 15.7' – 5.8 m / 19.0'
	7.6 m / 25'	9.2 m / 30.2'	–	11.0 m / 36.1'	7.2 m / 23.6' – 8.7 m / 28.5'

* Image sizes and distances shown above are approximate.

Panasonic

Panasonic is the brandname of Matsushita Electric.

Weights and dimensions shown are approximate. Specifications subject to change without notice. This product may be subject to export control regulations. UHM is a trademark of Matsushita Electric Industrial Co., Ltd. PS/2, VGA and XGA are trademarks of International Business Machines Corporation. Macintosh is a registered trademark of Apple Computer, Inc. SVGA is a registered trademark of the Video Electronics Standards Association. Windows is a registered trademark of Microsoft Corporation. All other trademarks are the property of their respective trademark owners. Projection images simulated.