

Panasonic®

PT-L711U

PT-L701U

PT-L501U

Portable LCD Projectors

NTSC/M-NTSC/PAL/PAL-M/PAL-N/SECAM

- One-Touch Auto Setup with digital keystone correction
- Extra short-throw lens allows display of larger images
- Quiet fans (28dB*) and 2-mode lamp operation
- Index Window makes presentations easier to understand
- Impressive styling, available in three cabinet colours

* in low power mode

Simple
Smart
Stylish

One-Touch Auto Setup
with Keystone Correction



ProSelecta

View :: Compare :: Select - www.ProSelecta.com

Smart, Easy-to-Use Projectors

At first glance you'll see that Panasonic's new projectors look different from all the others. And when you start using one, you'll see that appearance isn't the only difference.

For example, there's the superior ease of use you get with Panasonic's Auto Setup. Just aim the projector at the screen, press a button, and let the projector make all the adjustments. There's also a large-diameter, extra-short-throw lens that delivers big, bright images even in rooms where space is tight. And Panasonic's new projectors offer a host of other functions that make it easy to deliver a great presentation.

Smart design, intelligent functions. That's what's different about Panasonic's new projectors.

One-Touch Auto Setup



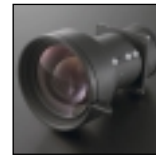
One-Touch Auto Setup provides automatic adjustments, from phasing to dot clocks, and from vertical sizing to horizontal blocking. It includes keystone correction and RGB input signal selection. A newly developed built-in gravity sensor detects the projector angle relative to the floor (up to 30 degrees), then corrects for keystone distortion accordingly. A new IC also minimises picture degradation. The user simply presses the Auto Setup button, and the image is automatically tuned and adjusted for optimal viewing.



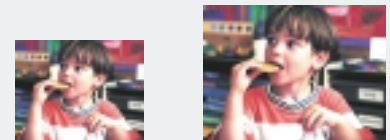
Before auto setup

After auto setup

Extra Short-Throw Lens



Each model is equipped with a large-diameter, extra short-throw lens that shortens the necessary projection distance by 25%. Conventional projectors often have to be positioned in the middle of the meeting table, with considerable distance between the lens and the screen. The shorter projection distance of the new Panasonic models saves space, allowing the



Conventional

Panasonic

Panasonic projectors provide larger, brighter images than conventional models do at the same projection distance.

PT-L711U

- 1400 ANSI lumens
- XGA (UXGA max.) resolution
- Micro Lens Array (MLA)

PT-L701U

- 1000 ANSI lumens
- XGA (UXGA max.) resolution

PT-L501U

- 1100 ANSI lumens
- SVGA (SXGA max.) resolution



projector to be placed at the front of the table. This convenient feature allows users to give comfortable presentations with large, easy-to-see images even in small rooms.

Quiet Cooling Fans—Only 28 dB

Four new quiet-design cooling fans greatly reduce operating noise to 28 dB* in Low power mode. A rotary air outlet louver lets the user control the direction of exhaust air and aim leakage light away from the audience's eyes.

* Measurement based on ISO7779.

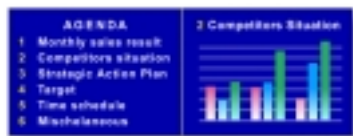
2-Mode Lamp Operation

The user can select from Standard and Low lamp power modes. Designed for use in dark rooms, the Low mode uses a lower lamp power that minimises energy consumption and lengthen the lamp life (2000 hours in Standard mode and 3000 hours in Low mode).

* Brightness is reduced 20% in low mode.

Unique Index Window

Any image in the presentation, RGB or video input, can be frozen, stored in memory, and displayed on the left side of the screen as an Index Window, while display of subsequent images continues on the right. This can make presentations much easier to understand. For example, the outline of a plan can be displayed in the Index Window to the left, while details are displayed to the right. This achieves a multi-window effect from a single presentation source, with no special preparations necessary.



Index window (frozen image)

Normal window

Attractive Styling

The stylish design helps to enhance the presentation, creating a positive impression the moment the projector is set in place. The footprint is a compact A4 size, and the unit weighs only 3.8 kg (8.4 lbs.). The design is practical, too, with a protrusion-free body that makes carrying easy. The PT-L711U comes in silver cabinet, and the PT-L701U and PT-L501U are available in



The PT-L701U and PT-L501U come in pearl green and dusty rose with limited availability.

attractive blue silver.

DTV-Ready Design

These projectors accommodate all major digital TV formats. The PT-L711U and PT-L701U are the first ultra-portable projectors to include a Digital Cinema Reality circuit, which greatly improves viewing quality from video input.

Two RGB Inputs

For greater connection flexibility, two RGB input terminals are provided.

10-Bit Digital Gamma Correction

The gamma correction circuitry featured on the PT-L711U and PT-L701U optimises the non-linear imaging characteristics of the LCD panels. Far superior to conventional analogue gamma processing, this circuitry delivers naturally vibrant colors with smooth shading and image gradation.

High Resolution and Intelligent Image Resizing

The PT-L711U and PT-L701U offer native XGA resolution (UXGA max.). The PT-L501 supports native SVGA resolution (SXGA max.). When displaying images of other types, the signals are expanded or compressed through a digital processing system. This assures smooth outlines and outstanding picture definition with all types of images.

Ultrahigh Brightness



The 160-W UHM™ lamp provides a powerful 1400 ANSI lumens for the PT-L711U, 1000 ANSI lumens for the

PT-L701U and 1400 ANSI lumens for the PT-L711U which features the Micro Lens Array (MLA) for its extra brightness.

Note: Brightness is measured in compliance with "Guidelines for LCD Projector Measuring Procedures and Measuring Conditions" by Japan Business Machine Makers Association (JBMA). UHM is a trademark of Matsushita Electric Industrial Co., Ltd.

Other Important Features

- RGB signal input indication
- Optional wide conversion lens (ET-LEC701) shorten the throw distance by 12%
- 9x digital zoom
- Card-type remote control
- Compatible with six video systems: NTSC, M-NTSC, PAL, PAL-M,



RGB indicator



ET-LEC701 wide conversion lens

Optional full-function remote control ET-RM100 is also available.



Supplied card-type remote



The main unit has the storage space for the supplied card-type remote.

PAL-N, SECAM

- Component video signal compatibility: 1080i, 720P, 480P, 480i, 625i
- S-Video compatibility
- Full 16.7-million color palette
- 3-Dimensional Y/C separation for NTSC signal
- RS-232C computer interface
- Ceiling mount capability (optional)
- Mute/freeze for video and RGB
- Selectable 7-language on-screen menu (English, German, French, Spanish, Italian, Chinese, Japanese)
- VGA expansion on/off selectable
- Video expansion on/off selectable
- 4:3/16:9 screen aspect ratio selectable
- RGB input indicator
- Rear screen projection
- Universal AC power supply (auto-voltage: 100 to 240 V)



Top view

Specifications

Power supply:	100–240 V AC, 50/60 Hz
Power consumption:	240 W (standby mode*: 5 W) * with fan stopped.
Color system:	NTSC/M-NTSC/SECAM/PAL/ PAL-M/PAL-N
Scanning frequency:	
RGB	
PT-L711U/L701U:	fH 15–97 kHz fV 50–120 Hz
PT-L501U:	fH 15–81 kHz fV 50–100 Hz
YPbPr:	480i: fH 15.7 kHz, fV 59.9 Hz 625i: fH 15.6 kHz, fV 50.0 Hz 480p: fH 31.5 kHz, fV 59.9 Hz 720p: fH 45 kHz, fV 60.0 Hz 1080i: fH 33.75 kHz, fV 60.0 Hz
Video/S-Video:	PAL/PAL-N/SECAM: fH 15.6 kHz, fV 50.0 Hz PAL-M/NTSC/M-NTSC: fH 15.7 kHz, fV 59.9 Hz
LCD panel:	0.9" (diagonal) polysilicon TFT LCD panels (x 3) Active matrix
Drive method:	
Micro Lens Array (MLA):	Featured on the PT-L711U only
Pixels:	
PT-L711U/L701U:	786,432 (1,024 x 768) x 3
PT-L501U:	480,000 (800 x 600) x 3
Pixel configuration:	Stripe
Screen aspect ratio:	4:3
Lens:	Manual zoom/focus lens (1:1–1:1.3), F 1.8–2.1, f 28.7–36.0 mm AC 160 W UHM™ lamp Full color (16,777,216 colors)
Lamp:	
Colors:	
Brightness:	
PT-L711U:	1400 ANIS lumens
PT-L701U:	1000 ANIS lumens
PT-L501U:	1100 ANIS lumens
Contrast ratio:	
PT-L711U:	300:1
PT-L701U:	350:1
PT-L501U:	200:1

Resolution:	
PT-L711U/L701U:	1024 x 768 pixels
RGB:	1024 x 768 pixels
Video:	760 TV lines
PT-L501U:	
RGB:	800 x 600 pixels
Video:	600 TV lines
Screen size:	40"–300" diagonal (aspect ratio: 4:3) 43.3 85.0
Lens shift:	9:1 (fixed)
Keystone correction range:	±30° max., vertically
Installation:	Ceiling/desk, front/rear (menu selection)
Built-in speaker:	
Size:	28 mm (1.1") round type
Output power:	1 W x 2 (stereo)
Terminals:	
RGB1/YPbPr in:	D-sub HD 15-pin
RGB2/YPbPr in:	D-sub HD 15-pin
S-Video in:	Mini DIN 4-pin
Video in:	RCA jack
Audio in:	RGB: Stereo mini jack Video: RCA jack (L/R) Stereo mini jack
Audio out:	D-sub 9-pin
RS-232C:	Kensington MicroSaver Security System
Security lock:	65.5 81.6 68.7 85.0
Dimensions (W x H x D):	233 x 98 x 330 mm (9-3/16" x 3-7/8" x 12-15/16")
Weight:	3.8 kg (8.4 lbs.)
Operating temperature:	0°–40°C (32°–104°F)
Operating humidity:	20%–80% (no condensation)
Supplied accessories:	Remote control unit, Batteries for remote control unit, Power cord, RGB cable, AV cable
Optional accessories:	Replacement lamp unit: ET-LA701 Ceiling mount bracket: ET-PK701 Full function wireless remote control: ET-RM100 Wide conversion lens: ET-LEC701



Terminals

Projection setting example

Projection size*	with supplied lens		with ET-LEC701 (option)	
	with	without	with	without
40 inches	118 – 151 cm	(3.9' – 5.0')	103 – 131 cm	(3.4' – 4.3')
80 inches	243 – 308 cm	(8.0' – 10.1')	213 – 271 cm	(7.0' – 9.0')
120 inches	368 – 465 cm	(12.7' – 15.3')	323 – 410 cm	(10.6' – 13.5')
160 inches	492 – 622 cm	(16.1' – 20.4')	434 – 549 cm	(14.2' – 18.0')
200 inches	617 – 779 cm	(20.2' – 25.6')	544 – 688 cm	(17.8' – 22.6')
240 inches	742 – 936 cm	(24.3' – 30.7')	655 – 827 cm	(21.5' – 27.1')
300 inches	929 – 1172 cm	(30.5' – 38.5')	820 – 1036 cm	(26.9' – 34.0')

* diagonally

Compatible Signals

PT-L711U/L701U					
VGA 400	fH	fV	MXGA	fH	fV
640 x 400	31.5	70.1	1152 x 864	64.0	71.2
				67.5	75.0
VGA 480	fH	fV			
640 x 480	31.5	59.9		76.7	85.0
	37.9	72.8	Mac 21"	fH	fV
	37.5	75.0	1152 x 870	68.7	75.1
	43.3	85.0			
			SXGA	fH	fV
Mac 13"	fH	fV	1280 x 1024	52.4	50.0
640 x 480	35.0	66.7		64.0	60.0
				72.3	66.3
SVGA	fH	fV			
800 x 600	32.1	51.1		78.2	72.0
	35.2	56.3		80.0	75.0
	37.9	60.3	1280 x 1024i	46.4	86.9
	48.1	72.2		47.6	89.1
	46.9	75.0	UXGA	fH	fV
	53.7	85.1	1600 x 1200	75.0	60.0
				87.5	70.0
Mac 16"	fH	fV		93.8	75.0
832 x 624	49.7	74.6			
XGA	fH	fV	Video/S-Video	fH	fV
1024 x 768	48.4	60.0	PAL/PAL-N/SECAM		
	56.5	70.1		15.7	50.0
	60.0	75.0	NTSC/M-NTSC/PAL-M		
	65.5	81.6		15.6	59.9
	68.7	85.0	YPbPr	fH	fV
	80.0	100.0	480i	15.7	59.9
	96.7	120.0	625i	15.6	50.0
1024 x 768i	35.5	87.0	480p	31.5	59.9
Mac 19"	fH	fV	720p	15.0	60.0
1024 x 768	60.2	74.9	1080i	33.75	60.0

fH : Horizontal frequency (kHz)
fV : Vertical frequency (Hz)

The display resolution of the PT-L711U and PT-L701U is 1024 x 768 dots. If the display resolution indicated in the above data does not match this resolution, the input signal will be converted to 1024 x 768.

PT-L501U					
VGA 400	fH	fV	Mac 19"	fH	fV
640 x 400	31.5	70.1	1024 x 768	60.2	74.9
VGA 480	fH	fV	MXGA	fH	fV
640 x 480	31.5	59.9	1152 x 864	64.0	71.2
	37.9	72.8		67.5	75.0
	37.5	75.0	SXGA	fH	fV
	43.3	85.0	1280 x 1024	52.4	50.0
Mac 13"	fH	fV		64.0	60.0
640 x 480	35.0	66.7	Video/S-Video	fH	fV
			PAL/PAL-N/SECAM		
SVGA	fH	fV		15.7	50.0
800 x 600	32.1	51.1		15.6	59.9
	35.2	56.3	NTSC/M-NTSC/PAL-M		
	37.9	60.3		15.6	59.9
	48.1	72.2	YPbPr	fH	fV
	46.9	75.0	480i	15.7	59.9
	53.7	85.1	625i	15.6	50.0
Mac 16"	fH	fV	480p	31.5	59.9
832 x 624	49.7	74.6	720p	15.0	60.0
			1080i	33.75	60.0
XGA	fH	fV			
1024 x 768	48.4	60.0			
	56.5	70.1			
	60.0	75.0			
	65.5	81.6			
	68.7	85.0			
	80.0	100.0			
1024 x 768i	35.5	87.0			

fH : Horizontal frequency (kHz)
fV : Vertical frequency (Hz)

The display resolution of the PT-L501U is 800 x 600 dots. If the display resolution indicated in the above data does not match this resolution, the input signal will be converted to 800 x 600.

Panasonic

Panasonic is the brandname of Matsushita Electric.

Panasonic Broadcast & Television Systems Company
Presentation Systems Group
(800) 528-8601 (product code 28)
www.panasonic.com/presentations

Headquarters
3330 Cahuenga Blvd. West
Los Angeles, CA 90068
(323) 436-3641

Regional Sales Offices
West
11509 Bliss Cochrane Rd.
Gig Harbor, WA 98329
(253) 884-7643

6095 Dubarry Court
Rohnert Park, CA 94928
(707) 584-7189

Central
4838 Windsor Prairie Rd.
DeForest, WI 53532-0382
(608) 846-4778

East
159 Whiteland Hunt Rd.
Downingtown, PA 19335
(610) 269-8369

Weights and dimensions shown are approximate. Specifications subject to change without notice. This product may be subject to export control regulations. UHM is a trademark of Matsushita Electric Industrial Co., Ltd. PS/2, VGA and XGA are trademarks of International Business Machines Corporation. Macintosh is a registered trademark of Apple Computer, Inc. SVGA is a registered trademark of the Video Electronics Standards Association. Windows is a registered trademark of Microsoft Corporation. All other trademarks are the property of the various trademark owners. Projection images simulated.