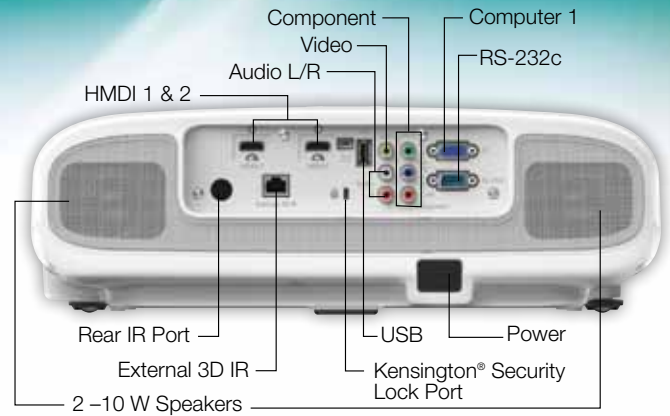


PowerLite® Home Cinema 3010e

Home Theater Projector



Product Name	Product Code	UPC
PowerLite Home Cinema 3010e	V11H421020	0 10343 88508 0
Genuine EPSON Lamp	V13H010L68	0 10343 88652 0
Replacement Air Filter	V13H134A38	0 10343 88654 4
3D Glasses	V12H483001	0 10343 88657 5

Specifications

Projection System
EPSON 3LCD, 3-chip technology

Projection Method
Front / Rear / Ceiling mount

Product Color
White and Gray

Driving Method
EPSON Poly-silicon TFT Active Matrix, 0.61-inch wide panel with MLA

Projected Output
HD, 2D, 3D, 1080p

Pixel Number
2,073,600 dots (1920 x 1080) x 3

Color Light Output¹
2200 lumens

White Light Output¹
2200 lumens (ISO 21118 Standard)

Aspect Ratio
Native 16:9 widescreen (4:3 resize)
Compatible with 4:3 and 2.35:1 video formats with Normal, Full or Zoom Modes

Native Resolution
Native 1080p (1920 x 1080)

Resize
16:10, 4:3

Lamp Type
E-TORL 230 W UHE

Lamp Life
Up to 5000 hours² (Eco mode)
Up to 4000 hours² (Normal mode)

Throw Ratio Range
1.32 – 2.15

Size (projected distance)
30" – 300"

Keystone Correction
Vertical: ± 30 degrees (Auto)
Horizontal: ± 30 degree (Slide bar)

Contrast Ratio
Up to 40,000:1

Color Reproduction
Full-color (1.7 billion colors)

Color Processing
Full 10 bit (Digital Only)

Projection Lens

Type
Manual Focus / Manual Zoom

F-number 1.51 – 1.99

Focal Length
18.2 – 29.2 mm, widescreen image size (projected distance): 100" diagonal (wide: 9.7' – tele: 15.7')

Lens Shift NA

Zoom Ratio Manual 1.6

Other

Display Performance
1920 x 1080 native 1080p; HD, 2D, 3D

Color Modes
2D: Dynamic, Living room, Natural, Cinema, Auto
3D: 3D Dynamic, 3D Cinema

Input Signal
DVD region code 1
Composite: NTSC / NTSC4.43 / PAL / M-PAL / N-PAL / PAL60 / SECAM
Component: 480i / 576i / 480p / 576p / 720p / 1080i / 1080p
HDMI: TMDS
HD-DVD and Blu-ray® (external source only)

Terminal Inputs
RCA (composite), 3 RCA (component), 2 RCA (1 audio L/R) stereo, 1 VGA D-sub 15 pin (computer input), USB Type A, USB Type B (service only), 2 x HDMI, RS-232c

Terminal Outputs
RJ-45 (external 3D emitter)

Video Compatibility
2D: WXGA, SXGA, XGA, SVGA, VGA;
3D: HDTV750p, HDTV1125i, HDTV1125p

Computer Compatibility
PC, Mac®

Speakers
Two integrated 10 W stereo speakers

Audio
DTS Digital Surround and Dolby® Digital

Media Format
16:9

Operating Temperature
5 °C to 35 °C <41 °F to 95 °F>

Power Supply Voltage
100-240 V AC +/- 10% , 50/60 Hz

Other (continued)

Power Consumption
100 – 240 V AC 50/60 Hz 3.7 – 1.7 A

Fan Noise 24 – 32 dB

Security Kensington Security Lock Port

Dimensions (W x D x H)

Including feet 16.6" x 14.4" x 5.5"
Excluding feet 16.6" x 14.4" x 5.4"
Weight 13.3 lb

Remote Control

Features
Front and rear directional

Operating Angle
± 30 degrees

Operating Distance
32 feet (10 meters)

WirelessHD Transmitter

Compatible with: EPSON PowerLite Home Cinema 3010e and Home Cinema 5010e 3D projectors

Specifications
Power supply
AC adapter, 100-240 VAC 50/60 Hz 5V2A Wall Mount type

Power Consumption
5 V, 1.1 A

Operating Temperature
41 – 95 °F

Interface
HDMI Type A female

Dimensions 2.4" x 6.2" x 2.4"
Weight 7.5 oz.

Parental Controls

Power Button Lock
Hinders projector from being turned on without parental supervision

Whats in the Box

PowerLite Home Cinema 3010e projector, power cord, two HDMI cable clamps, WirelessHD transmitter with AC adapter, remote control with AA batteries, CD ROM with user guide link

Optional Accessories

Genuine EPSON lamp	V13H010L68
Replacement air filter	V13H134A38
3D glasses	V12H483001
External 3D IR emitter	V12H484001
Projector ceiling mount	CHF1000
Remote control	1557492
PixiePlus control system for EPSON projectors	ELPSP10
Belkin Pro Series VGA / SVGA cable – 6 ft	F3H982-06
Belkin Pro Series VGA / SVGA cable – 10 ft	F3H982-10
Belkin Pro Series VGA / SVGA cable – 25 ft	F3H982-25
Belkin PureAV HDMI audio video cable – 3 ft	AV22300-03
Belkin PureAV HDMI audio video cable – 6 ft	AV22300-06
Belkin PureAV HDMI audio video cable – 12 ft	AV22300-12
Kensington Security Lock	ELPSL01
Repair/Exchange 1-year extended service plan	EPPSNVHTRB1
Repair/Exchange 2-year extended service plan	EPPSNVHTRB2

Packaging Specifications

Projector
19.8" x 17.3" x 12.2" inches (W x D x H)
Weight 18.75 lb

Genuine EPSON Lamp
5.5" x 5.1" x 5.6" (W x D x H)
Weight 0.70 lb

Air Filter
6.0" x 3.3" x 1.7" (W x D x H)
Weight 0.10 lb

Ceiling Mount
13.0" x 13.4" x 4.3" (W x D x H)
Weight 6.40 lb

3D Glasses
3.0" x 8.8" x 3.2" (W x D x H)
Weight 0.30 lb

3D Emitter
3.0" x 5.8" x 2.5" (W x D x H)
Weight 0.40 lb

1 Color and white light output will vary depending on mode selected. White light output measured using ISO 21118 standard.
2 Data source: ProjectorCentral.com Jan. 2011. Average of 1038 shipping models for which manufacturers provided lumens and total power data, all resolutions and brightness levels.
3 Lamp life will vary depending upon mode selected, environmental conditions and usage. Lamp brightness decreases over time.
4 See our website for convenient and reasonable recycling options at www.epson.com/recycle
5 SmartWay is an innovative partnership of the U.S. Environmental Protection Agency that reduces greenhouse gases and other air pollutants and improves fuel efficiency.
6 The Split Screen feature can only use one digital input source at a time. The other source must be an analog source (PC/Component or Composite video). However, two different analog input sources can be used at the same time.
7 Overnight shipping not available in all areas. Epson Value Series has a two-business-day exchange program. Road Service orders must be in by 3 p.m. Eastern Time for two-business-day delivery.

Epson America, Inc.
3840 Kilroy Airport Way, Long Beach, CA 90806

Epson Canada Limited
185 Renfrew Drive, Markham, Ontario L3R 6G3

www.epson.com
www.epson.ca



PowerLite[®] Home Cinema 3010e

HOME THEATER PROJECTOR



2D and 3D, Full HD 1080p Home Theater Projector with Integrated Speakers and WirelessHD.

The PowerLite Home Cinema 3010e with WirelessHD, brings the power of 3D right to your living room. Immerse yourself in eye-popping 3D adventures, 2200 lumens color and white light output¹, Full HD 1080p performance and a remarkable contrast ratio of up to 40,000:1. Amazing audio with two powerful built-in 10 W stereo speakers. This high-value home theater projector also features great 2D performance. It's never been easier to entertain family and friends with a true-to-life 3D cinematic experience. Active shutter 3D glasses sold separately.

A true cinematic experience — 2D and 3D, Full HD 1080p technology puts you right in the middle of exciting, lifelike adventures

Super bright and true-to-life colors — 2200 lumens color and white light output¹, and contrast ratio of up to 40,000:1

Rich, vibrant color and reliable performance — 3LCD, 3-chip technology



PowerLite® Home Cinema 3010e

HOME THEATER PROJECTOR

The best-selling projectors in the world.

Epson offers a wide range of high-quality projectors to meet almost any need. Built with image quality and reliability in mind, EPSON® high-definition projectors take home theater entertainment to a whole new level, featuring color and detail that's sure to win rave reviews from friends and family alike. With the vivid realism of EPSON 3LCD technology, these projectors will make your home the hottest ticket in town.



3LCD technology — for quality and color that's beyond amazing

- 3 chips for full-time, vibrant color
- 25% less electricity required per lumen of brightness when compared to 1-chip DLP projectors²
- Over 20 years of road-tested reliability built into every projector



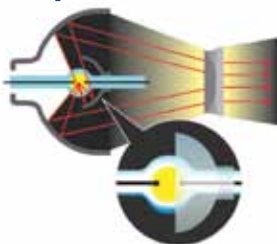
Amazing color and light output

The PowerLite Home Cinema 3010e delivers 2200 lumens of color light output and 2200 lumens of white light output¹ for rich, colorful images. Whether you're projecting images with deep, dark colors or bright whites, you get consistent light output.



Energy-efficient E-TORL® lamp exclusively from Epson

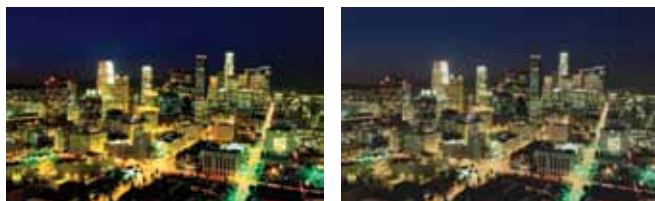
- Delivers more lumens per watt and lasts up to 5000 hours³
- Minimizes both light diffraction and light leakage
- Maximizes your viewing time, while minimizing your costs



▲ E-TORL lamp

C²Fine™ technology delivers a higher contrast ratio

C²Fine offers smooth, uniform images with exceptional contrast for better image quality. Based on this new phase-compensation technology, light leakage is eliminated, and, when combined with the auto iris, this technology allows for contrast ratios of up to 40,000:1.



▲ With C²Fine

▲ Without C²Fine

Epson — 3LCD

Other — DLP



High color light output



Low color light output

Actual photographs of images taken from two competing projectors run in default mode. Price, resolution and brightness (white light output) are the same for both projectors.

Advanced Auto Iris technology

EPSON Auto Iris adjusts the aperture to provide optimum contrast and brightness for each scene

Better Products for a Better Future™

For more information on Epson's environmental programs, go to eco.epson.com

Eco Features

- RoHS compliant
- Recyclable product⁴
- Epson America, Inc. is a SmartWaySM Transport Partner⁵





Amazing 3D performance

Bright 3D technology

Enjoy thrilling 3D adventures right in the comfort of your living room. Featuring Bright 3D Drive technology, Epson's 480 Hz drive system minimizes the blackout time of 3D glasses and provides great brightness of 3D images.

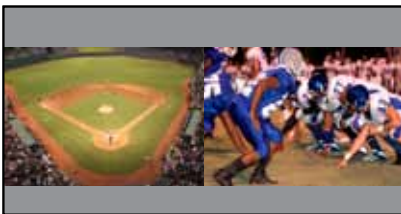


WirelessHD enabled

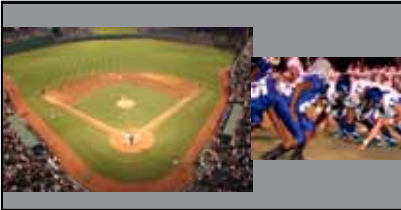
- Transmitter included and receiver built-in to the projector to transmit uncompressed high-definition video over short distances
- Supports the standard promoted by the WirelessHD consortium

Split Screen⁶ feature

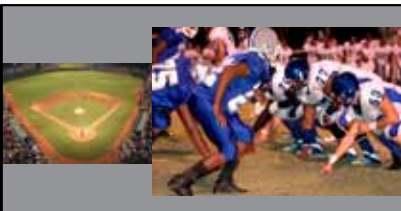
Project two images (video or still) side-by-side from two different sources simultaneously in 2D mode. Choose from three layout options. You can swap the images, chose the source for the audio and even display closed captioning if the source signal includes it.



Layout Option 1:
50-50% Split Screen



Layout Option 2:
Main image on left



Layout Option 3:
Main image on right

PowerLite Home Cinema 3010e Features

- **A true cinematic experience** — 2D and 3D Full HD 1080p technology puts you right in the middle of exciting, lifelike adventures
- **Super bright and saturated colors** — 2200 lumens color and white light output¹, and contrast ratio of up to 40,000:1
- **Rich, vibrant color and reliable performance** — 3LCD, 3-chip technology
- **WirelessHD enabled** — transmit and receive HD 1080p content wirelessly over short distances
- **Captivating sound** — two built-in 10 W stereo speakers for amazing audio
- **Sleek design** — fits in any setting
- **Split screen feature** — project two images side-by-side from two different sources in 2D mode
- **Outstanding support** — two-year limited warranty; two-business-day replacement with free shipping*
- **3D Glasses** — sold separately

New innovative horizontal keystone correction

- Create perfectly rectangular images from unique positioning of the projector
- Horizontal (+/- 30 degrees) keystone correction for the ultimate in positioning flexibility
- Project images without having to put a stand or table in the center of the room