

LC-HDT2000

Auditorium Large Venue projector

EIKI
Projectors & Beyond



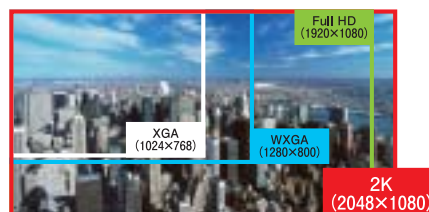
15000 Lumens
2K 2048x1080



Outstanding Features

- Brightness 15000 lumens with 4-Lamp mode, 3000 : 1 Contrast Ratio.
- Native 2K (2048 x 1080) Resolution. 2K ~ VGA and Mac compatible.
- "3 LCD+One" imaging system delivers more sophisticated color.
- Smoke Resistance Unit (Option).
- Active Maintenance Cleaner (AMC).
- Robust design.
- Hot Swappable Lamp System.
- 10 bit color processing for superior color reproduction.
- Multi screen installation.
 - Constant Brightness function.
 - Color Matching function.
 - Edge Blending function.
- Mechanical shutter for true black screen.
- Picture in Picture & Picture by Picture.
- Corner Keystone Correction.
- Optional Lens (11 types).
- Optional Boards (4 types).

■ Full HD 2K



■ Active Maintenance Cleaner (AMC)

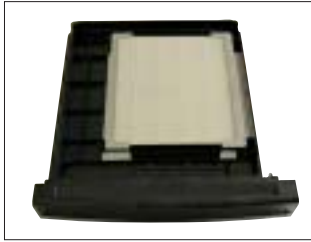


■ Hot swappable quad lamps (from each cover on the top cabinet)



LC-HDT2000 Auditorium Large Venue projector

Smoke Resistance Unit / Filter (Option)



Smoke Resistance Unit (Included Smoke Filter)
AH-38321 (POA-SR-160)



Smoke Resistance Filter
AH-38323 (POA-FIL-160)

Lenses (Option)

Lens Type	Part No.	F value	Focal Length	Image Size (Inch)
On Axis Short Fixed	AH-32022 (LNS-W03E)	F 2.6	f = 30	40 ~ 600
On Axis Short Fixed	AH-21012 (LNS-W01Z)	F 2.5	f = 45	40 ~ 600
Short Zoom	AH-32601 (LNS-W06)	F 2.3 ~ 2.8	f = 46 ~ 58	40 ~ 600
Short Zoom	AH-21202 (LNS-W02Z)	F 2.5 ~ 2.9	f = 52 ~ 68	40 ~ 600
Short Zoom	AH-32401 (LNS-W04)	F 1.7 ~ 2.3	f = 58 ~ 76	40 ~ 600
Standard Zoom	AH-21401 (LNS-S04)	F 2.0 ~ 2.6	f = 76 ~ 98	60 ~ 600
Standard Zoom	AH-22051 (LNS-S03)	F 1.7 ~ 2.6	f = 97 ~ 131	100 ~ 600
Mid Zoom	AH-22221 (LNS-M02)	F 2.1 ~ 2.7	f = 125 ~ 162	60 ~ 600
Long Zoom	AH-21092 (LNS-T02E)	F 2.0 ~ 2.9	f = 158 ~ 221	40 ~ 600
Long Fixed	AH-21031 (LNS-T01)	F 2.0	f = 253	40 ~ 600
Long Zoom	AH-32581 (LNS-T02)	F 2.2 ~ 2.5	f = 224 ~ 325	40 ~ 600

Slot Boards (Option)

Name	Part No.	Terminal
DVI/D-sub15 Board	AH-72223 (POA-AMD23ADI)	DVI-D x1 , D-sub 15 x1
5-BNC/VIDEO Board	AH-72225 (POA-AMD25VD3)	5BNC x1 , S-VIDEO x1
SD/HD-SDI Board	AH-72217 (POA-AMD17SDID)	BNC x3
Dual-Link SDI Board	AH-72722 (POA-AMD22DIDL)	BNC x4

Terminal/Remote control



Hg
Lamp Contains Mercury.
Do not put in trash.
Dispose-of-as Hazardous
Waste, according to the
laws in your jurisdiction.

Specifications

Screen Brightness (ANSI)	up to 15000 lumens (with AH-22051)
Illumination Uniformity	90 %
Color Reproduction	10 bit (1.07 billion colors)
Contrast Ratio	3000 : 1
Projection Lamp	380 W NSHA x 4
Estimated Lamp Life	3000 / 2000 H (Eco 1,2 / Normal mode)
Imaging System	1.64" Inorganic Polysilicon active matrix TFT Panels x 3 with proprietary Color Control Device (3 LCD + One)
Aspect Ratio	About 17 : 9
Total Pixels	2048 x 1080 x 3
Lens	Not Included—choose from a selection of optional lenses
Image Diagonal	100 ~ 600 in. *1
Image Width	2.21 ~ 13.26 m *1
Throw Distance (Wide ~ Tele)	5.8 ~ 48.0 m *1
Front Elevation / Mximum pitch	3° / 360° Pitch (including normal, inverted, up, down)
Keystone Correction	Vertical : ± 30°, Horizontal : ± 30°
Scanning Frequency	Auto : H Sync. 15 ~ 120 kHz : V Sync.48 ~ 120 Hz
Dot Clock	230 MHz (Analog)
Image Orientation	Normal, Reversed, Inverted
Wired / Wireless Network Port	RJ-45
Remote Projector / Mouse Control	Wireless / Wired x 1
Control Port (for RS-232 control)	Dsub 9 pin x 2 (in / out)
Others	Mini jack x 1 (for Wired R / C)
Computer Native Resolution	2048 x 1080
Computer : Compatibility	WUXGA*2, UXGA*2, WSXGA+, SXGA+, SXGA, WXGA+, WXGA, XGA, SVGA, VGA, Mac

Computer : Formats	2048 x 1080 and 1920 x 1200 through 640 x 480
Video : System Compatibility	NTSC, PAL, SECAM, NTSC 4.43, PAL-M&N
Video : Compatibility	2 K- 24 / 25 / 30 p, 2 K- 24 / 25 / 30 psf, 1080 - 24 / 25 / 30 / 48 / 50 / 60 p, 1080 - 24 / 25 / 30 psf, 1080-50 / 60 i, 720-50 / 60 p, 575 p, 480 p, 575 i, 480 i
Input 1	D-sub 15 (RGB) x 1 , DVI-D (HDCP) x 1, HDMI x 1 (v1.3 w / Deep Color)
Input 2	5BNC (RGBHV, Y, Pb / Cb, Pr / Cr, Video(BNC)), Mini DIN 4-pin x 1 (S-Video)
Input 3	Detachable terminal for system up
Input 4	Detachable terminal for system up
Fan Noise	48 / 51 dBA (Eco1 / Normal)
Cabinet Size (W x H x D)*3	650.0 x 349.0 x 815.0 mm
Weight	46.5 kg
Power Requirements	200 ~ 240 V AC , 50 / 60 Hz
Power Consumption	1850 / 1450 W (Normal / Eco mode) 18 W (Stand-by)
Heat	7100 BTU/hr. (1789.3 Kcal/hr.)
Electrical Safety Compliance	UL, cUL, IEC
Electromagnetic Compatibility	FCC, ClassB, CE Mark
Security Facilities	PIN code lock , Logo PIN code lock , Kensington lock
Operating Temperature	5 ~ 40 °C (41 ~ 104°F)
Standard Accessories	Quick reference guide , Owner's Manual (CD-ROM) , PJ Network Manager (CD-ROM) , Real Color Manager Pro. (CD-ROM) , PIN code label , AC Power Cord , Computer cable (Dsub-15 - Dsub15) , Remote Control Unit (with AAA Batteries x 2) , Lens spacer (3 types) , Light block plate (3 types) , Mounting clamp (2 types) , Lens Attachment , Remote control cable , Cable tie x 3

*1 with AH-22051 *2 compression *3 including protrusion