



**mitsubishi
ELECTRIC**

XL8U/XL4U/SL4U
MULTIMEDIA DATA/VIDEO PROJECTOR



Ultra modern, compact design

Long lamp life

Anti-theft features

**mitsubishi
ELECTRIC AUSTRALIA**

XL8U/XL4U/SL4U MULTIMEDIA DATA/VIDEO PROJECTOR

Key Features

EXCLUSIVE TO XL8U:

- Auto Vertical Keystone Correction
- Horizontal Digital Keystone Correction
- 2 Live Picture in Picture

COMMON TO ALL MODELS:

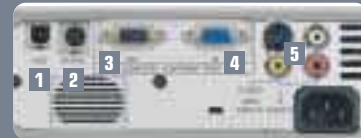
- Password Lock Function
- Short Throw Lens (XL4U/SL4U only)
- Natural Color Matrix™
- 3D Y/C digital Comb Filter & 3D Noise Reduction
- Carry bag included
- 3000hrs Lamp Life (Low Mode)*
- sRGB
- New 3D Cine View Line Doubler
- Digital Expand Zoom
- Card Type remote

System Operation Remote Control

Optional extra



To further improve operating ease, the System Operation Remote can be programmed to control DVD players and video recorders connected to the projector.



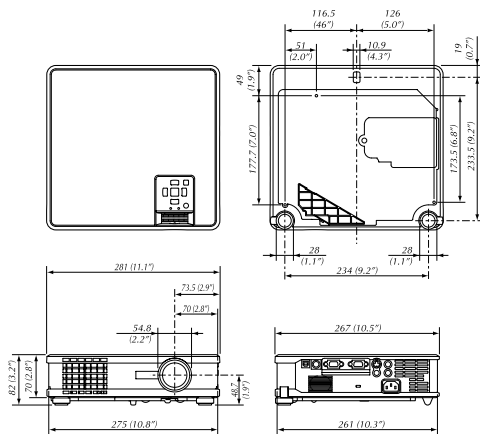
Input Terminals

- 1 Mouse terminal for USB
- 2 Serial terminal RS-232C x 1 (8 pin)
- 3 PC/Component Video output (mini D-sub 15 pin)
- 4 PC/Component Video input (mini D-sub 15 pin)
- 5 S-Video/Video/Audio input



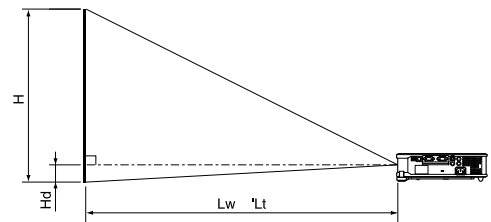
VLTXL8LP Replacement lamp

DIMENSIONS (UNIT: MM (INCH))



* Approx fig. representing average operating lifecycle

PROJECTION DISTANCE AND SCREEN SIZE



XL8U

Diagonal Size	Screen			Distance from screen		Height Projected				
	Width	Height	Max. Zoom	Min. Zoom	Image(H)					
40	102	32	81	24	61	1.5	69	1.8	2.4	6.1
60	152	48	122	36	91	2.2	105	2.7	3.6	9.1
80	203	64	163	48	122	3.0	140	3.6	4.8	12.2
100	254	80	203	60	152	3.7	176	4.5	6.0	15.2
150	381	120	305	90	229	5.6	265	6.7	9.0	22.9
200	508	160	406	120	305	7.5	355	9.0	12.0	30.5
250	635	200	508	150	381	9.4	444	11.3	15.0	38.1
300	762	240	610	180	457	11.3	—	—	18.0	45.7

XL4U/SL4U

Diagonal Size	Screen			Distance from screen		Height Projected				
	Width	Height	Max. Zoom	Min. Zoom	Image(H)					
40	102	32	81	24	61	1.3	60	1.5	2.4	6.1
60	152	48	122	36	91	2.0	81	2.3	3.6	9.1
80	203	64	163	48	122	2.8	107	3.1	4.8	12.2
100	254	80	203	60	152	3.2	126	3.9	6.0	15.2
150	381	120	305	90	229	4.8	191	5.8	9.0	22.9
200	508	160	406	120	305	6.5	255	7.8	12.0	30.5
250	635	200	508	150	381	8.1	319	9.1	15.0	38.1
300	762	240	610	180	457	9.7	—	—	18.0	45.7

Specifications

Model	XL8U	XL4U	SL4U
Display technology	0.7" Polysilicon panel x 3 (with MLA)	0.7" Polysilicon panel x 3	0.7" Polysilicon panel x 3
Resolution	1024 x 768 (total 2,359,296 pixels), 600 video lines	1024 x 768 (total 2,359,296 pixels), 600 video lines	800 x 600 (total 1,440,000 pixels), 600 video lines
Brightness	2000 lm (Maximum)	1500 lm (Maximum)	1700 lm (Maximum)
Colour	16,770,000 colours	16,770,000 colours	16,770,000 colours
Zoom / focus	Manual control (zoom ratio 1.2:1)	Manual control (zoom ratio 1.2:1)	Manual control (zoom ratio 1.2:1)
Picture size	40" ~ 300" (100" ~ 3.7m)	40" ~ 300" (100" ~ 3.2m)	40" ~ 300" (100" ~ 3.2m)
Source lamp	180W / 2000hrs (normal mode), 160W / 3000hrs (low mode)	180W / 2000hrs (normal mode), 160W / 3000hrs (low mode)	180W / 2000hrs (normal mode), 160W / 3000hrs (low mode)
Computer compatibility	VGA® ~ SXGA® (640 x 400 ~ 1280 x 1024) True: 1024 x 768, Sync on green available	VGA® ~ SXGA® (640 x 400 ~ 1280 x 1024) True: 1024 x 768, Sync on green available	VGA® ~ XGA® (640 x 400 ~ 1024 x 768) True: 800 x 600, Sync on green available
Video compatibility	NTSC / NTSC 4.43 / PAL (including PAL-M, N) SECAM / PAL 60 / Component Video (DVD / HDTV) (480i, 576i, 480p, 576p, 720p, 1080i), SCART (RGB + 1V sync)	NTSC / NTSC 4.43 / PAL (including PAL-M, N) SECAM / PAL 60 / Component Video (DVD / HDTV) (480i, 576i, 480p, 576p, 720p, 1080i), SCART (RGB + 1V sync)	NTSC / NTSC 4.43 / PAL (including PAL-M, N) SECAM / PAL 60 / Component Video (DVD / HDTV) (480i, 576i, 480p, 576p, 720p, 1080i), SCART (RGB + 1V sync)
Input terminals	PC: mini D-sub 15 pin x 1, Video: RCA + S-Video x 1, Audio: RCA (L, R) x 1	PC: mini D-sub 15 pin x 1, Video: RCA + S-Video x 1, Audio: RCA (L, R) x 1	PC: mini D-sub 15 pin x 1, Video: RCA + S-Video x 1, Audio: RCA (L, R) x 1
Output terminals	RGB: mini D-sub 15 pin x 1	RGB: mini D-sub 15 pin x 1	RGB: mini D-sub 15 pin x 1
Communication terminals	RS-232C x 1 (8pin), mouse terminal for USB	RS-232C x 1 (8pin), mouse terminal for USB	RS-232C x 1 (8pin), mouse terminal for USB
Audio speaker	2 W Mono	2 W Mono	2 W Mono
Dimensions (W x H x D)	275 x 70 x 261 mm / 10.8" x 2.8" x 10.3" (Excluding all protrusions)	275 x 70 x 261 mm / 10.8" x 2.8" x 10.3" (Excluding all protrusions)	275 x 70 x 261 mm / 10.8" x 2.8" x 10.3" (Excluding all protrusions)
Weight	2.7 kg / 5.9 lbs	2.7 kg / 5.9 lbs	2.7 kg / 5.9 lbs
Power supply	AC 100 ~ 240 V / ±10%, 50/60 Hz	AC 100 ~ 240 V / ±10%, 50/60 Hz	AC 100 ~ 240 V / ±10%, 50/60 Hz

* SXGA, XGA and SVGA are registered trademarks of IBM Corporation.

* All brand names and product names are trademarks, registered trademarks or trade names of their respective holders.



MITSUBISHI ELECTRIC AUSTRALIA

Mitsubishi Electric Australia Pty. Ltd. 348 Victoria Rd, Rydalmere NSW 2116
Ph: (02) 9684 7777 Fax: (02) 9684 7208 www.MitsubishiElectric.com.au

* Specifications are subject to change without notice