

# A Powerful And Versatile Projector With A Built-In Networking System.

**ColorView**  
NATURAL COLOR MATRIX™

**sRGB**



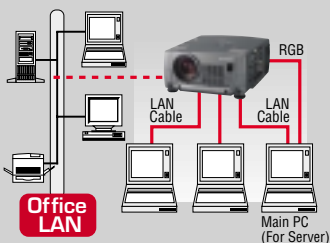
**S490U**  
COLORVIEW  
PROJECTOR



S490U with optional lenses

## SMARTHUB NETWORKING SYSTEM

The S490U has a SmartHub Networking System built-in to easily connect your computer and projector to your LAN system, or even host your own mini network for easier file access and distribution. All these conveniences with no additional hardware or software required in most cases.



The S490U ColorView™ projector from Mitsubishi is a powerful and versatile projector with superb picture reproduction and outstanding brightness that outshines any other portable projector in its class. It is one of the first projectors to be designed with a built-in SmartHub System enabling the projector to easily become a part of a local area network. With ColorView™ Natural Color Matrix, sRGB color profile and the SmartHub System available, the S490U delivers picture perfect presentations every time, virtually anywhere!

- 2600 ANSI lumens for high brightness
- Exclusive, award-winning ColorView Natural Color Matrix for rich, vivid colors
- sRGB color profile technology ensures standard, uniform color reproduction regardless of the type of display used
- Intelligent Room Illumination Sensor (IRIS®) senses room brightness and automatically adjusts the projector's contrast
- SmartHub Networking System bridges your information technology and AV convergence needs with simple and easy-to-follow instructions
- Dual lamp operations mode allows users to conserve lamp life, lower the operating temperature and noise level, extending the overall life of the projector
- Three-year parts and labor warranty, 90-day warranty on the lamp, toll-free technical support, plus a three-year Emergency Roadside Assistance (ERA) program that guarantees free replacement product shipped overnight for next business day delivery when and where available

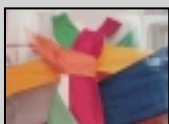




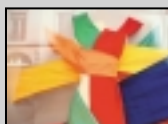
PRESENTATION PRODUCTS

## COLORVIEW™ NATURAL COLOR MATRIX

The S490U produces vivid colors that precisely match their real-life counterparts, as well as giving you the ability to precisely adjust color saturation and control color tones.



Without ColorView



With ColorView

## PRECISE COLOR REPRODUCTION WITH sRGB



Developed to ensure standard, uniform color reproduction regardless of the type of display used, sRGB color profile uses color coordinates common to all display technologies.



Actual



sRGB



Non-sRGB

## IRIS® (INTELLIGENT ROOM ILLUMINATION SENSOR)

Room illumination can have a significant effect on the quality and accuracy of color reproduction on-screen. The brighter the room, the duller the color. The S490U's built-in IRIS® automatically detects light volume and color density, automatically adjusting mid-range color tones as required for optimal color reproduction under any lighting conditions.

A change in external light makes the room brighter.

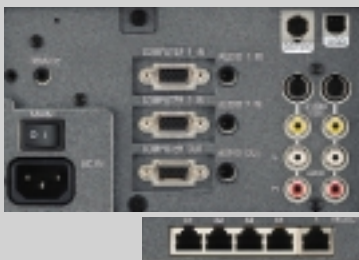


Without IRIS



With IRIS

## INPUT AND OUTPUT TERMINALS

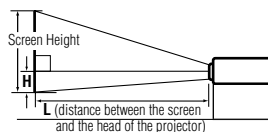


## SPECIFICATIONS

Display Technology	1.3" Polysilicon LCD panel x 3
Resolution	True SVGA 800 x 600 with compression for 1024 x 768
Brightness	2600 ANSI Lumens
Colors	16,770,000 colors
Contrast Ratio	400:1
Zoom/Focus	Electronic control (zoom ratio: 1.26 : 1)
Picture Size	40" ~ 300" diagonal (100" = 3.85 m)
Lamp	300 W SHP lamp
Computer Compatibility	VGA ~ SXGA (640 x 400 ~ 1280 x 1024), Native Resolution: 1024 x 768, Sync on green available
Video Compatibility	NTSC/NTSC 4.43/PAL (including PAL-M, N)/SECAM/PAL-60/DVD (component)/HDTV (525P, 720p, 1080i)
Input Terminals	PC1 (RGB1): mini D-sub 15 pin x 1, RGB1-B: PC2 (RGB2): mini D-sub 15 pin x 1, PC audio: stereo mini jack x 2 (3.5 mm), Video: RCA + S video x 2, Video audio: stereo RCA x 2
Output Terminals	RGB: mini D-sub 15 pin x 1, Audio (variable out): stereo mini jack x 1 (3.5 mm)
Communication Terminals	RS-232C x 1 (Direct command is available. Din 8 pin), mouse terminal for USB, wired remote terminal x 1 (3.5 mm stereo mini jack)
Audio Speaker	3 W x 2 (stereo)
Scanning Rates	Horizontal: 15 - 92 kHz, Vertical: 50 - 85 Hz, Dot clock: max. 160 MHz
Fan Noise	34 dB
Remote Control/Laser Pointer	Included with full mouse functions; can be operated wired or wireless
Power Consumption	420 W
Dimensions (W x H x D)	12 x 5.8 x 15.2" (305 x 148 x 386 mm) (excluding feet)
Weight	15.2 lbs. (6.9 kg)
Power Supply	AC100 ~ 240V / ±10%, 50/60 Hz
Networking Protocol Supported	Net BEUI® for Windows® PC, AppleTALK® for Apple Macintosh®
Safety Approvals	CSA, CSA NRT L/C, FCC Class-A
Warranty	Three-year parts and labor; 90 days on lamp. Also includes three-year Emergency Roadside Assistance program that guarantees free replacement projector shipped overnight for next business day when and where available
Accessories	Standard AC power cable; RGB cable; Mac adapter for RGB cable; RS-232C cable; Mac adapter for RS-232C cable; remote control; wired cable for remote unit; mouse adapter(PC and Mac); lens cap; and user manual Optional: User replaceable spare lamp (VLT-X500LP), ceiling mount kit (X500CM); other carrying cases and optional lenses are also available
Special Features	ColorView Natural Color Matrix; sRGB color compliance; IRIS control sensor; CineView™ Video Line-Doubler; digital keystone adjustment; power zoom and focus

For more information on the S490U or any of Mitsubishi's other projectors or presentation products, contact Mitsubishi Digital Electronics today. Detailed technical specifications available upon request.

Projector Part Number: S490U



To find the approximate distance between the projector and screen: Multiply the width of the screen x 1.8 (min.), multiply the width of the screen x 2.4 (max).  
\* Refer to the chart for recommended distances in maximum zoom and minimum zoom.

Screen Diagonal (inch)	Distance from screen (L)/(approximate)					Height Projected Image (H) (cm) (inch)
	Height (inch)	Width (inch)	Minimum zoom (WIDE) (m) (inch)	Maximum zoom (TELE) (m) (inch)	Height Projected Image (H) (cm) (inch)	
40"	24"	32"	1.5 (58")	1.9 (75")	3.0 (1.2")	
60"	36"	48"	2.3 (89")	2.9 (114")	4.6 (1.8")	
80"	48"	64"	3.0 (120")	3.9 (152")	6.1 (2.4")	
100"	60"	80"	3.8 (150")	4.9 (191")	7.6 (3.0")	
150"	90"	120"	5.8 (227")	7.3 (289")	11.4 (4.5")	
200"	120"	160"	7.7 (304")	9.8 (386")	15.2 (6.0")	
250"	150"	200"	9.7 (381")	12.3 (483")	19.1 (7.5")	
300"	180"	240"	11.6 (458")	-	22.9 (9.0")	

©2002 Mitsubishi Digital Electronics America, Inc. Standard features, options and specifications subject to change without notice.

Microsoft, Windows, and the Windows logo are registered trademarks of Microsoft Corporation. Mac and the Mac logo are trademarks of Apple Computer, Inc, registered in the U.S. and other countries. All other trademarks or registered trademarks are the property of their respective holders.



Printed on 50% recycled paper including 20% post-consumer fibers, processed chlorine free. Printed with vegetable based inks.

Mitsubishi Digital Electronics America, Inc.  
Presentation Products Division  
9351 Jeronimo Road  
Irvine, CA 92618  
Toll Free: 888-880-6351  
email: ppdinfo@mdea.me.com

Technical Support:  
Toll Free: 888-307-0309  
Email: tsupport@mdea.me.com

Canada:  
Mitsubishi Electric Sales Canada Inc.  
Information Technologies Group  
Markham, Ontario  
905-475-7728

www.mitsubishi-presentations.com