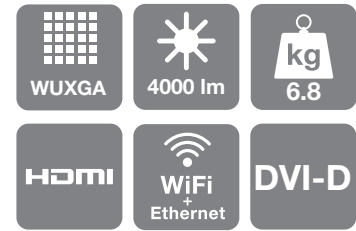


# Epson EB-G5450WU

DATASHEET



This best-in-class projector is designed and built to meet the exacting requirements of large venue installation.

Designed for large education and corporate venues, and specialist vertical markets, the projector has an equally high White and Colour Light Output (CLO) thanks to Epson's 3LCD technology. This means presentations have vivid yet natural colours even in full daylight.

EasyMP Network & Control: Monitor the status of your projector, email the administrator and set up alerts, so the projector emails the administrator in case of any issues. You can also broadcast a message to the network with the included EasyMP Network Projection software.

The projector's WUXGA format allows presenters to show a 16:10 widescreen image with image quality that exceeds Full HD resolution. Its 1080/24fps processing is ideal for projecting smoother, more fluid images when playing a film, creating up to 60 frames per second in 3-2 pulldown mode and 48 frames per second in more filmic 2-2 pulldown mode.

Product durability is assured and TCO kept to a minimum with the addition of the long-life C<sup>2</sup>Fine Inorganic LCD panel. And for low maintenance, the electrostatic filter can be cleaned or changed quickly.

Five optional lenses are available, allowing you to create the perfect projector to suit particular venues and different types of multimedia content.

## KEY FEATURES

- WUXGA resolution
- 3LCD for outstanding picture quality
- 4,000 lumens for bright daylight viewing
- Lens shift
- Straightforward installation and operation
- Wide range of connectivity options
- Low maintenance



**EPSON**  
EXCEED YOUR VISION

## PRODUCT SPECIFICATIONS

PROJECTION TECHNOLOGY	3LCD Technology 0.76 inch with MLA (C <sup>2</sup> Fine)
RESOLUTION	WUXGA – 1920 x 1200 (16:10 aspect ratio)
WHITE LIGHT OUTPUT* Normal / Eco	4000 / 3200 Lumens
COLOUR LIGHT OUTPUT* Normal / Eco	4000 / 3200 Lumens
CONTRAST	1000:1
LAMP Life (Normal / Eco) Type	2000 / 3000 hours 275W UHE
LENS	Standard Lens Optional lenses available, see Optional Lens Specifications chart for full details
CONNECTIVITY	
Video input	1 x RCA, 1 x S-Video, 1 x Component (D-sub 15-pin), 1 x HDMI, 1 x DVI-D, 1 x 5-BNC, 1 x 1-BNC
Audio input	3 x Stereo mini-jack, 1 x RCA (R/L), 1 x HDMI
Digital input	1 x HDMI, 1 x DVI-D
Computer input	1 x D-sub 15-pin (RGB), 1 x 5-BNC, 1 x DVI-D
Control input	1 x RJ-45, 1 RS-232C
Computer output	1 x D-sub 15-pin (RGB)
Audio output	1 x Stereo mini-jack
Wireless connection	1 x optional Wireless LAN Unit (802.11 a/b/g), 1 x optional Quick Wireless Connection USB Key
ADVANCED FEATURES	
Security	Security cable hole, Lens lock, Kensington lock, Password protection, Wireless LAN Unit lock
Operation EasyMP features Display	Lens shift, Split-screen function, 2-2 Pulldown, Direct Power on/off, Instant off EasyMP PC-Free, EasyMP Network Projection, EasyMP Network & Control 8 colour modes (including DICOM Simulation)
LANGUAGES	English / French / German / Italian / Spanish / Portuguese / Korean / Chinese / Russian / Dutch / Danish / Hungarian / Czech / Polish / Norwegian / Finnish / Swedish / Greek / Turkish / Arabic / Japanese / Traditional Chinese / Romanian / Slovenian / Ukrainian / Catalan / Thai
NOISE LEVEL Normal / Eco	35dB / 30dB
SOUND	1 x 7 Watt
WEIGHT	6.8kg
DIMENSIONS (W x D x H)	470 x 311.5 x 135mm
POWER CONSUMPTION Normal / Eco Standby	393W / 330W 0.47W
WARRANTY**	2 years on main unit; 1 year on lamp

\* ISO 21118 based measurement

\*\* Warranty offers are not available for all countries. Please contact your local Epson representative.

## PRODUCT LOGISTICS

PROJECTOR MODEL	<b>EB-G5450WU</b>
SKU CODE	
BARCODE	
WHAT'S IN THE BOX	Projector Standard lens Power cable Computer cable Remote control and batteries Lens cover Bundled software User's manual set
GROSS WEIGHT	10.12kg
CARTON DIMENSIONS (L x W x H)	556 x 468 x 282mm

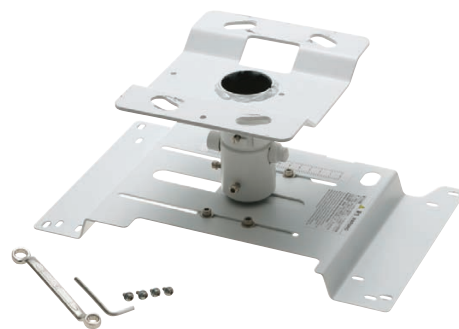
## OPTIONAL LENSES

- Standard Lens  
V12H004S05 (ELPLS05)
- Rear Projection Wide Lens  
V12H004R03 (ELPLR03)
- Middle Throw Zoom Lens 1  
V12H004M04 (ELPLM04)
- Middle Throw Zoom Lens 2  
V12H004M05 (ELPLM05)
- Long Throw Zoom Lens  
V12H004L06 (ELPLL06)

See *Optional Lens Specifications chart* for full details

## OPTIONAL ACCESSORIES

- Spare lamp  
V13H010L62 (ELPLP62)
- Air filter  
V13H134A17 (ELPAF17)
- Wireless LAN unit
- Quick Wireless Connection USB Key  
V12H005M08 (ELPAP08)
- 80-inch pull-up screen 16:10  
V12H002S24 (ELPSC24)
- Epson Desktop Visualiser
- Epson USB Visualiser  
V12H321003 (ELPDC06)
- Ceiling mount  
V12H003B22 (ELPMB22)
- Ceiling pipe 668–918mm  
V12H003P13 (ELPFP13)
- Ceiling pipe 918–1168mm  
V12H003P14 (ELPFP14)



Tailor-made ceiling mount for easy installation and security



For further information please contact your local Epson office or visit [www.epson-europe.com](http://www.epson-europe.com)

Austria 0810/20 01 13 (0,07 €/min) Belgium 070/350120 (0,1735 €/min) Czech 800/142 052 Denmark 44 50 85 85 Finland 0201 552 091  
France 09 74 75 04 04 (Cost of local call, operator charges may apply) Germany 01805/23 41 10 (0,14 €/min aus dem dt. Festnetz, Mobilfunkpreise  
abweichend. Ab 1.3.2010 Mobilfunkpreis max. 0,42 €/min) Greece 210-8099499 Hungary 06800 147 83 Ireland 01 436 7742 Italy 02-660321 10  
(0,12 €/min) Luxembourg 900/43010 (0,24 €/min) Middle East +9714 8818934 Netherlands 0900-5050808 (0,05 €/oproep + 0,15 €/min)  
Norway +47 67 11 37 00 Poland 0-0-800 4911299 (0,16 zł/min) Portugal 707 222 111 Russia (095) 777-03-55 Slovakia 0850 111 429  
South Africa (+2711) 465-9621 Spain 93 582 15 00 Sweden 0771-400135 (Mobilsamtal – 0,99 kr/min, Lokala samtal – 0,30 kr/min,  
Utländssamtal – 0,89 kr/min) Switzerland 0848 448820 (4-8 cent./min) Turkey (0212) 3360303 United Kingdom 0871 222 6702

Trademarks and registered trademarks are the property of Seiko Epson Corporation or their respective owners.  
Product information is subject to change without prior notice.

# EPSON®