



Table of Contents

Usage Notice	2
Safety Information	2
Class B emissions limits.....	2
Important Safety Instruction.....	2
Precautions.....	4
Eye Safety Warnings.....	6
Product Features	7
Introduction	8
Package Overview	8
Product Overview	9
Main Unit.....	9
Control Panel.....	10
Rear View.....	11
Remote Control	12
Installation	13
Connecting the Projector.....	13
Connect to Computer / Notebook.....	13
Connect to Video Sources.....	14
Powering On/Off the Projector	15
Powering On the Projector	15
Powering Off the Projector.....	16
Warning Indicator.....	16
Adjusting the Projected Image.....	17
Adjusting the Projector's Height.....	17
Adjusting the Focus.....	17
Adjusting Projection Image Size.....	18
User Controls	19
Control Panel.....	19
Remote Control	20
On-screen Display Menus.....	21
How to operate.....	21
Menu Tree.....	22
Image	23
Display.....	28
Setup	30
Options	39
Appendices	43
Troubleshooting	44
Image.....	44
Other.....	47
Projector LED Status Indicator	48
Remote Control	49
Audio Problems	49
Replacing the Lamp.....	50
Cleaning the Projector	52
Cleaning the Lens	52
Cleaning the Case	52
Compatibility Modes.....	53
RS232 Commands	55
RS232 Protocol Function List.....	56
Ceiling Installation.....	63
Optoma Global Offices.....	64
Regulation & Safety notices.....	66
Operation conditions.....	67

Safety Information

	The lightning flash with arrow head within an equilateral triangle is intended to alert the user to the presence of uninsulated "dangerous voltage" within the product's enclosure that may be of sufficient magnitude to constitute a risk of electric shock to persons.
	The exclamation point within an equilateral triangle is intended to alert the user to the presence of important operating and maintenance (servicing) instructions in the literature accompanying the appliance.

WARNING: TO REDUCE THE RISK OF FIRE OR ELECTRIC SHOCK, DO NOT EXPOSE THE PROJECTOR TO RAIN OR MOISTURE. DANGEROUS HIGH VOLTAGES ARE PRESENT INSIDE THE ENCLOSURE. DO NOT OPEN THE CABINET.

REFER SERVICING TO QUALIFIED PERSONNEL ONLY.

Class B emissions limits

This Class B digital apparatus meets all requirements of the Canadian Interference-Causing Equipment Regulations.

Important Safety Instruction

1. Read these instructions –before using this projector.
2. Keep these instructions –for future reference.
3. Follow all instructions.
4. Install in accordance with the manufacturer's instructions :
 - A. **Do not block any ventilation openings.** To ensure reliable operation of the projector and to protect it from overheating, put the projector in a position and location that will not interfere with its proper ventilation. For example, do not place the projector on a bed, sofa, carpet, or similar surface that may block the ventilation openings. Do not put it in an enclosure, such as a bookcase or a cabinet that may keep air from flowing through its ventilation openings.
 - B. **Do not use this projector near water or moisture.** To reduce the risk of fire or electric shock, do not expose the projector to rain or moisture.
 - C. **Do not install near any heat sources,** such as radiators, heaters, stoves or other apparatus (including amplifiers) that produce heat.
5. Clean only with a dry cloth.
6. Only use attachments/accessories specified by the manufacturer.



Usage Notice

7. Refer all servicing to qualified service personnel. Servicing is required when the projector has been damaged in any way, such as:

- Power supply cord or plug is damaged.
- Liquids have spilled or objects have fallen into the apparatus.
- The projector has been exposed to rain or moisture, does not operate normally, or has been dropped.

Do not attempt to service this projector yourself. Opening or removing covers may expose you to dangerous voltages or other hazards. Please call Optoma to be referred to an authorized service center near you.

8. Do not let objects or liquids enter the projector as they may touch dangerous voltage points or short-out parts that could result in a fire or electric shock.

9. See projector enclosure for safety related markings.

10. The projector should not be adjusted or repaired by anyone except properly qualified service personnel.

Precautions



Please follow all warnings, precautions and maintenance as recommended in this user's guide.



❖ When the lamp reaches the end of its life, the projector will not turn back on until the lamp module has been replaced. To replace the lamp, follow the procedures listed under "Replacing the Lamp" section on page 50.

- Warning - Do not look into the projector's lens when the lamp is on. The bright light may damage your eyes.
- Warning - To reduce the risk of fire or electric shock, do not expose this projector to rain or moisture.
- Warning - Please do not open or disassemble the projector as this may cause electric shock.
- Warning - When replacing the lamp, please allow unit to cool down, and follow all replacement instructions. See page 50.
- Warning - This projector will detect the life of the lamp itself. Please be sure to change the lamp when it shows warning messages.
- Warning - Use the "Lamp Reset" function from the on-screen display "Options | Lamp Settings" menu after replacing the lamp module (see page 42).
- Warning - When switching the projector off, please ensure the cooling cycle has been completed before disconnecting the power. Allow 90 seconds for the projector to cool down.
- Warning - When the lamp is approaching the end of its life, the message "Lamp is approaching the end of its useful life" displays on the screen. Please contact your local reseller or service center to change the lamp as soon as possible.
- Warning - To reduce the risk of injury to the eyes, do not look directly into the laser beam on the remote control and do not point the laser beam into anyone's eyes. This remote control is equipped with a Class II laser that emits radiation.

Do:

- ❖ Turn off the product before cleaning.
- ❖ Use a soft cloth moistened with a mild detergent to clean the display housing.
- ❖ Disconnect the power plug from the AC outlet if the product is not being used for a long period of time.

Do not:

- ❖ Block the ventilation slots and openings on the unit.
- ❖ Use abrasive cleaners, waxes or solvents to clean the unit.
- ❖ Use under the following conditions:
 - In extremely hot, cold or humid environments. Ensure that the ambient room temperature is within 5-40 °C and relative humidity is 10-85% (max.), non-condensing.
 - In areas susceptible to excessive dust and dirt.
 - Near any appliance that generates a strong magnetic field.
 - In direct sunlight.

Eye Safety Warnings



- ■ Avoid staring directly into the projector's beam of light at all times.
- ■ Minimize standing facing into the beam. Keep your back to the beam as much as possible.
- ■ Using a stick or laser pointer is recommended to avoid the need for the presenter to enter the beam.
- ■ Ensure that projectors are located out of the line of sight from the screen to the audience; this ensures that, when presenters look at the audience, they do not also have to stare at the projector lamp. The best way to achieve this is by ceiling-mounting the projector rather than placing it on floor or table top.
- ■ When projector is used in a classroom, adequately supervise students when they are asked to point out something on the screen.
- ■ In order to minimize the lamp power needed, use room blinds to reduce ambient light levels.

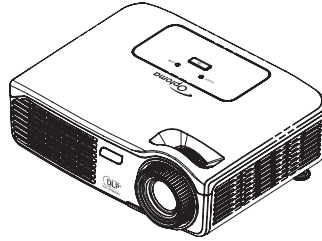
Product Features

This product is a single chip 0.55" SVGA DLP® projector.
Outstanding features include:

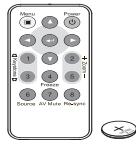
- ◆ Texas Instruments Single chip DLP® Technology
- ◆ Computer Compatibility:
 - Apple Macintosh, iMac, and VESA Standards:
UXGA, SXGA+, SXGA, WXGA, XGA, SVGA, VGA
- ◆ Video Compatibility:
 - NTSC, NTSC4.43
 - PAL/PAL-M/PAL-N/SECAM
 - SDTV and EDTV compatible
 - HDTV compatible (720p, 1080i, 1080p)
- ◆ Auto source detection with user definable settings
- ◆ Fully featured IR remote control
- ◆ User friendly multilingual On Screen Menu
- ◆ Advanced digital keystone correction and high quality full screen image re-scaling
- ◆ One built-in speaker 2 Watt amplifier
- ◆ Macintosh and PC compatible
- ◆ Closed Captioning equipped

Package Overview

This projector comes with all the items shown below. Check to make sure your unit is complete. Contact your dealer immediately if anything is missing.



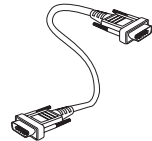
Projector



IR Remote Control
(with 3V Battery)



Power Cord 1.8m



VGA Cable 1.8m

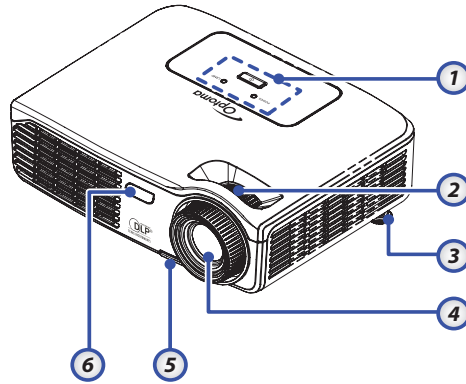


❖ Due to the difference in applications for each country, some regions may have different accessories.

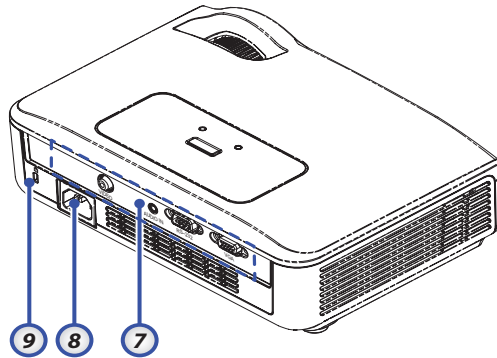
Documentation:

- User's Manual
- Warranty Card
- Quick Start Card
- WEEE Card

Product Overview Main Unit



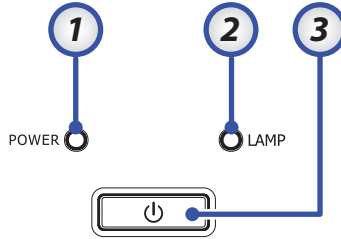
❖ Due to the difference application for each model. Function is dependent on the model purchased.



- | | |
|-------------------------|-----------------------------|
| 1. Control Panel | 6. Front IR Receiver |
| 2. Focus | 7. Input/Output Connections |
| 3. Tilt-Adjustment Foot | 8. Power Socket |
| 4. Lens | 9. Kensington™ Lock |
| 5. Elevator foot | |

Introduction

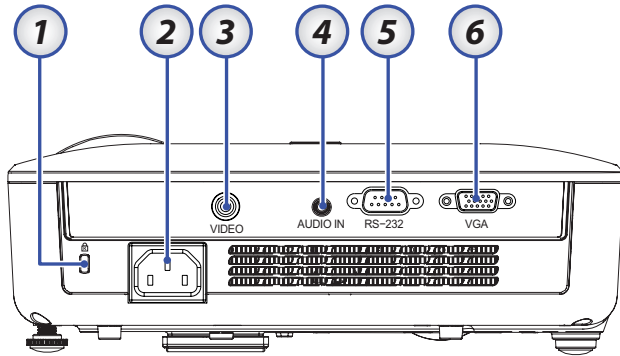
Control Panel



1. Power LED
2. Lamp LED

3. POWER Button

Rear View



❖ Due to the difference application for each model. Function is dependent on the model purchased.

1. Kensington™ Lock Port
2. Power Socket
3. Video Connector
4. AUDIO IN Connector
5. RS-232 Connector
6. VGA Connector

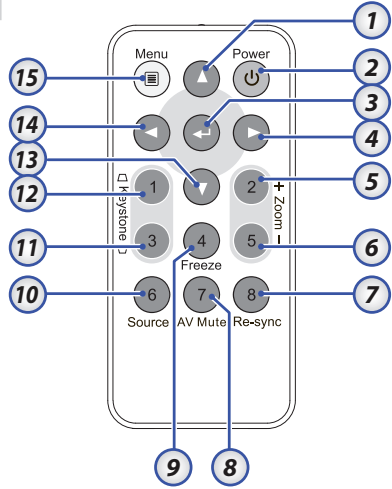
Introduction

Remote Control

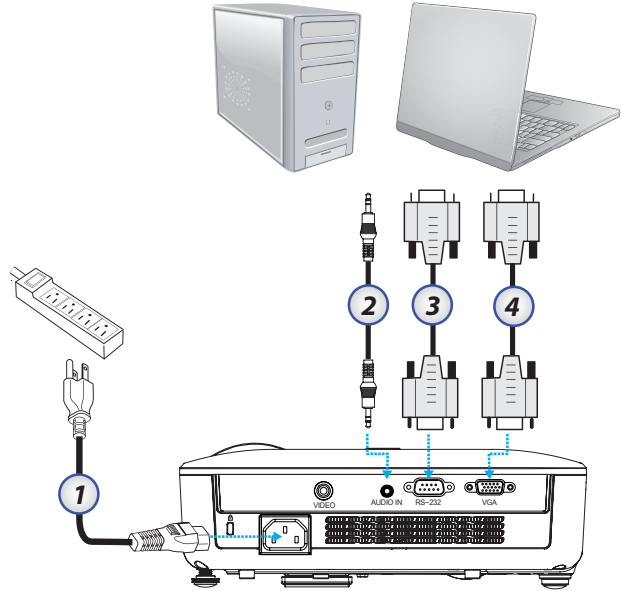


❖ Due to the difference in applications for each country, some regions may have different accessories.

1. Up
2. Power On/Off
3. Enter
4. Right
5. Zoom + / 2
6. Zoom - / 5
7. Re-Sync / 8
8. AV mute / 7
9. Freeze / 4
10. Source / 6
11. Keystone ▽ / 3
12. Keystone ▽ / 1
13. Down
14. Left
15. Menu



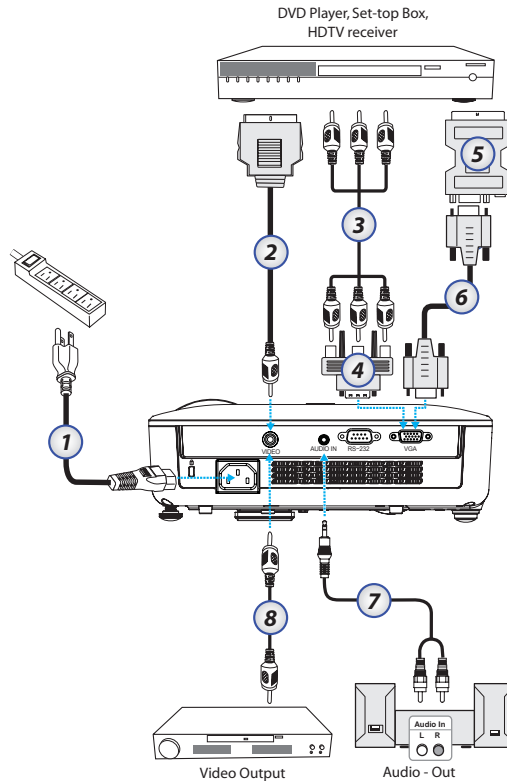
Connecting the Projector Connect to Computer / Notebook



❖ Due to the difference in applications for each country, some regions may have different accessories.

1. Power Cord
2. Audio-in (Optional 3.5mm jack cable)
3. RS-232 Cable (Optional)
4. VGA Cable

Connect to Video Sources



❖ Due to the difference in applications for each country, some regions may have different accessories.

1. Power Cord
2. SCART to video cable (Optional)
3. Component Cable (Optional)
4. RGB to Component Adapter (Optional)
5. SCART to RGB & S-Video Adapter (Optional)
6. VGA Cable
7. Audio-in (Optional RCA to 3.5mm jack cable)
8. Composite Video Cable (Optional)

Powering On/Off the Projector

Powering On the Projector

1. Connect the power cord to the projector.
2. Turn On the connected devices.
3. Ensure the Power LED is flashing and then press the POWER button to turn On the projector.

The projector's startup logo screen displays and connected devices are detected. If the connected device is a PC, press the appropriate keys on the computer keyboard to switch the display output to the projector. (Check the user manual of the PC to determine the appropriate Fn key combination to change display output.)

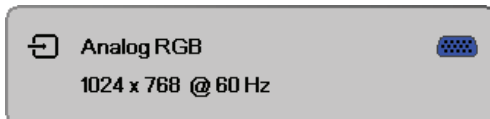
See Security Settings on page 36 if security lock is enabled.



- ❖ Turn on the projector first and then select the signal sources.

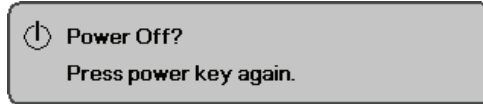


4. If more than one input device is connected, press the "Source" button sequentially to switch between devices. (DVD and HDTV are supported through the VGA connector)



Powering Off the Projector

1. Press **POWER** to turn off the projector lamp, a message displays on the projector's screen.



2. Press **POWER** again to confirm, otherwise the message disappears after 5 seconds.
3. The cooling fans continue to operate for about 10 seconds for cooling cycle.
(If you wish to turn the projector back on, you must wait until the projector has completed the cooling cycle and has entered standby mode. Once in standby mode, simply press **POWER** to restart the projector.)
4. Disconnect the power cord from the electrical outlet and the projector.
5. Do not turn on the projector immediately following a power off procedure.

Warning Indicator

- ❖ When the LAMP LED indicator lights red, the projector will automatically shut itself down. Please contact your local reseller or service center. See page 48.
- ❖ When the POWER LED repeatedly blinks six (6) times in conjunction with the LAMP LED blinking a single time, it indicates the fan has failed. Please contact your local dealer or our service center. See page 48.

Adjusting the Projected Image Adjusting the Projector's Height

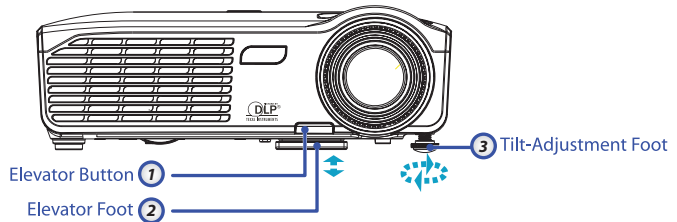
The projector is equipped with elevator foot for adjusting the image height.

To raise the image:

1. Press the elevator button ❶.
2. Raise the projector to the desired height using the Elevator Foot ❷, then release the button to lock the elevator foot into position.
3. Use the Tilt-Adjustment Foot ❸ to fine-tune the display angle.

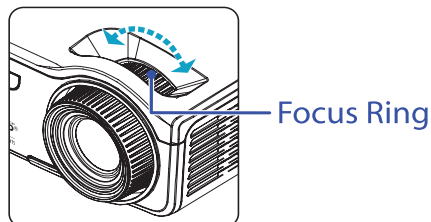
To lower the image:

1. Press the elevator button.
2. Lower the image, then release the button to lock the elevator feet into position.
3. Use Tilt-Adjustment Foot ❸ to fine-tune the display angle.



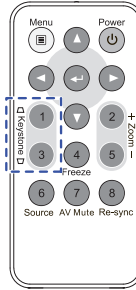
Adjusting the Focus

To focus the image, rotate the focus ring until the image is clear. The projector will focus at distances from 3.3 to 32.8 feet (1.01 to 10 meters).

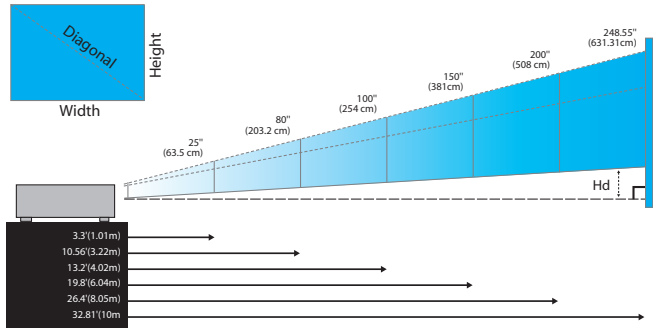


Installation

Use the keystone buttons to correct image distortion. They can be found on the remote control.



Adjusting Projection Image Size

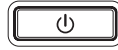


Screen (Diagonal)	25" (63.5cm)	80" (203.2cm)	100" (254cm)	150" (381cm)	200" (508cm)	248.55" (631.31cm)
Screen size	20"x15" 51x38cm	64"x48" 163x122cm	80"x60" 203x152cm	120"x90" 305x229cm	160"x120" 406x305cm	198.84"x149.13" 505.05x378.79cm
Hd	2.1' / 5cm	6.72' / 17cm	8.4' / 21cm	12.6' / 32cm	16.8' / 43cm	20.88' / 53.03cm
Distance	3.3' / 1.01m	10.56' / 3.22m	13.2' / 4.02m	19.8' / 6.04m	26.4' / 8.05m	32.81' / 10m

Control Panel

POWER 

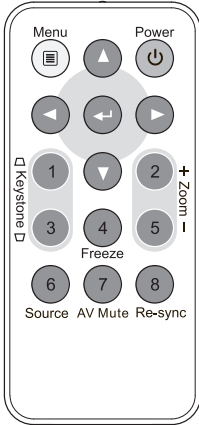
 LAMP



Using the Control Panel

Power		Refer to the “Powering On/Off the Projector” section on page 15.
Power LED	Green	Unit is powered on and working correctly.
	Flashing Green	Unit is on stand-by/warm up/cooling down.
	Off	Unit is powered off.
Lamp LED	On	Lamp not ready—do not press the power button.
	Off	Lamp is in normal state.

Remote Control



Using the Remote Control

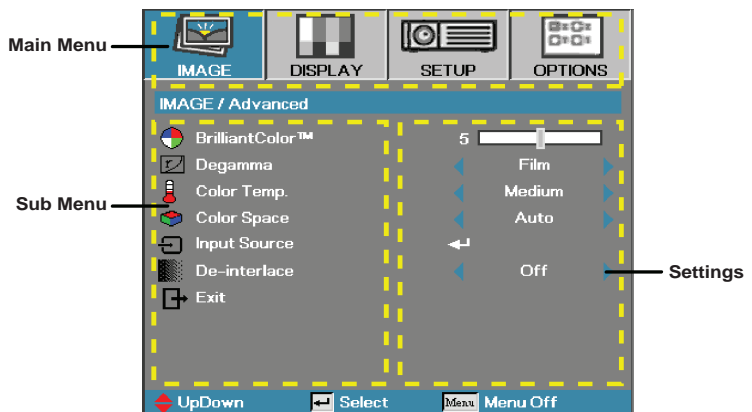
Power		Refer to the “Powering On/Off the Projector” section on page 15.
Four Directional Select Keys		Use ▲▼◀▶ to select items or make adjustments to your selection.
		Confirm your item selection.
Source / 6		Press Source to select an input signal.
Re-Sync / 8		Automatically synchronizes the projector to the input source.
Keystone / 1		Adjusts image distortion caused by tilting the projector. (± 30 degrees)
Keystone / 3		
Menu		Press Menu to launch the on-screen display (OSD) menu. To exit OSD, Press Menu again.
Zoom + / 2		Press + to zoom in to an image.
Zoom - / 5		Press - to zoom out of an image.
Freeze / 4		Press Freeze to pause the screen image.
AV Mute / 7		Momentarily turns off/on the audio and video.

On-screen Display Menus

The Projector has multilingual On-screen Display menus that allow you to make image adjustments and change a variety of settings. The projector will automatically detect the source.

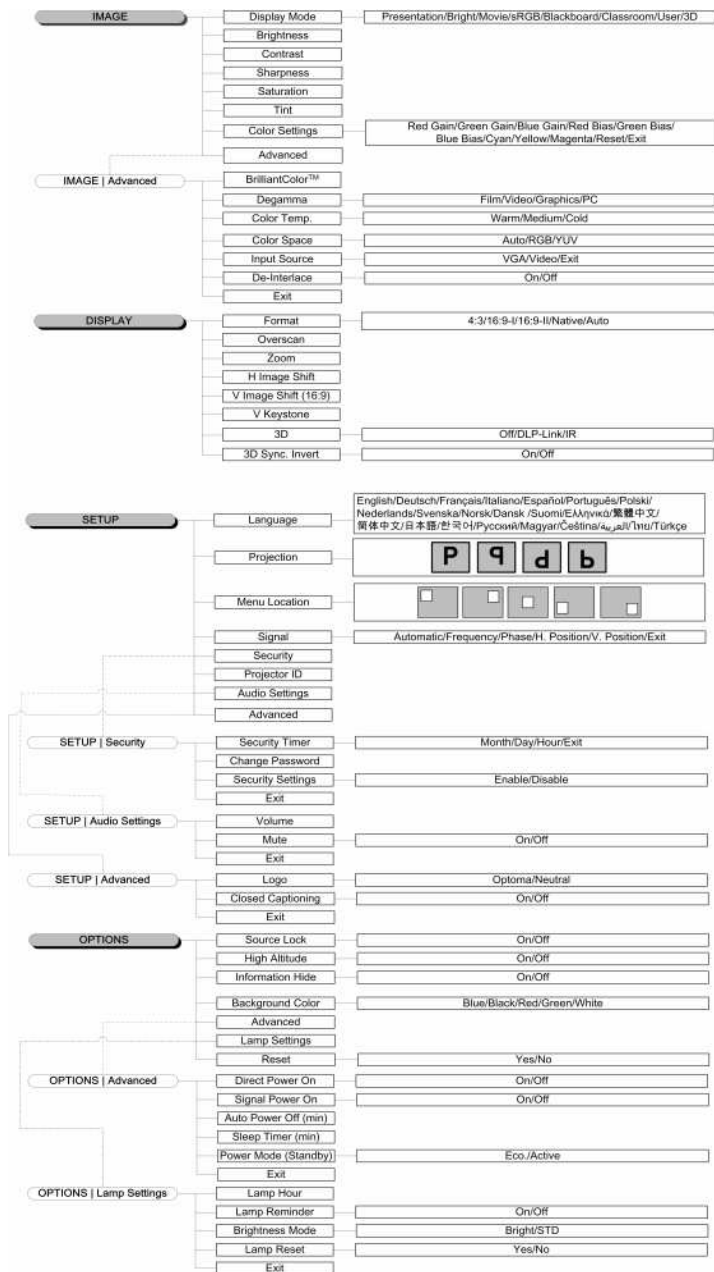
How to operate

1. To open the OSD menu, press **Menu** on the Remote Control.
2. When OSD is displayed, use ◀▶ keys to select any item in the main menu. While making a selection on a particular page, press ▼ or ◀ to enter sub menu.
3. Use ▲▼ keys to select the desired item and adjust the settings by ◀▶ key.
4. Select the next item to be adjusted in the sub menu and adjust as described above.
5. Press ◀ to confirm, and the screen will return to the main menu.
6. To exit, press **Menu** again. The OSD menu back to last level projector will automatically save the new settings.

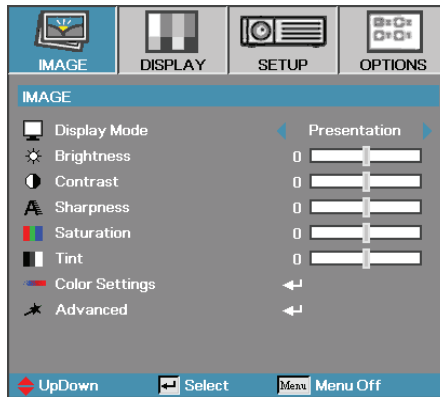




Menu Tree



Image



Display Mode

There are many factory presets optimized for various types of images.

- ▶ Presentation: Good color and brightness from PC input.
- ▶ Bright: Maximum brightness from PC input.
- ▶ Movie: For home theater.
- ▶ sRGB: Standardised accurate color.
- ▶ Blackboard: Tuned for blackboard usage.
- ▶ Classroom: Recommended settings for classroom.
- ▶ User: User's own settings.

The initial default settings of this mode is from Presentation/ Movie mode. Any further adjustments by the user will be saved in this mode for future use.

- ▶ 3D: Recommend setting for 3D mode enable (DLP-Link / IR).

Brightness

Adjust the brightness of the image.

- ▶ Press ◀ to darken image.
- ▶ Press ▶ to lighten the image.

Contrast

The contrast controls the degree of difference between the lightest and darkest parts of the picture.

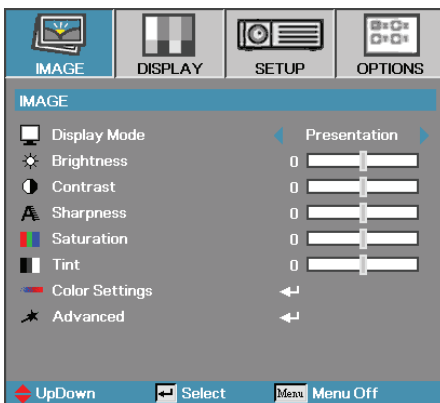
- ▶ Press ◀ to decrease the contrast.
- ▶ Press ▶ to increase the contrast.

Sharpness

Adjusts the sharpness of the image.

- ▶ Press ◀ to decrease the sharpness.
- ▶ Press ▶ to increase the sharpness.

Image



Saturation

Adjusts a video image from black and white to full color saturation.

- ▶ Press ◀ to decrease the amount of saturation in the image.
- ▶ Press ▶ to increase the amount of saturation in the image.

Tint

Adjusts the color balance of red and green.

- ▶ Press ◀ to increase the amount of green in the image.
- ▶ Press ▶ to increase the amount of red in the image.

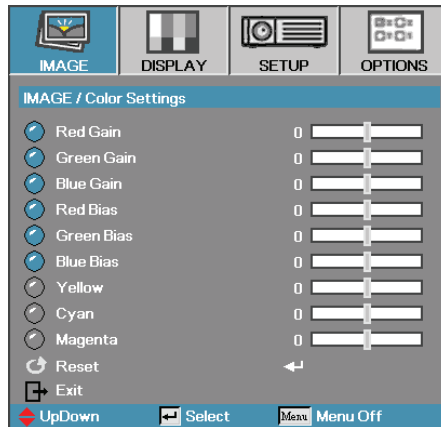
Color Settings

Enter the Color Settings menu. Select the Red/Green/Blue Gain for brightness adjustments and Bias for contrast adjustments for the whole picture. Individual color adjustments for Cyan, Magenta, Yellow can also be adjusted. See page 25 for more details.

Advanced

Enter the Advanced menu. Select advanced display options such as BrilliantColor™, Degamma, Color Temp., Color Space, Input Source, De-Interlace, and Exit. See page 26 for more information.

Image | Color Settings



Gain

Set RGB Gain to adjust the Brightness of the following Colors:

- ▶ Red—increase or decrease the gain value for red.
- ▶ Green—increase or decrease the gain value for green.
- ▶ Blue—increase or decrease the gain value for blue.

Bias

Set RGB Bias to adjust the Contrast of the following Colors:

- ▶ Red—increase or decrease the bias value for red.
- ▶ Green—increase or decrease the bias value for green.
- ▶ Blue—increase or decrease the bias value for blue.

Color

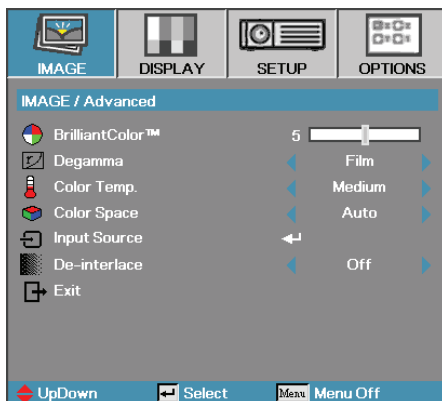
Set values to adjust the level of the following colors:

- ▶ Yellow—increase or decrease the color value for yellow.
- ▶ Cyan—increase or decrease the color value for cyan.
- ▶ Magenta—increase or decrease the color value for magenta.

Reset

Reset all Color Setting values to the factory default.

Image | Advanced



BrilliantColor™

This adjustable item utilizes a new color-processing algorithm and system level enhancements to enable higher brightness while providing true, more vibrant colors in picture. The range is from 0 to 10. If you prefer a stronger enhanced image, adjust toward the maximum setting. For a smoother, more natural image, adjust toward the minimum setting.

Degamma

This allows you to choose a degamma table that has been fine-tuned to bring out the best image quality for the input.

- ▶ Film—for home theater.
- ▶ Video—for video or TV source.
- ▶ Graphics—for image source.
- ▶ PC—for PC or computer source.

Color Temp.

Adjust the color temperature. Cold temperature, the screen looks colder; with Warm temperature, the screen looks warmer.

Color Space

Select an appropriate color matrix type from AUTO, RGB, YUV.

Input Source

Enter the Input Source submenu. Select the sources to scan for at startup. See page 27 for more information.

De-interlace

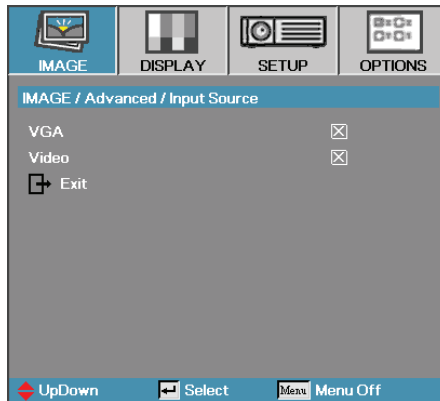
Press the cursor ◀ or ▶ button to select different De-interlace modes. This function converts an interlaced video signal into progressive signal.

- ▶ On: Use this mode for Films.
- ▶ Off: Use this mode for Video or TV sources.



❖ De-interlace only supports 480i/576i signal via Video.

Image | Advanced | Input Source



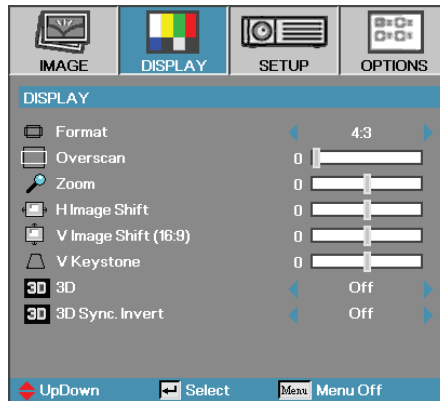
- ❖ If all sources are deselected, the projector cannot display any images. Always leave at least one source selected.

Input Source

Use this option to enable / disable input sources.

Press ▲ or ▼ to select a source, then press ← to enable / disable it. The projector will not search inputs that are de-selected.

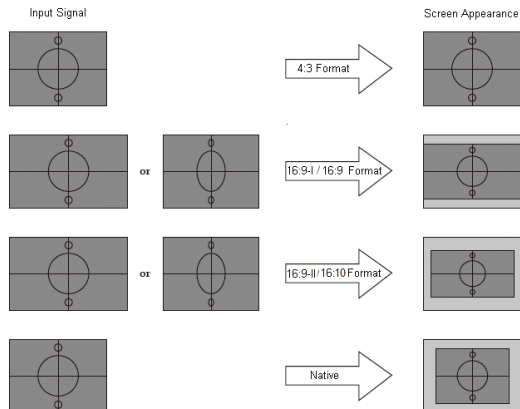
Display



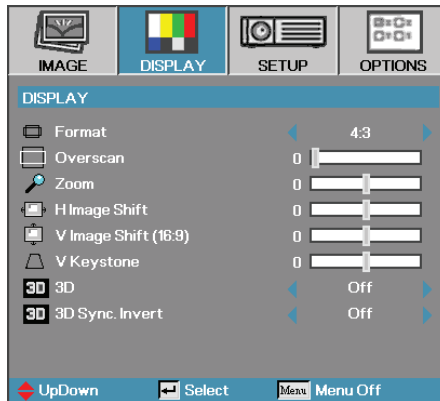
Format

Use this function to choose your desired aspect ratio.

- ▶ 4:3: This format is for 4x3 input sources not enhanced for Wide screen TV.
- ▶ 16:9 I: This format is for 16x9 input sources, like HDTV and DVD enhanced for Wide screen TV.
- ▶ 16:9 II: The non-standard wide-screen display format of the projector. Part of the original image will be cut if the image aspect ratio is less than 1.67:1.
- ▶ Native: Depends on the resolution of the input source – No scaling is performed.
- ▶ Auto: Automatically selects the appropriate format.



Display



Overscan

Overscan function removes the noise in a video image. Overscan the image to remove video encoding noise on the edge of video source.

Zoom

- ▶ Press ◀ to reduce the size of the image.
- ▶ Press ▶ to magnify an image on the projected screen.

H Image Shift

Shifts the projected image position horizontally.

- ▶ Press ◀ to move the image left on the projected screen.
- ▶ Press ▶ to move the image right on the projected screen.

V Image Shift (16:9)

Shifts the projected image position vertically (in 16:9 format).

- ▶ Press ▲ to move the image up on the projected screen.
- ▶ Press ▼ to move the image down on the projected screen.

V Keystone

Press ◀ or ▶ to compensate for vertical image distortion when the projector is positioned at an angle to the screen.

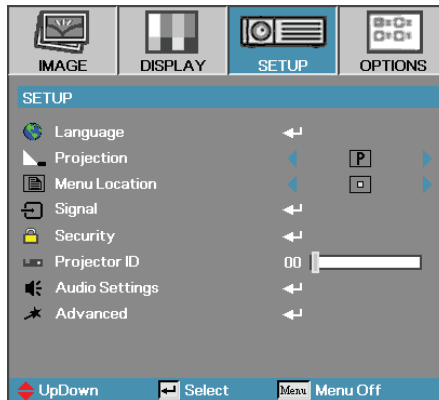
3D

Press ◀ or ▶ to enable or disable the 3D function. When the 3D function is enabled, the current picture mode adjustment will be disabled.

3D Sync invert

Press ◀ or ▶ to enable or disable the 3D Sync invert function to invert images.

Setup



Language

Enter the Language menu. Select the multilingual OSD menu. See page 32 for more information.

Projection

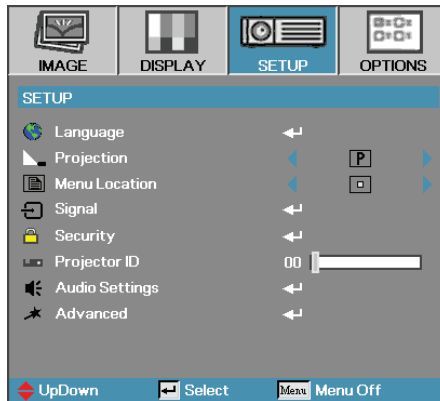
Select projection method:

- ▶ **P** Front Desktop
The factory default setting.
- ▶ **R** Rear Desktop
When you select this function, the projector reverses the image so you can project from behind a translucent screen.
- ▶ **F** Front Ceiling
When you select this function, the projector turns the image upside down for ceiling-mounted projection.
- ▶ **B** Rear Ceiling
When you select this function, the projector reverses and turns the image upside down at same time. You can project from behind a translucent screen with ceiling mounted projection.

Menu Location

Choose the menu location on the display screen.

Setup



Signal

Enter the Signal menu. Set projector signal properties. See page 33 for more information.

Security

Enter the Security menu. Access the projector's security features. See page 34 for more information.

Projector ID

Select a two digit projector ID from 00 through 99.

Audio Settings

Enter the Audio Settings menu. Set audio level properties. See page 37 for more information.

Advanced

Enter the Advanced menu. Select the screen display during startup. See page 38 for more information.

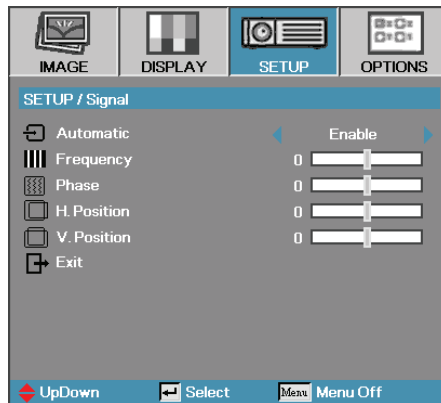
Setup | Language



Language

Choose the multilingual OSD menu. Press **←** into the sub menu and then use the Left (**◀**) or Right (**▶**) key to select your preferred language.

Setup | Signal



Automatic

Enable or disable automatically selects the appropriate settings.

Frequency

Change the display data frequency to match the frequency of your computer's graphics card. If you experience a vertical flickering bar, use this function to make an adjustment.

Phase

Phase synchronizes the signal timing of the display with the graphics card. If you experience an unstable or flickering image, use this function to correct it.

H. Position

- ▶ Press ◀ to move the image left.
- ▶ Press ▶ to move the image right.

V. Position

- ▶ Press ◀ to move the image down.
- ▶ Press ▶ to move the image up.

Setup / Security



Security Timer

Enter the Security Timer sub menu.



- ❖ No password is required to access Setup | Security unless the Security Timer or Security Setting are enabled.

Enter the Months, Days, and Hours that the projector can be used without entering the password. Exiting to the Setup menu activates the Security Timer.

Once activated, the projector requires a password on the specified dates and times to allow power on and access to the security menu.

If the projector is in use and the Security Timer is active, the following screen displays 60 seconds before the password is required.



Setup / Security

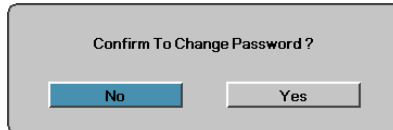


- ❖ If the incorrect password is entered three times, the device auto shutdowns after 10 seconds.

Change Password

Use this submenu to change the security password for the projector.

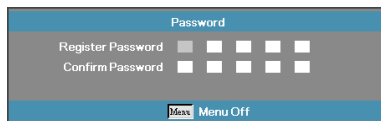
1. Select Change Password from the Security submenu. The Confirm Change Password dialog box displays.
2. Select Yes.



3. Enter the default password <1> <2> <3> <4> <5>. A second password screen displays.

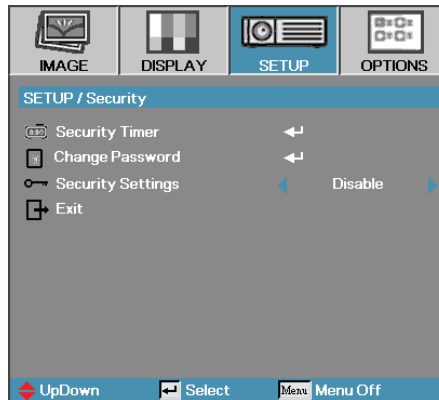


4. Enter the new password twice for verification.



- ❖ If the new passwords do not match, the password screen redisplay.

Setup / Security

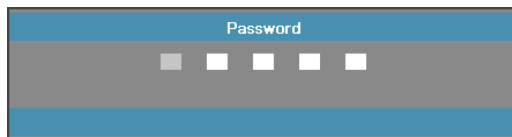


Security Settings

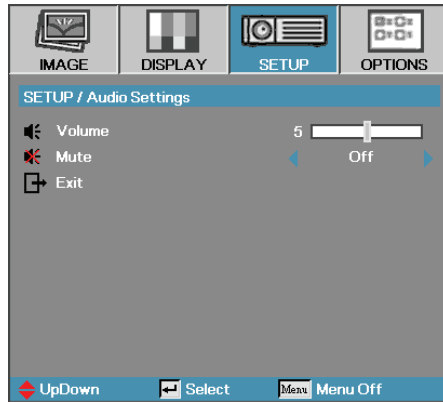
Enable or disable the security password.

- ▶ Enabled—the current password is required to power on the projector and access the Security menu.
- ▶ Disabled—no password is required for any function.

When security is enabled, the following screen displays at startup and before access to the Security menu is allowed:



Setup / Audio Settings



Volume

Press ◀ to decrease the volume of voice.

Press ▶ to increase the volume of voice.

Mute

Toggle the audio on or off.

- ▶ Off—the speaker volume is turned on.
- ▶ On—the speaker volume is turned off.

Setup / Advanced



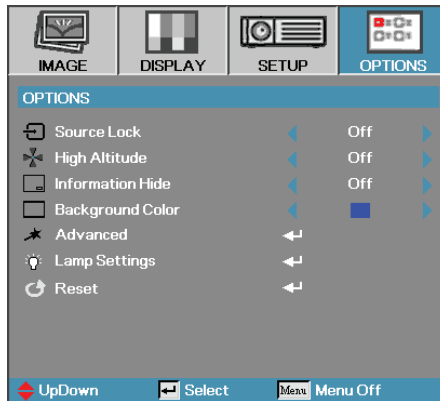
Logo

- Select the screen to display during startup.
- ▶ Optoma—the supplied default startup screen.
 - ▶ Neutral—Screen with black color.

Closed Captioning

- Select the screen to display closed captioning
- ▶ Off—the supplied default setting.
 - ▶ On—closed captioning text is displayed if available.

Options



Source Lock

Lock the current source as the only available source, even if the cable is unplugged.

- ▶ On—only the current source is recognized as an input source.
- ▶ Off—all sources selected in Image | Advanced | Input Source are recognized as an input source.

High Altitude

Adjust the fan speed to reflect the environment.

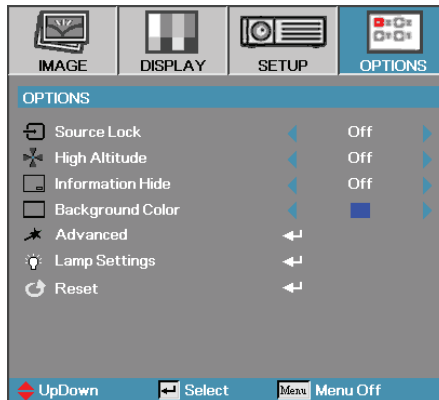
- ▶ On—increases fan speed for high temperature, humidity, or altitude.
- ▶ Off—regular fan speed for normal conditions.

Information Hide

Suppress informational messages on the projected screen.

- ▶ On—no status messages appear on screen during operation.
- ▶ Off— status messages appear as normal on screen during operation.

Options



Background Color

Select the desired background color for the projected image when no source is detected.

Advanced

Enter the Advanced menu. See page 41 for more details.

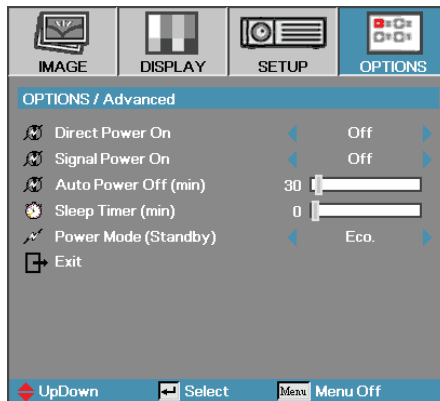
Lamp Settings

Enter the Lamp Settings menu. See pages 42-43 for more details.

Reset

Reset all Options to default factory settings.

Options / Advanced



Direct Power On

Enable or disable Direct Power On.

- ▶ On—the projector powers on automatically when AC power is supplied.
- ▶ Off—the projector must be powered on as normal.

Signal Power On

Enable or disable Signal Power On.

- ▶ On—the projector turns on automatically when an active signal is detected.
- ▶ Off—the projector can be turned on by pressing the “Power” button.

Auto Power Off (min)

Set the Auto Power Off interval. The projector powers off the lamp after 30 minutes of no signal by default. The following warning is displayed 60 seconds before power off.

The projector will automatically shutdown after 60 sec

Sleep Timer (min)

Set the Sleep Timer interval. The projector powers off after the specified time period of inactivity (regardless of signal). The following warning is displayed 60 seconds before power off.

The projector will automatically shutdown after 60 sec

Power Mode (Standby)

- ▶ Eco.: Choose “Eco.” to save power dissipation further <1W.
- ▶ Active: Choose “Active” to return to normal standby.

Options / Lamp Settings



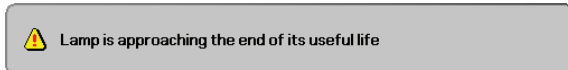
Lamp Hours

Displays the number of hours the lamp has been active. This item is for display only.

Lamp Reminder

Enable or disable the lamp life span reminder.

- ▶ On—a warning message displays when remaining lamp life is less than 30 hours.



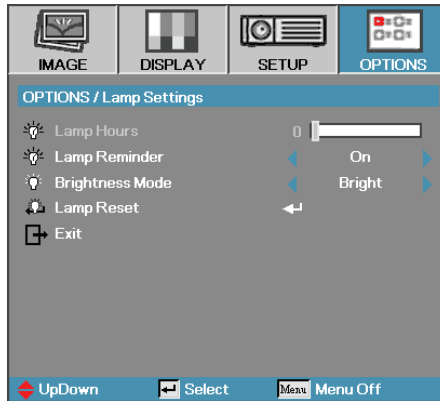
- ▶ Off—no warning message displays.

Brightness Mode

Select the lamp brightness mode.

- ▶ Bright—the default setting.
- ▶ STD—lower brightness setting to conserve lamp life.

Options / Lamp Settings

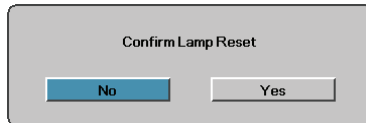


Lamp Reset

After replacing the lamp, reset the lamp counter to accurately reflect the new lamp's life span.

1. Select **Lamp Reset**.

A confirmation screen displays.



2. Select **Yes** to reset the lamp counter to zero.

Troubleshooting

If you experience a problem with your projector, please refer to the following information. If a problem persists, please contact your local reseller or service center.

Image

No image appears on-screen

- ▶ Ensure all the cables and power connections are correctly and securely connected as described in the **Installation** section.
- ▶ Ensure all the pins of connectors are not bent or broken.
- ▶ Check if the projection lamp has been securely installed. Please refer to the **Replacing the lamp** section.

Partial, scrolling or incorrectly displayed image

- ▶ Press “Re-Sync” on the remote.
- ▶ If you are using a PC:
 - For Windows 95, 98, 2000, XP:
 1. Open the **My Computer** icon, the **Control Panel** folder, and then double click on the **Display** icon.
 2. Select the **Settings** tab.
 3. Verify that your display resolution setting is lower than or equal to UXGA (1600 x 1200).
 4. Click on the **Advanced Properties** button.

If the projector is still not projecting the whole image, you will also need to change the monitor display you are using. Refer to the following steps.
 5. Verify the resolution setting is lower than or equal to UXGA (1600 x 1200).
 6. Select the Change button under the **Monitor** tab.
 7. Click on **Show all devices**. Next, select **Standard monitor types** under the SP box; choose the resolution mode you need under the “Models” box.
 8. Verify that the resolution setting of the monitor display is lower than or equal to UXGA (1600 x 1200). (*)

- ▶ If you are using a Notebook:
 1. First, follow the steps above to adjust resolution of the computer.
 2. Press the toggle output settings. Example: [Fn]+[F4]

Acer ⇨	[Fn]+[F5]	IBM/Lenovo ⇨	[Fn]+[F7]
Asus ⇨	[Fn]+[F8]	HP/Compaq ⇨	[Fn]+[F4]
Dell ⇨	[Fn]+[F8]	NEC ⇨	[Fn]+[F3]
Gateway ⇨	[Fn]+[F4]	Toshiba ⇨	[Fn]+[F5]

Mac Apple:

System Preference ⇨ Display ⇨ Arrangement ⇨ Mirror display

If you experience difficulty changing resolutions or your monitor freezes, restart all equipment including the projector.

The screen of the Notebook or PowerBook computer is not displaying your presentation

- ▶ If you are using a Notebook:
Some Notebooks may deactivate their own screens when a second display device is in use. Each has a different way to be reactivated. Refer to your computer's manual for detailed information.

Image is unstable or flickering

- ▶ Use **Phase** to correct it. See page 33 for more information.
- ▶ Change the monitor color setting on your computer.

Image has vertical flickering bar

- ▶ Use **Frequency** to make an adjustment. See page 33 for more information.
- ▶ Check and reconfigure the display mode of your graphic card to make it compatible with the projector.

Image is out of focus

- ▶ Adjusts the Focus Ring on the projector lens.
- ▶ Make sure the projection screen is between the required distances from the projector. See page 18 for more information.

The image is stretched when displaying 16:9 DVD title

When you play anamorphic DVD or 16:9 DVD, the projector will show the best image in 16:9 format in OSD. If you play 4:3 format DVD title, please change the format as 4:3 in projector OSD. If the image is still stretched, you will also need to adjust the aspect ratio by referring to the following:

- ▶ Please setup the display format as 16:9 (wide) aspect ratio type on your DVD player.

Image is too small or too large

- ▶ Move the projector closer to or further from the screen.
- ▶ Press [Menu] button on the remote control or projector panel, go to **Display | Format** and try the different settings.



❖ Use of Keystone is not recommended.

Image has slanted sides

- ▶ If possible, reposition the projector so that it is centered on the screen and below the bottom of the screen.
- ▶ Press [Keystone +/-] on the remote control until the sides are vertical.

Image is reversed

- ▶ Select **Setup | Projection** from the OSD and adjust the projection direction.

Other

The projector stops responding to all controls

- ▶ If possible, turn off the projector, then unplug the power cord and wait at least 60 seconds before reconnecting power.

Lamp burns out or makes a popping sound

- ▶ When the lamp reaches its end of life, it will burn out and may make a loud popping sound. If this happens, the projector will not turn on until the lamp module has been replaced. To replace the lamp, follow the procedures in Replacing the Lamp on page 49.

Projector LED Status Indicator

Message	Power LED	Lamp LED
	(Green)	(Red)
Standby	2.5 sec dark 1 sec light	○
Warm up	0.5 sec dark 0.5 sec light	○
Operating	☀	○
Cooling down	1.0 sec dark 1.0 sec light	○
Over Temp	3	○
Lamp Fail	○	☀
Thermal Break Status Error	4	○
Lamp Door Sensor Detect High	7	○
Fan 1 error (Lamp Fan)	6	1
Fan 2 error (Power Fan)	6	2
Color Wheel Error	9	○



Steady light ⇔ ☀

No light ⇔ ○

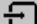
The digit represents the number of led blinks.

Message Reminders

- ▶ Replacing the lamp:

 **Lamp is approaching the end of its useful life**

- ▶ Out of range: (see the following for more information)

 **Signal out of range**
lower image resolution.

Remote Control

If the remote control does not work

- ▶ Check the operating angle for the remote control is approximately $\pm 15^\circ$.
- ▶ Make sure there are no obstructions between the remote control and the projector. Move to within 7m (23 ft) of the projector.
- ▶ Make sure the batteries are inserted correctly.
- ▶ Replace weak batteries in the remote control.

Audio Problems

There is no sound

- ▶ Adjust the volume on the remote control.
- ▶ Adjust the volume of the audio source.
- ▶ Check the audio cable connection.
- ▶ Test the source audio output with other speakers.
- ▶ Have the projector serviced.

The sound is distorted

- ▶ Check the audio cable connection.
- ▶ Test the source audio output with other speakers.
- ▶ Have the projector serviced.

Replacing the Lamp

The projection lamp should be replaced when it burns out. It should only be replaced with a certified replacement part, which you can order from your local dealer.

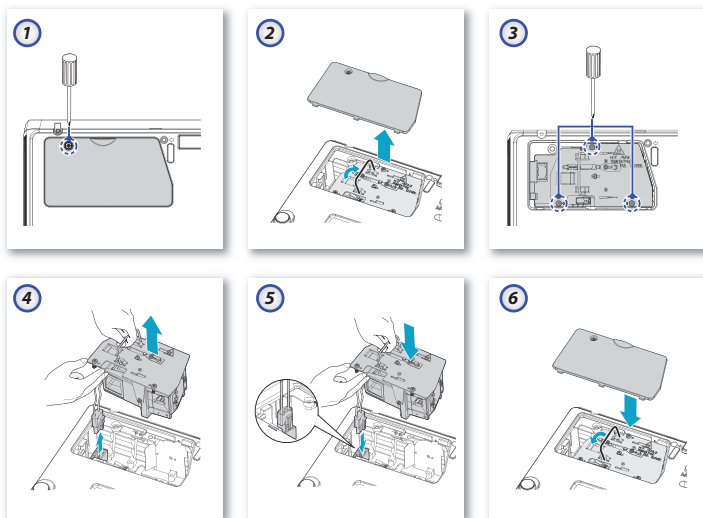
Important:

- ▶ The lamp contains a certain amount of mercury and should be disposed of according to local ordinance regulations.
- ▶ Avoid touching the glass surface of the new lamp, doing so may shorten its operation life.



Warning:

- ▶ Be sure to turn off and unplug the projector at least an hour before replacing the lamp. Failure to do so could result in a severe burn.



Replacing the Lamp

1. Loosen the captive screws on the lamp compartment cover.
2. Remove the lamp compartment cover.
3. Remove the three screws from the lamp module.
4. Lift the module handle up and disconnect the lamp connector then pull firmly on the module handle to remove the lamp module.
5. Reverse steps 1 to 4 to install the new lamp module. While installing, align the lamp module with the connector and ensure it is level to avoid damage.

Note: The lamp module must sit securely in place and the lamp connector must be connected properly before tightening the screws.

6. Replace the lamp compartment lid and tighten the captive screw.

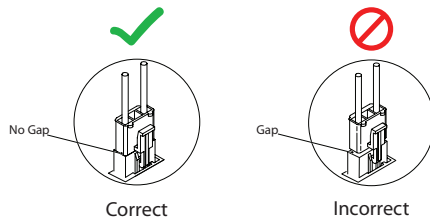
After replacing the lamp, the lamp hours counter must be reset. See page 42 for more information.



Warning:

- ▶ Lamp Connector must be installed flush with the connector base as shown in the image below. A gap between the Lamp Connector and the connector base will cause damage to the projector.

The following images illustrate correct and incorrect Lamp Connector installations.



Cleaning the Projector

Cleaning the projector to remove dust and grime will help ensure trouble-free operation.

Warning:

- ▶ Be sure to turn off and unplug the projector at least an hour before cleaning. Failure to do so could result in a severe burn.
- ▶ Use only a dampened cloth when cleaning. Do not allow water to enter the ventilation openings on the projector.
- ▶ If a little water gets into the projector interior while cleaning, leave unplugged in a well-ventilated room for several hours before using.
- ▶ If a lot of water gets into the projector interior when cleaning, have the projector serviced.

Cleaning the Lens

You can purchase optic lens cleaner from most camera stores. Refer to the following to clean the projector lens.

1. Apply a little optic lens cleaner to a clean soft cloth.
(Do not apply the cleaner directly to the lens.)
2. Lightly wipe the lens in a circular motion.

Caution:

- ▶ Do not use abrasive cleaners or solvents.
- ▶ To prevent discoloration or fading, avoid getting cleaner on the projector case.

Cleaning the Case

Refer to the following to clean the projector case.

1. Wipe off dust with a clean dampened cloth.
2. Moisten the cloth with warm water and mild detergent (such as used to wash dishes), and then wipe the case.
3. Rinse all detergent from the cloth and wipe the projector again.

Caution:

To prevent discoloration or fading of the case, do not use abrasive alcohol-based cleaners.

Compatibility Modes

Computer Compatibility

Signal	Resolution	Refresh Rate (Hz)
NTSC	-	60
PAL/SECAM	-	50
VESA	640 x 350	70.1/ 85.1
	640 x 400	70.1 / 85.1
	720 x 350	70
	720 x 400	70/ 85
VGA	720 x 576	50/ 60
	640 x 480	60/ 67/ 72.8/ 75/ 85
	SVGA	800 x 600
832 x 624		72/ 75
1024 x 576		50/ 60
XGA	1024 x 768	60/ 70.1/ 72/ 75/ 85/ 120
	1152 x 864	60/ 70/ 75/85
HD720	1280 x 720	50/ 60/ 75/ 85/ 120
WXGA	1280 x 768	60/ 70/ 75/ 85
WXGA-800	1280 x 800	60
SXGA	1280 x 1024	60/ 75/85
SXGA+	1400 x 1050	60
UXGA	1600 x 1200	60
	1600 x 1050	60
HDTV	1920 x 1080	25/30
	1920 x 1080i	50/ 60
	1920 x 1080p	24/25/30/50/ 60
SDTV	1280 x 720	60
	1280 x 720p	50/ 60
	720 x 576	50
	720 x 576i	50



❖ For wide screen resolution (WXGA), the compatibility support is dependent on Notebook/PC models. Please note that using resolutions other than native (800 x 600) may result in some loss of image clarity.

Appendices

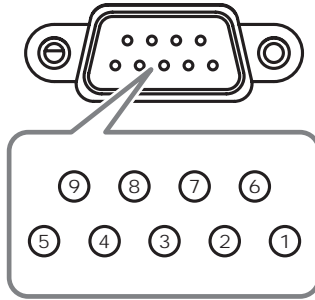
Signal	Resolution	Refresh Rate (Hz)
	720 x 576p	50
	720 x 480	60
	720 x 480i	60
	720 x 480p	60

Apple Mac Compatibility

Resolution	Macbook		Macbook Pro (Intel)	Power Mac G5	Power Mac G4
	Hz-	Analog	Analog	Analog	Analog
800x600	60	o	o	-	-
800x600	72	o	o	o	o
800x600	75	o	o	o	o
800x600	85	o	o	o	o
1024x768	60	o	o	o	o
1024x768	70	o	o	o	o
1024x768	75	o	o	o	o
1024x768	85	o	o	o	o
1280x720	60	o	o	o	o
1280x720	75	o	o	-	o
1280x720	85	o	o	-	o
1280x768	60	o	o	-	o
1280x768	75	o	o	o	o
1280x768	85	o	o	-	o
1280x800	60	o	o	o	o
1280x1024	60	-	o	o	o
1280x1024	75	-	o	o	-
1680x1050	60	o	o	-	-
1920x1200	60	o	o	-	-

RS232 Commands

RS232 Connector (projector side)



Pin No	Specification
1	N/A
2	RXD
3	TXD
4	DTR
5	GND
6	DSR
7	RTS
8	CTS
9	N/A

RS232 Protocol Function List

RS232 Command Table

Baud Rate	9600
Data Bits	8
Parity Check	None
Stop Bits	1
Flow Control	None
UART16550 FIFO	Disable

Lead Code	Projector ID		Command ID			space	variable	carriage return
~	X	X	X	X	X		n	CR
Fix code	Set in OSD		Defined by Optoma					
One Digit	00-99		2 or 3 Digit			One Digit	Per item Definition	Fix code One digit
	Two Digit		See the Follow content			Digit		

Keypad Command

Function		ASCII	Pass	Fail
Power	On/Off	n=1/n=0 & n=2	P	F
Power On with Password		~XX00 1 ~nnnnn	P	F
Resync		n=1	P	F
AV Mute	On/Off	n=1/n=0 & n=2	P	F
Mute	On/Off	n=1/n=0 & n=2	P	F
Freeze/Unfreeze		n=1/n=2	P	F
Direct Source Selection		n=12	P	F
VGA 1		n=5		
VGA 1 SCART		n=7		
VGA 1 Component		n=8		
Video		n=10		

OSD/Image

Function		ASCII	Pass	Fail
Display Mode	Presentation	n=1	P	F
	Bright	n=2		
	Movie	n=3		
	sRGB	n=4		
	Classroom	n=7		
	Blackboard	n=8		
	User	n=5		
	3D	n=11		
Brightness		n= -50 - +50	P	F

Function				ASCII	Pass	Fail
Contrast			n= -50 - +50	-XX22 n	P	F
Sharpness			n= -15 - +15	-XX23 n	P	F
Saturation			n= -50 - +50	-XX45 n	P	F
Tint			n= -50 - +50	-XX44 n	P	F
Color Setting	Red Gain		n= -50 - +50	-XX24 n	P	F
	Green Gain		n= -50 - +50	-XX25 n	P	F
	Blue Gain		n= -50 - +50	-XX26 n	P	F
	Red Bias		n= -50 - +50	-XX27 n	P	F
	Green Bias		n= -50 - +50	-XX28 n	P	F
	Blue Bias		n= -50 - +50	-XX29 n	P	F
	Cyan		n= -50 - +50	-XX30 n	P	F
	Yellow		n= -50 - +50	-XX31 n	P	F
Magenta		n= -50 - +50	-XX32 n	P	F	
Reset		n=1	-XX33 n	P	F	
IMAGE /Advanced	BrilliantColor™		n= 0 - 10	-XX34 n	P	F
	Degamma	Film	n=1	-XX35 n	P	F
		Video	n=2			
		Graphics	n=3			
		PC	n=4			
	Color Temp.	Warm	n=1	-XX36 n	P	F
		Medium	n=2			
		Cold	n=3			
	Color Space	Auto	n=1	-XX37 n	P	F
		RGB	n=2			
		YUV	n=3			
	Input Source	VGA 1	n=5	-XX39 n	P	F
		Video	n=10			
	De-Interlace	On	n=1	-XX40 n	P	F
Off		n=2				

OSD/Display

Function				ASCII	Pass	Fail
Format	4:3	n=1		-XX60 n	P	F
	16:9-I	n=2				
	16:9-II	n=3				
	Native	n=6				
	Auto	n=7				

Function			ASCII	Pass	Fail
Overscan		n=0-10	-XX61 n	P	F
Zoom		n= -30~+50	-XX62 n	P	F
H Image Shift		n= -50 - +50	-XX63 n	P	F
V Image Shift (16:9)		n= -24 - +24	-XX64 n	P	F
V Keystone		n= -30 - +30	-XX66 n	P	F
3D	Off	n=1	-XX230 n	P	F
	DLP Link	n=2		P	F
	IR	n=3		P	F
3D Sync Invert	On/Off	n=1/n=2 &0	-XX231 n	P	F

OSD/Setup

Function			ASCII	Pass	Fail
Language	English	n=1	-XX70 n	P	F
	German	n=2			
	French	n=3			
	Italian	n=4			
	Spanish	n=5			
	Portuguese	n=6			
	Polish	n=7			
	Dutch	n=8			
	Swedish	n=9			
	Norwegian/Danish	n=10			
	Finnish	n=11			
	Greek	n=12			
	Traditional Chinese	n=13			
	Simplified Chinese	n=14			
	Japanese	n=15			
	Korean	n=16			
	Russian	n=17			
	Hungarian	n=18			
	Czechoslovak	n=19			
	Arabic	n=20			
	Thai	n=21			
	Turkish	n=22			
Projection	Front-Desktop	n=1	-XX71 n	P	F
	Rear-Desktop	n=2			
	Front-Ceiling	n=3			

Function			ASCII	Pass	Fail	
	Rear-Ceiling		n=4			
Menu Location	Top Left		n=1	~XX72 n	P	F
	Top Right		n=2			
	Center		n=3			
	Bottom Left		n=4			
	Bottom Right		n=5			
Signal	Automatic	Enable/Disable	n=1/n=0 & n=2	~XX91 n	P	F
	Frequency		n= 0-31	~XX73 n	P	F
	Phase		n= -5 - +5	~XX74 n	P	F
	H. Position		n= -5 - +5	~XX75 n	P	F
	V. Position		n= -5 - +5	~XX76 n	P	F
Security	Security Timer	Hour/Day/Month	nnnnnn	~XX77 n	P	F
	Change Password					send back the password to confirm
	Security Settings	On/Off	n=1/n=0 & n=2	~XX78 n	P	F
Projector ID			n=00-99	~XX79 n	P	F
Audio Settings	Mute	On/Off	n=1/n=2 & 0	~XX80 n	P	F
	Volume		n=0-10	~XX81 n	P	F
Advanced	Logo	Optoma/Neutral	n=1/n=2	~XX82 n	P	F
	Closed Captioning	On/Off	n=1/n=0 & n=2	~XX88 n	P	F

OSD/Option

Function			ASCII	Pass	Fail	
Source Lock	On/Off		n=1/n=2 & 0	~XX100 n	P	F
High Altitude	On/Off		n=1/n=2 & 0	~XX101 n	P	F
Information Hide	On/Off		n=1/n=2 & 0	~XX102 n	P	F
Background Color	Blue		n=1	~XX104 n	P	F
	Black		n=2			
	Red		n=3			
	Green		n=4			
	White		n=5			
Advanced	Direct Power On	On/Off	n=1/n=2 & 0	~XX105 n	P	F
	Signal Power On	On/Off	n=1/n=2 & 0	~XX113 n	P	F
	Auto Power Off (min)		n=0-180	~XX106 n	P	F

Appendices

Function			ASCII	Pass	Fail
	Sleep Timer (min)		n=000-995	~XX107 n	P F
	Power Mode(Standby)	ECO/Active	n=1/n=2 & 0	~XX114 n	P F
Lamp Setting	Lamp Hour		n=1	~XX108 n	nnnn F
	Lamp Reminder	On/Off	n=1/n=2 & 0	~XX109 n	P F
	Brightness Mode	Bright/STD	n=1/n=2	~XX110 n	P F
	Lamp Reset	Yes	n=1	~XX111 n	P F
No		n=2			
Reset	Yes	n=1	~XX112 n	P F	
	No	n=2			

Information Format:

INFOa	Standby Mode	a=0
	Warming up	a=1
	Cooling Down	a=2
	Out of Range	a=3
	Lamp Fail	a=4
	Thermal Switch Error	a=5
	Fan Lock	a=6
	Over Temperature	a=7
	Lamp Hours Running	
	Out	a=8

Function	RS232 command	Response		
Information display	~XX150 1	Okabbbbccdddde		
		a = Power State	On	a=1
			Off	a=0
		b = Lamp Hour		bbbb
		c = Input Source	None	c=0
			VGA	c=1
			Video	c=2
		d = Firmware Version		dddd
		e = Display mode	None	e=0
			Presentation	e=1

Function	RS232 command	Response		
			Bright	e=2
			Movie	e=3
			sRGB	e=4
			Blackboard	e=5
			Classroom	e=6
			User	e=7
			3D	e=8
Input Source	-XX121 1	Oka	None	a=0
			VGA	a=1
			Video	a=2
Software Version	-XX122 1	Okdddd		
Display Mode	-XX123 1	Oka	None	a=0
			Presentation	a=1
			Bright	a=2
			Movie	a=3
			sRGB	a=4
			Blackboard	a=5
			Classroom	a=6
			User	a=7
			3D	a=8
Power State	-XX124 1	Oka	On	a=1
			Off	a=0
Brightness	-XX125 1	Oka		
Contrast	-XX126 1	Oka		
Aspect Ratio	-XX127 1	Oka	4:3	a=0
			16:9-I	a=1
			16:9-II	a=2
			Native	a=3
			Auto	a=4
Color Temperature	-XX128 1	Oka	Warm	a=0
			Medium	a=1
			Cold	a=2
Projection Mode	-XX129 1	Oka	Front-Desktop	a=0
			Rear-Desktop	a=1

Appendices

Function	RS232 command	Response		
			Front-Ceiling	a=2
			Rear-Ceiling	a=3
Model Name	~XX151 1	Oka	ES515	a=1
RS232 Version No	~XX152 1	Oka		

Item	Key Definition		ASCII	Pass	Fail
1	Power	n=1	~XX140 n	P	F
2	Left	n=11		P	F
3	Enter	n=12		P	F
4	Right	n=13		P	F
5	Down	n=14		P	F
6	Keystone +/1	n=15		P	F
7	Keystone -/3	n=16		P	F
8	Zoom +/2	n=28		P	F
9	Zoom -/5	n=29		P	F
10	Freeze/4	n=23		P	F
11	Source/6	n=30		P	F
12	AV-Mute/7	n=24		P	F
13	Resync/8	n=31		P	F
14	Menu	n=20		P	F
15	Up	n=10		P	F

Ceiling Installation



- ❖ Damage to the projector as a result of incorrect installation voids the warranty.

To prevent damage to your projector please use the recommended mounting package for installation.

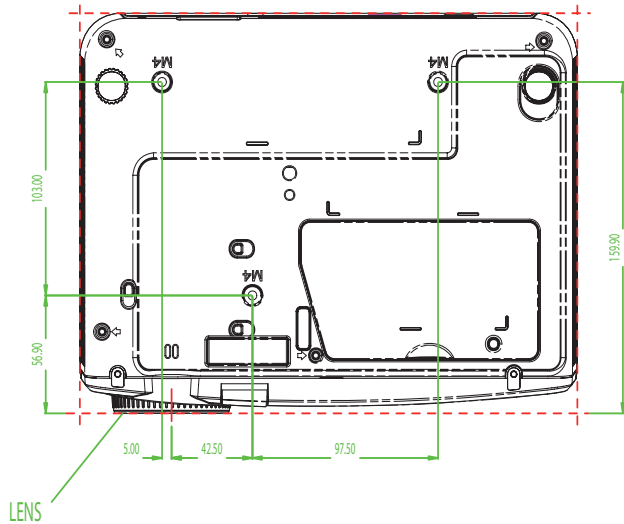
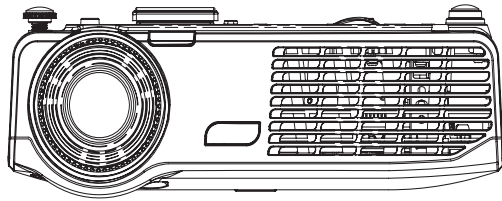
To ensure compliance, only use a UL Listed ceiling mount and screws that meet the following specifications:

- ▶ Screw Type: M4
- ▶ Maximum screw length: 8 mm
- ▶ Minimum screw length: 6 mm

Refer to the following diagram to ceiling mount the projector.



- ❖ Ensure at least 10cm clearance between the ceiling and the underside of the projector.
- ❖ Avoid locating the projector near heat sources such as air conditioning and heaters. Excess heat may cause the projector to power off.



Optoma Global Offices

For service or support please contact your local office.

USA

715 Sycamore Drive
Milpitas, CA 95035, USA
www.optomausa.com

Tel : 408-383-3700
Fax : 408-383-3702
Service : services@optoma.com

Canada

5630 Kennedy Road, Mississauga,
ON, L4Z 2A9, Canada
www.optoma.ca

Tel : 905-361-2582
Fax : 905-361-2581
Service : canadacsragent@optoma.com

Europe

42 Caxton Way, The Watford Business Park
Watford, Hertfordshire,
WD18 8QZ, UK
www.optoma.eu
Service Tel : +44 (0)1923 691865

Tel : +44 (0) 1923 691 800
Fax : +44 (0) 1923 691 888
Service : service@tsc-europe.com

France

Bâtiment E
81-83 avenue Edouard Vaillant
92100 Boulogne Billancourt, France

Tel : +33 1 41 46 12 20
Fax : +33 1 41 46 94 35
Service : savoptoma@optoma.fr

Spain

C/ José Hierro,36 Of. 1C
28522 Rivas VaciaMadrid,
Spain

Tel : +34 91 499 06 06
Fax : +34 91 670 08 32

Deutschland

Wertfstrasse 25
D40549 Düsseldorf,
Germany

Tel : +49 (0) 211 506 6670
Fax : +49 (0) 211 506 66799
Service : info@optoma.de

Optoma Scandinavia AS

Lerpeveien 25
3040 Drammen
Norway
PO.BOX 9515
3038 Drammen
Norway

Tel : +4732988990
FAX : +4732988999
Service : info@optoma.no

Latin America

715 Sycamore Drive
Milpitas, CA 95035, USA
www.optoma.com.br

Tel : 408-383-3700
Fax: 408-383-3702
www.optoma.com.mx

Taiwan

231,台北縣新店市民權路108號5樓
電話：+886-2-2218-2360
服務處：services@optoma.com.tw

傳真：+886-2-2218-2313
www.optoma.com.tw
asia.optoma.com

Hong Kong

Unit A, 27/F Dragon Centre, 79 Wing Hong Street,
Cheung Sha Wan Kowloon, Hong Kong
Tel : +852-2396-8968
www.optoma.com.hk

Fax: +852-2370-1222

China

上海市长宁区凯旋路1205号5楼
邮编：200052
www.optoma.com.cn

电话：+86-21-62947376
传真：+86-21-62947375

Japan

東京都足立区綾瀬 3-25-18
株式会社オーエスエム
E-Mail: info@osscreen.com

サポートセンター: 0120-46-5040
<http://www.os-worldwide.com/>

Korea

WOOMI TECH.CO.,LTD.
4F, Minu Bldg.33-14, Nonhyun-Dong,
Kangnam-Ku, seoul, 135-815,
KOREA

Tel : +82+2+34430004
Fax: +82+2+34430005

Regulation & Safety notices

This appendix lists the general notices of your projector.

FCC notice

This device has been tested and found to comply with the limits for a Class B digital device pursuant to Part 15 of the FCC rules. These limits are designed to provide reasonable protection against harmful interference in a residential installation. This device generates, uses, and can radiate radio frequency energy and, if not installed and used in accordance with the instructions, may cause harmful interference to radio communications.

However, there is no guarantee that interference will not occur in a particular installation. If this device does cause harmful interference to radio or television reception, which can be determined by turning the device off and on, the user is encouraged to try to correct the interference by one or more of the following measures:

- ▶ Reorient or relocate the receiving antenna.
- ▶ Increase the separation between the device and receiver.
- ▶ Connect the device into an outlet on a circuit different from that to which the receiver is connected.
- ▶ Consult the dealer or an experienced radio/television technician for help.

Notice: Shielded cables

All connections to other computing devices must be made using shielded cables to maintain compliance with FCC regulations.

Caution

Changes or modifications not expressly approved by the manufacturer could void the user's authority, which is granted by the Federal Communications Commission, to operate this projector.

Operation conditions

This device complies with Part 15 of the FCC Rules. Operation is subject to the following two conditions:

1. This device may not cause harmful interference, and
2. This device must accept any interference received, including interference that may cause undesired operation.

Notice: Canadian users

This Class B digital apparatus complies with Canadian ICES-003.

Remarque à l'intention des utilisateurs canadiens

Cet appareil numérique de la classe B est conforme à la norme NMB-003 du Canada.

Declaration of Conformity for EU countries

- ▶ EMC Directive 2004/108/EC (including amendments)
- ▶ Low Voltage Directive 2006/95/EC
- ▶ R & TTE Directive 1999/5/EC (if product has RF function)

Disposal instructions



Do not throw this electronic device into the trash when discarding. To minimize pollution and ensure utmost protection of the global environment, please recycle it.