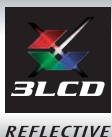


# An incredible cinematic experience in the comfort of your home



EH-R1000

EH-R4000

Breakthrough 3LCD Reflective technology delivers full HD imagery in wide-screen splendour – experience a night at the movies without having to leave home.

- **Breathtaking theatre experience**  
3LCD Reflective technology and mega contrast ratio of 1,000,000:1 combine to deliver the highest movie quality
- **Installation flexibility**  
Its super compact design and expansive lens shift range allow installation in any preferred location
- **Smart, compact design**  
Matches easily in any environment with its stylishly compact design
- **Designed for your convenience**  
Enjoy a host of features such as lens position memory for 2.40:1, anamorphic lens support, network, and remote monitoring



Breakthrough 3LCD Reflective technology delivers full rich HD imagery in wide-screen splendour – experience a night at the movies without having to leave home.



EH-R1000



EH-R4000

## BREATHTAKING THEATRE EXPERIENCE

### Astounding contrast ratio of 1,000,000:1

Our new home cinema projectors give you more reasons to stay home. Now, enjoy movies with richly detailed film-like quality from the comfort of your home theater. 3LCD Reflective technology and Epson's first Mega contrast (up to 1,000,000:1 with EH-R4000) combine to make these new Epson 1080p home cinema projectors a truly moving way to experience all that cinema has to offer.

### New ultra smooth auto iris for optimal contrast

Differences in brightness can result in loss of detail, especially with quick cuts between dark and light scenes. Epson's new ultra smooth auto iris employs a newly designed motor and iris that speed response, adjusting to provide optimum contrast and brightness for each scene. Brilliant scenes are crisp and clear while dark scenes retain all the detail of the original movie.

### DEEPBLACK technology for a darker shade of black

Acclaimed by discriminating home cinema enthusiasts worldwide, Epson's DEEPBLACK technology adds incredible depth to movies. By precisely controlling polarisation and dramatically reducing light leakage, you'll enjoy both jet blacks and dazzling whites at an amazing 1,000,000:1 contrast ratio\*.

\* EH-R4000 - world's first mega contrast 1,000,000 : 1  
EH-R1000 - 500,000:1 contrast ratio

## DEEPBLACK



Without DEEPBLACK



With DEEPBLACK

## Brilliant, grain-free images with lifelike motion

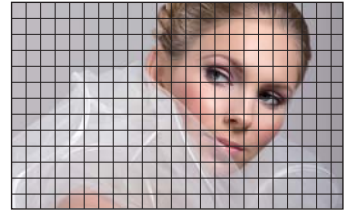
The high aperture ratio of the 0.74" Full HD (1920 x 1080p) panel and tight inter-pixel spacing deliver bright, dot-free images with a quality like that of film itself. Combined with improved high-speed motion response, you'll catch every hard-hitting action scene with stunning realism.



Transmissive LCD panel



3LCD Reflective panel



Minimised pixel spacing produces brilliant, grain-free images.

Transmissive LCD panel

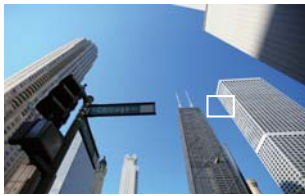


3LCD Reflective panel



## Bring sharpness and clarity to details

The new HQV Vida processor utilises precise I/P conversion and scaling for sharp, finely detailed images and smooth, lifelike motion.



Less raster artifacts (jaggies)



Without HQV Vida



With HQV Vida



Less mosquito noise



Without HQV Vida



With HQV Vida



Super-resolution technology reveals details that other projectors can't by improving resolution and allowing you to enjoy high-definition quality even from low-resolution videos.



Without super-resolution technology



With super-resolution technology

Frame interpolation eliminates flicker and frame-to-frame judder, which is common when using Blu-ray discs, thanks to a constant 1080p frame-rate output of up to 120 Hz.

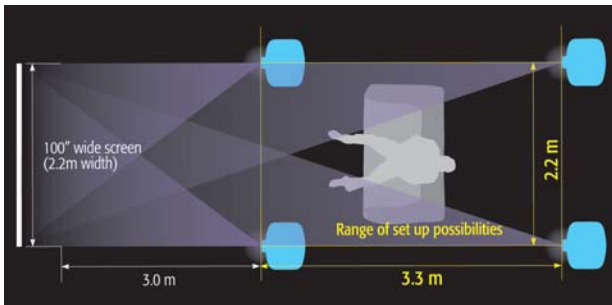


## INSTALLATION FLEXIBILITY

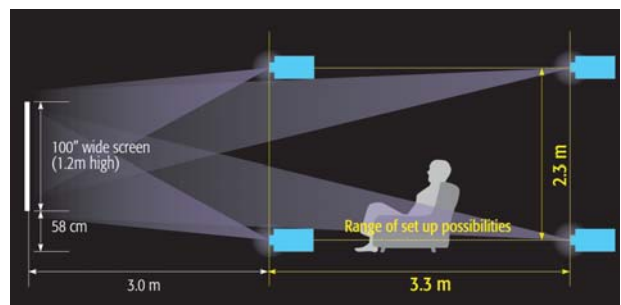
### 2.1x zoom and expansive lens-shift range

The wide zoom ratio of the lens gives you freedom to configure a system that fits nearly any environment while its short focal-length can fill a 100-inch screen from as close as 3.0 meters. In addition, the lens shift range allows off-center alignment of the projector 85% vertically and 40% horizontally without compromising image shape or quality.

When projecting a 16:9 area to a 100-in. wide screen



Horizontal installation



Vertical installation

### Super bright projection light

Equipped with a small, highly luminescent and long-lasting E-TORL lamp, these projectors throw out an impressive 1,200 ANSI lumens. Now you can enjoy bright, clear images on large screens even with substantial ambient lighting.



## SMART, COMPACT DESIGN

### Stylishly compact, wonderfully functional

A super-compact design and centrally located lens make it easy to install on a ceiling or shelf, keeping your home theatre neat. The matte finish prevents light from reflecting off the projector surface, reducing distractions when viewing.



### Illuminated remote control

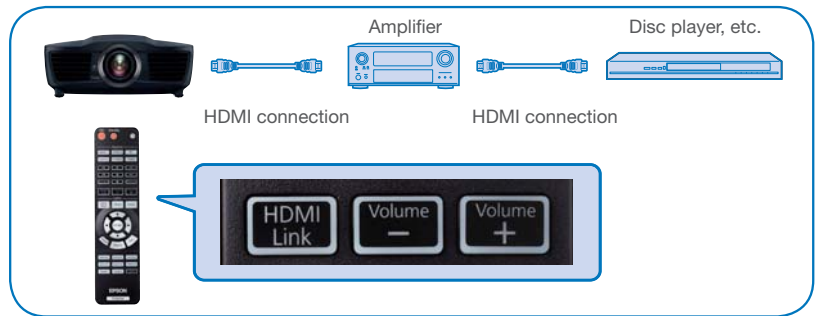
Conveniently sized and designed for supreme ease of use, the remote control is equipped with buttons that can be softly lit — ideal for sure, unobtrusive operation in darkened rooms.



## DESIGNED FOR YOUR CONVENIENCE

### HDMI link

HDMI-CEC compatible audio-video devices connected to the projector can be controlled from one remote control. Power devices on and off, adjust the volume of a connected amplifier or perform other operations without having to use individual remotes.



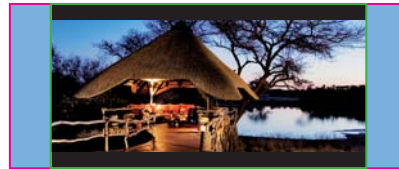
### Lens position memory (for 2.40:1 projection area)

Store up to three settings in the projector memory, including zoom and focus positions for standard 16:9 or 4:3 projection areas, and wide cinema ratio. The projector automatically detects the aspect ratio then and retrieves the one proper setting, or you can manually recall a setting using the remote control.

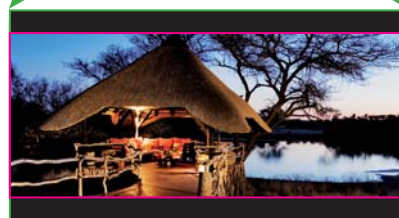


Screen

When using a 2.40:1 screen (pink outline), a 16:9 image is projected without using the right and left sides of the screen.



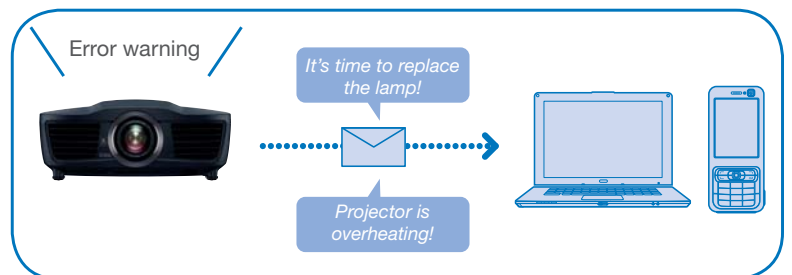
However, many movies have black bars at the top and bottom.



Users can utilise the full screen by enlarging the image. After saving the position in memory, it can be selected easily at the next viewing.

### Network ready and off-site monitoring

Should troubles arise, your service representative can monitor and troubleshoot projector problems remotely without having to visit your home. There is also a mail notification function that sends an e-mail to a designated person should a problem arise.



### Anamorphic lens support

Support for anamorphic lenses (such as Panamorph series) means you can view movies without annoying "letterbox" bars at the top and bottom of the screen. Enjoy films in full screen without distortion, just as the film directors intended. Fully motorised and remote-controlled, these lenses convert 16:9 format to 2.40:1 cinemascope widescreen.

## ADDITIONAL FEATURES

- x.v.Color, Deep Color for faithful colour reproduction
- Stunning picture uniformity and clarity — state-of-the-art lens by Fujinon
- Amazing, true-to-life colour — Epson exclusive cinema filter with an expanded colour gamut and new colour reproduction feature
- Cutting-edge connectivity — two HDMI ports for maximum flexibility
- Imaging Science Foundation (ISF) calibration and colour management features (EH-R4000 only)
- 24p compatible
- Motorised zoom, focus and lens shift function
- Front intake and exhaust vents reduce installation space
- Quiet 21 dB operation
- Variable colour modes for different content
- AMX and Crestron certified (EH-R4000 only)

### Eco Features

- Equipped with Epson proprietary lamp that is engineered to maximise light usage efficiency
- Uses 0.27W of power in standby mode
- Projector optics employ lead-free lenses
- Unpainted plastic housing reduces the environmental impact
- The flame retardants used in the plastic housing do not contain chlorine or bromine

Better Products for a Better Future™

For more information on Epson's environmental programmes, visit [www.epson.com/environment](http://www.epson.com/environment)

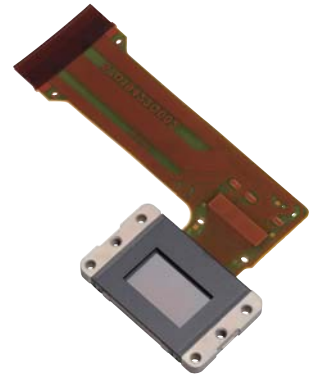
# Breakthrough 3LCD Reflective technology that simply thrills.



Enjoy a breathtaking cinematic experience in the comfort of your home. Discover the difference with Epson's world's first reflective 3LCD projector using HTPS technology, which immerses you in rich full HD imagery in wide screen splendour.

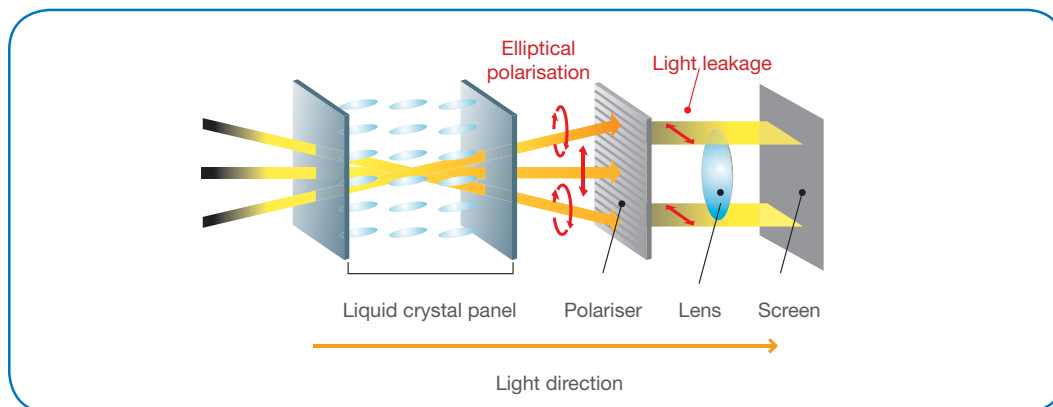
## New panels provide extreme black for superlative contrast

Epson's exclusive 3LCD Reflective technology delivers rich, superbly detailed video that exhibit smoother texture and richer blacks than ever before. Other projectors which employ transmissive LCD optical systems experience light leakage that results in decreased light intensity making it difficult to reproduce the deep blacks needed to heighten contrast. This 3LCD Reflective system prevents light leakage and is able to vastly boost image contrast. Together with a new ultra smooth Auto Iris and our renowned DEEPBLACK technology, the end result is a mega contrast ratios at up to 1,000,000 : 1\* – you have to see it to believe it.



\* EH-R4000 - world's first mega contrast 1,000,000 : 1  
EH-R1000 - 500,000:1 contrast ratio

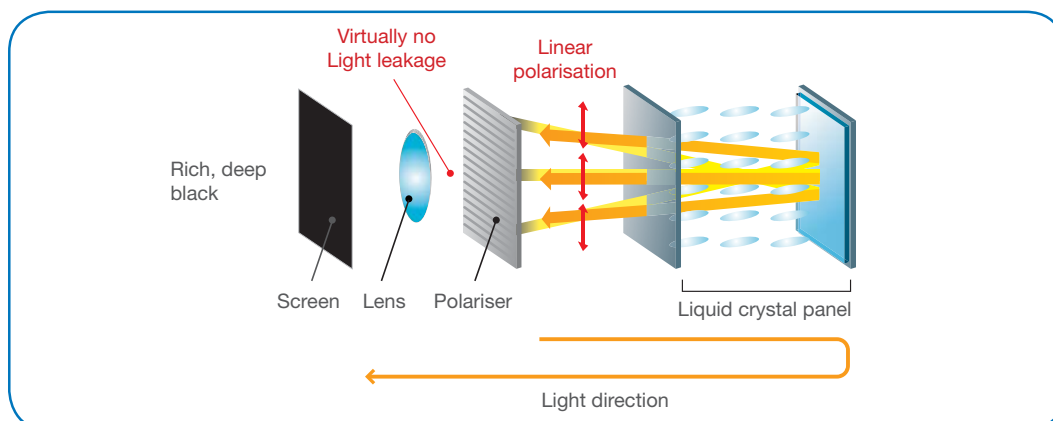
3LCD system with transmissive LCD



Variation of polarisation occurs when light is transmitted through liquid crystal panels. These variations are hard to correct and sometimes cause light leakage.

Note: Illustrations shown above are conceptual drawings and do not show actual placement.

3LCD Reflective system



Light reflection reduces and corrects variation of polarisation. This enables rich, deep blacks.

# Colour Light Output

- an easy way to evaluate projector colour output

## What is Colour Light Output?

Colour Light Output (CLO) is a specification that provides critical information on a projector's ability to deliver colour. Developed by colour scientists using the same approach as White Light Output (Brightness) measurement, Colour Light Output provides the buyer with additional key information about colour.

## Does Brightness measure colour?

No. Current product specifications such as Brightness (or White Light Output), Contrast Ratio and Resolution give no information regarding a projector's ability to reproduce colour. The existing Brightness specification only measures the total amount of White Light projected. It does not measure colour – in fact, many manufacturers artificially boost brightness by adding white light, which dilutes the projector's colour brightness.

## Why is Colour Light Output important?

Colour Light Output is critically important because it measures the brightness of Red, Green and Blue. Red, Green and Blue create white when combined in the right proportions. They also comprise the input signal that tells your projector how to reproduce colour images. Beautifully balanced colour is possible when bright Red, Green and Blue combine to produce the brightness equal to White. Colour Light Output provides users with an additional way to evaluate a projector and make more discerning buying decisions.

## Is Colour Light Output the same in all projectors?

No. There are vast differences in the Colour Light Output of projectors on the market today. Look at the images below from two competing projectors

3LCD Projector



Image #1\*

Brand X



Image #1\*



Image #2\*



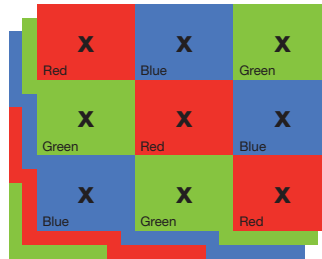
Image #2\*

Colour Light Output specification describes the difference in colour between these two projectors.

## How is Colour Light Output measured?

X	X	X
X	X	X
X	X	X

**Brightness (or White Light Output)** measures the total amount of white light projected in lumens on a nine point grid. It does not measure colour.



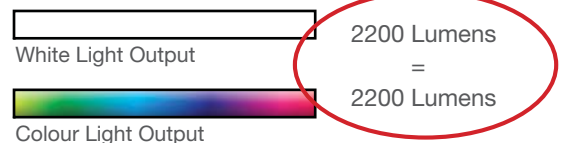
**Colour Light Output** uses 3 sets of a nine-point grid to measure the primary colours - red, green and blue, using the same approach used to measure White Light Output in lumens.

## How should Colour Light Output be used?

Colour Light Output should be used with White Light Output to provide insight into a projector's overall picture quality. Two things to remember:

1. Select High Colour Light Output.
2. Make sure the Colour Light Output equals the White Light Output.

3LCD Projector High CLO



Brand X Low CLO



When selecting a projector, ask for the Colour Light Output measurement.



\* Actual photographs of images produced by 2 competing projectors run in default mode. Price, Resolution and Brightness (White Light Output) are the same for both projectors.



175mm (6.88")  
370mm (14.56")  
440mm (17.32")  
Weight 9 kg/19.8 lb

## EH-R1000/R4000

### SPECIFICATIONS

<b>SUPPLIED ACCESSORIES</b> Power Cable 3.0m Computer Cable 1.8m, HD15 / HD15 Remote Control With AA type alkaline batteries x 2 User's Manual Set HDMI Cable Clamp x 2	<b>MODEL NUMBER</b>	EH-R1000	EH-R4000																																	
	<b>PROJECTION SYSTEM</b>	RGB liquid crystal shutter projection system																																		
<b>OPTIONAL ACCESSORIES</b> Spare Lamp ELPLP59 Air Filter ELPAF28	<b>PROJECTION METHOD</b>	Front / Rear / Ceiling mount																																		
	<b>CONNECTOR PANEL</b>	<p>1 PC 2 Component Y 3 Component Cb/Pb 4 Component Cr/Pr 5 Video 6 S-Video 7 HDMI 1 8 HDMI 2 9 RS-232C 10 Trigger Out 11 Trigger Out 1 12 Trigger Out 2</p>  																																		
<b>CONNECTIONS</b> EH-R1000 EH-R4000	<b>SPECIFICATION OF MAIN PARTS</b>	<table border="1"> <tr> <td rowspan="4">LCD</td> <td>SIZE</td> <td colspan="2">0.74-inch wide panel, Reflective HTPS</td> </tr> <tr> <td>DRIVING METHOD</td> <td colspan="2">Poly-silicon TFT active matrix</td> </tr> <tr> <td>PIXEL NUMBER</td> <td colspan="2">2073600 dots (1920 x 1080) x 3</td> </tr> <tr> <td>NATIVE RESOLUTION</td> <td colspan="2">1080p</td> </tr> <tr> <td rowspan="4">PROJECTION LENS</td> <td>TYPE</td> <td colspan="2">Optical zoom (Powered) / Focus (Powered)</td> </tr> <tr> <td>F-NUMBER</td> <td colspan="2">2.5 - 3.7</td> </tr> <tr> <td>FOCAL LENGTH</td> <td colspan="2">21.3 - 44.7 mm</td> </tr> <tr> <td>ZOOM RATIO</td> <td colspan="2">1 - 2.1</td> </tr> <tr> <td rowspan="2">LAMP</td> <td>TYPE</td> <td colspan="2">200 W UHE (E-TORL)</td> </tr> <tr> <td>LIFE (NORMAL/ECO)</td> <td colspan="2">4000 hours / 5000 hours</td> </tr> </table>		LCD	SIZE	0.74-inch wide panel, Reflective HTPS		DRIVING METHOD	Poly-silicon TFT active matrix		PIXEL NUMBER	2073600 dots (1920 x 1080) x 3		NATIVE RESOLUTION	1080p		PROJECTION LENS	TYPE	Optical zoom (Powered) / Focus (Powered)		F-NUMBER	2.5 - 3.7		FOCAL LENGTH	21.3 - 44.7 mm		ZOOM RATIO	1 - 2.1		LAMP	TYPE	200 W UHE (E-TORL)		LIFE (NORMAL/ECO)	4000 hours / 5000 hours	
	LCD	SIZE	0.74-inch wide panel, Reflective HTPS																																	
DRIVING METHOD		Poly-silicon TFT active matrix																																		
PIXEL NUMBER		2073600 dots (1920 x 1080) x 3																																		
NATIVE RESOLUTION		1080p																																		
PROJECTION LENS	TYPE	Optical zoom (Powered) / Focus (Powered)																																		
	F-NUMBER	2.5 - 3.7																																		
	FOCAL LENGTH	21.3 - 44.7 mm																																		
	ZOOM RATIO	1 - 2.1																																		
LAMP	TYPE	200 W UHE (E-TORL)																																		
	LIFE (NORMAL/ECO)	4000 hours / 5000 hours																																		
<b>OPERATING CONDITIONS</b>	<b>BRIGHTNESS*</b>	<table border="1"> <tr> <td>WHITE LIGHT (NORMAL/ECO)</td> <td colspan="2">1200 lumens</td> </tr> <tr> <td>COLOUR LIGHT (NORMAL ECO)</td> <td colspan="2">1200 lumens</td> </tr> </table>		WHITE LIGHT (NORMAL/ECO)	1200 lumens		COLOUR LIGHT (NORMAL ECO)	1200 lumens																												
	WHITE LIGHT (NORMAL/ECO)	1200 lumens																																		
COLOUR LIGHT (NORMAL ECO)	1200 lumens																																			
<b>PERFORMANCE</b>	<b>CONTRAST RATIO**</b>	500,000:1	1,000,000:1																																	
	<b>SCREEN SIZE (PROJECTED DISTANCE)</b>	<table border="1"> <tr> <td>30" to 300" [0.83 to 18.19 m]</td> <td colspan="2"></td> </tr> <tr> <td>100" [2.83 - 6.04 m]</td> <td colspan="2"></td> </tr> </table>		30" to 300" [0.83 to 18.19 m]			100" [2.83 - 6.04 m]																													
30" to 300" [0.83 to 18.19 m]																																				
100" [2.83 - 6.04 m]																																				
<b>THROW RATIO</b>	<b>THROW RATIO</b>	1.28 (Zoom: Wide), 2.73 (Zoom: Tele)																																		
	<b>SOUND OUTPUT (INTERNAL SPEAKER)</b>	N/A																																		
<b>CONNECTIVITY</b>	<b>CONNECTIVITY</b>	<table border="1"> <tr> <td rowspan="2">VIDEO INPUT</td> <td>RCS (Red / Green / Blue) x 1 set</td> <td colspan="2"></td> </tr> <tr> <td>RCA (Yellow) x 1</td> <td colspan="2"></td> </tr> <tr> <td>COMPUTER INPUT</td> <td>D-Sub 15 Pin (RGB) x 1</td> <td colspan="2"></td> </tr> <tr> <td>DIGITAL</td> <td>HDMI x 2</td> <td colspan="2"></td> </tr> <tr> <td rowspan="2">CONTROL INPUT</td> <td>D-Sub 9 Pin x 1</td> <td colspan="2"></td> </tr> <tr> <td>3.5 mm Mini-jack x 1</td> <td colspan="2">3.5 mm Mini-jack x 2</td> </tr> <tr> <td>NETWORK INPUT</td> <td>N/A</td> <td colspan="2">RJ45 x 1</td> </tr> </table>		VIDEO INPUT	RCS (Red / Green / Blue) x 1 set			RCA (Yellow) x 1			COMPUTER INPUT	D-Sub 15 Pin (RGB) x 1			DIGITAL	HDMI x 2			CONTROL INPUT	D-Sub 9 Pin x 1			3.5 mm Mini-jack x 1	3.5 mm Mini-jack x 2		NETWORK INPUT	N/A	RJ45 x 1								
	VIDEO INPUT	RCS (Red / Green / Blue) x 1 set																																		
RCA (Yellow) x 1																																				
COMPUTER INPUT	D-Sub 15 Pin (RGB) x 1																																			
DIGITAL	HDMI x 2																																			
CONTROL INPUT	D-Sub 9 Pin x 1																																			
	3.5 mm Mini-jack x 1	3.5 mm Mini-jack x 2																																		
NETWORK INPUT	N/A	RJ45 x 1																																		
<b>OPERATING TEMPERATURE</b>	<b>OPERATING TEMPERATURE</b>	5 °C to 35 °C <41 °F to 95 °F>																																		
	<b>OPERATING ALTITUDE</b>	0 m to 2286 m <0 ft to 7500 ft>																																		
<b>START-UP PERIOD</b>	<b>START-UP PERIOD</b>	50 seconds																																		
	<b>DIRECT POWER ON / OFF</b>	Yes / (N/A)																																		
<b>COOL-DOWN PERIOD</b>	<b>COOL-DOWN PERIOD</b>	16 seconds																																		
	<b>POWER SUPPLY VOLTAGE</b>	100-240 V AC +/- 10% , 50/60 Hz																																		
<b>POWER CONSUMPTION</b>	<b>POWER CONSUMPTION</b>	<table border="1"> <tr> <td rowspan="2">220-240V</td> <td>LAMP ON</td> <td colspan="2">280 W</td> </tr> <tr> <td>STANDBY</td> <td colspan="2">0.27 W (Network off)</td> </tr> </table>		220-240V	LAMP ON	280 W		STANDBY	0.27 W (Network off)																											
	220-240V	LAMP ON	280 W																																	
STANDBY		0.27 W (Network off)																																		
<b>DIMENSIONS EXCLUDING FEET (D X W X H)</b>	<b>DIMENSIONS EXCLUDING FEET (D X W X H)</b>	370 x 440 x 175 mm																																		
	<b>WEIGHT</b>	Approx. 19.8 lb / 9.0 kg																																		
<b>FAN NOISE (NORMAL/ECO)</b>	<b>FAN NOISE (NORMAL/ECO)</b>	28 dB / 21 dB																																		

\* Colour mode: Dynamic, Zoom: Wide, Lens shift: V 5:5 / H Center

\*\* Colour mode: Dynamic; Power consumption: Normal; Zoom: Wide; Lens shift: V 10:0 / H Center

EPSON is the registered trademark of Seiko Epson Corporation.

All other product names and other company names used herein are for identification purposes only and are the trademarks or registered trademarks of their respective owners.

EPSON disclaims any and all rights in those marks. Scan/Print samples shown herein are simulations. The actual product design and contents may vary. Specifications are subject to change without notice.