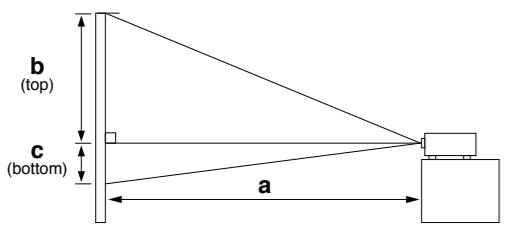


## SPECIFICATIONS

Model name	CP-X3511	CP-X3011	CP-X2511	CP-X2011
Liquid crystal panel	0.63 type (inch), 1.6cm polysilicon active-matrix TFT x 3			
Number of pixels	786,432 pixels (H1,024 x V768)			
Resolution	1,024 x 768 color pixels (XGA)			
Manual zoom	x1.2			
Lamp	210W UHP		190W UHP	
Light output (brightness)	3,500 Lumens	3,200 Lumens	2,700 Lumens	2,200 Lumens
Contrast ratio	2,000:1 (iris on)		500:1	
Audio	16W mono (8W x 2) Auto Vertical Keystone			
Keystone correction	AC100-120V/AC220-240V			
Power supply	5-35°C (41-95°F)			
Operating temperature	VGA, SVGA, XGA, WXGA, SXGA, SXGA+, UXGA, MAC16"			
Input signals	NTSC, NTSC4.43, PAL, SECAM, M-PAL, N-PAL HDTV: 720p@50/60, 1080i@50/60, 1080p@50/60 SDTV: 480i, 480p, 576i, 576p			
Video input	S-Video: Mini Din 4-pin x 1, Composite video: RCA jack x 1, Component video: RCA jack x 3			
Input/output terminals	Stereo Mini jack x 2, RCA jack x 2 (L/R)			
Video output	Analog RGB: 15-pin Mini-Dsub x 2			
Audio input	RCA jack x 2 (L/R)			
Computer input	Analog RGB: 15-pin Mini-Dsub x 1			
Audio output	USB type B x 1 for mouse control			
Monitor output	9-pin Dsub x 1 for RS232C			
USB	UL/cUL, FCC Part15 class B, AS/NZS CISPR22 class B, CE, GÖST-R			
Control	317 x 98 x 288mm (12.48" x 3.86" x 11.34") [excluding protruding part]			
Agency certifications	3.6kg (7.9 lbs.)			
Dimensions (WxHxD)	Computer cable, Remote Control, Batteries, Lens cap, Power cord, User's manual, Security label			
Weight	Lamp: DT01021, Filter set: MU06481, RC-008, Soft case: CA3010			
Standard accessories				
Optional accessories				

## PROJECTION DISTANCE

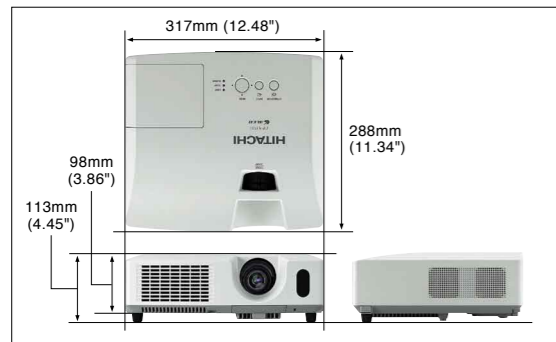
**a**: LCD projector-to-screen distance  
**b**: Screen height from lens center to top  
**c**: Screen height from lens center to bottom



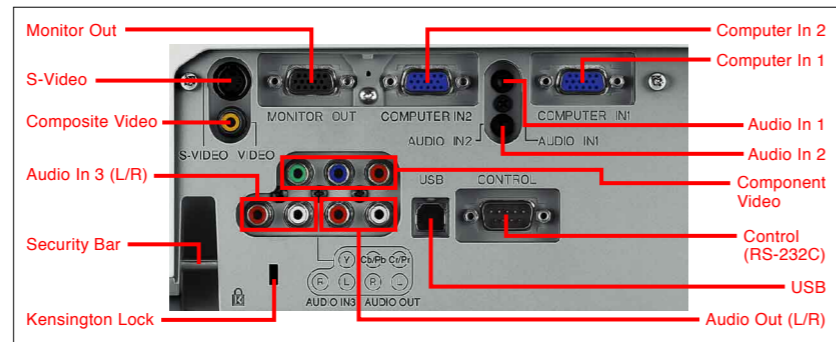
Screen Size (4:3 Screen)	a Min	a Max	b (top)	c (bottom)
30 type (inch), 0.8m	0.9m (34")	1.0m (41")	41cm (16")	5cm (2")
40 type (inch), 1.0m	1.2m (46")	1.4m (55")	55cm (22")	6cm (2")
50 type (inch), 1.3m	1.5m (58")	1.8m (69")	69cm (27")	8cm (3")
60 type (inch), 1.5m	1.8m (70")	2.1m (83")	82cm (32")	9cm (4")
70 type (inch), 1.8m	2.1m (82")	2.5m (97")	96cm (38")	11cm (4")
80 type (inch), 2.0m	2.4m (94")	2.8m (112")	110cm (43")	12cm (5")
90 type (inch), 2.3m	2.7m (106")	3.2m (126")	123cm (49")	14cm (5")
100 type (inch), 2.5m	3.0m (118")	3.6m (140")	137cm (54")	15cm (6")
120 type (inch), 3.0m	3.6m (142")	4.3m (168")	165cm (65")	18cm (7")
150 type (inch), 3.8m	4.5m (178")	5.3m (211")	206cm (81")	23cm (9")
200 type (inch), 5.1m	6.0m (237")	7.1m (281")	274cm (108")	30cm (12")
250 type (inch), 6.4m	7.5m (297")	8.9m (352")	343cm (135")	38cm (15")
300 type (inch), 7.6m	9.1m (357")	10.7m (422")	411cm (162")	46cm (18")

\* Tolerance ±8% (for projection distance a) • Final specifications may vary slightly.

## DIMENSIONS



## TERMINALS



## Consideration for the Environment

### Compliance with EU Directive RoHS\*1

\*1 RoHS is the acronym of "DIRECTIVE 2002/95/EC OF THE EUROPEAN PARLIAMENT AND OF THE COUNCIL of 27 January 2003 on the restriction of the use of certain hazardous substances in electrical and electronic equipment".

### Reduction of resin usage in production

Use of hot runners in molds for making upper housing in order to reduce mill ends.

### Reduction of CO<sub>2</sub> emissions

Carton volume has been cut down to 75%\*2, reducing CO<sub>2</sub> emissions during transport.  
\*2 Compared to Hitachi CP-X201 projector on the basis of one carton box.

### Power saving mode engaged during standby

### ECO mode

ECO mode provides power saving.

• Design and specifications are subject to change without notice.

- The projected images and comparison photos in this catalog are simulations.
- LCD panels, polarizers and other optical components and cooling fans may need replacement after prolonged usage. For more details, please consult a Hitachi sales representative.
- Do not use in places where there is a lot of water, dampness, steam, dust, soot or tobacco smoke. This may result in fire or malfunction.
- Optical components (lamp, LCD panel, polarizing plate, PBS (polarizer beam splitter)) have limited service lives. They must be repaired or replaced if they are used for a long period of time.
- These projectors use a mercury lamp with high internal pressure. Because of its properties, this lamp may burst with a loud noise or burn out if it has been used for a period of time. The time until it bursts or burns out varies greatly according to differences between lamps and usage conditions. Turning the lamp's power on and off frequently shortens its service life.
- Optical components other than the lamp: If the projector is used for six hours or more per day, they may need to be replaced in less than a year.
- LCD panel: If the projector is used continuously for six hours or more, its replacement cycle may be shortened.
- Do not turn projector on again for ten minutes after shutdown. Neglect can shorten the lifetime of the lamp. During use and immediately after use, do not touch anywhere near the lamp and the vents as these parts are extremely hot.



# HITACHI

Hitachi America, Ltd., Digital Media Division, Business Solutions Group 900 Hitachi Way, Chula Vista, CA 91914-3556, U.S.A. and Canada  
Tel: +1-800-HITACHI Fax: +1-619-591-5418 [www.hitachi-america.us/digitalmedia](http://www.hitachi-america.us/digitalmedia)  
Hitachi Home Electronics Asia (S) Pte. Ltd. 438A Alexandra Road #01-01/02/03, Alexandra Technopark, Singapore 119967  
Tel: +65-6536-2520 Fax: +65-6536-2521 [www.hitachiconsumer.com.sg](http://www.hitachiconsumer.com.sg)  
Hitachi Sales (Malaysia) Sdn. Berhad (11543-V) Lot 12, Jalan Kemajuan, Bangi Industrial Estate, 43650 Bandar Baru Bangi, Selangor Darul Ehsan, Malaysia.  
Tel: +60-3-8926-4168 Fax: +60-3-8926-3013 [www.hitachiconsumer.com.my](http://www.hitachiconsumer.com.my)  
Hitachi Sales (Thailand), Ltd. 994 Soi Thonglor, Sukhumvit 55 Road, Klongtonnua, Vadhana Bangkok 10110, Thailand  
Tel: +66-2381-8381-98 Fax: +66-2381-0210/2381-0021 [www.hitachi-th.com](http://www.hitachi-th.com)  
Hitachi (Hong Kong), Ltd. 18th Floor, Ever Gain Centre, 28 On Muk Street, Shatin, N.T., Hong Kong Tel: +852-2113-8883 Fax: +852-2783-4178 [www.hitachi-hk.com.hk](http://www.hitachi-hk.com.hk)  
Hitachi Sales Corp. of Taiwan 2nd Floor, No.65, Nanking East Road, Section 3, Taipei 104, Taiwan Tel: +886-2-2516-0500 Fax: +886-2-2516-1501 [www.hsct.com.tw](http://www.hsct.com.tw)  
Hitachi Australia Pty Ltd. Level 3, 82 Waterloo Road, North Ryde, NSW 2113, Australia Tel: +61-2-9888-4100 Fax: +61-2-9888-4188 [www.hitachi.com.au](http://www.hitachi.com.au)  
Hitachi Europe Ltd. Whitebrook Park, Lower Cookham Road, Maidenhead, Berkshire, SL6 8YA, UK Tel: +44-1628-585000 Fax: +44-1628-643404 [www.hitachidigitalmedia.com](http://www.hitachidigitalmedia.com)

Printed in Japan (H) NM-E351 0410

LCD Projectors

CP-X3511/CP-X3011/CP-X2511/CP-X2011

**HITACHI**  
Inspire the Next



**Outstanding projectors for all types of classrooms.**



**CP-X3511** 3,500 Lumens  
**CP-X3011** 3,200 Lumens  
**CP-X2511** 2,700 Lumens  
**CP-X2011** 2,200 Lumens



These do-it-all projectors are packed with practical and convenient functions.



LCD Projector  
**CP-X3511**  
3,500 Lumens



LCD Projector  
**CP-X3011**  
3,200 Lumens



LCD Projector  
**CP-X2511**  
2,700 Lumens



LCD Projector  
**CP-X2011**  
2,200 Lumens

### High Picture Quality

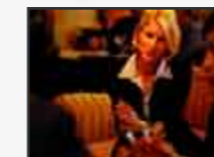
#### 2,000:1 High Contrast Ratio

CP-X3511/CP-X3011/CP-X2511

In addition to a high 2,000:1 contrast ratio, the CP-X3511, CP-X3011 and CP-X2511 feature an Active Iris that is automatically controlled to ensure best image contrast and depth perspective during both bright and dark scenes.



Bright scene



Dark scene

### Versatile Security

#### Various Security Functions

These projectors are equipped with a security bar that allows the attachment of a security chain. By using the PIN Lock, you can limit the number of users. The MyScreen function can be used to identify the owner, and is also protected by a PIN Lock. A Transition Detector can prevent unauthorized use of the projector.



Security bar

### Outstanding Usability

#### Power Saving Mode

The Power Saving mode at standby setting reduces standby power consumption to less than 1W. The following features are disabled: RS-232C control except power-on command, and audio capability including audio pass through.

### Template Function\*

When projecting onto a whiteboard, blackboard, etc., this function projects lines, making writing on the board easier. You can choose four types of lines: black lines on a white background, black lines on a white grid, white lines on a black background or white lines on a black grid. \* Patent pending



### 16W Internal Speaker

The projectors have two built-in 8W high power speakers. They provide you with a convenient audio solution for larger rooms.

### Audio Pass Through\*

Audio can be output via external speakers in standby condition. This saves lamp life when only sound is required.

\* When in Normal mode at standby setting. It does not function in Saving mode.

### Blackboard or Whiteboard Modes at Picture Setting

In rooms with no screen, it is possible to project onto a blackboard or whiteboard. The Blackboard mode can be used with both black and green blackboards. The Whiteboard mode reduces the white signal brightness to half, ensuring optimum visibility.



Normal mode



Whiteboard mode

### Daytime Mode

Projected images may sometimes be difficult to see under bright lighting. The Daytime Mode uses image quality correction technology to counter the effects of light, ensuring clear, vivid images.



Normal mode



Daytime mode

### Input Source Naming

The input source name can be changed to the name of a device you often use (desktop PC, DVD, etc.) instead of default names like computer in 1, S-Video, etc. Icons are displayed for easy visibility.



### Other Features

- Low Noise of 29dB\* (ECO Mode)
- 4-Second Quick Start • Direct Power On/Off
- My Button • My Text • Resolution Preset and Custom Modes • Auto Vertical Keystone Correction • Motion Adaptive Progressive Scan • 3:2 Pull Down • Noise Reduction
- Equalizing Gamma Function • IR Remote Frequency Change • Serial No. Label on Side • Security Label Included
- My Source/Document Camera Button on Remote Controller • Closed Caption
- Compatible with AMX Device Discovery

\* Typical. Tested in 23°C environmental conditions.

### Superior Maintenance Functions

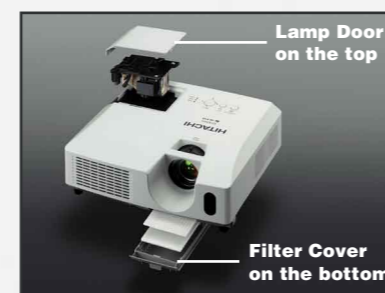
#### Hybrid Filter

The Hybrid Filter requires less frequent maintenance and cleaning, making longer operation possible.



#### Easy Maintenance

The lamp door is on the top and the filter cover slides in and out from the front bottom, so maintenance and replacement of these parts can be done easily.



Lamp Door on the top

Filter Cover on the bottom