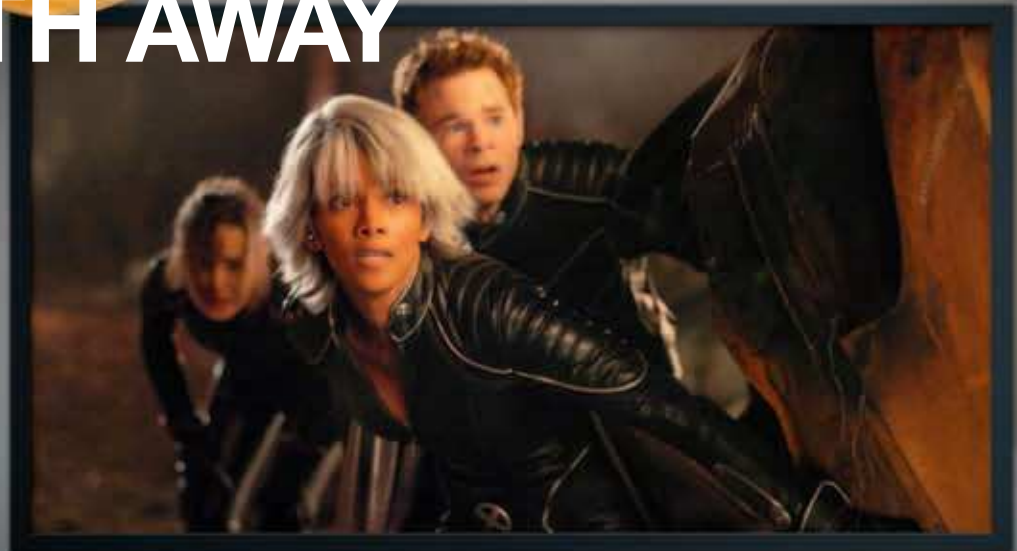


TAKES YOUR BREATH AWAY



© 2006 Twentieth Century Fox Film Corporation and Dune Entertainment LLC. All Rights Reserved.

Watch the latest films in high definition on the big screen at home. Epson projects the magic of the movies.

Epson is the world's number one in projectors* and our top of the range Epson EH-TW4400 and EH-TW5500 models are packed with technology. You are also guaranteed high-quality output for years to come as both projectors come with a standard three year warranty.

For the ultimate home movie experience, Epson offers a wide range of high specification features. For instance, our 3LCD imaging technology gives seamless transition, with an amazing contrast ratio of up to 200 000:1.

- Future proof viewing with HD ready 1080p resolution
- Daytime viewing with High Colour Light Output of 1 600 lumens
- Epson cinema filter for astounding colour accuracy
- Flexible installation with horizontal / vertical lens shift



X-Men The Last Stand
Own it on DVD & Blu-ray

Enjoy X-Men The Last Stand on Blu-ray with Epson HD Ready 1080p projectors



ProSelecta

View :: Compare :: Select - www.ProSelecta.com

UNRIVALLED IMAGE QUALITY



3LCD technology

Epson advanced 3LCD imaging technology gives you smoother, sharper, brighter images with no flicker and no blurring – even in the brightest room. Coupled with our built-in E-TORL lamp technology you get more cost-efficient running.

Epson C²Fine panel

For brighter, more colourful HD entertainment Epson C²Fine technology delivers a higher contrast, true 1080p resolution, stunning image quality, true blacks and enhanced noise immunity.

High contrast ratio

To bring you the best possible home cinema experience, these projectors have a contrast ratio of up to 200 000:1. For stunning projection at Full HD resolution, there's simply no better way to watch a movie.

High Colour Light Output

To keep pace with the rich colour, high-definition content of DVDs and other media, Epson measures the vivid colour quality output of our projectors. This means you benefit from the highest possible picture quality.



Super-resolution technology

This leading edge technology can actually increase resolution and detail in certain DVDs and videos. So you can be sure that with the Epson super-resolution system in your projector, you can enjoy high-quality viewing time after time.

Frame interpolation

To ensure crystal clear, smooth viewing of movies and sports on the big screen, without motion blur, Epson uses frame interpolation. This ensures sharper and clearer images even when watching fast moving scenes.

7 colour modes

For perfect viewing every time, Epson uses 7 colour modes. This means the picture automatically adjusted to compensate for changing light conditions. So if you're watching on a cloudy day with bright intervals, you won't notice this and won't be distracted from the film.

ISF calibration

See the film, sports and television as the director intended. With a dedicated ISF calibration menu built-in, (Image Science Foundation certified standard), the Epson EH-TW5500 lets you correctly set brightness, contrast, colour, and sharpness. Now you can have stunning true to life colour images whatever you're viewing.



INTELLIGENT VIEWING

Extensive connectivity

Just plug and play your Blu-ray, DVD player, set-top box and more. Our wide range of future-proof connections include 2 x HDMI version 1.3.

Flexible positioning

For a great picture in any room, the lens position can be changed horizontally and vertically without picture distortion. Furthermore the Fujinon lens gives the best throw ratio allowing you to position the projector wherever you want.

Simple integration

Sleek, modern styling makes the Epson projector ideal for any decor. When ceiling mounting, the built-in cable cover neatly hides the cable.

Extremely low noise level

With an extremely low fan noise, at only 22 dB, you can simply relax and enjoy even the quietest of moments in the film without interruption.

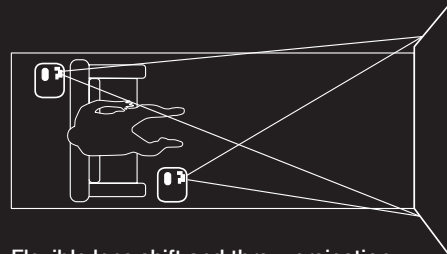
Comprehensive 3 year warranty

In line with our commitment to giving you consistently high-quality products, Epson home cinema projectors include a comprehensive 3 year warranty on both projector and lamp.



Projection distances for EH-TW4400 and EH-TW5500

Screen diagonal	Screen dimension		
16/9 aspect	W x H	Wide	Tele
60"	1.3 m x 0.7 m	1.8 m	3.8 m
80"	1.8 m x 1.0 m	2.4 m	5.1 m
100"	2.2 m x 1.2 m	6.0 m	6.4 m
120"	2.7 m x 1.5 m	3.6 m	7.6 m
150"	3.3 m x 1.9 m	4.5 m	9.6 m
200"	4.4 m x 2.5 m	6.0 m	12.8 m



Flexible lens shift and throw projection

EPSON EH-TW4400

Be the envy of all your friends with this high-quality, Full HD projector. Make watching big screen movies a reality with its dynamic features.

- Amazing pictures with high contrast ratio of 130 000:1
- Improve DVD and SD quality with super-resolution feature
- Ultra quiet fan at just 22 dB
- Stylish white design perfect for any living room
- Easy and flexible to install with convenient horizontal and vertical lens shift



EPSON EH-TW5500

Get the best from your existing equipment with this sleek, stylish, HD Ready 1080p projector. Play Blu-ray discs, games, watch TV and more.

- Real-life cinema experience with anamorphic lens mode
- Improve image quality thanks to the new HQV video processor
- Make advanced picture adjustments with the ISF calibration menu
- Amazing pictures with the highest contrast ratio on the market at 200 000:1
- Wider colour reproduction in HDMI with xv.Colour



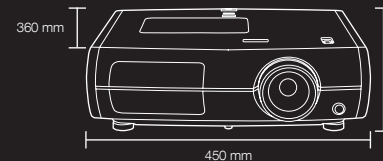
EPSON EH-TW4400

PROJECTION TECHNOLOGY	3LCD Technology 1080p (1920x1080) HD Ready 1080p (Full HD) 130 000:1 1 600 lm 1 600 lm 30" to 300" 80" screen at 2.4 – 5.1 m 0.87 m to 9.03 m – zoom wide 1.88 m to 19.15 m – zoom tele	3LCD Technology, C ² Fine panels 1080p (1920x1080) HD Ready 1080p (Full HD) 130 000:1 1 600 lm 1 600 lm 30" to 300" 80" screen at 2.4 – 5.1 m 0.87 m to 9.03 m – zoom wide 1.88 m to 19.15 m – zoom tele
Resolution	1080p (1920x1080)	1080p (1920x1080)
High definition	HD Ready 1080p (Full HD)	HD Ready 1080p (Full HD)
Contrast ratio*	130 000:1	130 000:1
White Light Output (brightness)*	1 600 lm	1 600 lm
Colour Light Output	1 600 lm	1 600 lm
Image size	30" to 300"	30" to 300"
Throw ratio	80" screen at 2.4 – 5.1 m	80" screen at 2.4 – 5.1 m
Throw distance	0.87 m to 9.03 m – zoom wide 1.88 m to 19.15 m – zoom tele	0.87 m to 9.03 m – zoom wide 1.88 m to 19.15 m – zoom tele
Zoom ratio	1 – 2.1 (optical)	1 – 2.1 (optical)
Lens F-number	2.0 – 3.17	2.0 – 3.17
Focal length	22.5 mm – 47.2 mm	22.5 mm – 47.2 mm
Lens shift	Vertical ± 96% / Horizontal ± 47%	Vertical ± 96% / Horizontal ± 47%
Video processing	Full 10 bit	Full 10 bit with HQV (and 12 bit panel driver)
Colour space	115% of NTSC (UCS chromaticity chart)	115% of NTSC (UCS chromaticity chart)
Noise level (eco mode)	22 dB	22 dB
Lamp	200W UHE (E-TORL) 4 000 hours	200W UHE (E-TORL) 4 000 hours
ADVANCED FEATURES	Epson's cinema filter, frame interpolation, advanced sharpness adjustments, Epson super white, six axis colour adjustment, customized gamma adjustment, 2:2 pull down (1080p / 24fps capability), output scaling, test pattern, direct power on	Deepblack technology, Epson's cinema filter, frame interpolation, 4:4 pull down, pictures noises reductions, advanced sharpness adjustment, six axis colour adjustment, customized gamma adjustment, output scaling, ISF calibration, colour isolation mode, test pattern, direct power on, anamorphic lens compatible
IMAGE ADJUSTMENTS		
Colour modes	Dynamic, living room, natural, theatre, theatre black 1, theatre black 2, x.v.Colour	Vivid, cinema day, cinema night, natural, HD, silver screen, x.v.Colour
VIDEO COMPATIBILITY	NTSC / NTSC 4.43 / PAL / M-PAL / N-PAL / PAL60 / SECAM 480i / 480p / 526i / 526p / 720p / 1080i / 1080p / 24 fps / 1080p in HDMI	NTSC / NTSC 4.43 / PAL / M-PAL / N-PAL / PAL60 / SECAM 480i / 480p / 526i / 526p / 720p / 1080i / 1080p / 24 fps / 1080p in HDMI
INPUTS		
Video	1 x composite, 1 x S-video, 1 x component / YUV (3 x RCA)	1 x composite, 1 x S-video, 1 x component / YUV (3 x RCA)
Multimedia	2 x HDMI version 1.3a (Deepcolour, x.v.Colour)	2 x HDMI version 1.3a (Deepcolour, x.v.Colour)
Computer	1 x RGB	1 x RGB
CONTROL	1 x RS 232 C, 1 x trigger out for motorized screen	1 x RS 232 C, 1 x trigger out for motorized screen
WEIGHT	7.5 kg	7.5 kg
WARRANTY	3 years on main unit and lamp	3 years on main unit and lamp

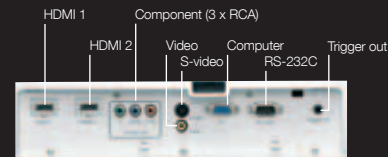
* ISO 21118 based measurement

EPSON EH-TW5500

DIMENSIONS



INPUTS



EPSON
WORLD LEADER
IN PROJECTORS



Not all products are available in all countries. Please check with your local Epson representative for details. For further information please contact your local Epson office or visit www.epson-europe.com

Austria 0810/20 01 13 (0,07 €/Min.) Belgium 070/350120 (0.1735 €/min.) Czech 800/142 052 Denmark 44 50 85 85 Finland 0201 552 091 France 09 74 75 04 04 (0,12€/min) Germany 01805/23 41 10 (0,14 €/Min.) Greece 210-8099499 Hungary 06800 147 83 Ireland 01 436 7742 Italy 02-660321 10 (0,12 €/min.) Luxembourg 900/43010 (0,24 €/min.) Middle East +9714 8818934 Netherlands 0900-5050808 (0.05 €/oproep + 0.15 €/min.) Norway 22 06 42 80 Poland 0-0-800 4911299 (0,16 zł/min.) Portugal 707 222 111 Russia (095) 777-03-55 Slovakia 0850 111 429 South Africa (+2711) 465-9621 Spain 93 582 15 00 Sweden 0771-400133 (Mobilsamtal – 0,99 kr/min, Lokala samtal – 0,30 kr/min, Utlandssamtal – 0,89 kr/min) Switzerland 0848 448820 (4-8 cent./min.) Turkey (0212) 3360303 United Kingdom 0871 222 6702

Trademarks and registered trademarks are the property of Seiko Epson Corporation or their respective owners. Product information is subject to change without prior notice.

EPSON®