



Shinning bright at 2000 ANSI lumens, the XD205U is a lightweight, easy to use projector for the cost conscious presenter.

XGA Performance at an Affordable Cost

The XD205U is an XGA DLP™ projector that provides a bright 2000 ANSI lumens picture at an affordable price. It also supports a high 2000:1 contrast ratio, video and data connectivity, and only weighs 5.3 lbs for convenient portability. It is also backed by Mitsubishi's exclusive ERA and Warranty programs making it high featured projector at an affordable cost.

- DLP™ technology
- Native XGA (1024x768) resolution
- 2000 ANSI lumens and a contrast ratio of 2000:1
- Lightweight at only 5.3 lbs
- 3-years or 10,000-hours on the TI-DLP DMD Chip, 3-years parts and labor, 3-years Express Replacement Assistance (ERA), 90-days or 300-hours lamp warranty

XD205U

XGA DLP™ PROJECTOR

TOP VIEW



BACK VIEW



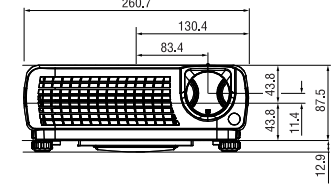
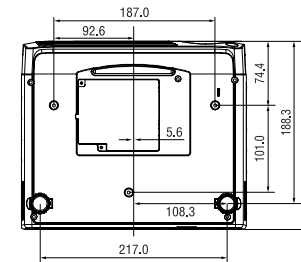
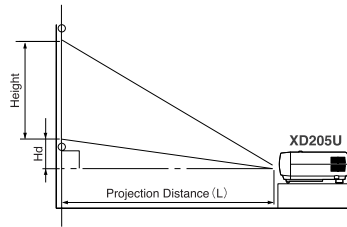
SIDE VIEW



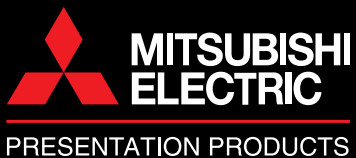
FRONT VIEW

DISPLAY TECHNOLOGY	0.55", 1-Chip DMD, 12 deg. DDR, DDP2000
RESOLUTION	1024 x 768 (Total 786,432 pixels), 550 Video Lines
BRIGHTNESS	2000lm (Minimum 1600lm)
CONTRAST RATIO	2000 : 1 (on/off)
ZOOM/FOCUS	Manual Focus & Zoom Lens
PROJECTION LENS	F= 2.4 (Wide) 100°@3.2 m (Wide)
THROW RATIO	1.56 - 1.87
OFF SET AXIS	7.9 : -1 up (No variable lens shift)
PICTURE SIZE	40-300 diagonal inches
SOURCE LAMP	205W (Shut Off Time 2000 Hrs) with Low Mode (164W: Shut Off Time 3000 Hrs)
PC COMPATIBILITY	Resolution: 640 x 480 - 1024 x 768 + Compressed 1280 x 1024 Sync on Green available
VIDEO COMPATIBILITY	NTSC/NTSC 4.43/PAL (including PAL-M, N) /SECAM/PAL-60, Component Video; 480i/p (525i/p), 576i/p (625i/p), 720p (750p), 1080i (1125i 60Hz), 1080i (1125i 50Hz)
INPUT TERMINALS	RGB: Mini D-sub 15pin x 1 Audio: Stereo Mini Jack (ø 3.5mm) x 1 Video: RCA x 1 + S-VIDEO x 1
OUTPUT TERMINAL	RGB: Mini D-sub 15pin x 1 Audio: Stereo minijack (ø 3.5mm) x 1 (variable lineout)
COMMUNICATION TERMINAL	USB terminal for Page Up/Down (with optional cable)
SCANNING RATE	[H] 15 - 80 kHz, [V] 50 - 85 Hz, [Dot Clock] max 110 MHz
AUDIO SPEAKER	2 W Mono
HEIGHT ADJUSTER	Rearward lifting leg x 2
HAND REMOTE UNIT	1) Projector fully control, 2) Power Point™ Page Up/Down via USB (with optional cable)
POWER CONSUMPTION	280W/2.9A
DIMENSION	10.28 x 8.58 x 3.42 inches (L x W x H)
WEIGHT	5.29 lbs.
POWER REQUIREMENTS	AC 100-240V, 50/60 Hz
FAN NOISE	36 dBA (Low mode: 30 dBA)
SUPPLIED ACCESSORIES	<ul style="list-style-type: none"> • Soft carrying bag • Remote control • Power cable • VGA (D-sub) cable • Composite cable • Owner's manual (CD-ROM) • Safety manual • Quick start manual
OPTIONAL ACCESSORIES	Replacement Lamp (VLT-XD205LP)
WARRANTY	3-years or 10,000-hours on the TI-DLP DMD Chip, 3-years parts and labor, 3-years Express Replacement Assistance (ERA), 90-days or 300-hours lamp warranty

SCREEN				DISTANCE FROM SCREEN (L)				Hd			
Diagonal Size		Width		Height		Max.Zoom		Min.Zoom		Hd	
inch	cm	inch	cm	inch	cm	inch	m	inch	m	inch	m
40	102	32	81	24	61	50	1.3	60	1.5	3.5	8.8
60	152	48	122	36	91	76	1.9	91	2.3	5.2	13.3
80	203	64	163	48	122	101	2.6	121	3.1	7.0	17.7
100	254	80	203	60	152	126	3.2	151	3.8	8.7	22.1
150	381	120	305	90	229	189	4.8	227	5.8	13.1	33.2
200	508	160	406	120	305	252	6.4	302	7.7	17.4	44.2
250	635	200	508	150	381	315	8.0	378	9.6	21.8	55.3
300	762	240	610	180	457	378	9.6	-	-	26.1	66.3



Unit measured in millimeters (mm)



MITSUBISHI DIGITAL ELECTRONICS AMERICA, INC.
 Presentation Products Division
 Toll Free: 888.307.0349
 Email: ppinfo@mdea.com
www.mitsubishi-presentations.com

Canada
 Mitsubishi Electric Sales Canada Inc.
 Information Technologies Group
 Phone: 905.475.7728
www.mitsubishielectric.ca



©2005 Mitsubishi Digital Electronics America, Inc. Standard features, options and specifications subject to change without notice. The DLP™ logo and DLP™ medallion are trademarks of Texas Instruments. Microsoft, Windows, and the Windows logo are registered trademarks of Microsoft Corporation. Mac and the Mac logo are trademarks of Apple Computer, Inc, registered in the U.S. and other countries. All other trademarks are the property of their respective holders.
 *The projector lamp contains mercury. Please dispose of properly.

PP20069-11/05-15M-LITXD205U