

Panasonic

ideas for life

PT-LB50NTU
Micro Portable Wireless XGA LCD Projector

PT-LB50U
Micro Portable XGA LCD Projector

PT-LB50SU
Micro Portable SVGA LCD Projector



The World's Fastest Wireless Transmission Projectors

Easy wireless projection (PT-LB50NTU)

- World's fastest data transfer*¹
- Wireless PC motion/sound streaming*²
- Abundant wireless functions, including secondary display transmission and 16-window index style
- Simple, user-friendly settings



There are no cables to connect, so projector setup is quick and easy, and you have full layout flexibility. Wireless Manager ME 3.0 software (provided) increases transmission speed by five times compared to our previous model*⁶. You get fast, smooth, stress-free transmission even with large video files*². You can copy Wireless Manager to a memory card and take it with you on a trip. This lets you enjoy wireless transmission even at presentation sites where the computer doesn't have the software*⁷.

Daylight View 2 technology

- Looks max. 50% brighter*³
- Vivid colors in a bright room
- Auto operation with ambient light sensor (ALS)



High power and portability

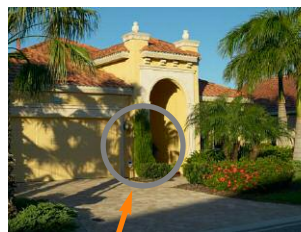
- Bright 2,000 lumens
- Ultra-lightweight: 4.0 lbs/4.2 lbs (1.8 kg/1.9 kg)*⁴
- Slim and compact design: 2-1/4" (57-mm) thickness*⁵

Quick operation

- 2-second speed start
- Auto search
- Real-time keystone correction
- Operation assistance
- Direct power off

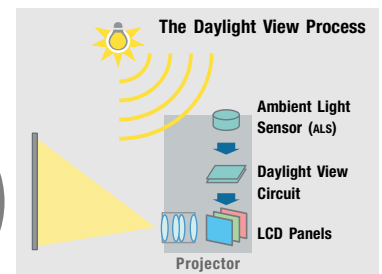
Wireless Prompter (Secondary Display) Function

This allows transmission of content other than what's displayed on your PC. For example, you can display text documents on your PC screen while projecting slide from your Microsoft® PowerPoint® presentation*⁸. You get a host of other convenient wireless transmission functions too, such as area-specified transmission and a multi-live mode for simultaneous display of up to 16 PCs.



Daylight View 2

A built-in sensor measures the ambient light, and the halftone colors and brightness level are adjusted accordingly in real time. Viewing brightness is increased up to 150%*³.



*¹ As of February 7, 2006, according to our own evaluation of wireless transmission from PC to projector. Wireless projection function is featured on the PT-LB50NTU only.
*² Content and DVDs set with DRM (Digital Rights Management) cannot be transmitted.
*³ Comparison with Daylight View 2 turned On and Off, using an 80-inch screen and ordinary meeting room lighting of 400 lux. (Projector: PT-LB50NTU, screen gain: 2.6)
*⁴ 4.0 lbs/1.8 kg for the PT-LB50U and PT-LB50SU; 4.2 lbs/1.9 kg for the PT-LB50NTU.
*⁵ Legs and protrusions not included.
*⁶ PT-LB20NTU
*⁷ Transmission will be slower than transmission with a computer that has the software installed. Also, certain functions may not be available.
*⁸ With Wireless Manager ME 3.0, you can use the projector screen as a secondary monitor for the PC. In this setup, Microsoft® PowerPoint® must be set to "Show Presenter View."

Rear View



Specifications

<p>Power supply 100–240 V AC, 50/60 Hz</p> <p>Power consumption 240 W (Approx. 2 W in standby mode with fan stopped)</p> <p>LCD panel 4:3 aspect ratio, micro lens array</p> <p>Panel size 0.6" (15.24 mm) diagonal</p> <p>Display method Transparent LCD panel (x 3, R/G/B)</p> <p>Drive method Active matrix</p> <p>Pixels PT-LB50NTU/LB50U 786,432 (1,024 x 768) x 3, total of 2,359,296 pixels PT-LB50SU 480,000 (800 x 600) x 3, total of 1,440,000 pixels</p> <p>Pixel configuration Stripe</p> <p>Lens Manual zoom (1:1–1:1.2), manual focus, F 1.6–1.9, f 18.8–22.6 mm 165 W UHM™ lamp</p> <p>Lamp 165 W UHM™ lamp</p> <p>Colors Full color (16,777,216 colors)</p> <p>Brightness 2,000 lumens</p> <p>Uniformity 85%</p> <p>Contrast 400:1*1 (full on/full off)</p> <p>Scanning frequency RGB Horizontal: 15–91 kHz, Vertical: 50–85 Hz YPbPr 480i (525i): fh 15.75 kHz; fv 60 Hz 576i (625i): fh 15.63 kHz; fv 50 Hz 480p (525p): fh 31.5 kHz; fv 60 Hz 576p (625p): fh 31.25 kHz; fv 50 Hz 720p (750p): fh 45 kHz; fv 60 Hz 1080i (1125i): fh 33.75 kHz; fv 60 Hz 1080i (1125i): fh 28.125 kHz; fv 50 Hz</p> <p>S-Video/Video NTSC, NTSC4.43, PAL-M, PAL60: fh 15.75 kHz; fv 60 Hz PAL, SECAM, PAL-N: fh 15.63 kHz; fv 50 Hz</p> <p>Projection size 33–300 inches/838–7,620 mm diagonally</p> <p>Throw distance PT-LB50NTU/LB50U 3'7"–36'5" (1.1 m–11.1 m) PT-LB50SU 3'7"–35'9" (1.1 m–10.9 m)</p> <p>Optical axis shift 6:1 (fixed)</p> <p>Keystone correction range Vertical: ±30°</p>	<p>On-screen menu 17 languages: English, French, German, Spanish, Italian, Korean, Russian, Chinese, Japanese, Swedish, Norwegian, Danish, Portuguese, Polish, Hungarian, Czech, and Thai</p> <p>Installation Front/rear ceiling/desk (menu selection)</p> <p>Built-in speakers 1-9/16" x 25/32" (4 x 2 cm) x 1 (oval), 1.0 W (monaural) output power</p> <p>Terminals PC 1 IN RGB signal D-sub HD 15-pin x 1 R, G, B: 0.7 Vp-p, 75 ohms, Sync on green: 1.0 Vp-p, 75 ohms HD/SYNC, VD: TTL (positive/negative polarity compatible)</p> <p>YPbPr signal Y: 1.0 Vp-p (including sync signal), 75 ohms; Pb, Pr: 0.7 Vp-p, 75 ohms</p> <p>PC 2 IN/PC 1 OUT RGB signal R, G, B: 0.7 Vp-p, 75 ohms, Sync on green: 1.0 Vp-p, 75 ohms HD/SYNC, VD: TTL (positive/negative polarity compatible)</p> <p>YPbPr signal Y: 1.0 Vp-p (including sync signal), 75 ohms; Pb, Pr: 0.7 Vp-p, 75 ohms</p> <p>VIDEO IN S-VIDEO IN RCA pin x 1, 1.0 Vp-p, 75 ohms Mini DIN 4-pin x 1, Y: 1.0 Vp-p, C: 0.286 Vp-p, 75 ohms</p> <p>AUDIO IN RCA (L, R) x 1, 0.5 Vrms (for VIDEO/S-VIDEO)</p> <p>PC AUDIO IN AUDIO OUT M3 (L, R) x 1, 0.5 Vrms M3 (L, R) x 1, 0–2.0 Vrms (variable)</p> <p>SERIAL Mini DIN 8-pin x 1 (RS-232C)</p> <p>Power cord length 6'7" (2 m)</p> <p>Cabinet material Moulded material (ABS/PC)</p> <p>Dimensions (W x H x D) 11-11/16" x 2-1/4" x 8-1/4" (297 x 57 x 210 mm)</p> <p>Weight PT-LB50NTU 4.2 lbs. (1.9 kg) PT-LB50U/LB50SU 4.0 lbs. (1.8 kg)</p> <p>Operating environment Temperature 32°–104°F (0°–40°C) Humidity 20%–80% (no condensation)</p>	<p>Remote Control Unit Power supply 3 V DC (button battery x 1) Operation range** Approx. 23 feet (7 m) when operated from directly in front of the signal receptor</p> <p>Dimensions (W x H x D) 2-1/16" x 4-27/32" x 13/16" (52 x 123 x 21 mm) 2.6 ozs. (74 g) (including batteries)</p> <p>Weight Wireless LAN (PT-LB50NTU) Standard IEEE802.11b/g Modulation IEEE802.11b Direct sequence spread spectrum (DS-SS) system IEEE802.11g Orthogonal frequency division multiplex (OFDM) system</p> <p>Transmission system IEEE802.11b CCK (11/5.5 Mbps), DQPSK (2 Mbps), DBPSK (1 Mbps) IEEE802.11g 64-QAM (54/48 Mbps), 16-QAM (36/24 Mbps), QPSK (18/12 Mbps), BPSK (9/6 Mbps)</p> <p>Transmission speed IEEE 802.11b 11 Mbps, 5.5 Mbps, 2 Mbps, 1 Mbps IEEE 802.11g 54 Mbps, 48 Mbps, 36 Mbps, 24 Mbps, 18 Mbps, 12 Mbps, 9 Mbps, 6 Mbps</p> <p>Operation range** Approx. 98'5" (30 m) Frequency range 2,412 MHz–2,462 MHz Channels 1–11 ch</p> <p>Supplied Accessories</p> <ul style="list-style-type: none"> • Power cord • Wireless remote control • Batteries for remote control • VGA cable • Carrying bag • Wireless Manager ME 3.0 (CD-ROM)*3 <p>Optional Accessories ET-LAB50 Replacement lamp unit ET-PKB50 Ceiling mount bracket ET-RM300 Full-function wireless remote control ET-ADSER Serial adapter (DIN 8-pin/D-sub 9-pin)</p>
--	--	--

*1: In AI mode.

*2: Operation range differs depending on the environment.

*3: For the PT-LB50NTU only.

NOTES ON USE

- The projector uses a high-voltage mercury lamp that contains high internal pressure. This lamp may break, emitting a large sound, or fail to illuminate, due to impact or extended use. The length of time that it takes for the lamp to break or fail to illuminate varies greatly depending on individual lamp characteristics and usage conditions.
- The brightness of the lamp will gradually decrease with use.
- The lamp, LCD panel, polarizing plate, and polarizing beam splitter (PBS) are consumable parts. These parts may need to be replaced during the guarantee period if the projector is used for six or more hours per day.
- The replacement cycle of the LCD panel, polarizing plate, and polarizing beam splitter (PBS) will be shortened if the projector is subjected to continuous use for six or more hours. Likewise, the replacement cycle of the lamp will be shortened if the power is frequently turned on and off or the projector is subjected to continuous use for 10 or more hours.
- Interruptions may occur in the wireless connection due to signal interference or PC conditions.

To use wireless functions, a PC is required that meets the conditions given below:

- OS:** Microsoft® Windows® 2000 Professional, Windows® XP Professional, Windows® XP Home Edition
- CPU:** Pentium® III or higher, or other compatible processor (1 GHz or higher is recommended).
- Memory:** 256 MB or more
- Free hard disk space:** 60 MB or more
- CD-ROM drive:** CD-ROM drive or DVD drive
- Wireless LAN:** IEEE 802.11b/g compatible (built-in wireless LAN system or external IEEE 802.11b/g LAN card must be installed and running normally.) However, some IEEE 802.11g/b wireless LAN may not allow connection to the projector.
- Web browser:** Internet Explorer 6.0 or later, Netscape Communicator 7.0 or later
- Direct X:** DirectX® 8.1b or later must be installed.

Operation is not guaranteed for all computers that meet the above conditions

Panasonic



ProSelecta

View :: Compare :: Select - www.ProSelecta.com