

HD72 | Home Theater Projector



HD72 – Great Quality...Great Performance...Great Value

The Optoma HD72 projector is a true 720p, high-performance projector for home theater enthusiasts. The HD72 features Texas Instruments' BrilliantColor™ color processing technology to deliver higher brightness and provide truer, more vibrant colors to the projected picture. And, with 10-bit color per channel color processing, a 7-segment color wheel and its 5000:1 contrast ratio, the Optoma HD72 DLP™ home theater projector delivers great color saturation and subtle color details for the best image quality.

FEATURES

- **Highest quality**, entry level **720p Home Cinema** projector in the market
- **1300 lumens with 5000:1** contrast ratio in ImageAI™ mode
- **HD compatibility 1080p and UXGA**
- **7 segment** color wheel
- Long lamp life of **3000 hours**
- **Texas Instruments' DDP3020** Processing
- **BrilliantColor™** technology
- **TrueVivid™** Color enhancement
- **TrueVision™** Motion-Adaptive enhancement
- **Wide angle zoom lens** with throw ratio of 1.58-1.9
- Light shield design and **ultra-quiet operation**
- **Dual digital** HD connectivity (DVI-I and HDMI)
- **YPbPr, RGB, SCART** support
- Supports 18 languages



HD72 | Home Theater Projector



SPECIFICATIONS	
Display Technology	Single 0.65-inch DarkChip2™ DLP™ technology by Texas Instruments
Brightness	1300 lumens (typical)
Weight	7 pounds (3.2 kg)
Resolution	1280 x 768 native UXGA (1600 x 1200), 1080p (1920 x 1080) Resize
Dimensions (WxHxD)	13.56 x 3.72 x 9.67 (344 x 94 x 246 mm)
Contrast Ratio	5000:1 in ImageAI™ mode and 3500:1 (full on/full off)
Noise Level	27 dB standard (typical)
Lamp Type	220W UHP
Lamp Life	2,000 hours Brightmode™ / 3,000 hours STD
Image Size	28" - 304"
Projection Distance	3.9' - 39'
Computer Compatibility	UXGA, SXGA+, WXGA, XGA, SVGA, VGA compression, VESA standards, PC & Macintosh compatible
Video Compatibility	NTSC (M, 3.58/4.43 MHz), PAL (B, D, G, H, I, M, N), SECAM (B, D, G, K, K1, L), HDTV (720p, 1080i, 1080p)
Aspect Ratio	16:10 widescreen native with support for 4:3 and 16:9
Projection Lens	F/2.5~2.8, f = 22.25~26.69mm 1.2x Manual focus/Digital zoom
Keystone Correction	Horizontal and Vertical
Throw Ratio	1.58 to 1.90 (distance/width)
Vertical Refresh Rate	43 to 120 Hz
Power Supply	100-240 volts, 50-60 Hz
Power Consumption	285 W+~10% Full Power, < 13W Standby Power
Operating Temperature	Operating: 5-35C, 80% humidity (Max.) Storage: -20 - 60C, 80% humidity (Max.)
Displayable Colors	10-bit per channel color processing
Projection Method	Front / rear / ceiling mount / table-top
Uniformity	90%
I/O Connectors	HDMI, DVI-I w/HDCP, Component video, Composite video (RCA), S-Video, RS-232 Two IR receivers, Dual 12+12V trigger relays
Standard Accessories	Composite video cable, S-video cable, Remote control, battery for remote, lenscap, User's Manual, quick start guide, warranty card, power cord
Warranty	Limited 2-year warranty with a Zero Dead Pixel policy, 90-day lamp warranty
Optional Accessories	Ceiling Mount Kit, GrayWolf™ series screens, carrying case and extended warranty
UPC code	796435 11 589 0

PROJECTION DISTANCE/IMAGE SIZE		
Projection Distance (feet)	Maximum Diagonal (inches)	Minimum Diagonal (inches)
6	52.28	43.48
8	69.71	57.97
10	87.14	72.46
12	104.57	89.96
14	122.00	101.45
16	139.42	115.94
18	156.85	130.44

Image and color enhancement technologies



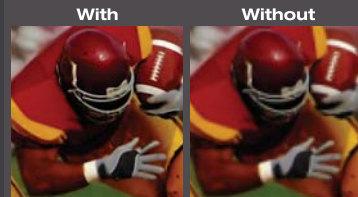
BrilliantColor™ Technology

With the new advanced, 10-level BrilliantColor™ color-processing system, the projector delivers higher brightness and more vibrant scenes while providing truer, more stunning colors to the picture.



TrueVivid™ Image Processing

With TrueVivid™ image processing, the picture quality is enhanced for veritable video fidelity, including better depth and can add a deeper 3D look to any image.



TrueVision™ Technology

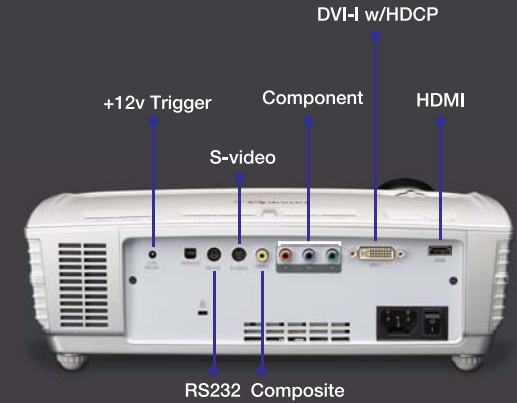
TrueVision™ technology improves cross-coloring and eliminates jagged edges, allowing the projector to deliver cinema-like images with exceptional picture quality.

Now with ImageAI™

Image Artificial Intelligence
auto adjusting light intensity output

<p>HIGH LUMENS ALONE</p> <p>Increases clarity in lighter areas... </p> <p></p> <p>But makes dark areas wash out.</p>	<p>ONLY ImageAI™ GIVES YOU BOTH!</p> <p>HIGH 1300 LUMENS for amazing clarity in light image areas...</p> <p>PLUS</p> <p>HIGH 5000:1 CONTRAST for details in dark areas and shadows</p>
<p>HIGH CONTRAST ALONE</p> <p>Increases detail in darker areas... </p> <p></p> <p>But makes lighter areas appear dark.</p>	<p>ImageAI™ Image Artificial Intelligence®, Optoma's auto adjusting light intensity output, delivers an amazing 1300 lumens AND 5000:1 contrast ratio!</p>

I/O Ports

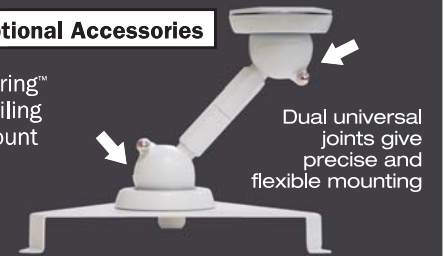


Dimensions



Optional Accessories

Bering™ Ceiling Mount



Dual universal joints give precise and flexible mounting

AVAILABLE AT