

LP[®]790



BUILT-IN NETWORK CAPABILITY Supports standard control interfaces

EFFICIENT, UNOBTRUSIVE DESIGN Slightly more than 13 pounds

MOUNTS EASILY For dedicated installations

RICH AUDIO In a compact package

QUIET OPERATION Less than 34dB for distraction-free operation

EXTENSIVE CONNECTIVITY Accepts virtually any source—VCR, DVD, PC/Mac, and DVI



InFocus® LP790



Compact Power. Simple Install Solution.

READY TO PROJECT

The InFocus® LP790 is the ideal projector for multi-user, large audience applications with input source flexibility and quality high-contrast projection—all in a compact, simple installation solution. Set the LP790 in place and project crisp images, rich audio and outstanding InFocus Quality Video™ and you'll see why it's the outstanding projector in its class.

THE COMPLETE TECHNOLOGY SOLUTION

The LP790 is the IT solution when you need a standalone or network-ready projector that's easy to install, set up, and connect for powerful projection on demand. Classrooms, training centers, hotel meeting rooms, conference venues and auditoriums need this projector as standard equipment. Sturdy and compact—nearly half the size of competitive projectors—the LP790 is an essential part of your corporate projector lineup, event rental bay or institutional resource pool.

PACKED WITH FEATURES

At last, simplicity doesn't come with a trade-off. Sacrifice nothing with the InFocus LP790. Input source flexibility, 3000 ANSI lumen projection, network-readiness, and native XGA resolution displays high-quality data and video. It's one of the first projectors to support HDCP and digital video through DVI for the best image quality. And, with a built-in RJ45 network connection, the LP790 supports standard control interfaces such as TCP/IP. RS-232 provides seamless compatibility with control systems such as AMX and Crestron®, and the LP790 has USB and PS/2 for mouse control. This projector is simply the easiest way to bring feature-packed, high-quality projection to users with a variety of applications.



INCREDIBLE VIDEO

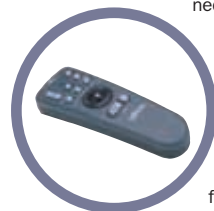
A highly sophisticated video processor for line doubling and smooth images gives the audience a cinema-quality experience when viewing video. From both the data and video sources, the rich color saturation, brightness (3000 ANSI lumens) and high contrast ratio (800:1) deliver an exceptionally stunning display for any large-room application. The Digital Visual Interface (DVI) provides loss-free connections for rich images in a large format, and at only 34dB the viewing experience is superb, never spoiled by fan noise.

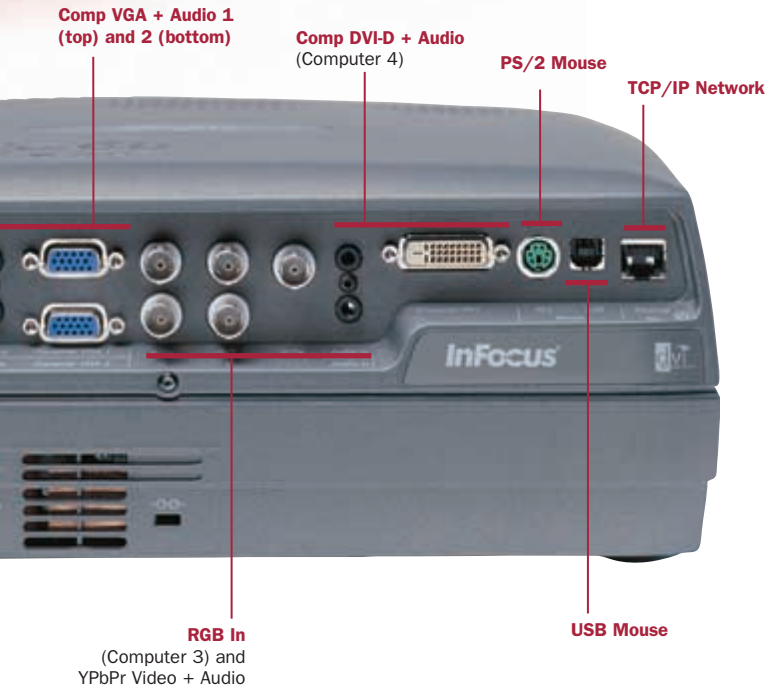
CONVENIENT SOLUTION

Built-in networking capability allows the LP790 to support the emergence of asset management via the corporate network to help IT departments reduce total cost of ownership (TCO). This network-ready projector, paired with future networking software from InFocus Corporation, will work through



standards such as Microsoft® Management Control enabling control, configuration and administration of the projector—or a fleet of projectors—from a remote console. And, the LP790 accepts the full range of typical input sources—DVD, VCR, computers—and is completely network-ready allowing the control and management of the asset with a built-in RJ45 connector. For the user's convenience, all functions can be controlled both from the remote and from the projector keypad, or from a wired remote in installation environments. Easy for IT to manage, easy for departments to use.

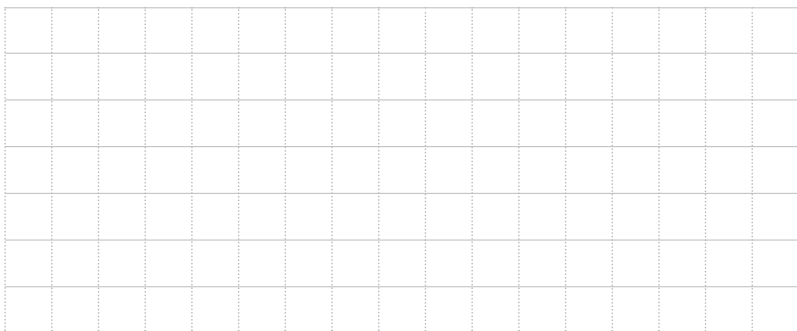
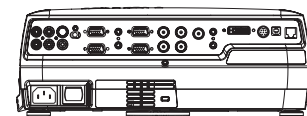
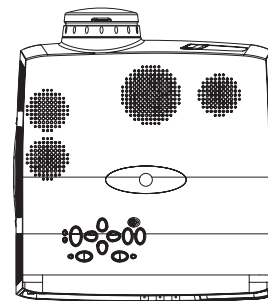
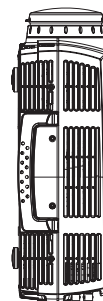
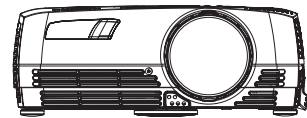
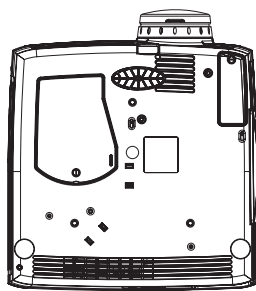


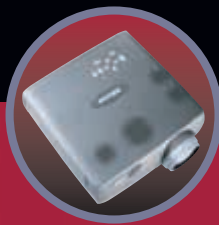


ENHANCED INVESTMENT POTENTIAL

Using standards such as Microsoft® Management Control, the LP790 supports standard asset management over a corporate network. As businesses add essential equipment to their existing asset structure, administrators will be able to more readily get statistics on the utilization of projectors, track costs and reduce TCO (total cost of ownership), further enhancing the investment potential of the LP790.

The LP790 supports standard RJ45 network connections and standard TCP/IP protocols.





INFOCUS QUALITY VIDEO

The advanced video processor converts existing standard definition video from DVD, videotape, laser disc, satellite or standard broadcast television to a near high-definition signal, dramatically improving the video image. In addition, the LP790 is HDCP (High-bandwidth Digital Content Protection) video compatible, which enables video to be transferred digitally from a DVD player to the projector over the DVI interface. This process removes artifact and noise for perfect images, and is the new standard of choice for digital video transfer.

Video Processing

- Motion-adaptive video deinterlacing
- Source adaptive processing
- Film mode detection with 3:2 and 2:2 pull down
- Source Transition Management provides seamless transitions between source types
- Auto-dynamic thresholds enable reliable 3:2 pull down and 2:2 pull down detections even with noisy sources
- Motion detection on per-pixel basis
- Four input fields used to determine contents of each output frame
- Cubic interpolation for pixel calculations
- Diagonal processing reduces artifacts and distortion
- Low-noise, high-accuracy 10-bit video ADCs

SERVICE YOU CAN COUNT ON

For outstanding service and support that's there when you need it, InFocus Corporation's service programs offer you peace of mind—it's customer care you can count on. Extended Warranties and Technology Upgrades are all part of our commitment to our products and our customers. For more information on service program details for your region, please visit www.infocus.com/service/service_offerings.

Ships Standard With:

- **Wired/wireless remote control with mouse control and laser pointer**
- **AC power cord (US or European)**
- **USB mouse cable**
- **VGA cable**
- **S-Video cable**
- **A/V cable**
- **User guide**
- **Safety card**
- **Dust cover**

ORDERING INFORMATION

Model Number

LP790 For worldwide use

Optional Accessories

- Samsonite® Deluxe Travel Case (CASE-801)
- ATA Shipping Case (CA-ATA-008)
- Digital/Analog Interface Card (SP-DVI-CARD)
- Ceiling Mount Kit (SP-CEIL-001)
- USB Ranger 400 System (HW-USBRNGR4, HW-USBRNGR4-I)
- PC Guardian® Projector Cable Lock (SP-LOCK)
- 20 m wired remote cable (301145)
- Mind Path® Remotes (GYRO-RF, HW-RF-POCKTPNT, IR50F/X)
- 40/50-inch Portable Projection Screens (HW-PORTSCR40, HW-PORTSCR50)
- 60-inch Deluxe Insta-Theatre Screen (HW-DLXSCRN)
- Replacement Lamp – 1500 hours (SP-LAMP-001)
- Lens-016
- Lens-017

TECHNICAL SPECIFICATIONS

Native Resolution	• XGA (1024 x 768)
Display Technology	• 1.3" polysilicon TFT x 3 with micro lens array
Input Sources	• Computer: HD15 x 2 (analog RGB), DVI-D, 5BNC (RGBHV, RGBS, RGSB), audio x 4 (3.5 mm stereo mini jack) Video: YPbPr, HDCP Digital Video and RGB component video (via 5BNC), S-Video, composite video, audio (RCA x 2)
Output Sources	• RGB (HD15), audio (RCA x 2)
Computer Compatibility	• SXGA, XGA, SVGA, VGA, Mac
Video Compatibility	• HDTV (1080i, 720p), NTSC, NTSC 4.43, PAL, SECAM
Brightness	• 3000 ANSI lumens
Brightness Uniformity	• 85%
Contrast Ratio	• 800:1 full on/full off
Number of Colors	• 16.7 million
H-Synch Range	• 15 - 100 kHz
V-Synch Range	• 43.5 - 130 Hz
Dot Clock	• 12 - 165 MHz
Digital Keystone Correction	• + 40/- 15°
Projection Lens	• f = 47 - 61 mm
Throw Ratio	• 1.75 - 2.24:1
Minimum Projection Distance	• 1.1 m
Aspect Ratio	• 4:3 native; 5:4, 16:9 supported
Image Size (diagonal)	• 30" - 300" (762 mm - 7620 mm)
Projection Methods	• Front/rear, ceiling/desktop
Audio	• 2 x 2.5 Watt stereo with 20 Watt subwoofer
Control	• USB mouse, PS/2 mouse, RS-232
Communication	• Onboard TCP/IP networking for projector control
Lamp	• 270 Watt SHP, 1500 hours
Dimensions	• 12.7" (W) x 5.1" (H) x 13.9" (L) 322 mm (W) x 130 mm (H) x 352 mm (L)
Weight	• 13.2 lbs. (6.0 kg)
Power Consumption	• 400 Watts
Power Supply	• 100V - 240V at 50 - 60 Hz
Operating Temperature	• 10° - 35° C (50° - 95° F)
Menu Languages	• English, German, French, Spanish, Italian, Norwegian, Portuguese, Japanese, Chinese
Audible Noise	• Less than 34dB
Approvals	• UL, cUL, CE, FCC Class A, TUV, C-tick, NOM, IRAM
Lamp Warranty	• 90 days
Warranty	• Two years

PROJECTION DISTANCES/IMAGE SIZES

Min Distance	Max Distance	Image Width	Image Diagonal
3.2'	4.0'	21.6"	27"
5.8'	7.5'	40"	50"
7.0'	9.0'	48"	60"
9.3'	11.9'	64"	80"
11.7'	14.9'	80"	100"
14.0'	17.9'	96"	120"
23.3'	29.9'	160"	200"
35.0'	44.8'	240"	300"

Throw Distance 1.1 - 10.7m/4 - 36 ft, Throw Ratio 1.75 - 2.24:1 (distance:width)

www.infocus.com

InFocus Corporate Headquarters:

27700B SW Parkway Avenue • Wilsonville, Oregon 97070-9215, USA
Phone: 503-685-8888 • 1-800-294-6400 • Fax: 503-685-8887

In Europe: Olympia 1 • NL-1213 NS Hilversum, The Netherlands
Phone: (31) 35 6474000 • Fax: (31) 35 6423999
Freephone: 008000 4636287 (008000 INFOCUS)

In Asia: 238A Thomson Road • #18-01/04 Novena Square
Singapore 307684 • Telephone: (65) 334-9005 • Fax: (65) 333-4525

InFocus® and LP® are registered trademarks of InFocus Corporation. All other trademarks are used with permission or are for identification purposes only and are the property of their respective companies. ©2001 InFocus Corporation. All rights reserved. 805-0491-00.LP790_DS_E.qxd.10/01