





MOBILE LED PROJECTOR USER'S MANUAL



EYE SAFETY WARNINGS

-  Avoid staring/facing directly into the projector beam at all times. Keep your back to the beam as much as possible.
-  A stick or laser pointer is recommended to avoid the need for the user to enter the beam.
-  When projector is used in a classroom, adequately supervise students when they are asked to point out something on the screen.
-  In order to minimize power, use room blinds to reduce ambient light levels.

A.2.9.31 GLOSS OF HOUSING OF PERIPHERAL DEVICES (15TH / 22 MEETING AG1 EK1):

The requirements for the gloss of housing apply to peripheral devices used at the visual display workplace according to BildscharbV. Peripheral devices intended for use outside the visual display workplace can receive a GS-Mark if the scope is indicated in the User's Manual as well as the certificate.

That means the following wording is possible in situations where the use within the field of view is not intended and where sufficient hints are given in the User's Manual for the avoidance of such situations to ensure that display work is not affected.

Wording in the certificate: "This device is not intended for use in the direct field of view at visual display workplaces. To avoid incommuting reflexions at visual display workplaces this device must not be placed in the direct field of view."

REGULATION & SAFETY NOTICES

This appendix lists the general notices of your Projector.

FCC notice

This device has been tested and found to comply with the limits for a Class B digital device pursuant to Part 15 of the FCC rules. These limits are designed to provide reasonable protection against harmful interference in a residential installation. This device generates, uses, and can radiate radio frequency energy and, if not installed and used in accordance with the instructions, may cause harmful interference to radio communications.

However, there is no guarantee that interference will not occur in a particular installation. If this device does cause harmful interference to radio or television reception, which can be determined by turning the device off and on, the user is encouraged to try to correct the interference by one or more of the following measures:

- Reorient or relocate the receiving antenna.
- Increase the separation between the device and receiver.
- Connect the device into an outlet on a circuit different from that to which the receiver is connected.
- Consult the dealer or an experienced radio/television technician for help.

Notice: Shielded cables

All connections to other computing devices must be made using shielded cables to maintain compliance with FCC regulations.

Caution

Changes or modifications not expressly approved by the manufacturer could void the user's authority, which is granted by the Federal Communications Commission, to operate this device.

Operation conditions

This device complies with Part 15 of the FCC Rules. Operation is subject to the following two conditions:

1. this device may not cause harmful interference, and
2. this device must accept any interference received, including interference that may cause undesired operation.

Notice: Canadian users

This Class B digital apparatus complies with Canadian ICES-003.

Remarque à l'intention des utilisateurs canadiens

Cet appareil numérique de la classe B est conforme à la norme NMB-003 du Canada.

Declaration of Conformity for EU countries

- EMC Directive 2004/108/EC (including amendments)
- Low Voltage Directive 2006/95/EC
- R & TTE Directive 1999/5/EC (if product has RF function)

IMPORTANT SAFETY INSTRUCTION

1. Do not block any ventilation openings. To ensure reliable operation of the projector and to protect from over heating, it is recommended to install the projector in a location that does not block ventilation. As an example, do not place the projector on a crowded coffee table, sofa, bed, etc. Do not put the projector in an enclosure such as a book case or a cabinet that restricts air flow.
2. Do not use the projector near water or moisture. To reduce the risk of fire and/or electric shock, do not expose the projector to rain or moisture.
3. Do not install near heat sources such as radiators, heaters, stoves or any other apparatus such as amplifiers that emits heat.
4. Do not use the projector in direct sunlight.
5. Do not use near any appliance generating a strong magnetic field.
6. Do not use the projector in areas susceptible to excessive dust and dirt.
7. Turn off the product before cleaning.
8. Disconnect the power cord if the product is not being used for a long period of time.
9. Ensure that the ambient room temperature is within 5 - 35°C.
10. Relative Humidity is 5 - 35°C, 80% (Max), non-condensing.
11. Do not drop, throw or try to bend your product.
12. May explode if disposed of in fire.
13. Clean only with dry cloth.
14. Only use attachments/manipulators specified by the manufacturer.
15. Do not use the unit if it has been physically damaged or abused. Physical damage/abuse would be (but not limited to):
 - Unit has been dropped.
 - Charger or plug has been damaged.
 - Liquid has been spilled on to the projector.
 - Projector has been exposed to rain or moisture.
 - Something has fallen in the projector or something is loose inside.Do not attempt to service the unit yourself. Opening or removing covers may expose you to dangerous voltages or other hazards. Please contact your local reseller or service center before you send the unit for repair.
16. Do not let objects or liquids enter the projector. They may touch dangerous voltage points and short out parts that could result in fire or electric shock.
17. See projector enclosure for safety related markings.
18. The unit should only be repaired by appropriate service personnel.
19. Do not touch the projector for a long time while the projector is used.

DISPOSAL OF OLD ELECTRICAL & ELECTRONIC EQUIPMENT

(Applicable throughout the European Union and other European countries with separate collection programs)

This symbol found on your product or on its packaging, indicates that this product should not be treated as household waste when you wish to dispose of it. Instead, it should be handed over to an applicable collection point for the recycling of electrical and electronic equipment. By ensuring this product is disposed of correctly, you will help prevent potential negative consequences to the environment and human health, which could otherwise be caused by inappropriate disposal of this product. The recycling of materials will help to conserve natural resources.




This symbol is only valid in the European Union.

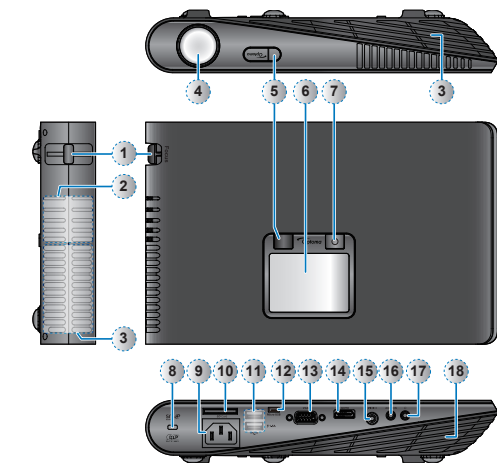
If you wish to discard this product, please contact your local authorities or dealer and ask for the correct method of disposal.

TRADEMARKS

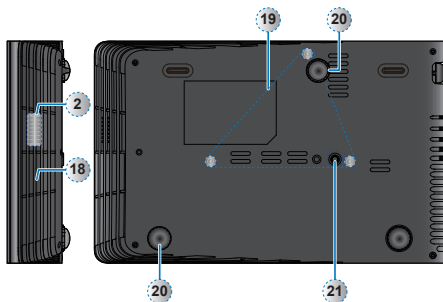


- WOW HD, SRS and the  symbol are trademarks of SRS Labs, Inc. WOW HD technology is incorporated under license from SRS Labs, Inc.
- WOW HD™ significantly improves the playback quality of audio, delivering a dynamic 3D entertainment experience with deep, rich bass and high frequency clarity for crisp detail.

PRODUCT OVERVIEW

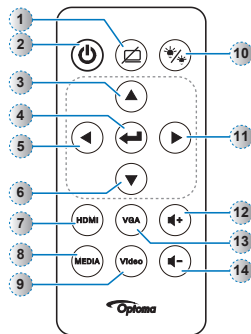


1. Focus Dial
2. Speaker
3. Ventilation (outlet)
4. Lens
5. IR Receiver
6. Touch Panel
7. Power Button (⏻)
8. Kensington Lock
9. AC Input
10. SD Card Slot
11. USB Type A Port (Memory Stick/WiFi/HDD)
12. Micro USB Port
13. VGA Connector
14. HDMI Connector
15. Video In
16. Audio / AV In
17. Headphones Connector
18. Ventilation (inlet)
19. Ceiling Mount Holes
20. Elevator Foot
21. Screw Hole for Tripod

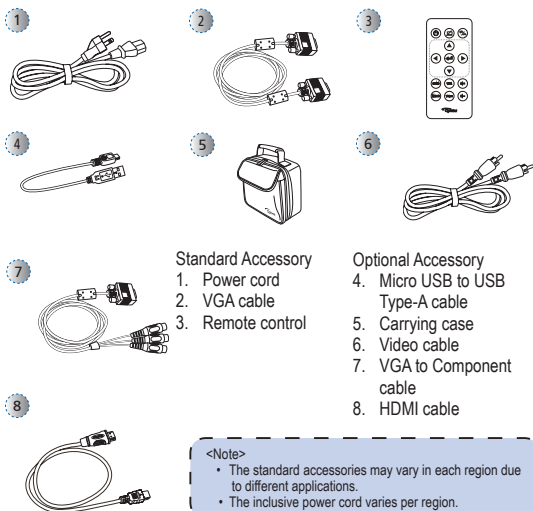


Remote Control

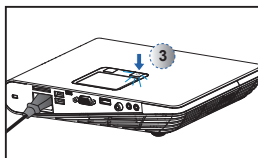
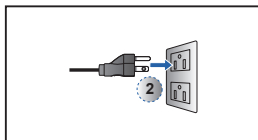
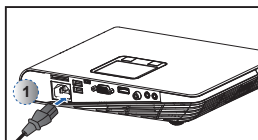
1. Hide Button
2. Power Button
3. Up Button
4. OK Button
5. Left Button
6. Down Button
7. HDMI Button
8. Media Button
9. Video Button
10. LED Mode Button
11. Right Button
12. Volume Up Button
13. VGA Button
14. Volume Down Button



PACKAGE OVERVIEW

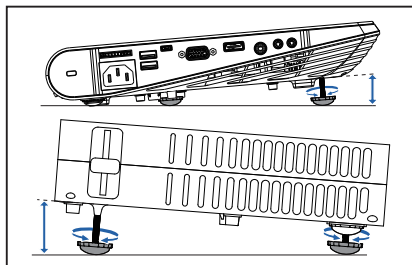


POWER ON / OFF



1. Connect the power cord to the AC IN input jack on the rear of the projector. (①)
2. Insert the plug at the other end of the power cord into a power outlet. (②)
The LED lights red in standby mode.
3. Press the Power button (⏻) to turn the projector on or off. (③)
The LED turns green when the projector is turned on.

ADJUST PROJECTED IMAGE HEIGHT



The projector is equipped with an elevator foot for adjusting the projected image height.

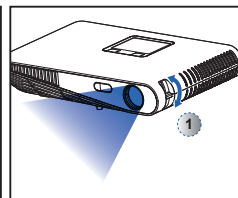
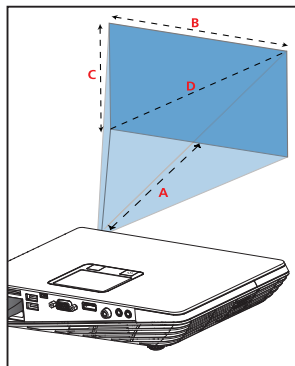
To adjust the height:
Turn the elevator foot to adjust the projected image position to the desired height.

<Note>

After a few seconds, if there is no changes, the projector will automatically adjust the image display via Auto Keystone function.

ADJUST THE PROJECTED IMAGE

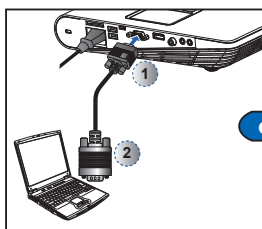
Projection Distance (A)		Screen Size - Width (B)		Screen Size - Height (C)		Screen Diagonal (D)	
Meter	feet	(mm)	(inch)	(mm)	(inch)	(mm)	(inch)
0.50	1.64	360.0	14.2	220.0	8.7	422	16.6
0.90	2.95	640.0	25.2	400.0	15.7	757	29.8
1.50	4.92	1070.0	42.1	670.0	26.4	1262	49.7
1.80	5.91	1290.0	50.8	800.0	31.5	1516	59.7
2.40	7.87	1710.0	67.3	1070.0	42.1	2022	79.6
3.00	9.84	2140.0	84.3	1340.0	52.8	2527	99.5
3.60	11.81	2570.0	101.2	1610.0	63.4	3033	119.4
4.50	14.76	3210.0	126.4	2010.0	79.1	3790	149.2



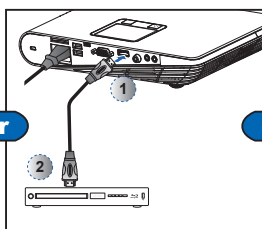
Adjust the focus (①) until the image is clear.

CONNECT INPUT SOURCE - VGA / HDMI

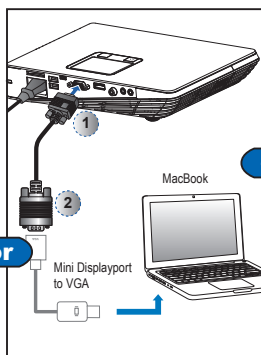
1. Connect a VGA / HDMI device using the appropriate cable. (①~②)
2. After powering on the projector, press direct source button on the remote or swipe left or right on the touch panel.



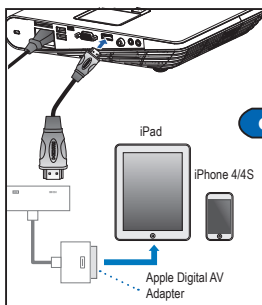
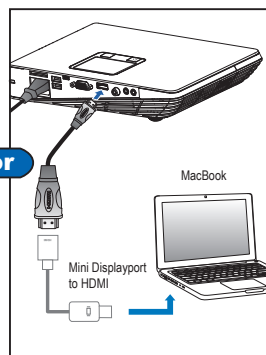
or



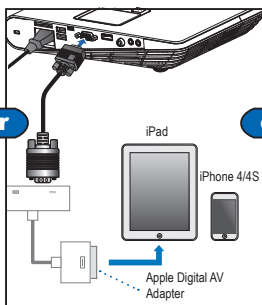
or



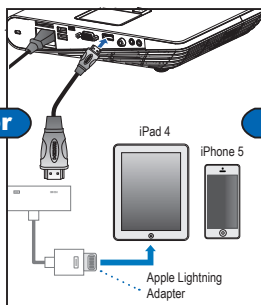
or



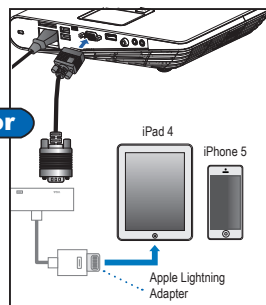
or

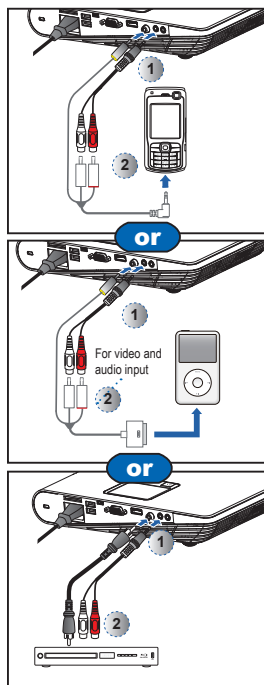


or



or

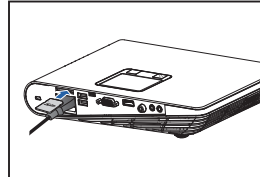




1. Connect the AV input source. (①~②)
2. After powering on the projector, press direct source button on the remote or swipe left or right on the touch panel.

<Note>

1. All other brand and product names are trademarks or registered trademarks of their respective companies.
2. The cables connecting the video output devices are not supplied, please contact the device vendor or Optoma.
3. iPod nano/iPod touch/iPhone/iPod classic (version 5 and above)
4. Designed for iPod/iPhone/Mobile phone/PMP with TV out functions. Using with devices with audio signal voltage > 0.3Vrms is not recommended.

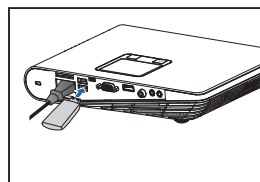


Insert an SD card into the slot with the gold contacts facing down.

<Note>

- To remove the SD card, push the card to eject it from the slot.
- Do not remove the SD card while the projector is projecting image from the card. This can cause data loss or damage the card.
- Supports SD card size up to 32GB.
- The SD card is not included in the package.

INSERT USB FLASH DRIVE

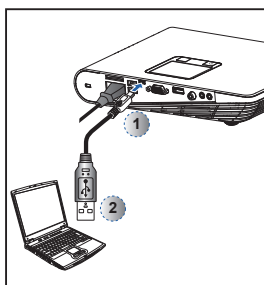


Plug a USB flash drive into the USB Type A port at the back of projector.

<Note>

Support USB flash drive with FAT32 format.

CONNECT COMPUTER FOR USER MANUAL



1. Connect a laptop or PC using the Micro USB to USB Type-A cable.
2. Turn on the projector.
3. CD-ROM icon will appear on the laptop/PC screen.
4. Click CD-ROM icon and open User Manual.

MOUNT THE PROJECTOR



Screw hole for tripod

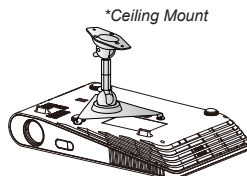
Screw a standard tripod into the screw hole on the projector.



*Standard Tripod



Screw holes (M3x10) for ceiling mount



*Ceiling Mount

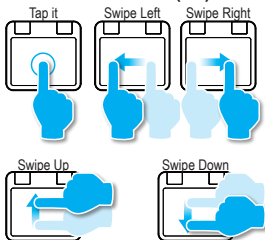
1. Place the projector upside down on a flat surface.
2. Line up the three mounting holes and use the three ceiling mount screws to secure the mount to the projector.

<Note>

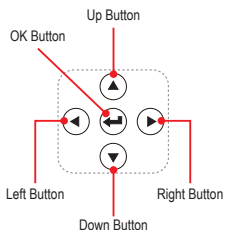
The tripod and ceiling mount are optional accessories.

How to Use the Menu

Touch Panel (TP)



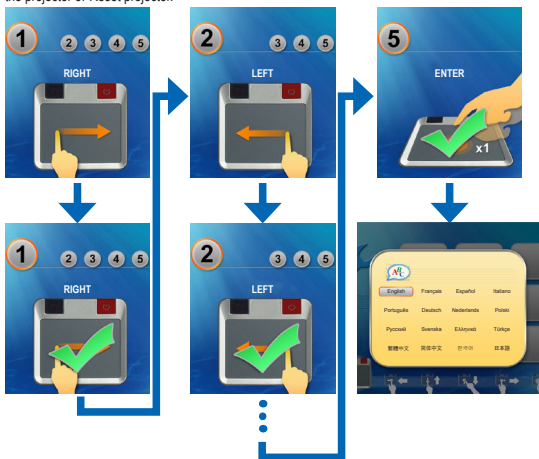
Remote Control (RC)



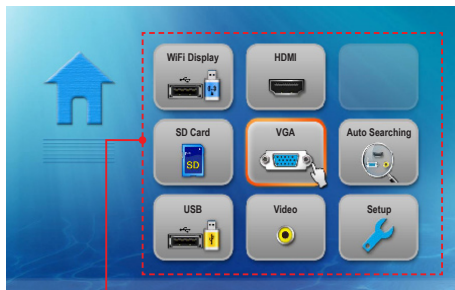
- RC: Use </>/^/▽ to highlight the desired option and press ← to confirm the selection.
- TP: Swipe Left/Right/Up/Down to highlight the desired option and Tap / One Click to confirm the selection.
- Buttons functionality varies depending on the current mode.

Touch Pad Practice Guide

These screens will appear the first time for using the projector or Reset projector.



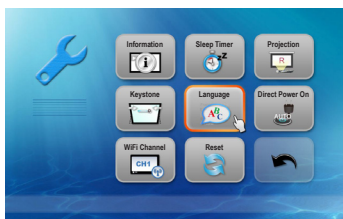
Home menu



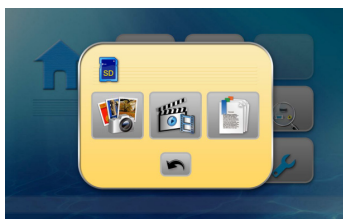
RC: Press ^/▽/</> to select the menu item that you want to access and press ← to enter the menu screen.

TP: Swipe Up/Down/Left/Right to select the menu item that you want to access and Tap / One Click to enter the menu screen.

Submenu Items



Setup menu



SD Card/USB menu



Setup menu
(HDMI, VGA, Video modes)



Video menu

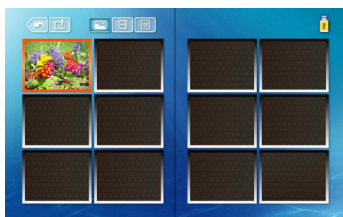
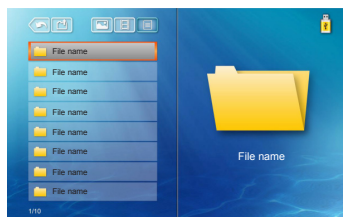


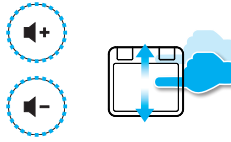
Photo menu



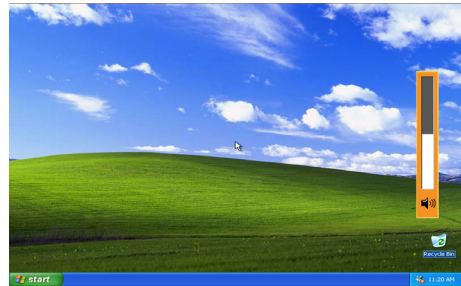
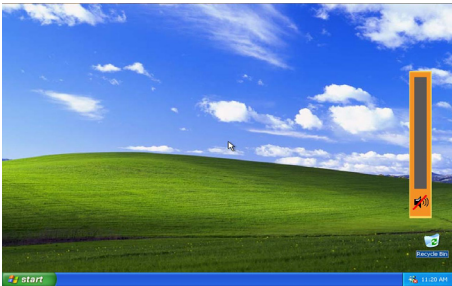
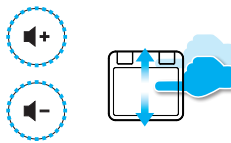
Office Viewer menu

How to Adjust Volume - Source: SD CARD / USB FLASH DRIVE

- Press  /  on the remote control or swipe Up/Down on the touch pad to adjust volume.

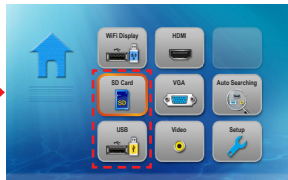


How to Adjust Volume - Source: VGA / VIDEO / HDMI

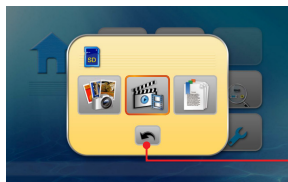
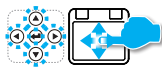


1. Select Data Source

The screen, the source icon on the button guide, and the sequence in which screens appear vary depending on the available data source.



Change data source

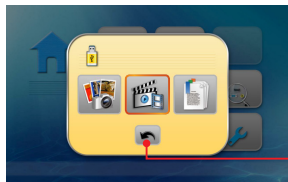
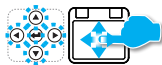


Back icon

Change data source



Change data source

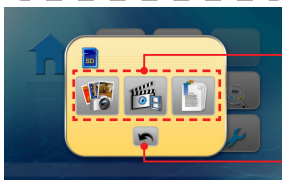


Back icon

2. Select Video Menu

<Note>

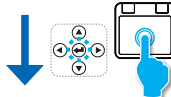
The displayed screen may vary depending on the selected data source on the previous step.



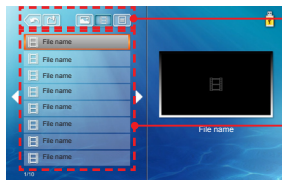
RC: Press </> to select the menu item.
TP: Swipe Left/Right to select the menu item.

Back icon

Show folder list



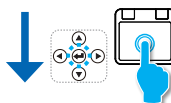
3. Select Video File



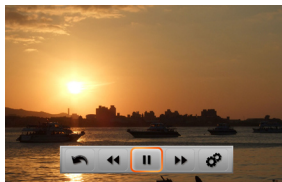
Menu bar

RC: Press ^/▼/</> to select the file list.
TP: Swipe Up/Down/Left/Right to select the file list.

Start playback



4. Playback File



Video Playback mode (see page 8)

Menu Bar Control



Back



Video menu



To parent directory



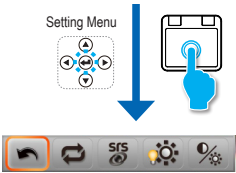
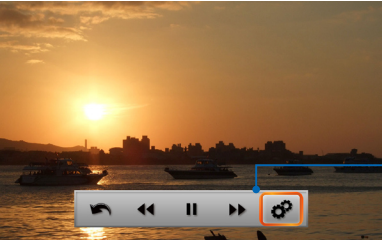
Document menu



Photo menu

How to Play Videos - VIDEO PLAYBACK MODE

<Note>
The button guide disappears when the keypad is not used for 5 seconds.
To display the button guide, press Enter key.



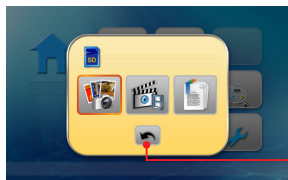
Media Playback Control			
+	Rewind	2x, 4x, 8x, 16x, and 32x	
+	Play	Play	Pause
+	Fast forward	2x, 4x, 8x, 16x, and 32x	
+	Setting	Advanced setting	
+	Repeat	Repeat all	Repeat one Repeat disabled
<div><div>SRS</div><div><div> SRS</div><div>Treble</div><div>Bass</div></div><div><div> Off </div><div>0</div><div>0</div></div></div> <div>Press </> key to switch On / Off SRS. When switch off SRS, press ^/v key to select Treble and Bass. Press < to decrease the value and press > to increase the value.</div>			
+	Display mode	Bright mode PC mode Photo mode Cinema mode	
+	Contrast and Brightness	<div></div> <div>Brightness: Press ^/v key to increase/decrease the brightness. Contrast: Press </> to decrease/increase the contrast.</div>	
+	Back	Back to parent menu	

1. Select Data Source

The screen, the source icon on the button guide, and the sequence in which screens appear vary depending on the available data source.

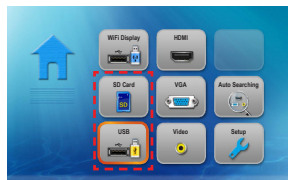


Change data source

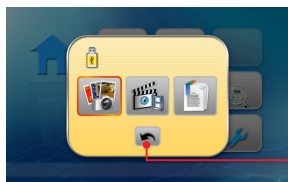


Back icon

Change data source



Change data source

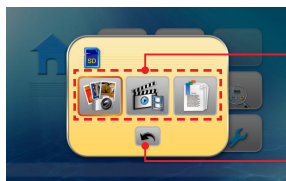


Back icon

2. Select Photo Menu

<Note>

The displayed screen may vary depending on the selected data source on the previous step.

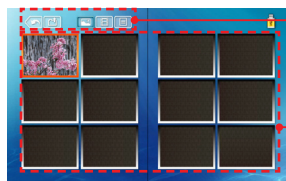


RC: Press </> to select the menu item.
TP: Swipe Left/Right to select the menu item.

Back icon

Show folder List

3. Browse Thumbnails



Menu bar

RC: Press </>/^/▽ to select the file list.
TP: Swipe Left/Right/Up/Down to select the file list.

Start playback

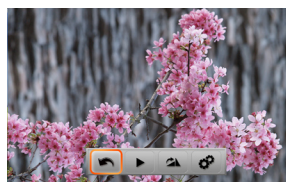


Photo Review mode (see page 10)

4. Preview File

Menu Bar Control



Back



To parent directory



Photo menu



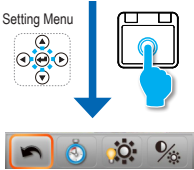
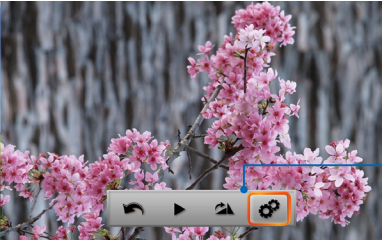
Video menu






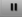
























Document menu

How to View PHOTOS - MODE: PHOTO PREVIEW MODE

<Note>
The button guide disappears when the keypad is not used for 5 seconds.
To display the button guide, press Enter key.



Media Playback Control

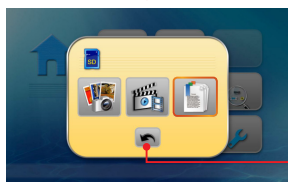
 	Slideshow	 Slideshow on	 Slideshow off
 	Rotate	Clockwise 90 degree	
 	Setting	Advanced setting	
 	Display mode	 Bright mode	 PC mode
		 Photo mode	 Cinema mode
 	Contrast and Brightness	 Brightness: Press  /  key to increase/decrease the brightness. Contrast: Press  /  to decrease/increase the contrast.	
 	Slideshow period	Time period of each photo by slideshow mode	
		 2 sec.	 5 sec.  10 sec.
 	Back	Back to parent menu	

1. Select Data Source

The screen, the source icon on the button guide, and the sequence in which screens appear vary depending on the available data source.



Change data source

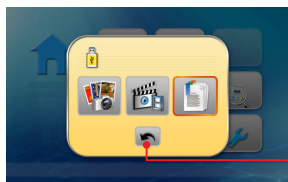


Back icon

Change data source



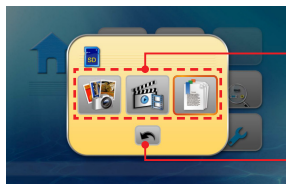
Change data source



Back icon

2. Select Document Menu

<Note>
The displayed screen may vary depending on the selected data source on the previous step.

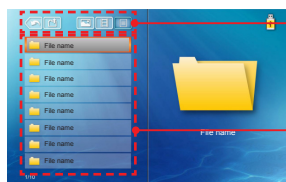


RC: Press </> to select the menu item.
TP: Swipe Left/Right to select the menu item.

Back icon

Show folder List

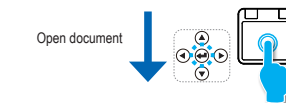
3. Select Document File



Menu bar

RC: Press </>/^/▽ to select the file list.
TP: Swipe Left/Right/Up/Down to select the file list.

Open document



4. View File



View mode (see page 12)

Menu Bar Control



Back



To parent directory



Photo menu



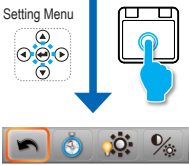
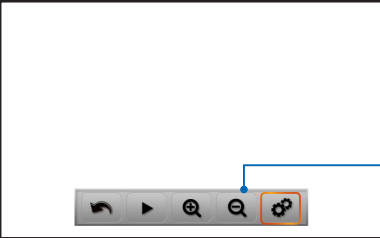
Video menu






















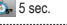
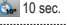

Document menu

How to View Documents - View Mode





<Note>
The button guide disappears when the keypad is not used for 5 seconds.
To display the button guide, press Enter key.



Media Playback Control

 Slideshow	 Slideshow on	 Slideshow off
 Zoom in	Zoom in the page	
 Zoom out	Zoom out the page	
 Setting	Advanced setting	
 Display mode	 Bright mode	 PC mode
	 Photo mode	 Cinema mode
 Contrast and Brightness	 Brightness: Press  /  key to increase/decrease the brightness. Contrast: Press  /  to decrease/increase the contrast.	
 Slideshow period	Time period of each photo by slideshow mode	
	 2 sec.	 5 sec.
	 10 sec.	
 Back	Back to parent menu	

Advanced Menu Control (RC / TP)

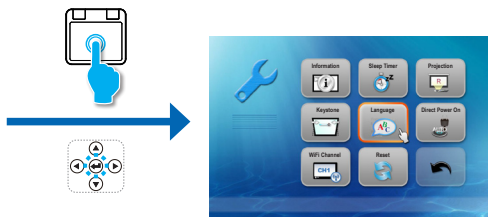
 Page up	 Move to the left
 Page down	 Back
 Move to the right	

HOW TO ADJUST THE SETTINGS

1. Select "Setup" menu



2. Enter "Setup" Menu



Setting Menu Control



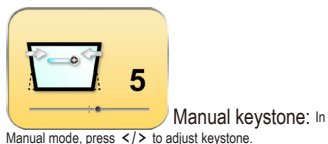
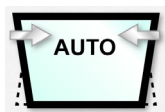
Automatically turn off the projector at a preset time.



Switch to front projection or rear projection.



Press "Enter" to switch Auto keystone / Manual keystone.



Setting system language. Press </>/^/▽ to move highlight bar, then press "Enter" to select language.



The projector will automatically power on when AC power is supplied, without pressing the "⏻" key on the projector control panel or on the remote control.



Setting Menu Control



WiFi Channel

Press "Enter" to Switch Wifi channel (from 1 to 11)



Reset



Press "Enter" to return the display parameters on all menus to the factory default settings.



Back

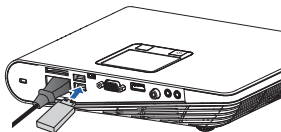
Back to parent menu.

<Note>

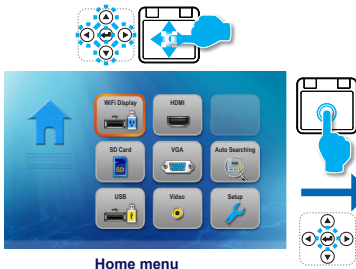
When using WiFi Display function for the first time, install "MirrorOp Lite" software into your PC:

1. From the Windows desktop, double-click "setupMirrorOpSender.exe". Follow the on-screen instructions to complete the software installation.
2. See the WiFi Dongle User Manual for more details.

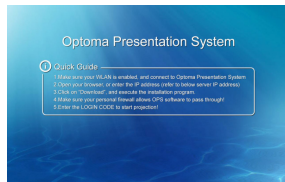
1. Plug in the WiFi Dongle



2. Select "WiFi" menu



3. View WiFi Display Information.



Connect to Laptop/PC according to Quick Guide on screen, and Sync screen with Laptop/PC.

Waiting for connection from PC/Laptop client

4. Display the screen.



RC: Press to open menu list and press < /> to select the menu item.
TP: Tap / One Click to open menu list and swipe Left/Right to select the menu item.

Media Playback Control

SRS



Press </> key to switch On / Off SRS.

When switch off SRS, press / key to select Treble and Bass.

Press < to decrease the value and press > to increase the value.



Display mode



Bright mode



PC mode



Photo mode



Cinema mode



Contrast and Brightness



Brightness: Press / key to increase/decrease the brightness.
Contrast: Press </> to decrease/increase the contrast.

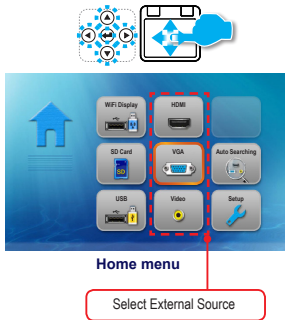


Back

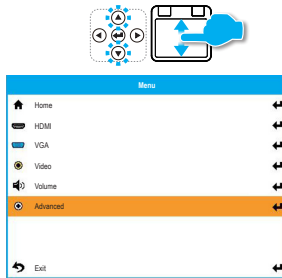
Back to parent menu

<Note> See the WiFi Dongle User Manual for more instructions.

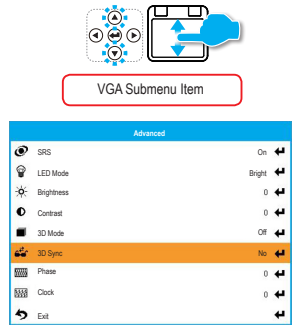
1. Select "VGA" / "HDMI" / "Video" menu



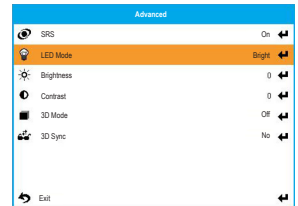
2. Display the submenu



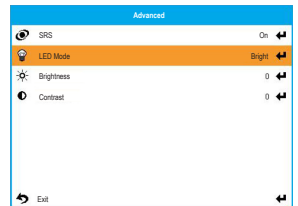
3. Select the item



HDMI Submenu Item



Video Submenu Item



Submenu Control

	Home	Go to Home menu.
	HDMI	Change to HDMI source.
	VGA	Change to VGA source.
	Video	Change to Video source.
	Volume	Press </> to decrease/increase the volume.
	Advanced	The option is different according to the source.

Item Control (Only for Advanced submenu)

SRS



Press </> key to switch On / Off SRS.
When switch off SRS, press ▲/▼ key to select Treble and Bass.
Press < to decrease the value and press > to increase the value.

	LED Mode	Bright mode / Photo mode / PC mode / Cinema mode
	Brightness	Press </> key to increase/decrease the brightness.
	Contrast	Press </> t to decrease/increase the contrast.
	3D Mode	On / Off
	3D Sync	On / Off
	Phase	Press </> key to decrease/increase the value.
	Clock	Press </> key to decrease/increase the value.
	Exit	Exit this menu and back to previous menu.

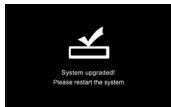
Software updates can be obtained from the Computer.

1. On your computer, create a folder named "upgrade".
2. Download the latest firmware from www.optoma.com and save it in the "upgrade" folder.
3. Copy the "upgrade" folder to the root folder of the SD card.
4. Insert the SD card into the SD card slot of the projector and then press the Power button.
5. Follow the steps below.

1. Wait to Complete



2. Upgrade may take a while to complete



Timing Table

Mode	Resolution	V-Sync (Hz)	Mac
VGA	640 x 480	60 / 72 / 75 / 85 ^(*)	60 / 72 / 85
SVGA	800 x 600	56 / 60 / 72 / 75 / 85 / 120 ^(*)	60 / 72 / 85
XGA	1024 x 768	60 / 70 / 75 / 85 / 120 ^(*)	60 / 70 / 75 / 85
HDTV (720p)	1280 x 720	50 / 60	60
WXGA	1280 x 768	60 / 75 / 85	60 ^(*) / 75 / 85 ^(*)
WXGA	1280 x 800	60	
WXGA	1366 x 768	60	60
SXGA+	1400 x 1050	60	60
WSXGA+	1680 x 1050	60	60
YPbPr, HDMI	480i / 480P	60	
	576i / 576P	50	
	720P	50 / 60	
	1080i	50 / 60	
	1080P	24 / 50 / 60	60 ^(*)

<Note>

(*)1 Not supported input signal for HDMI.

(*)2 Not supported input signal for Computer analog RGB.

(*)3 Support 3D timing.

The projector uses Pictsel File Viewer to open and view Microsoft® office files and Adobe® PDF files.

Supported Versions

Office Version
Microsoft® Office 95
Microsoft® Office 97
Microsoft® Office 2000
Microsoft® Office 2003
Microsoft® Office 2007
Microsoft® Office 2010

Compatible Document Format

Microsoft® Office Application	File Extension
Word	.doc .docx
Power Point	.ppt .pptx
Excel	.xls .xlsx
Adobe PDF	.pdf



MEDIA FILE SUPPORT LIST: VIDEO

Video

File format	Video Format	Audio Format	Decode max res.	Profile	Level
MPG,MPEG	MPEG1	MPEG1 L1-3	1920x1080 30fps 19Mbps		
AVI,MOV,MP4	H.263	MPEG1 L1-3 HE-ACC v1	1920x1080 30fps 19Mbps	P3	70
AVI,MOV,MP4,MKV	H.264	MPEG1 L1-3 HE-ACC v1 AC3	1920x1080 30fps 19Mbps	BP/MP/HP	L4.1
AVI,MOV,MP4,WMV	MPEG4	HE-ACC v1	1920x1080 30fps 19Mbps	SP/ASP	L5
AVI,MOV,MP4	Xvid	MPEG1 L1-3 HE-ACC v1	1920x1080 30fps 19Mbps	HD	
AVI,MOV	MJPEG	MPEG1 L1-3 HE-ACC v1	1920x1080 30fps 19Mbps	Baseline	YUV444
WMV	VC-1	WMA8/9 (v1/v2)	1920x1080 30fps 19Mbps	SP/MP/AP	L3
FLV	Sorenson Spark	MPEG1 L1-3	1920x1080 30fps 19Mbps	Spark	

<Note>

Video format does not support content with B-Frame function

MEDIA FILE SUPPORT LIST: IMAGE

Image

File format	File extension	Max resolution
BMP	*.bmp	3000x3000~9,000,000
JPG, JPEG	*.jpg, *.jpeg	Progressive:2048x2048~4,194,304 Baseline: 3254x2448~7,965,792 support YUV 420, YUV422

If you experience a problem with your projector, please refer to the following information. If a problem persists, please contact your local retailer or service center.

Image Problems

No image appears on-screen

- Ensure the power cord is correctly and securely connected.
- Ensure the pins of connectors are not crooked or broken.
- Make sure the projector is switched on.

Image is out of focus

- Adjust the Focus Dial.
- Make sure the projection screen is between the required distance 19.69 to 177.17 inches (0.5 to 4.5 meters) from the projector. See page 4.

Image is too small or too large

- Move the projector closer to or further from the screen.

Audio Problems

No sound

- During music playback, press  or .

<Note>

When the projector temperature reaches 85°C, the projector automatically shuts down due to the built-in temperature protection. This is not a malfunction. Let the projector cool down before switching it on again.

Clause for Office / Document Viewer

The copyright is owned by Pícsel to avoid rights violated by end customer and third parties.

1. All IPR, including but not limited to copyright, in the Pícsel Products is owned by Pícsel or its supplier.
2. The End User may not:
 - make copies of the Pícsel Products or make them available for use by third parties.
 - reverse engineer, disassemble, reverse translate, or in any way decode the Pícsel Products or any copy or part of it in order to derive any source code. Save only as is permitted by any applicable law.
3. Pícsel makes no representations or warranties whether express or implied (by statute or otherwise) relating to the performance, quality, merchantability, or fitness for a particular purpose of the Pícsel Products or otherwise and all such representations or warranties are specifically disclaimed and excluded.
4. Pícsel agrees and acknowledges that Pícsel and the Pícsel Products will not be specifically mentioned in the end user license agreement.

COPYRIGHT / TRADEMARK

Copyright © Optoma Company Limited.
All rights reserved.

Optoma reserves the right to make technical changes. Optoma assumes no liability for damages incurred directly or indirectly from errors, omissions, or discrepancies between the device and this documentation.

Other brands or logos are trademarks or registered trademarks of their respective companies.

This device is not intended for use in the direct field of view at visual display workplaces.

For service or support please contact your local office.

USA

3178 Laurelview Ct.
Fremont, CA 94538, USA
www.optomausa.com

☎ 888-289-6786
☎ 510-897-8601
✉ services@optoma.com

Canada

2420 Meadowpine Blvd., Suite #105
Mississauga, ON, L5N 6S2, Canada
www.optoma.ca

☎ 888-289-6786
☎ 510-897-8601
✉ services@optoma.com

Latin America

3178 Laurelview Ct.
Fremont, CA 94538, USA
www.optomausa.com

☎ 888-289-6786
☎ 510-897-8601
✉ services@optoma.com

Europe

42 Caxton Way, The Watford Business
Park Watford, Hertfordshire,
WD18 8QZ, UK
www.optoma.eu

☎ +44 (0) 1923 691 800
☎ +44 (0) 1923 691 888
✉ service@tsc-europe.com

Service Tel: +44 (0)1923 691865

Benelux BV

Randstad 22-123
1316 BW Almere
The Netherlands
www.optoma.nl

☎ +31 (0) 36 820 0253
☎ +31 (0) 36 548 9052

France

Bâtiment E
81-83 avenue Edouard Vaillant
92100 Boulogne Billancourt, France

☎ +33 1 41 46 12 20
☎ +33 1 41 46 94 35
✉ savoptoma@optoma.fr

Spain

C/ José Hierro,36 Of. 1C 28522
Rivas Vaciamadrid,
Spain

☎ +34 91 499 06 06
☎ +34 91 670 08 32

Deutschland

Wiesenstrasse 21 W
D40549 Düsseldorf,
Germany

☎ +49 (0) 211 506 6670
☎ +49 (0) 211 506 66799
✉ info@optoma.de

Scandinavia

Lerpeveien 25
3040 Drammen
Norway

☎ +47 32 98 89 90
☎ +47 32 98 89 99
✉ info@optoma.no

P.O.BOX 9515

3038 Drammen
Norway

Korea

WOOMI TECH.CO.,LTD.
4F, Minu Bldg. 33-14, Kangnam-Ku,
Seoul,135-815, KOREA

☎ +82+2+34430004
☎ +82+2+34430005

Japan

東京都足立区綾瀬3-25-18
株式会社オーエスエム
ポートセンター: 0120-46-5040

✉ info@osscreen.com
www.os-worldwide.com

Taiwan

12F., No.215,Sec. 3, Beixin Rd.,
Xindian Dist., New Taipei City 231,
Taiwan, R.O.C.
www.optoma.com.tw

☎ +886-2-8911-8600
☎ +886-2-8911-6550
✉ services@optoma.com.tw
asia.optoma.com

Hong Kong

Unit A, 27/F Dragon Centre
79 Wing Hong Street,
Cheung Sha Wan,
Kowloon, Hong Kong

☎ +852-2396-8968
☎ +852-2370-1222
www.optoma.com.hk

China

5F, No. 1205, Kaixuan Rd.,
Changning District
Shanghai, 200052, China

☎ +86-21-62947376
☎ +86-21-62947375
www.optoma.com.cn