

Multimedia Projector

EB-95 / EB-96W / EB-905 / EB-915W / EB-925 / EB-935W

SPECIFICATIONS		EB-95	EB-96W	EB-905	EB-915W	EB-925	EB-935W
Projection System		RGB Liquid-Crystal Shutter Projection System					
Specification of	LCD	0.55 inch with MLA (D8) / 0.59 inch with MLA (D8) / 0.63 inch with MLA (D7) / 0.59 inch with MLA (D8) / 0.63 inch with MLA (D7) / 0.59 inch with MLA (D8)					
Main Parts		Polysilicon TFT Active Matrix					
	Size	786,432 dots (1,024 x 768) x 3 / 1,024,000 dots (1,280 x 800) x 3 / 786,432 dots (1,024 x 768) x 3 / 1,024,000 dots (1,280 x 800) x 3 / 786,432 dots (1,024 x 768) x 3 / 1,024,000 dots (1,280 x 800) x 3					
	Driving Method	XGA / WXGA / XGA / WXGA / XGA / WXGA					
	Pixel Number	Manual Focus & 1.2 x Optical Zoom / Manual Focus & 1.6 x Optical Zoom					
	Native Resolution	F=1.58 - 1.72 / F=16.9 - 20.28 mm / F=1.51 - 1.99 / F=18.1 - 29.2 mm					
Projection Lens	Type	E-TORL 200W UHE / E-TORL 230W UHE / E-TORL 275W UHE					
Lamp	Type	5000 hours (High Brightness) / 6000 hours (ECO) / 4000 hours (High Brightness) / 6000 hours (ECO) / 3000 hours (Normal) / 4000 hours (ECO)					
	Life	33 to 300 inch / 33 to 318 inch / 30 to 300 inch / 29 to 280 inch / 30 to 300 inch / 29 to 280 inch					
Screen Size	Offset	8:1 / 10:1 / 8.6:1 / 10:0 / 8.6:1 / 10:0					
Light Output*	Brightness Control - High / Low	2600 lm / 2080 lm / 2700 lm / 2160 lm / 3000 lm / 2400 lm / 3200 lm / 2240 lm / 3500 lm / 2450 lm / 3700 lm / 2960 lm					
Color Light Output*		2600 lm / 2700 lm / 3000 lm / 3200 lm / 3500 lm / 3700 lm					
Contrast*		2000:1					
Color Reproduction		Full-Color (16.77 million colors)					
Sound Output		16W Monaural					
Effective Scanning	Pixel Clock	13.5 MHz to 162 MHz, up to UXGA 60Hz					
Frequency Range	Horizontal	15 KHz to 92 KHz					
(Analog)	Vertical	50 Hz to 85 Hz					
Auto Keystone Correction		Vertical: -30 to +30 degrees					
Analog RGB I/O	Display Performance	Native 1024 x 768 dots / 1280 x 800 dots / 1024 x 768 dots / 1280 x 800 dots / 1024 x 768 dots / 1280 x 800 dots					
	Input Terminal	Video D-sub 15-pin x 2 / Audio Stereo mini-jack x 2					
	Output Terminal	Video D-sub 15-pin x 1 / Audio Stereo mini-jack x 1					
Video I/O	Input Signal	Video Standard NTSC / NTSC4.43 / PAL / M-PAL / N-PAL / PAL60 / SECAM					
	Input Terminal	Video Composite Video: RCA (Yellow) x 1, S-Video: Mini DIN x 1 / Audio RCA x 1 (White / Red)					
HDMI	Input Signal	Video Standard 480i / 576i / 480p / 576p / 720p / 1080i / 1080p / Video Signal TMDS (TMDS is signal for HDMI) / Audio Signal Linear PCM					
	Input Terminal	HDMI x 1					
Mic Input	Input Terminal	Audio Stereo mini-jack x 1					
Control I/O	USB I/O	USB Type B x1 (for USB Display, mouse, K/B, control)					
	Serial I/O	RS232C (D-sub 9-pin x 1)					
Memory I/O	USB I/O	Type A x 1 (for USB Memory & ELPDC06)					
Network for	Wired LAN	RJ45 x1 100Mbps					
Projection	Wireless	Terminal USB Type A x 1 / Support Speeds for each mode IEEE 802.11b: 11 Mbps** / IEEE 802.11g: 54 Mbps** / IEEE 802.11n: 130 Mbps**					
Operating Temperature		5°C to 35°C < 41°F to 95°F > (20% - 80% humidity, unfrozen)					
Operating Altitude		0 m to 2286 m < 0 ft to 7500 ft > (over 1,500m / 4,921 ft; with High altitude mode)					
Start-up Period		About 7 seconds (warm-up period: 30 seconds)					
Direct Power On		Yes					
Cool-down Period		Instant off					
Power Supply Voltage		100 - 240V AC +/- 10%, 50 / 60 Hz					
Power Consumption	Lamp On / Standby	100 - 120V	312W / 0.31W	313W / 0.29W	355W / 0.29W	403W / 0.27W	
		220 - 240V	299W / 0.4W	300W / 0.39W	337W / 0.39W	381W / 0.35W	
Dimensions (D x W x H)		263 x 345 x 93 mm					
Weight		Approx. 3.2kg		Approx. 3.3kg		Approx. 3.4kg	
Fan Noise	Brightness Control - High / Low	33 dB / 28 dB / 37 dB / 29 dB / 39 dB / 35 dB					

* Light Output / Color Light Output / Contrast --- Color mode: Dynamic, Zoom: Wide # Windows & Mac
 **Maximum speed and range is achievable when used with same enhanced mode technology. Actual data rates, features and performance may vary depending on your computer system, and environment.

SUPPLIED ACCESSORIES

Power Cable	1.8 m
Remote Control	Yes
Computer Cable	1.8 m
Password Protect Sticker	
User's Manual	
Epson Projector Software (CD-Rom)	

WARRANTY SERVICE

2 Years Onsite Warranty Service to be provided for local purchase only.

EPSON COVERPLUS
Extended Warranty

The warranty service can be extended by purchasing Epson Coverplus Extended Warranty. For more information, please contact Epson customer support.

OPTIONAL ACCESSORIES

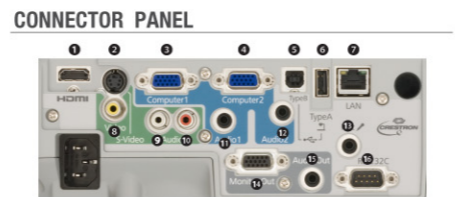
ELPLP60	Spare Lamp (EB-95 / 96W / 905)
ELPLP61	Spare Lamp (EB-915W / 925)
ELPLP64	Spare Lamp (EB-935W)
ELPAF29	Air Filter Set
ELPAP07	Wireless LAN Unit
ELPAP08	Quick Wireless Connection USB Key

Bold, Bright, Beautiful... 3LCD Technology

3LCD technology achieves bright, natural images and smooth, sharp video playback. No color break-up makes images gentle on the eyes.



Optical unit with high light-use efficiency



1 HDMI	9 Audio-L Input Port
2 S-Video	10 Audio-R Input Port
3 Computer 1 Input Port	11 Audio 1 Input Port
4 Computer 2 Input Port	12 Audio 2 Input Port
5 USB (Type B)	13 MIC Input Port
6 USB (Type A)	14 Monitor Out Port
7 LAN Port	15 Audio Out Port
8 Video	16 RS-232C Port

Multimedia Projector

EB-95 EB-96W EB-905 EB-915W EB-925 EB-935W

EPSON

EXCEED YOUR VISION



Make the classroom a fun place to be with more effective lessons

EPSON
EXCEED YOUR VISION

Epson Hong Kong Limited
Unit 715-723, 7/F Trade Square,
681 Cheung Sha Wan Road,
Cheung Sha Wan, Kowloon, Hong Kong

Hong Kong Region:
Epson Authorized Customer Service Centre (Repair Service)
 Room 1006, 10/F, Block B, Sea View Estate,
 4-6 Watson Road, North Point, Hong Kong

Kowloon Region:
Epson Authorized Customer Service Centre (Collection Point)
 Room 1006-8, 10/F, Park-In Commercial Centre,
 56 Dundas Street, Mong Kok, Kowloon, Hong Kong

Sales hotline : (852) 2827 8711
 Technical hotline : (852) 2827 8911

URL: www.epson.com.hk

DEC12-02-PROJECTOR

Please call our sales hotline for demonstration at our showroom

1 Easy and flexible usability

Horizontal Keystone



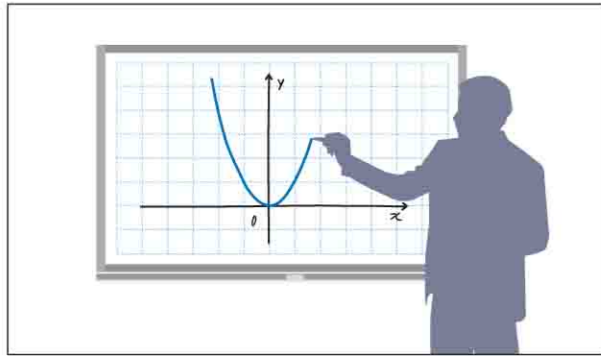
These projectors provide vertical (automatic/manual) and horizontal (manual) keystone correction. Thanks to these functions, it is not necessary to put the projector in the center of the desk. You can place the projector anywhere you want.

Bigger Control Panel



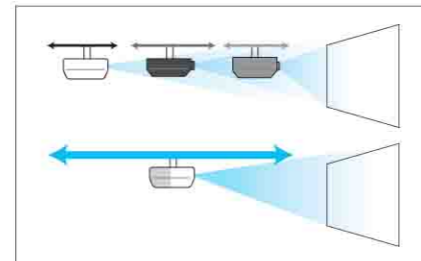
The larger control panel & clear lettering allow for easier projector operation. This new Epson control panel was designed for educational products.

Template Function



When projecting to a whiteboard, blackboard, etc, this function projects lines to make writing on the board easier. Various types of line patterns can be selected.

1.6x Zoom Lens (EB-905/915W/925/935W)

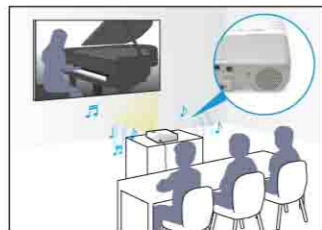


The wider range of set up provides a high likelihood of corresponding with the position of the previously used projector.

2 Enhanced audio

16W Built-in Speaker

The powerful 16W built-in speaker replaces the need for an external speaker. The high quality output can be heard clearly even in a large room.



Microphone Input

The inclusion of a microphone input terminal makes it possible to use a microphone in conjunction with the 16W speaker.

3 Advanced operation with wider connectivity

Wide-ranging Connectivity

Its wide-ranging compatibility with devices like HDMI, LAN cables, microphones, and, of course, PCs, makes it well suited to any classroom setting. Easy integration and advanced connectivity features allow you to evolve your classroom as you incorporate additional technology.



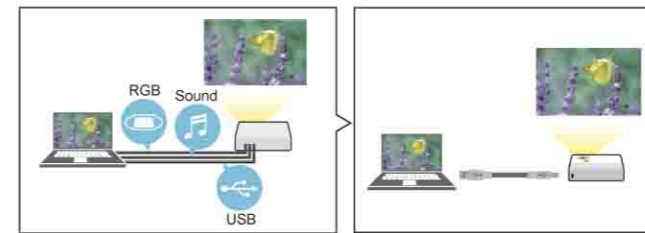
Direct Connection with ELPDC06



These projectors can be connected directly to ELPDC06 (Epson Document Camera) via USB cable. ELPDC06 helps facilitate effective presentations and lessons.

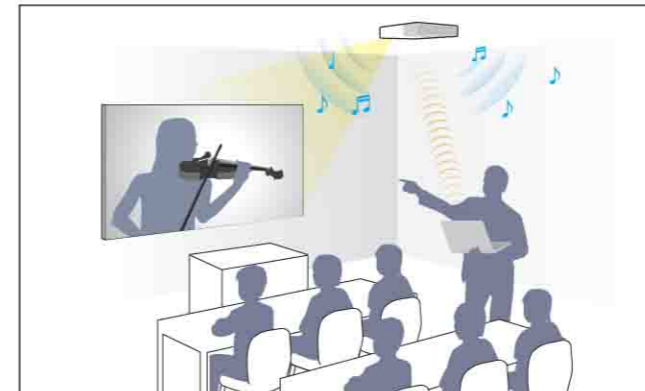
3 Advanced operation with wider connectivity

USB Display 3 in 1



Projection set-up is no longer a troublesome process. Images can be projected by simply connecting the PC and projector via USB cable. Sound data can also be sent. A built-in speaker allows you to enjoy powerful sound without having to prepare a separate speaker.

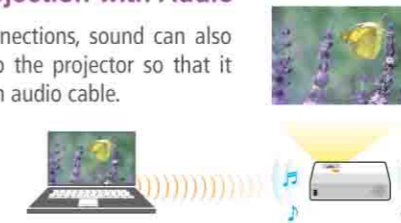
Wireless Connection



Free from complicated and dangerous cables! A wireless LAN connection is possible via an access point. You can also make a direct connection between the projector and a PC.

Wireless / Wired Projection with Audio

In the case of wireless connections, sound can also be transmitted wirelessly to the projector so that it isn't necessary to connect an audio cable.

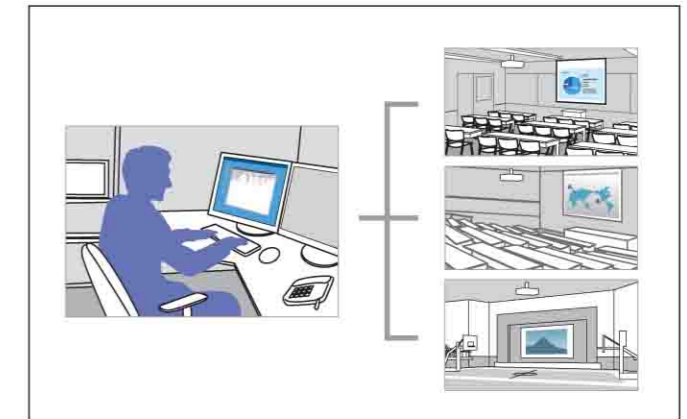


Multi Screen Display



You can share more information with large audiences using the Multi Screen Display function.

Monitoring & Control Function



With Epson Network monitoring and control software (Easy MP monitor), a single PC allows you to see which projectors are available and if they are running efficiently, even across the largest of networks. This series can be configured remotely, and you can receive instant email alerts for pre-defined critical indicators such as non-functioning devices or overheating lamps. You can also access a projector's serial number remotely via LAN/serial connection.

4 Low TCO

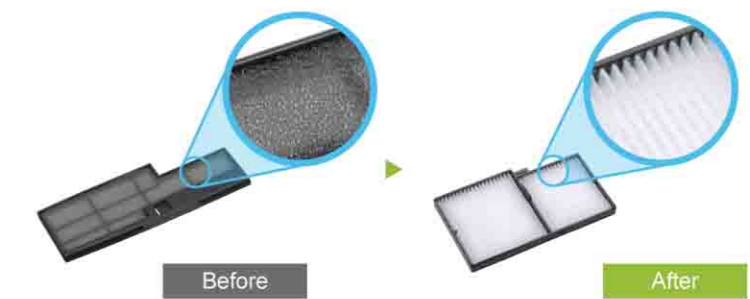
6000H - Long Lamp Life & EasyLamp Replacement



Longer lamp life enables customers to extend maintenance cycles to up to 6000H.

(*except EB-935W)

High Efficiency Filter



The new electrostatic filter enables customers to extend maintenance cycles to up to 5000H, leading to dramatic savings in time and maintenance costs. The surface area of the filter is more than double that of current models.