

## PROJECTOR P R O 8 2 0 0

DISPLAY	Type	TI DMD 0.65" 2xLVDS 1080p Type-A DMD
	Resolution	Full HD 1080 1920x1080 (Native) / UXGA 1600x1200 (compressed)
	Zoom Factor Lens	1.5x Manual Zoom/Manual focus
	Size	30"-300"
	Throw Distance	0.9 ~ 10.0 meter (3 ~ 32.8 feet)
	Throw Ratio	1.4 ~2.14 (100" @ TD=3.1m - 4.65m)
	Lamp	230 watt
	Lamp Life (Normal / Eco-mode)	4000 / 6000 (hours)
	Brightness	2000 Lumens
	Contrast Ratio	4000:1
	Color Depth	30 bits, 1.073 billion colors (10+10+10)
	Color Wheel	7-Seg RGBCYW / 7200rpm, 480i, 570p
	Color Gamut	70% NTSC 1931 CIE
	Keystone	Vertical digital keystone correction: ± 40 degrees
AUDIO	Speaker	10W x2
INPUT SIGNAL	Computer and Video	NTSC M (3.58 MHz), 4.43MHzPAL (B, D, G, H, I, M, N, 60) SECAM (B, D, G, K, K1, L)480i, 576i, 480p, 576p, 720p,1080i
	Video	NTSC, PAL
	HD hight quality	HD (720p, 1080i, 1080p)
COMPATIBILITY	Frequency	Fh: 31-91 KHz, Fv: 48-85 Hz
	PC	VGA to Full HD1080
CONNECTOR	Mac	SXGA+ 1400x1050
	RGB Input/ Output	Input: 2x15-pin D-sub, Output: 1x15-pin D-sub
POWER	Composite Input	1 x RCA jack
	S-video Input	1 x 4-pin mini DIN
	Audio Input	1 x 3.5mm mini-mono jack / 1 x RCA jack
	Microphone Input	1 x 3.5mm mini-mono jack
	Audio Output	1 x 3.5mm mini-mono jack
	Control	1 x RS-232 (9 pin D-sub)
	Digital Input	2 x HDMI 1.3
	USB	USB type A for Firmware Upgrade
	DC Output	12V
	NOISE LEVEL	Voltage
Consumption		310W (Typical) / <1W (RGB out disable)
LANGUAGE	Normal / Eco-mode	31dB / 27dB
Controls	Basic	English/ Frence / Germany/ Italian/ Spanish/ Russian/ T. Chinese/ S. Chinese/ Japanese/ Korean/ Swedish/ Dutch/ Turkish/ Czech/ Portuguese/ Thai/ Polish/ Finnish
		Power / Freeze/ Blank / Auto / Menu / 4 directon buttons /VGA1 &2 / Video / Source / Enter/ Exit / Keystone+/- / Magnify +/- / Volume +/- / Mute / Color Mode
CONDITIONS	Humidity	0°C-40°C (32°F-104°F)
	Altitude	10%-90% (non-condensing)
DIMENSIONS	Physical (W x H x D)	333mm x 263mm x 110mm
WEIGHT	Net	3.86 kg
REGULATIONS		CB, RoHS, SVHC, PSB, C-tick, KC, CE, GOST-R, Hygienic, UKrSEPRO
WARRANTY		3 years
LAMP WARRANTY		1 years



# 1080P Full HD

## Top Theater Projector



# PRO 8200

Evolves perfectly the new principle



# PRO 8200 The 300-inch Sensation

The ViewSonic Pro 8200 is a high-end projector designed exclusively for home theaters to satisfy discerning people who demand the best image quality available from cutting-edge projecting technologies. The Pro 8200 features the stunning 1920x1080 resolution that is more than enough to present smooth, fluid Full HD 720p or 1080i videos without annoying artifacts.

The affordable price, a full slew of interfaces, vivid colors and extremely high brightness meet the need for any settings and environments for your media pleasure with living room comfort. Better yet, it has the picture-in-picture capability like premium televisions, which enables you to take full advantage of its multiple video inputs. Like other fine ViewSonic projectors, the Pro 8200's short-throw lens takes only a few meters to take your favorite movie to the mind-blowing 300-inch extreme.

Think big, think ViewSonic. There's no other way to enjoy such a sensational viewing experience in such an easy, witty choice.



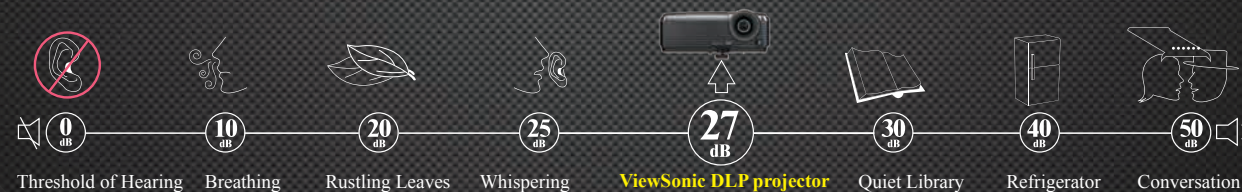
1080p Full HD

## Two 10W speakers

you may have studio-class speakers in your meticulously built home theater, but sometimes you just don't have them nearby. The two built-in, high-quality 10W speakers of the ViewSonic Pro 8200 projector save you time and effort transporting and preparing external speakers when you're on the run.

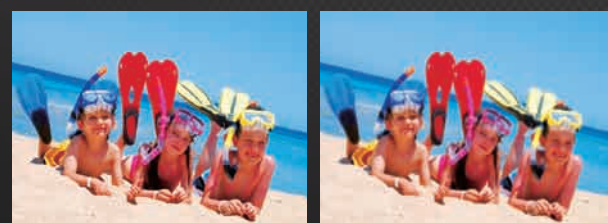
## Extremely low noise

the operating sound produced by ViewSonic Pro 8200 in the special "whisper mode" can be as low as the humming 27db, which helps your audience to concentrate on the screen instead of being distracted unnecessarily. In addition, the Eco mode effectively extends lamp life and saves power to contribute your share to the environment.



## High resolution

the 1920x1080 resolution performs perfectly for Full HD 720p or 1080i video, while the sharp 4000:1 contrast ratio and 2,000-lumen brightness gives the best quality no matter you're watching movies, sports programs, educational materials or making business presentations, thanks to the latest Texas Instruments DarkChip3™ DLP Technology.

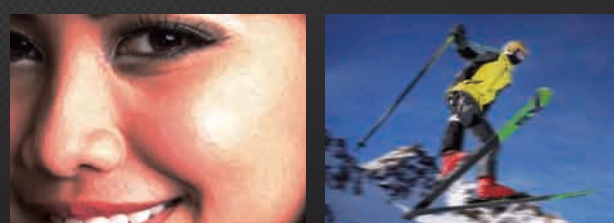


1080p

720p

## 7-segment color wheel

The exclusive 7-segment color wheel is unmatched in terms of gamut extensiveness, saturation and color depth. The ViewSonic Pro 8200 projector is currently the only model of its kind on the global market taking advantage of the new 7-segments color wheel from Texas Instruments to address the "rainbow" and "motion contouring" effects usually found on conventional projectors.



Promotion skin color level change

Falls the feeble shade effect

## New DarkChip 3

the new chipset, also from Texas Instruments, offers enhanced colors, smoother motion and sharp contrast 20% to 40% better over the previous DarkChip 2. In addition, the black levels are also more solid, showing no trace of grey-out or color undertones; white parts are also richer and denser comparing to which from older projectors.

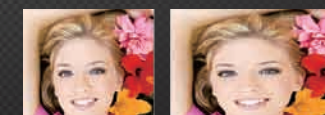


The DarkChip 3 would show much darker black levels thus giving the overall image quality particularly for a home theatre system and much better overall image quality.

DarkChip 2

## 4:3 Image Ratio Adjustments

The distorted images are thus unnatural to watch and even irritating. To address this, the ViewSonic Image Ratio Adjustment technology perfectly switches between wide screen and 4:3 formats to deliver the images as they should be for your eyes to enjoy.



correct 4:3 ratio

incorrect Full screen

## Instant on/off

the exclusive "Off-to-Go" feature of Pro 8200 allows instant shut-down after use without waiting for cool off; this effectively saves power and time for busy professionals, and prevents accidental damage to the lamp as well. In addition, the power-on procedure takes only 3 seconds, providing more agility and flexibility to the presenters.

## Full connectivity

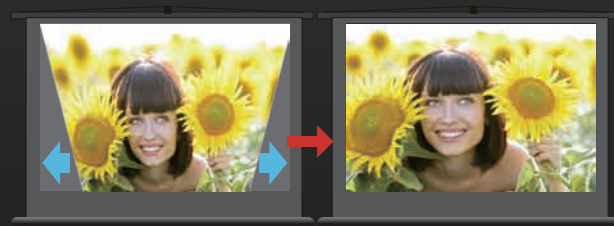


the Pro 8200 features a full range of interfaces, including two RGB input, a RGB output, a S-video, a Composite Video, two HDMI and a RS-232 interfaces. The connectivity enables the projector to become the media hub of your home theater that integrates many different video and audio sources to give you the best flexibility and media experience.



## Auto Keystone

the ViewSonic Pro 8200 is capable of ±40 degrees of vertical keystone adjustment, allowing the projector to be arranged in places that are not aligned perpendicularly to the screen to a certain degree. This feature not only offers better placing flexibility, but also gives the image a perfect rectangular shape from any viewing angle.

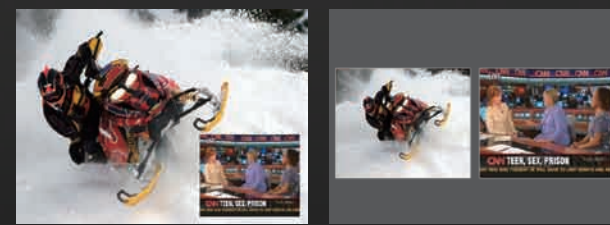


Generally

Vertical digital keystone correction

## PIP and POP

the PIP (picture-in-picture) and POP (picture-over-picture) features allow you to view images from more than one video sources simultaneously. Just freely choose the main image you'd like to watch, and then the secondary image to be displayed in a smaller frame embedded in, or placed over, the main screen for you to see the best of both worlds.



PIP (picture-in-picture)

POP (picture-over-picture)

## 1.5x zoom factor

Increase 40%

the 1.5x zoom lens gives the ViewSonic Pro 8200 high projecting accuracy and the choice to produce an enormous 300-inch screen, to accommodate a shorter throwing distance limited by the room, or to offer the liberty to turn the Pro 8200 into a ceiling-mount system for the maximum space efficiency.

