

you can  
**Canon**

MULTIMEDIA PROJECTOR

**LV-7230**

The big-money projector  
with the small price-tag.



OFFICIAL SUPPLIER



**ProSelecta**

View :: Compare :: Select - [www.ProSelecta.com](http://www.ProSelecta.com)

# High performance just became more affordable.

You may have thought that it's not possible for a projector to combine high performance with that other vital feature – affordability. If so, here's the LV-7230, proving that you can indeed have both. With superb quality image projection, ease of use and portability, it's the ideal machine for organisations looking for quality while also keeping an eye on costs.

## EXCEPTIONAL IMAGES FOR OUTSTANDING PROJECTION

The LV-7230 delivers ultra-clear, sharp images by means of a high-efficiency 200W lamp yielding 2000 lumens brightness, a superb Canon 1.6x wide-angle zoom projection lens and native XGA resolution (1024 x 768 pixels). Even in a well-lit room, images are highly visible.

Progressive scan technology reduces screen flicker, a vital benefit for home-cinema use and also when projecting multimedia presentations.

## SUPERIOR EASE OF USE, AND PORTABILITY TOO

The LV-7230 has a range of features that make it extremely easy to use.

Vertical Keystone Correction allows accurate image projection even when the projector isn't positioned square to



1. Interlaced Scanning



2. Flicker-free Progressive Scanning

the screen. Keeping picture edges straight and parallel, it makes set-up easier because you've less worries about exact alignment.

Automatic Multi-Scan System (AMSS) means that when you connect to a PC, the signal type is recognised immediately. Resolution, screen tracking and position are all adjusted accordingly, doing away with the need for complex manual adjustments.

The projector's easy-to-follow on-screen menu system supports a total of 12 different languages. Its control panel is well laid-out, and an ergonomically designed remote control handset lets you operate things from a distance.



Lightweight and compact, the LV-7230 is very portable, allowing you to pick it up and carry it with you to wherever it's needed. Its

wide-angle lens allows large images to be projected from short throwing distances – perfect for small rooms and greatly increasing your options when it comes to where you place the projector. For example, to achieve an image with a diagonal of 100" (203 x 152cm), a throwing distance of just 2.5 metres is required – equivalent to only 100 inches between the projector and the screen surface.\*

\* See throwing distance diagram on the back page for further details.





RGB Output from a desktop PC being displayed on both the projection screen and an external monitor.



### ADAPTING TO EVERY SITUATION

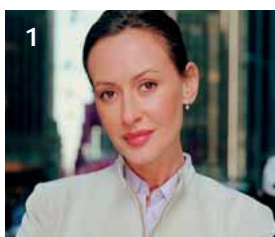
RGB Output lets you connect an external monitor to the LV-7230. This means you can face your audience while presenting, rather than constantly turning to see the projected images on the screen.

When you find yourself without a white screen to project onto, Blackboard Mode becomes invaluable. Simply enable this mode and the LV-7230 corrects the colours, ensuring that white areas and text are clearly projected.

Three Lamp Modes let you trade image brightness for noise level. Normal Mode gives maximum brightness. Quiet Mode dims the image slightly,

but considerably reduces fan noise and power consumption. Auto Mode is a balance of the two – adjusting lamp output to suit the image displayed. Lamp Mode is also useful for reducing running costs – for example, continuous use of Quiet Mode will increase the service life of the lamp by up to 1000 hours.

Also extending lamp life and reducing power consumption is the LV-7230's Power Management System, while for peace of mind there's a power-on-password function. This protects your investment by preventing any unauthorised use and by discouraging theft.



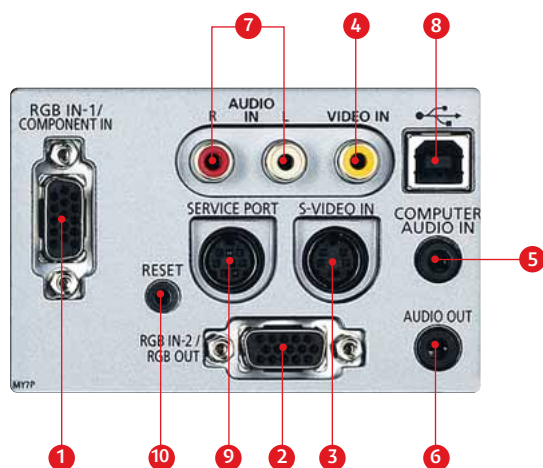
1. Original image



2. Blackboard Mode Off



3. Blackboard Mode On



Connectivity has never been easier. All input ports are positioned together at the rear of the unit, enabling quick and tidy connections to your source equipment. You won't need any special technical know-how to get your presentation up and running – simply 'connect and project'.

#### IMAGE INPUT/OUTPUT

- 1 Mini D-sub 15-pin RGB Input 1/Component Video Input
- 2 Mini D-sub 15-pin RGB Input 2/RGB Output
- 3 Mini-DIN 4-pin S-Video Input
- 4 RCA Composite Video Input

#### AUDIO INPUT/OUTPUT

- 5 3.5mm mini-jack Audio Input

#### 6 3.5mm mini-jack

Audio Output

- 7 RCA x2 Audio Input (L/R)

#### CONTROL PORTS

- 8 USB Type B Mouse Control
- 9 Mini-Din 8-pin Service Port, for projector servicing and control

#### OTHER

- 10 Reset Button





# A range of accessories for even more performance.

The LV-7230 has a complete range of in-box and optional accessories available, delivering even more from your most valuable presentation tool.

- IN-BOX ACCESSORIES
- Remote Controller  
Soft Carrying Case  
AC Power Cable  
VGA Computer Connection Cable  
USB Cable  
Lens Cover

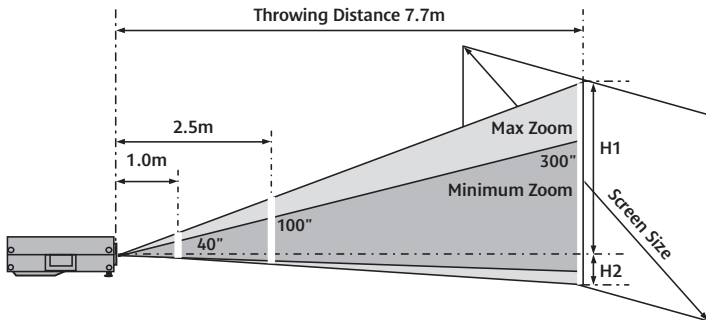
## OPTIONAL ACCESSORIES



## Specifications LV-7230

<b>LCD PANEL</b> Type Size and Number Aspect Ratio Native Resolution Number of Pixels	Transmissive LCD, Poly-silicon TFT active matrix 0.79" with microlens, 3 panels 4:3 1024 x 768 (XGA) 786432	<b>IMAGE AND AUDIO (CONT.)</b> Image Enhancement Built-in Speaker	10-bit Digital Gamma Correction 1.0W RMS, monaural, 28mm
<b>OPTICS</b> Light Source Projection Lens Configuration Lens F Number and Focal Length Zoom Magnification Zoom and Focus Control Lens Shift	200W SHP lamp 11 groups, 11 elements F1.73 – F2.5; f=20.3 – 32.5 mm 1.6x Manual zoom, Manual focus 9:1 (fixed)	<b>CONNECTORS</b> RGB Input 1 RGB Input 2/RGB Output Component Video Input S-Video Input Composite Video Input Audio Input Audio Output Mouse Control Service Port	Mini D-Sub 15-pin (SCART input with optional cable) Mini D-Sub 15-pin Via 3 x RCA adapter cable (available separately) Mini DIN 4-pin RCA x 1 3.5mm <sup>2</sup> stereo mini-jack x 1, RCA x 2 (L/R) 3.5mm <sup>2</sup> stereo mini-jack x 1 USB Type B Mini-DIN 8-pin
<b>IMAGE AND AUDIO</b> Brightness (Normal Mode) Uniformity Contrast Ratio Projection Distance Coverage Screen Size Digital Zoom Magnification Keystone Correction Range Analogue RGB Compatibility Video Colour Systems HDTV/Component Scan Systems Progressive Scan Horizontal Resolution (Video) Scanning Frequency Display Modes	2000 lumens 85% 380:1 (full on: full off) 1.0m – 7.7m (2.5m – 4.0m for a 100" image) 40" – 300" 0.5x – 16x Vertical: +/- 20° SXGA (compressed)/XGA/SVGA/VGA PAL/NTSC/SECAM/PAL-M/PAL-N/NTSC4.43 1080i/1035i/720p/575p/575i/480p/480i Up-conversion of 480i and 575i formats 550 TV lines Horizontal sync: 15 – 100kHz Vertical sync: 50 – 100Hz Dot clock: 130MHz Standard, High Contrast, Cinema, Blackboard, Custom	<b>MECHANISMS</b> Front Elevation Mechanism	Mechanical foot, 11.9° maximum image elevation
		<b>RATINGS</b> Dimensions (W x H x D) Weight Power Source Power Consumption Noise Level Ambient Temperature Range Storage Temperature Range Warranty	300mm x 93.8mm x 238.8mm 2.9kg AC 100 – 120V, 200 – 240V, 50/60Hz Normal Mode: 275W/Quiet Mode: 212W/Standby: 7W Normal Mode: 39dBA, Quiet Mode: 34dBA 5°C – 35°C -10°C – 60°C 3 years (90 days for lamp)
Some images are simulated for clarity of reproduction. All data is based on Canon's standard testing methods. Specifications are subject to change without notice. ™ and ®: All company and/or product names are trademarks and/or registered trademarks of their respective manufacturers in their markets and/or countries.			

TRUE THROWING DISTANCE				
Screen Size				
inches	40"	100"	150"	300"
cm	81 x 61	203 x 152	305 x 229	610 x 457
Projection Distance				
Zoom max	1.0m	2.5m	3.8m	7.7m
Zoom min	1.6m	4.0m	6.0m	-
H1	55cm	137cm	206cm	411cm
H2	6cm	15cm	23cm	46cm



you can  
Canon

Canon Inc  
www.canon.com  
  
Canon Europa NV  
www.canon-europe.com

© Canon Europa NV 2005

